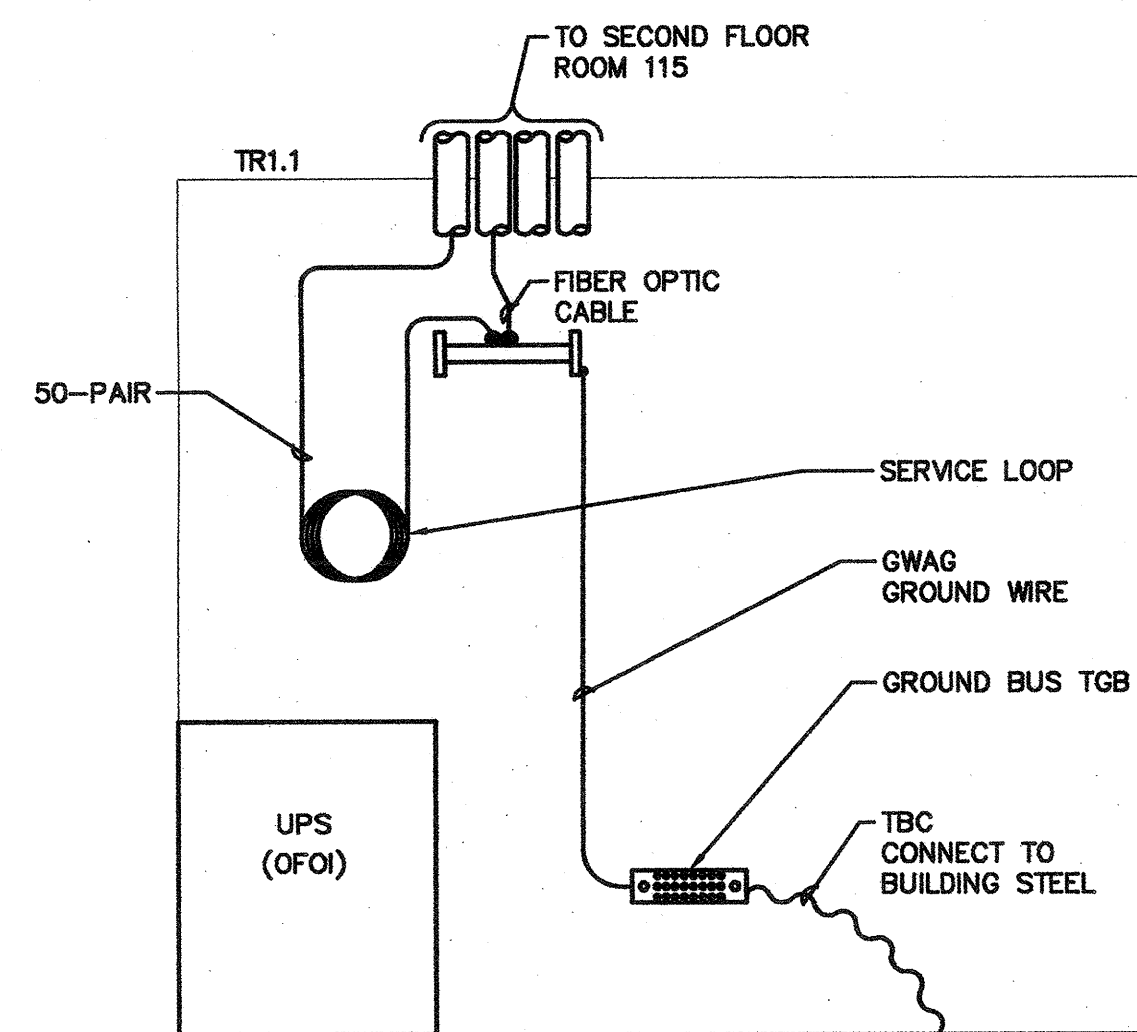


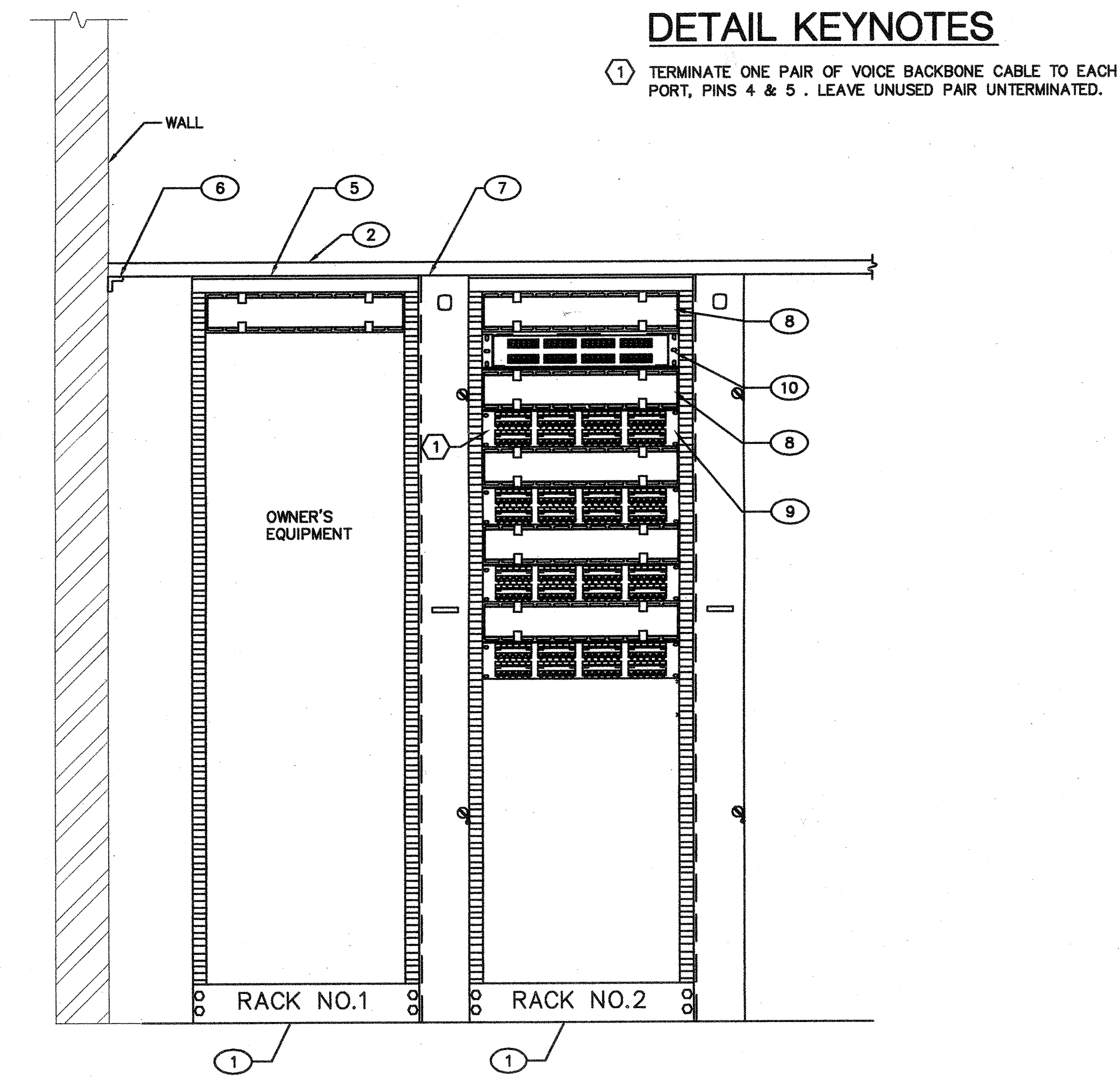
1 SIGNAL - ENLARGED FLOOR PLAN RM. F103

SCALE: 1/2"=1'-0"



2 SIGNAL - WALL ELEVATION RM. F103

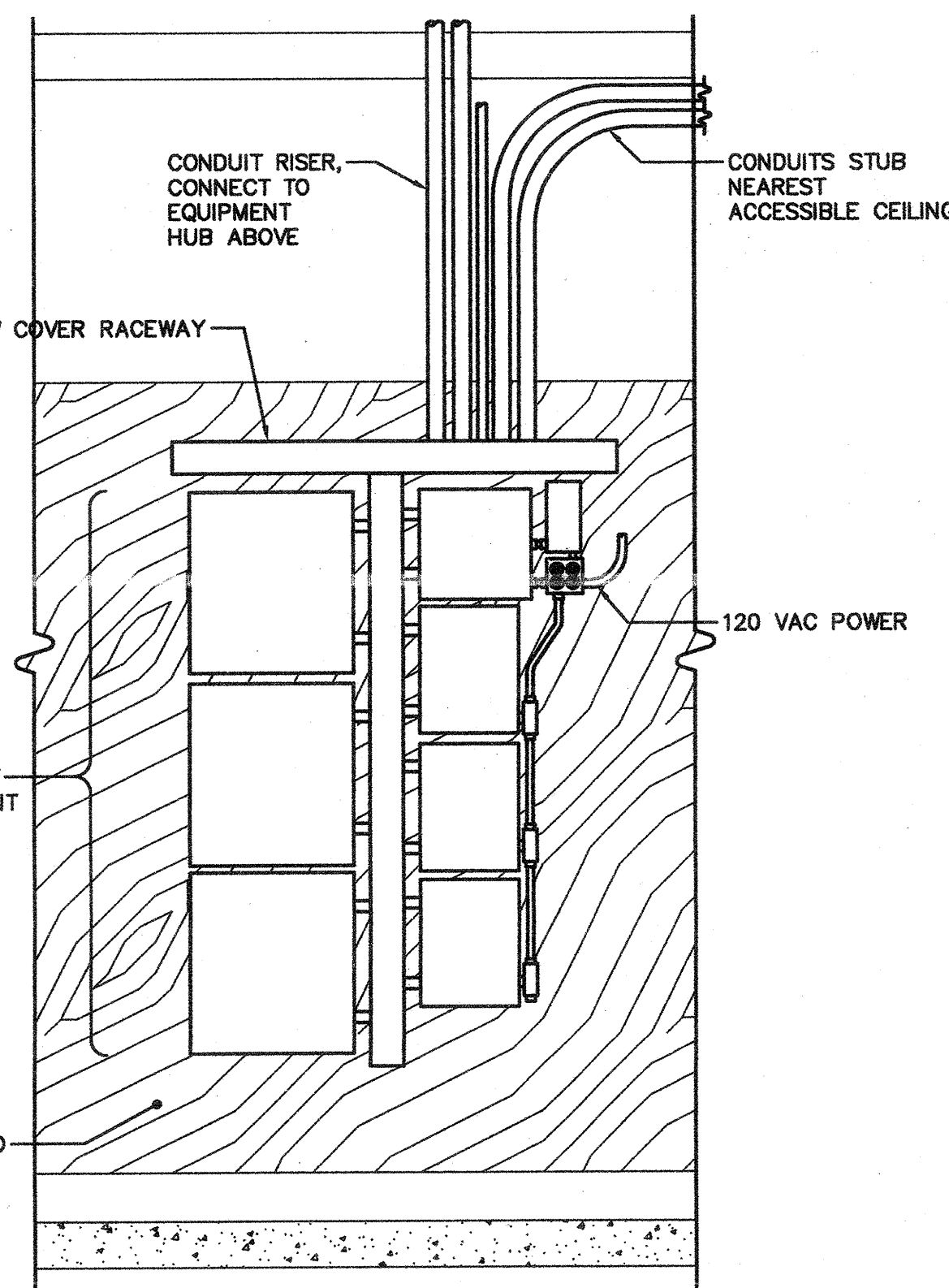
NO SCALE



3 SIGNAL - RACK ELEVATION RM. F103

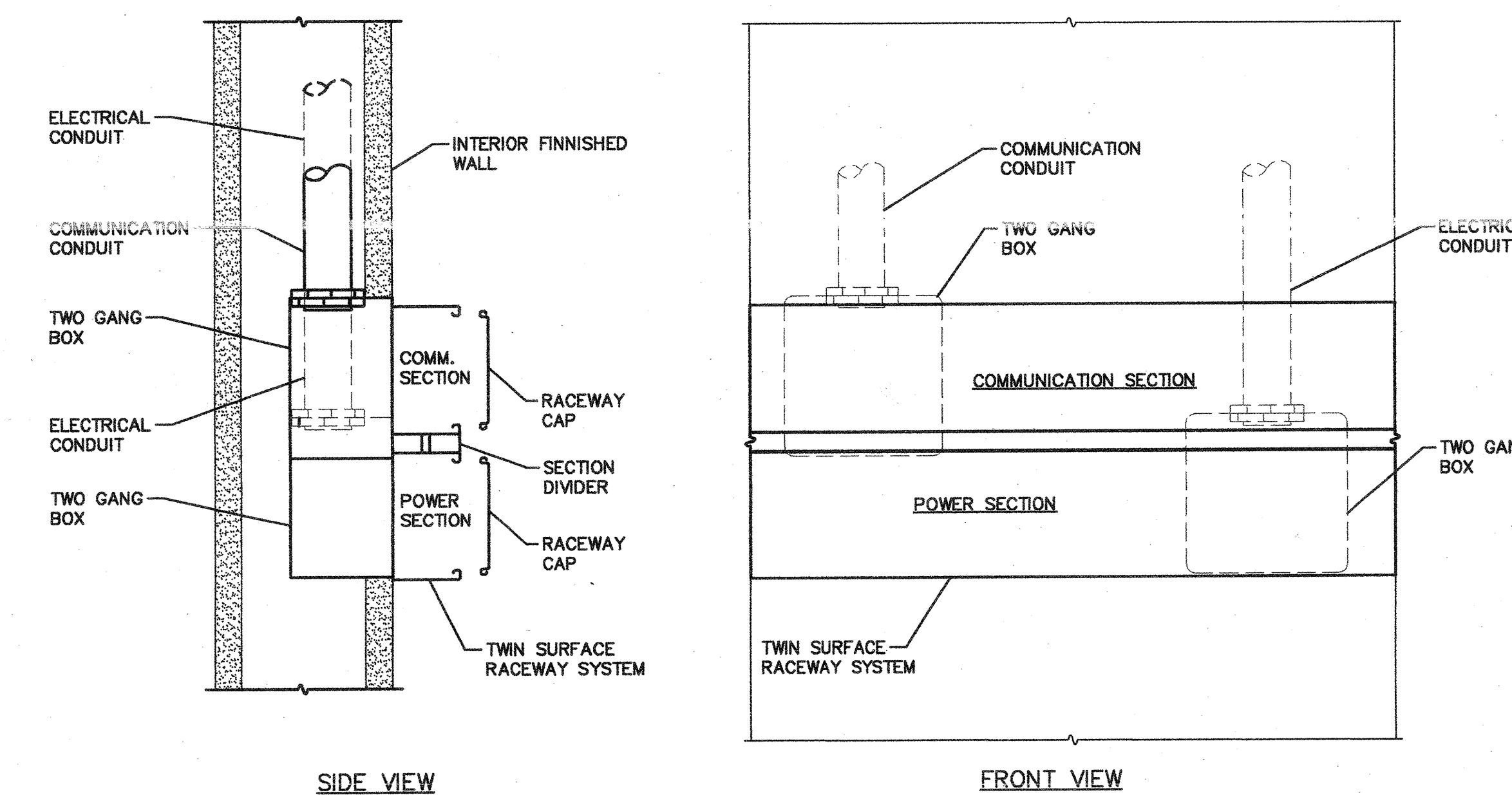
NO SCALE

Equipment ID	Quantity	Manufacturer	Part Number	Description
1	As Required	Chateworth	55053-703	19" x 84" Free standing Relay Rack, UL Listed, Black
2	As Required	Chateworth	11275-712	12" cable Tray, UL Listed, Black
3	As Required	Chateworth	18301-701	Butt-Splice Kit, UL Listed, Black
4	As Required	Chateworth	18302-701	Junction-Splice Kit, UL Listed, Black
5	As Required	Chateworth	10595-712	3" Channel Rack to Runway Mounting Plate, Black
6	As Required	Chateworth	11421-712	Wall Angle Support Kit, Cable Runway, Black
7	As Required	Chateworth	30162-715	Vertical Cable Management, Double Sided, Black
8	As Required	Chateworth	30523-719	Horizontal Cable Management, Double Sided, Black
9	As Required	Panduit	24465R	48-Port Modular Faceplate Patch Panels, 2 Rack Spaces
10	As Required	Uniprize	RFE-FX8-EM/14	Fiber Termination Unit, Rack Mount, Holds 12 Adapter Panels



5 SECURITY PANEL WALL ELEVATION

NO SCALE

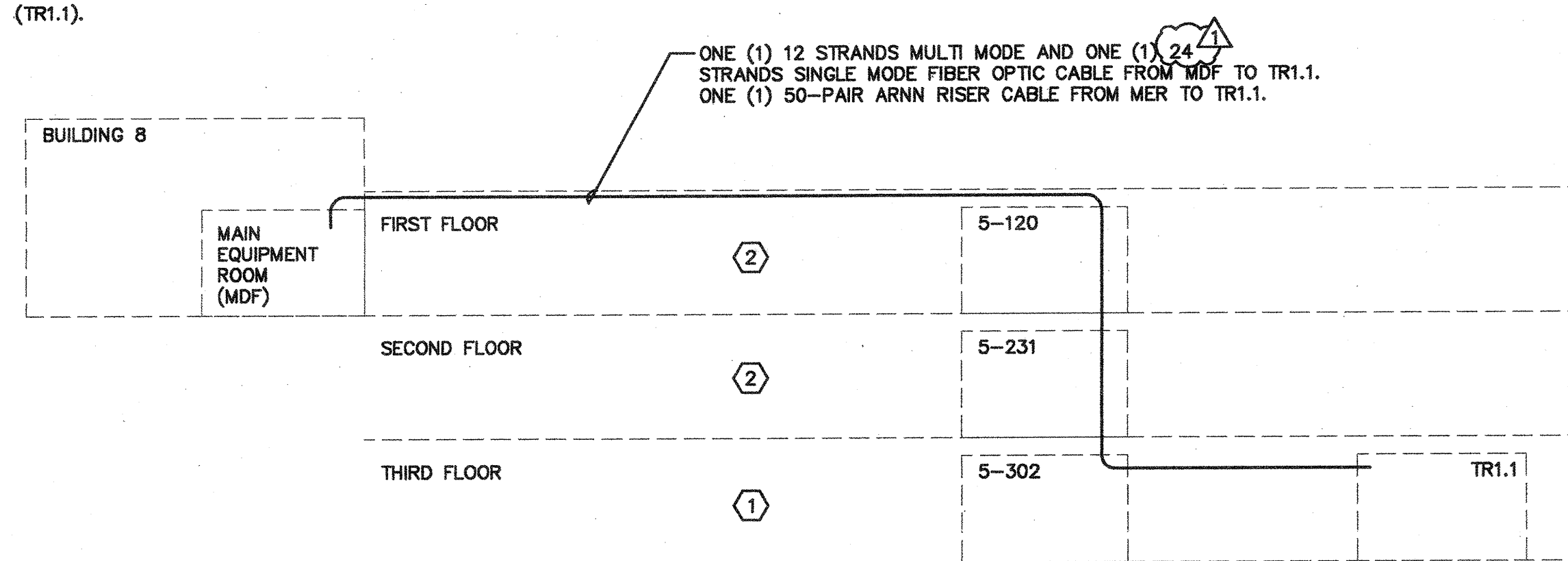


6 TWIN SURFACE RACEWAY DETAIL

NO SCALE

DETAIL KEYNOTES

- 1 ALL 4-PAIR CABLES ON THIRD FLOOR SHALL TERMINATE IN BUILDING B MAIN EQUIPMENT ROOM (MER).
- 2 ALL 4-PAIR CABLES ON FIRST AND SECOND FLOORS SHALL TERMINATE ON FIRST FLOOR TELECOMMUNICATIONS ROOM (TR1.1).

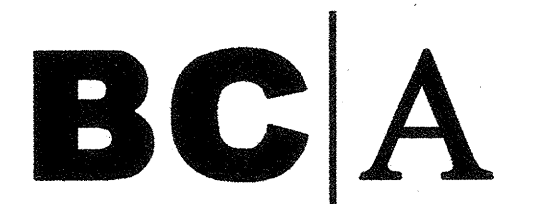


4 SIGNAL BACKBONE CABLE SINGLE-LINE DIAGRAM

NO SCALE

DETAIL KEYNOTES

- 1 TERMINATE ONE PAIR OF VOICE BACKBONE CABLE TO EACH PORT, PINS 4 & 5. LEAVE UNUSED PAIR UNTERMINATED.



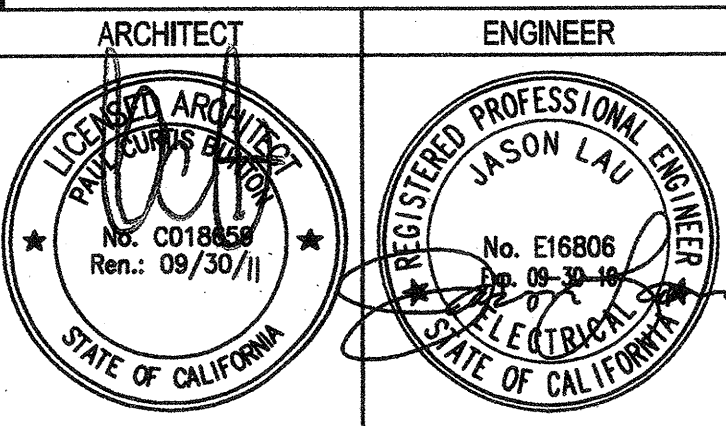
architecture
planning
interiors

Burton Clifford Associates, Inc.
210 Hammond Ave.
Fremont, California 94539
[T] 510.445.1000
[F] 510.445.1005
www.BCAincOnline.com

PROJECT 2007-0731
CONTACT Valeria Torres



717 Market Street
Suite 500
San Francisco, CA 94103
TEL 415.489.7240
FAX 415.489.7289
www.interfaceengineering.com



- GENERAL NOTES
- This sheet is part of a set and is not to be used alone.
 - This sheet is not to be used for construction unless the architect's stamp and signature appear on the drawings and the status box indicates drawings have been released for construction.
 - These plans and notes thereof, as instruments of service, are owned by the architect and are for use on this project only. Reproduction and/or distribution without the prior written consent of the architect is forbidden.
 - Copyright Burton Clifford Associates, 2007

REVISIONS	DATE
ADDENDUM NO. 1	09/18/09

DATE
USA PLAN CHECK 08/28/08
USA RACK CHECK 01/22/09
BIDDING (BID #88933) 09/18/09
CONSTRUCTION

FILE NO. 41-C1

IDENTIFICATION STAMP
DIV. OF THE STATE ARCHITECT

01-110074

AC FLS SS

DATE

BUILDINGS 5 & 6
RENOVATIONS

San Mateo County Community
College District

BID ADDENDA

APPROVED
DIV. OF THE STATE ARCHITECT
AG 10/17/08 P.A.S. RC-SS
APPL NO. 40074 DATE 3/17/10

CAÑADA COLLEGE
4200 Farm Hill Boulevard
Redwood City, CA 94061

ENLARGED FLOOR PLANS
AND ELEVATIONS

Date 08/29/08
Scale AS NOTED
Project Number 07013
Drawing Number T5.1