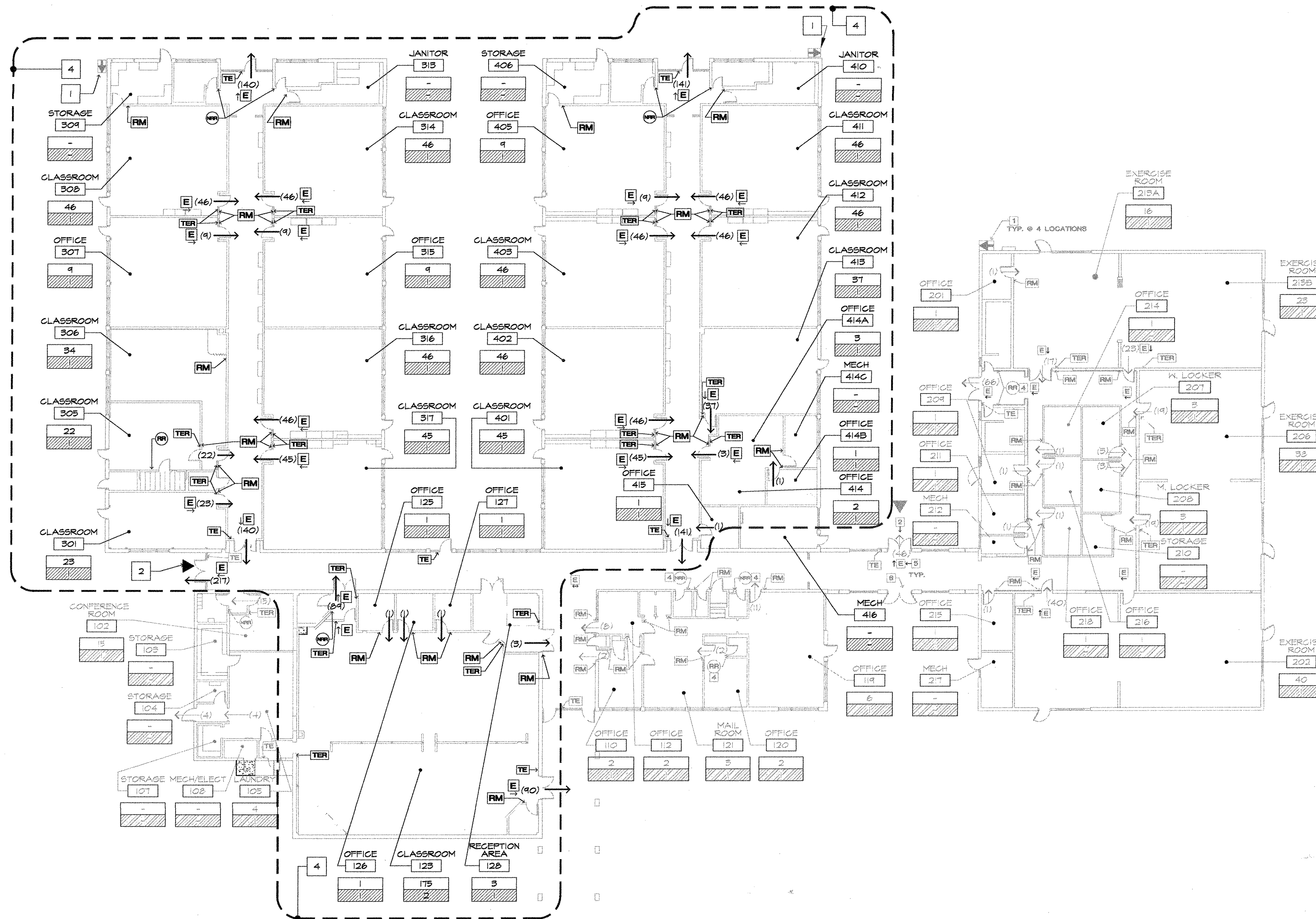


OCCUPANCY LOAD TABLE

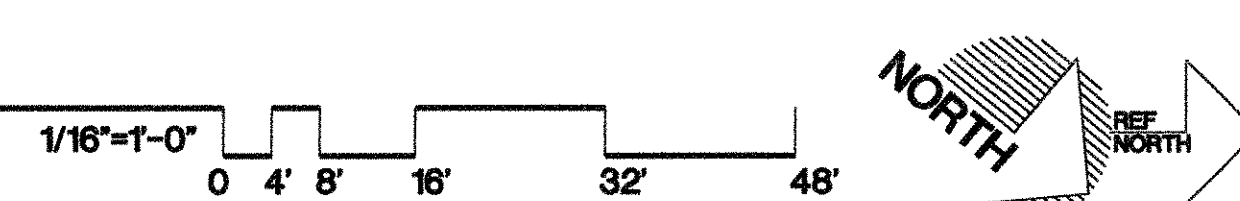
BUILDING 7/8 SWING SPACES AT PACIFIC HEIGHTS MIDDLE SCHOOL

ROOMS / SPACES	USE (PER UBC TABLE 10-A)	AREA (S.F.)	OCCUPANT LOAD FACTOR SQ. FT./PERSON	OCCUPANT LOAD	REMARKS		
102	CONFERENCE ROOM	4	ASSEMBLY AREA	231	15	15	-
103	STORAGE	26	STORAGE	121	-	-	-
104	STORAGE	26	STORAGE	45	-	-	-
105	LAUNDRY	50	ALL OTHERS	402	100	4	-
107	STORAGE	26	STORAGE	51	-	-	-
108	MECH/ELECT.	21	MECH. EQPM. RM.	41	-	-	-
110	OFFICE	23	OFFICE	196	100	2	-
112	OFFICE	23	OFFICE	126	100	2	-
114	OFFICE	23	OFFICE	632	100	6	-
120	OFFICE	23	OFFICE	188	100	2	-
121	MAIL ROOM	30	ALL OTHERS	312	100	3	-
201	OFFICE	23	OFFICE	97	100	1	-
202	EXERCISE ROOM	12	EXERCISE RM.	2030	50	41	-
206	EXERCISE ROOM	12	EXERCISE RM.	2152	50	43	-
207	WOMEN LOCKER	18	LOCKER ROOM	125	50	3	-
208	MEN LOCKER	18	LOCKER ROOM	125	50	3	-
209	OFFICE	23	OFFICE	152	100	2	-
210	STORAGE	26	STORAGE	104	-	-	-
211	OFFICE	23	OFFICE	97	100	1	-
212	MECH. ROOM	21	MECH. EQPM. RM.	42	-	-	-
213	EXERCISE ROOM	12	EXERCISE RM.	2154	50	43	-
214	OFFICE	23	OFFICE	122	100	1	-
215	OFFICE	23	OFFICE	130	100	1	-
216	OFFICE	23	OFFICE	122	100	1	-
217	MECH. ROOM	21	MECH. EQPM. RM.	135	-	-	-
218	OFFICE	23	OFFICE	173	100	2	-
415	OFFICE	23	OFFICE	114	100	1	-
416	MECH. ROOM	21	MECH. EQPM. RM.	230	-	-	-

ROOMS / SPACES	USE (PER UBC TABLE 10-A)	AREA (S.F.)	OCCUPANT LOAD FACTOR SQ. FT./PERSON	OCCUPANT LOAD	REMARKS		
123	CLASSROOM	7	CLASSROOM	3443	20	175	-
125	OFFICE	23	OFFICE	98	100	1	-
126	OFFICE	23	OFFICE	98	100	1	-
127	OFFICE	23	OFFICE	98	100	1	-
128	RECEPTION AREA	30	ALL OTHERS	317	100	3	-
301	CLASSROOM	7	CLASSROOM	468	20	23	-
305	CLASSROOM	7	CLASSROOM	433	20	22	-
306	CLASSROOM	7	CLASSROOM	675	20	34	-
307	OFFICE	23	OFFICE	901	100	9	-
308	CLASSROOM	7	CLASSROOM	910	20	46	-
309	STORAGE	26	STORAGE	188	-	-	-
313	JANITOR	30	ALL OTHERS	142	-	-	-
314	CLASSROOM	7	CLASSROOM	910	20	46	-
315	OFFICE	23	OFFICE	910	100	9	-
316	CLASSROOM	7	CLASSROOM	910	20	46	-
317	CLASSROOM	7	CLASSROOM	908	20	45	-
401	CLASSROOM	7	CLASSROOM	908	20	45	-
402	CLASSROOM	7	CLASSROOM	911	20	46	-
403	CLASSROOM	7	CLASSROOM	911	20	46	-
405	OFFICE	23	OFFICE	910	100	9	-
406	STORAGE	26	STORAGE	188	-	-	-
410	JANITOR	30	ALL OTHERS	142	-	-	-
411	CLASSROOM	7	CLASSROOM	910	20	46	-
412	CLASSROOM	7	CLASSROOM	910	20	46	-
413	CLASSROOM	7	CLASSROOM	737	20	37	-
414	OFFICE	23	OFFICE	194	100	2	-
414A	OFFICE	23	OFFICE	262	100	3	-
414B	OFFICE	23	OFFICE	128	100	1	-
414C	MECH	21	MECH. EQPM. RM.	117	-	-	-



CODE ANALYSIS, EXITING, OCCUPANCY & OCCUPANT LOAD PLAN PACIFIC HEIGHTS



GENERAL NOTES

- PENDING APPROVAL IN FIELD BY LOCAL AUTHORITY AND DSA INSPECTOR. CONTRACTOR TO COORDINATE APPROVAL OF SIGNAGE LOCATION IN FIELD WITH ALL AUTHORITIES HAVING JURISDICTION.

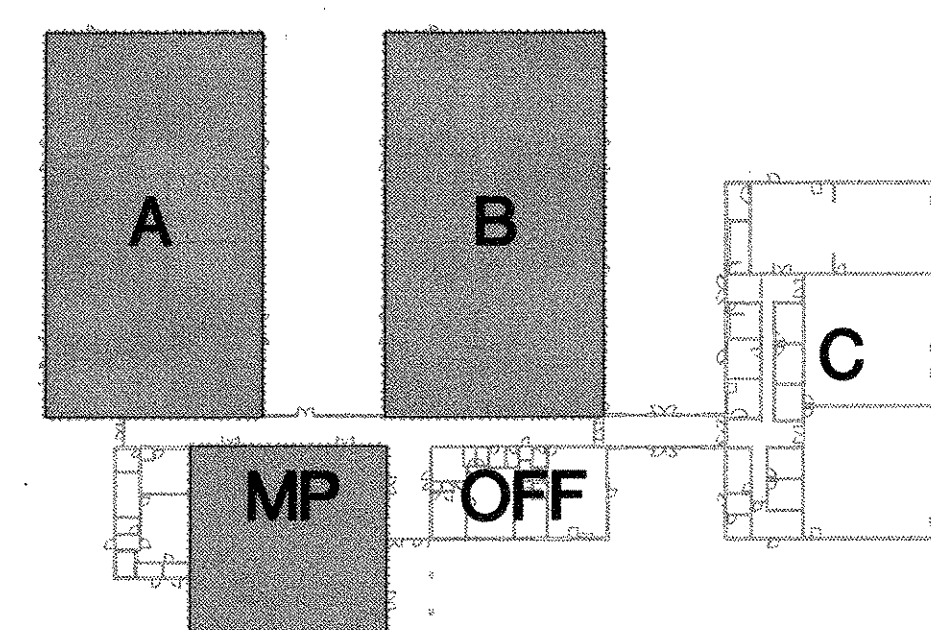
KEYED NOTES (AS INDICATED BY [])

1. DENOTES BUILDING ACCESSIBILITY DIRECTIONAL SIGNAGE, SUBMITTED UNDER DSA# 01-103916.
2. DENOTES ACCESSIBLE BUILDING ENTRANCE SIGN, SUBMITTED UNDER DSA# 01-103916.
3. NOT USED.
4. DENOTES PROJECT AREA.

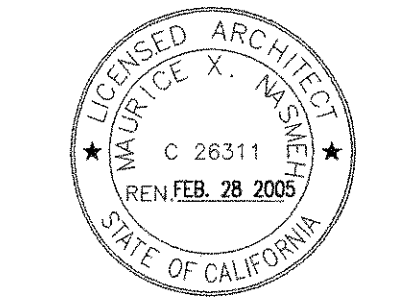
SIGNAGE LEGEND:

- ENTRANCE SIGN
DENOTES (E) ACCESSIBLE BUILDING ENTRANCE SIGN, SUBMITTED UNDER DSA # 01-103916
- DIRECTIONAL SIGN
DENOTES (N) ACCESSIBLE BUILDING ENTRANCE SIGN, SUBMITTED UNDER DSA # 01-103916
- RESTROOM SIGN
PER DETAIL 3/A9.1 & 17/A9.4
- NON-ACCESSIBLE RESTROOM SIGN
PROVIDE & INSTALL (N) SIGN TO READ AS FOLLOWS: "NOT AN ACCESSIBLE RESTROOM USE RESTROOM". REFER TO DETAIL 10/A9.4.
- EXIT SIGN
ARROW INDICATES TRAVEL DIRECTION ARROW ON SIGNAGE
SEE DETAIL 12/A9.4
- TACTILE EXIT SIGN
PER DETAIL 12/A9.4
- TACTILE EXIT ROUTE SIGN
PER DETAIL 16/A9.1

KEY PLAN



Sugimura & Associates Architects
 Architecture • Planning • Interiors
 Landscape Architecture
 2155 South Bascom Ave., Suite 200
 Campbell, CA 95008
 408-879-0600 Fax 408-377-6066
 © 2003 Sugimura & Associates Architects
 CDRRIGHT



IDENTIFICATION STAMP
 OFFICE OF REGULATION SERVICES
 APP. NO. _____
 AC. _____
 DATE _____
 Division of the State Architect
 195 Clay St., Suite 1901
 Oakland, CA 94612

CODE ANALYSIS, EXITING, OCCUPANCY, HEIGHTS
 AND OCCUPANT LOAD PLAN - PACIFIC HEIGHTS
 SKYLINE COLLEGE SWING SPACE
 PERMIT PACKAGE #3
 SKYLINE COLLEGE
 3300 COLLEGE DRIVE
 SAN BRUNO, CA 94066

NO.	ITEM	DATE
1	DSA BACKCHECK	9/28/04
2	CONSTRUCTION ISSUE	6/10/04
3	CONFORM SET	4/10/04

CLIENT APPROVAL:
 DRAWN BY: KH
 CHECKED BY:
 JOB NO: 2145,002
 DATE: 13 FEB 2004

T4.0
 OF SHEETS