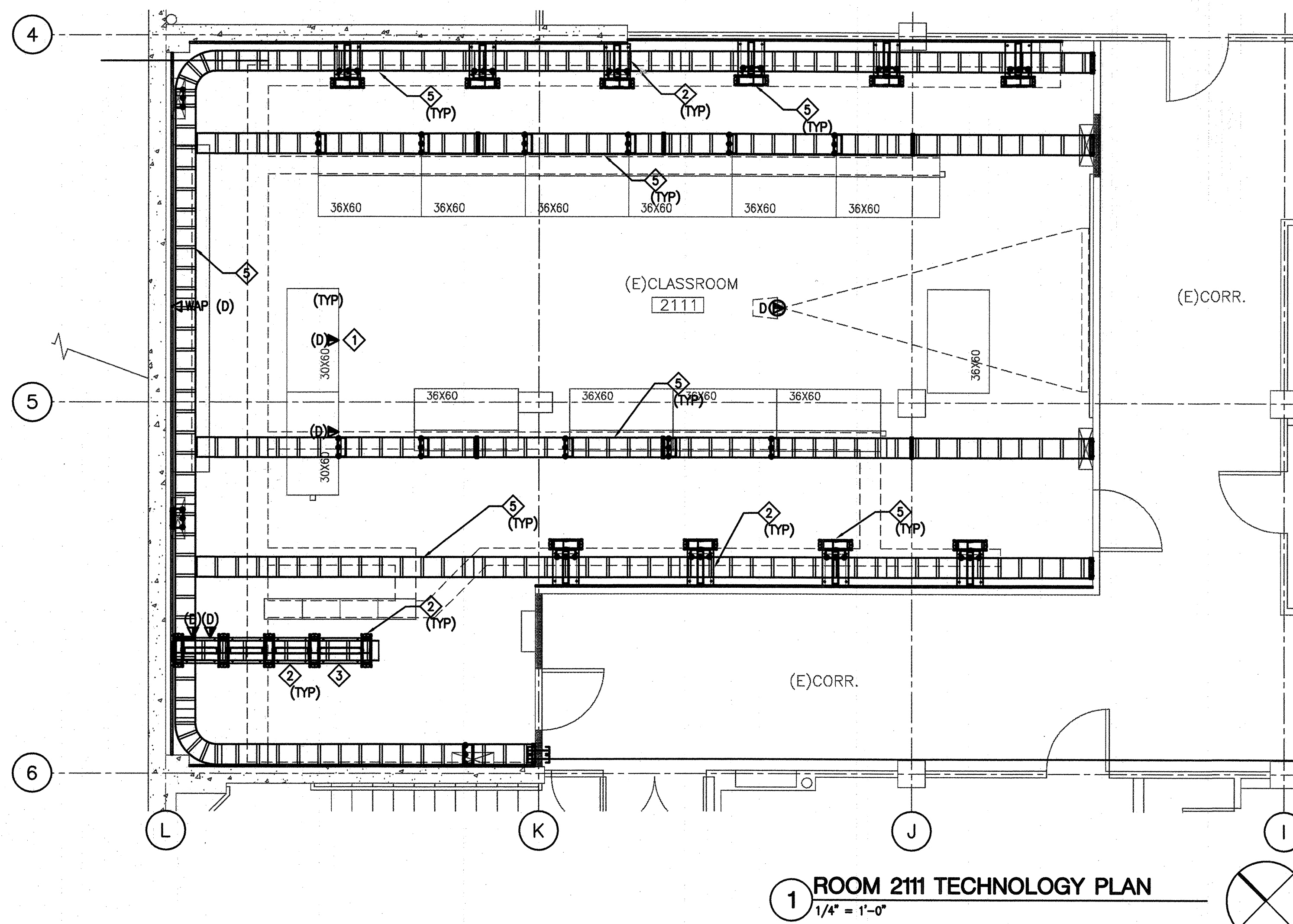
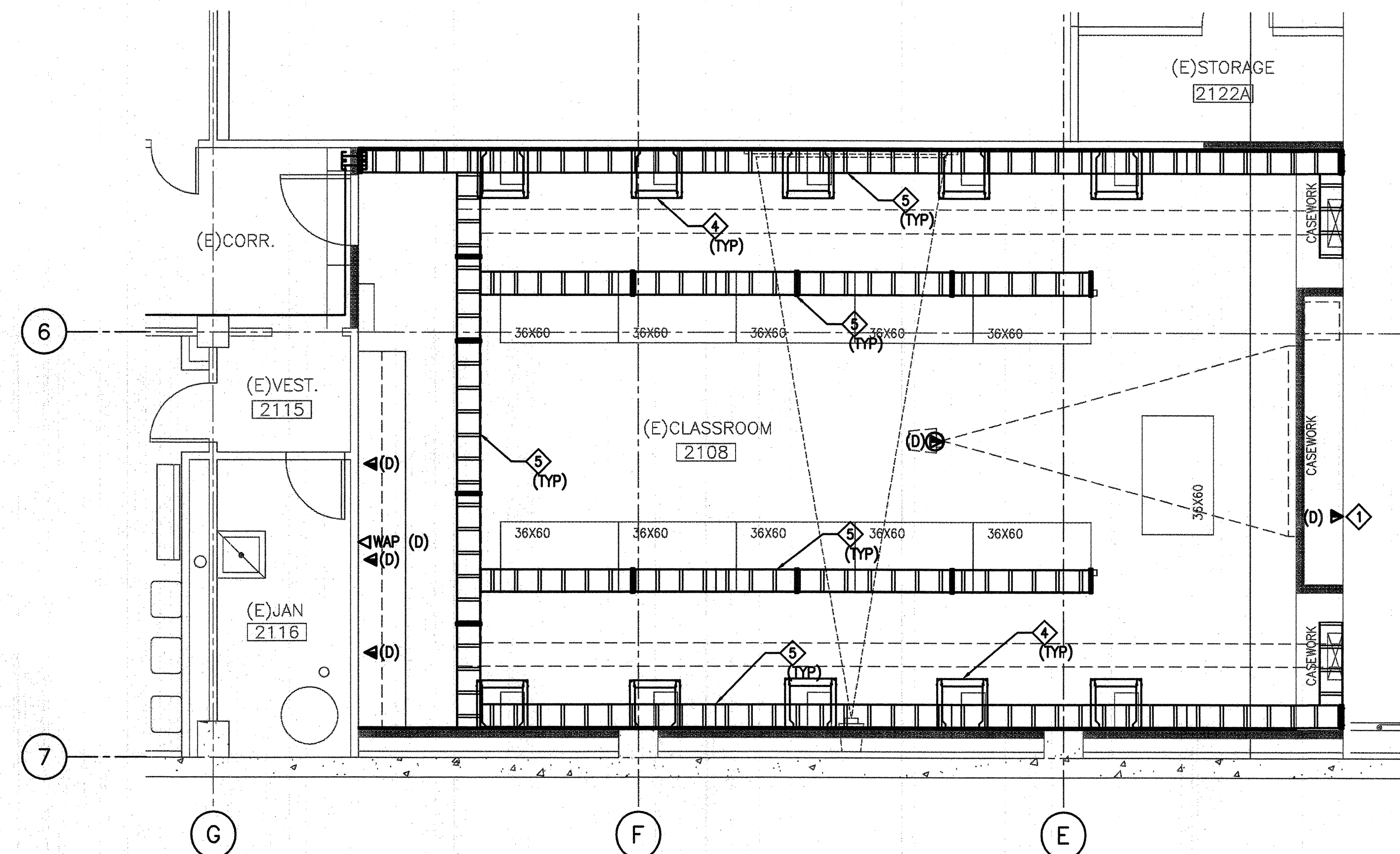


Copyright 2005 Steiner Architects. All Rights Reserved. This plan and its specifications are intended for the sole benefit of TCOM and may not be used, copied, reproduced, or represented in any form without the express written consent of Steiner Architects.

UNIVERSITY OF CALIFORNIA, SAN DIEGO
 9500 LA JOLLA VILLAGE DRIVE, SAN DIEGO, CALIFORNIA 92161-0001
 TEL: 619-594-5800 FAX: 619-594-5801

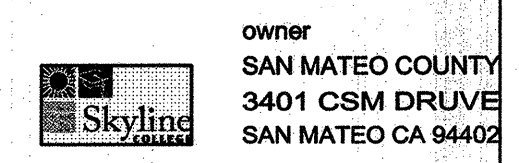


1 ROOM 2111 TECHNOLOGY PLAN
 1/4" = 1'-0"



2 ROOF 2108 TECHNOLOGY PLAN
 1/4" = 1'-0"

- NOTES:
- 1 (2) CATEGORY 6 UTP CABLES CONNECT TO DISTRICT NETWORK AT EXISTING MDF.
 - 2 STANDARD 19" EQUIPMENT RACK, BLACK IN COLOR.
 - 3 STANDARD 23" EQUIPMENT RACK, BLACK IN COLOR.
 - 4 STANDARD 19" SWING RACK, WALL MOUNTED, BLACK IN COLOR.
 - 5 6" VERTICAL WIRE MANAGER, BLACK IN COLOR
 - 6 STANDARD 12" LADDER RACK, BLACK IN COLOR

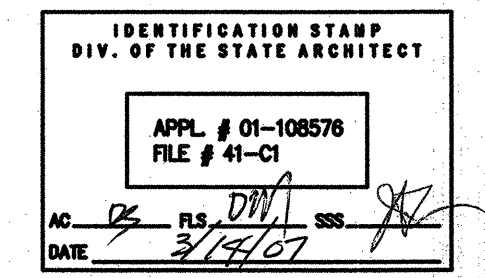
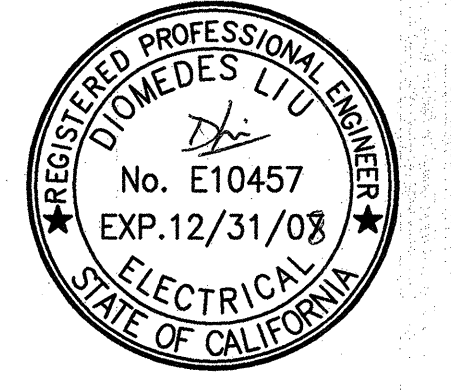


owner
 SAN MATEO COUNTY
 3401 GISM DRIVE
 SAN MATEO CA 94402

architect
 STEINBERG ARCHITECTS
 603 W. 6th St. Suite 100
 San Angelo, TX 76901

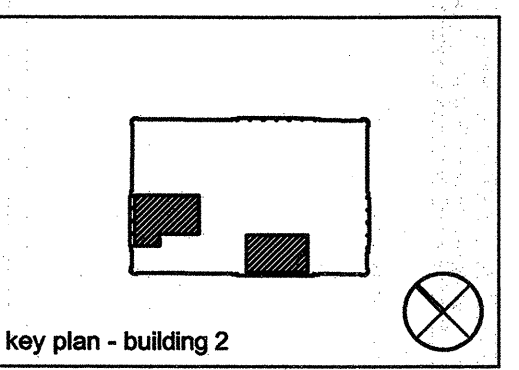


150 MONTGOMERY STREET, SUITE 710 415-403-3000
 SAN FRANCISCO, CALIFORNIA 94104 FAX: 415-778-8000
 SAN JOSE • SAN FRANCISCO • NEW YORK • NEW JERSEY
 LOS ANGELES • PALO ALTO • SINGAPORE • AUSTRALIA
 #1000 2002



02.02.07 DSA SUBMITTAL
 DSA BACKCHECK

rev. date issue



STEINBERG ARCHITECTS
 project no: 06044 date: 03/15/07
 drawn by: MVP checked by: JW
 scale: 1/4" = 1'-0" 1 2 3 4 5 6 7 8 9 10 11 12