

# ABBREVIATIONS

CL	CENTERLINE	MAT.	MATERIAL
Ø	DIAMETER OR ROUND ANGLE	MAX.	MAXIMUM
Δ		M.C.	MEDICINE CABINET
ACOUS.	ACOUSTICAL	MECH.	MECHANICAL
ADJ.	ADJUSTABLE	MEMB.	MEMBRANE
AGG.	AGGREGATE	MET.	METAL
AL.	ALUMINUM	MFR.	MANUFACTURER
APPROX.	APPROXIMATE	MIN.	MINIMUM
ARCH.	ARCHITECTURAL	M	MIRROR (FRAMED)
A.P.L.	ASSUMED PROPERTY LINE	MISC.	MISCELLANEOUS
A.F.F.	ABOVE FINISH FLOOR	M.O.	MASONRY OPENING
ADD'L	ADDITIONAL	MTD.	MOUNTED
		MULL.	MULLION
		MS	MEDICAL GAS PANEL
		M.B.	MACHINE BOLT
		MK	MARKER BOARD
		MBH	MOP AND BROOM HOLDER
BD.	BOARD	(N)	NEW
BITUM.	BITUMINOUS	N.I.C.	NOT IN CONTRACT
BLDG.	BUILDING	NO. or #	NUMBER
BLKG.	BLOCKING	NOM.	NOMINAL
BM.	BEAM	N.T.S.	NOT TO SCALE
BOT.	BOTTOM		
CAB.	CABINET	O.A.	OVERALL
C.B.	CATCH BASIN	O.C.	ON CENTER
C.T.	CERAMIC TILE	O.D.	OUTSIDE DIAMETER
C.C.T.	CUBICLE CURTAIN TRACK	OFF.	OPPOSITE
C.I.	CAST IRON	O.F.D.	OVERFLOW DRAIN
CLS.	CELING		
CLR.	CLEAR	PEN.	PENETRATION(S)
COL.	COLUMN	PL.	PLATE
CONC.	CONCRETE	PLAM.	PLASTIC LAMINATE
CONT.	CONTINUOUS	PLYWD.	PLYWOOD
CORR.	CORRIDOR	FR.	FAIR
CTSK.	COUNTERSUNK	FTD.	FLOOR TOWEL DISPENSER
C.M.U.	CONCRETE MASONRY	P.A.D.	POWER ACTUATED DEVICE
C.D.U.	COMBINATION DISPENSING UNIT	P.I.P.	POURED-IN-PLACE
		P.T.	PRESSURE TREATED
DBL.	DOUBLE	Q.T.	QUARRY TILE
DEPT.	DEPARTMENT		
D.F.	DRINKING FOUNTAIN	R.	RISER
DET.	DETAIL	RAD.	RADIUS
DIA.	DIAMETER	R.D.	ROOF DRAIN
DIM.	DIMENSION	REF.	REFERENCE
DISP.	DISPENSER	REFR.	REFRIGERATOR
DN.	DOWN	REINF.	REINFORCED
DR.	DOOR	REQD.	REQUIRED
DS.	DOWNSPOUT	RESIL.	RESILIENT
DWS.	DRAINING	R.H.	ROBE HOOK
D.D.	DECK DRAIN	RM.	ROOM
D.F.	DOUGLAS FIR	R.O.	ROUGH OPENING
		RT	RESILIENT TILE
		RWD.	REDWOOD
		R.W.L.	RAIN WATER LEADER
(E)	EXISTING	S.C.	SOLID CORE
EA.	EXPANSION JOINT	SCD.	SEAT COVER DISPENSER
E.J.	EXPANSION JOINT	SCHED.	SCHEDULE
EL.	ELEVATION	SD	SOAP DISPENSER
ELEC.	ELECTRICAL	SECT.	SECTION
ELEV.	ELEVATOR	SH.	SHELF
EMERG.	EMERGENCY	SHWR.	SHOWER
ENCL.	ENCLOSURE	SHT.	SHEET
EQ.	EQUAL	SIM.	SIMILAR
EQPT.	EQUIPMENT	S.M.S.	SHEET METAL SCREW
EWG.	ELECTRIC WATER COOLER	STD.	STANDARD
EXP.	EXPANSION	STL.	STEEL
EXT.	EXTERIOR	STOR.	STORAGE
		STR.	STRUCTURAL
		SUSP.	SUSPENDED
		S.W.A.G.	SCIENTIFIC WILD ASS GUESS
F.A.	FIRE ALARM	T.D.	TRENCH DRAIN
F.C.O.	FLOOR CLEAN OUT	TRD.	TREAD
F.D.	FLOOR DRAIN	T.B.	TOWEL BAR
FDN.	FOUNDATION	T.C.C.	TOP OF CURB/CONCRETE
F.E.	FIRE EXTINGUISHER	TEL.	TELEPHONE
F.E.C.	FIRE EXTINGUISHER CAB.	TER.	TERRAZZO
F.H.C.	FIRE HOSE CABINET	T & G.	TONGUE AND GROOVE
FIN.	FINISH	THK.	THICK
FL.	FLOOR	TK.BD.	TACKBOARD
FLUOR.	FLUORESCENT	T.P.	TOP OF PAVEMENT OR TELEPHONE PANELBOARD
F.O.C.	FACE OF CONCRETE	T.P.D.	TOILET PAPER DISPENSER
F.O.F.	FACE OF FINISH	T.V.	TELEVISION
F.O.S.	FACE OF STUDS	TYP.	TYPICAL
F.S.S.	FOLDING SHOWER SEAT	T.O.S.	TOP OF STEEL
FT.	FOOT OR FEET	T.O.W.	TOP OF WALL
FTG.	FOOTING	U.O.N.	UNLESS OTHERWISE NOTED
FURR.	FURRING		
F.H.S.	FLAT HEAD SCREW	V.C.T.	VINYL COMPOSITION TILE
F.R.	FIRE RETARDANT	VDB.	VISUAL DISPLAY BOARD
		VERT.	VERTICAL
		VEST.	VESTIBULE
GA.	GAGE		
GALV.	GALVANIZED	W/	WITH
GL.	GLASS	W.A.G.	WILD ASS GUESS
GND.	GROUND	W.C.	WATER CLOSET
GYP.	GYPNUM	WD.	WOOD
G.W.B.	GYPNUM WALL BOARD	W/O	WITHOUT
GEN.	GENERAL	WP.	WATERPROOF
		WR	WASTE RECEPTACLE
		WT.	WEIGHT
H.B.	HOSE BIBB		
H.C.	HOLLOW CORE		
HCA.	HANDICAP ACCESSIBLE		
H.M.	HOLLOW METAL		
HORIZ.	HORIZONTAL		
HR.	HOUR		
I.D.	INSIDE DIAMETER		
INSUL.	INSULATION		
INT.	INTERIOR		
IVT.	INTRAVENOUS TRACK		
JAN.	JANITOR		
J.T.	JOINT		
KIT.	KITCHEN		
LAB.	LABORATORY		
LAM.	LAMINATE		
LAV.	LAVATORY		
LT.	LIGHT		

# GRAPHIC SYMBOLS

- GRAPHIC SYMBOLS REPRESENT OBJECTS, ELEMENTS, EQUIPMENT, INSTRUCTIONS, LOCATION, CONVENTIONS, ETC. THEY DO NOT REPRESENT THE SHAPE, SIZE, DIMENSION OF THE ACTUAL OBJECT.
- EACH DRAWING GROUP (I.E., MECHANICAL, ELECTRICAL) HAS ITS OWN SYMBOLS, ABBREVIATIONS, LEGEND AND NOTES. THE INFORMATION AND SYMBOLS ON THIS DRAWING ARE GENERAL AND APPLY TO ALL DRAWINGS.

## GENERAL SYMBOLS

	DOOR SYMBOL (LETTER DESIGNATES NUMBER OF DOOR IN ROOM) SEE PLAN AND DOOR SCHEDULE
	WINDOW TYPE SEE PLAN AND WINDOW SCHEDULE
	EQUIPMENT SYMBOL
	REVISION
	MATCH LINE SHADED PORTION IS THE SIDE CONSIDERED.
	WORK POINT, CONTROL POINT OR DATUM POINT
	SECTION IDENTIFICATION SHEET WHERE SECTION IS DRAWN
	DETAIL IDENTIFICATION SHEET WHERE DETAIL IS DRAWN
	INTERIOR ELEVATIONS (UNFOLD ELEVATIONS CLOCKWISE. SOLID ARROW INDICATES ELEVATION DRAWN) SHEET WHERE ELEVATION IS DRAWN.
	FLOOR PLANS, REFLECTED CEILING PLANS ROOM IDENTIFICATION, ROOM NAME, ROOM NUMBER
	DIMENSION LINES
	ALIGN FIN. FACE TO FIN. FACE
	LIMIT OF WORK

## PARTITIONS

	EXISTING WALL OR PARTITION TO REMAIN
	EXISTING WALL OR PARTITION TO BE REMOVED
	NEW PARTITIONS
	EXISTING DOORS TO REMAIN
	EXISTING DOOR TO BE REMOVED
	NEW DOORS FLOOR FINISH TRANSITION WHERE INDICATED AT CENTER LINE OF DOOR, TYPICAL.
	EXISTING WINDOW TO REMAIN
	EXISTING WINDOW TO BE REMOVED
	NEW WINDOW REFER TO SCHEDULE IN SPECIFICATIONS SECTION 08005.
	CHASE WALL PIPE OR PLUMBING

## EQUIPMENT

	ROBE HOOK
	CLOCK
	FIRE EXTINGUISHER CABINET
	HANDRAIL / WALL PROTECTION
	VISUAL DISPLAY BOARDS
	EMERGENCY EYEWASH / SHOWER
	CORNER GUARD
	EDGE GUARD

# MATERIAL NOTES

## 09900 - PAINTING

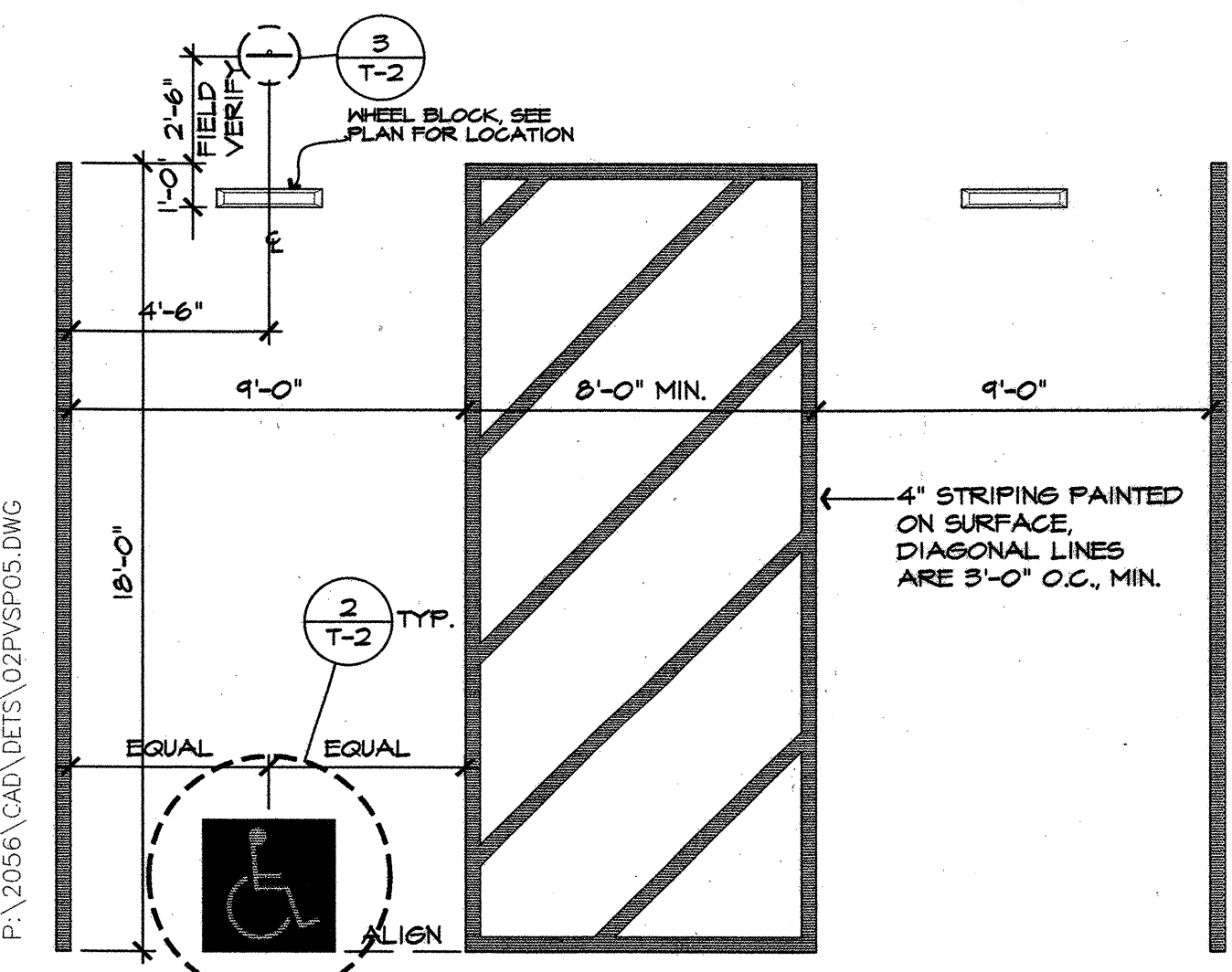
- TRAFFIC PAINT: PAINT FOR INDICATING PARKING SPACE STRIPING, DIRECTIONAL ARROWS, TRAFFIC LANES AND ACCESSIBILITY SYMBOLS ON PAVED SURFACES SHALL BE RAPID DRY TRAFFIC PAINT CONFORMING TO SEC. 84 OF THE STATE STANDARD SPECIFICATIONS.
- SEE DETAILS FOR DESCRIPTION OF TRAFFIC PAINT COLORS AT ACCESSIBILITY SYMBOLS.
- TRAFFIC PAINT AT FIRE LANE SHALL CONSIST OF 4" WIDE RED STRIPE, 12" HIGH BLOCK LETTERS READING "FIRE LANE - NO PARKING" IN RED TRAFFIC PAINT SHALL BE CENTERED ON THE PAVEMENT @ 150' O.C., TYP. AT PERIMETER OF WORK.

## 10426 - SIGNAGE

- SIGN POSTS SHALL BE 2" O.D. U.O.N. (W/ MALLEABLE IRON DOME POST CAPS).
- SIGNS REFERENCING ACCESSIBILITY OR ACCESSIBLE PARKING SHALL BE CONSTRUCTED AND INSTALLED TO COMPLY WITH THE CORRESPONDING SECTIONS OF THE FEDERAL A.D.A. REQUIREMENTS.
- SEE THE DETAILS REFERENCED ON THE SITE PLAN FOR ADDITIONAL SIGN NOTES.

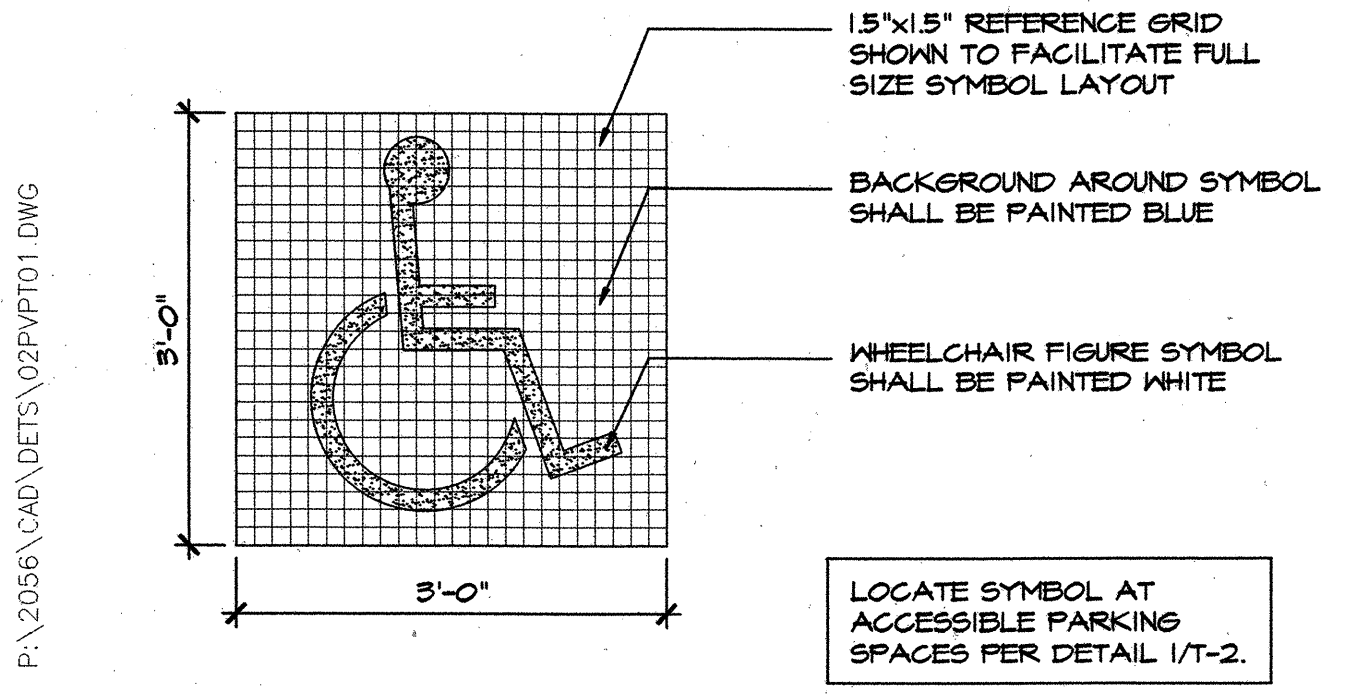
## 11160 - WHEEL BLOCKS

- WHEEL BLOCKS SHALL MEET PARKING STANDARDS AT SKYLINE COLLEGE, AND SHALL MATCH BLOCKS AT EXISTING ADJACENT PARKING LOT. INSTALL AND ANCHOR PER MANUF. RECOMMENDATIONS.
- WHEEL BLOCKS AT DISABLED PARKING STALLS SHALL HAVE A BLUE FINISH COLOR. ALL OTHER BLOCKS SHALL BE WHITE.



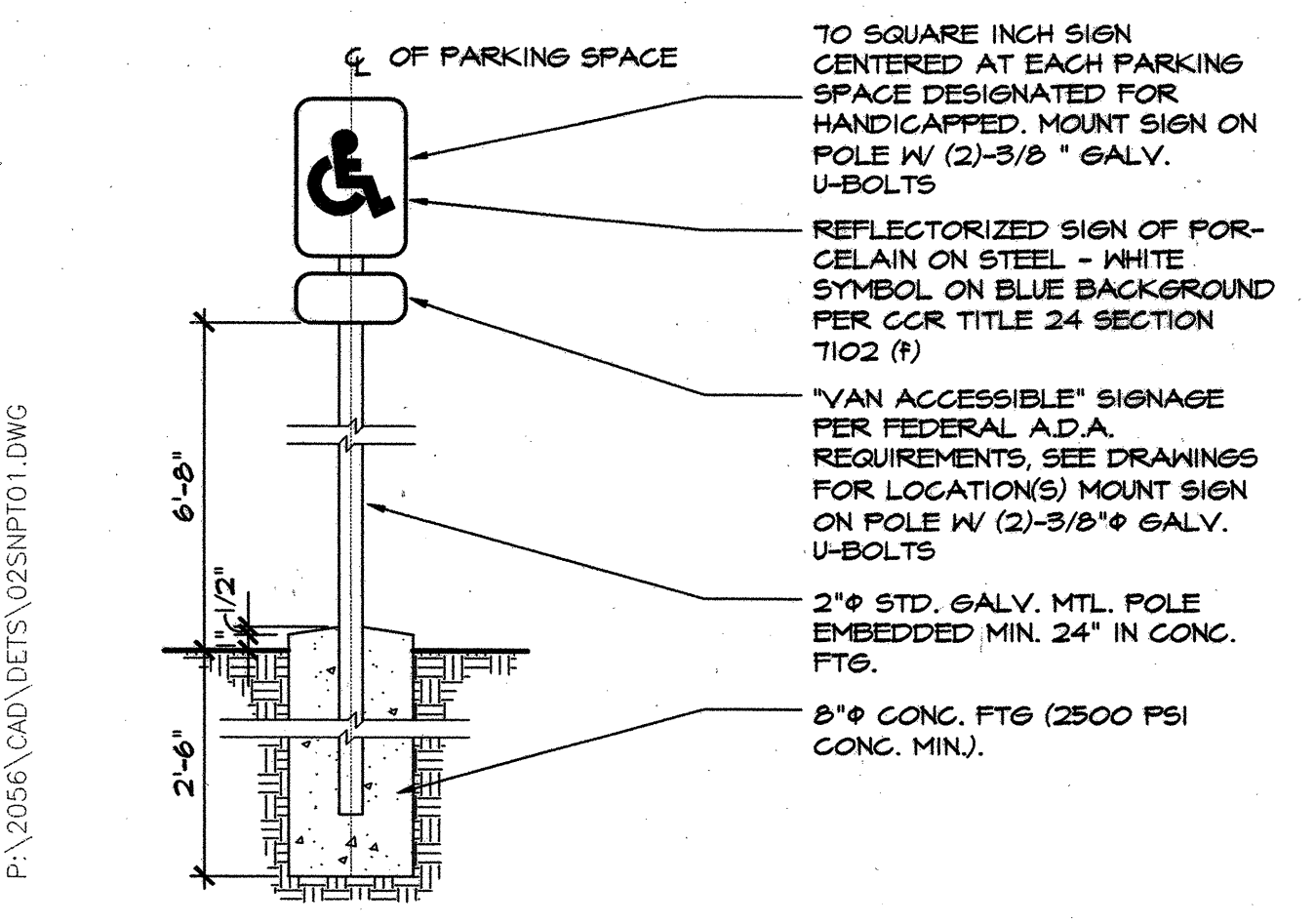
## 1 PARKING SPACE DESIGN (HANDICAPPED SPACE)

1/4"=1'-0"



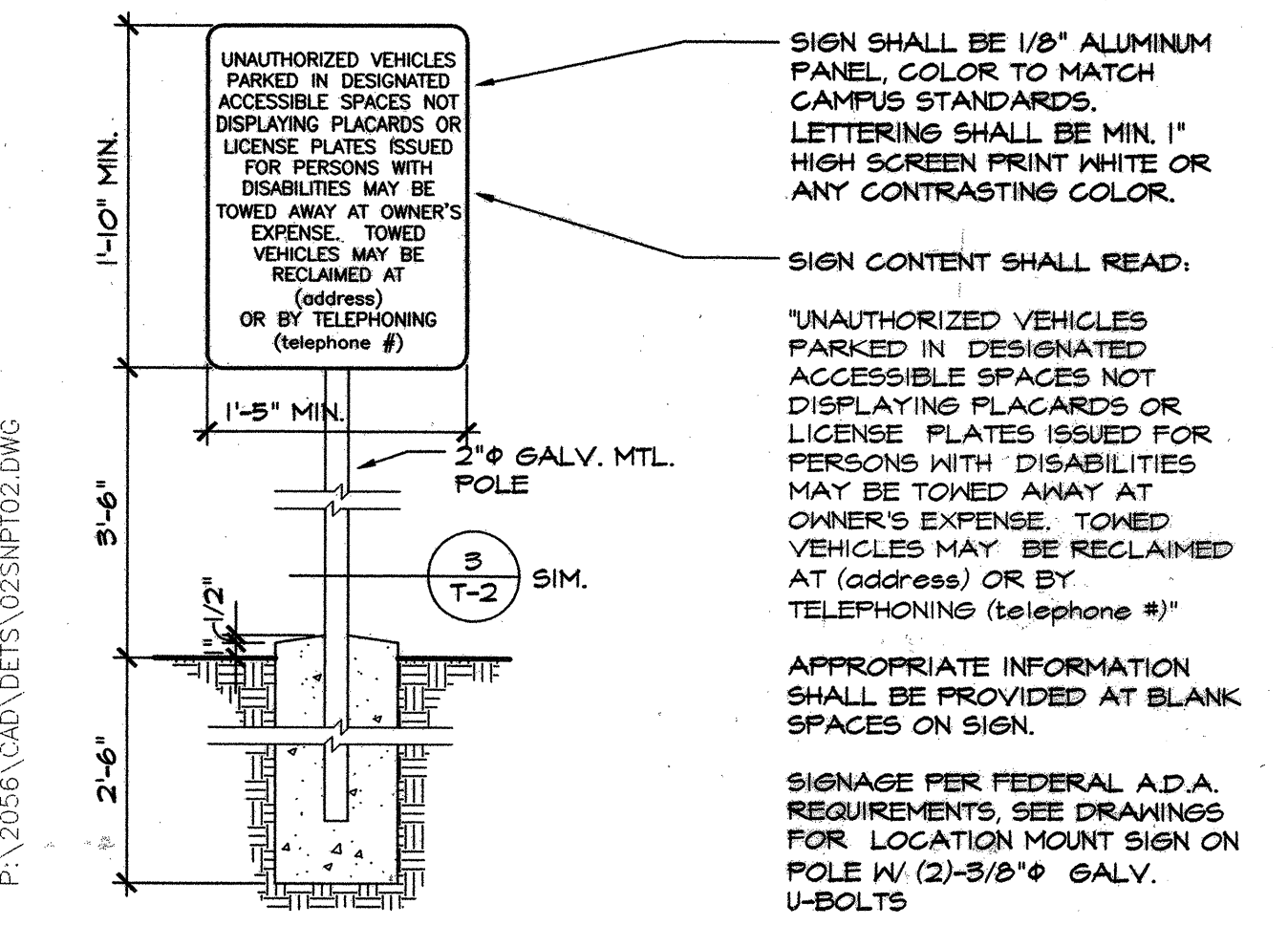
## 2 ACCESSIBILITY SYMBOL AT PARKING SPACE

3/4"=1'-0"



## 3 ACCESSIBILITY SIGN AT HANDICAPPED PARKING STALL

1"=1'-0"

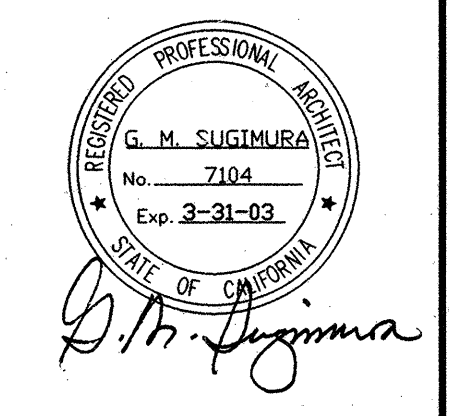


## 4 SITE ENTRANCE SIGN

1"=1'-0"

IDENTIFICATION STAMP  
DIVISION OF THE STATE ARCHITECT  
APPL01 104070  
AC 18 PLS SS CUPPET  
DATE

**Sugimura & Associates Architects**  
Architecture • Planning • Interiors  
Landscape • Irrigation  
2155 South Bascom Ave., Suite 200  
Campbell, CA 95008  
408-879-0600 Fx 408-377-6066  
COPYRIGHT © 2001 Sugimura & Associates/Architects



**ABBREVIATIONS, SYMBOLS, NOTES AND DETAILS**  
**FACILITIES MAINTENANCE CENTER**  
SKYLINE COLLEGE  
3300 COLLEGE DRIVE  
SAN BRUNO, CA 94066

REVISIONS		
NO.	ITEM	DATE

CLIENT APPROVAL:

DRAWN BY: **GNS**  
CHECKED BY: **DBP**  
JOB NO: 2129 DATE: 09/20/01