

LOAD ESTIMATE			
LOAD	KVA	DF	DKVA
LIGHTING	45	1	45
HVAC	146	1	146
RECPT. EQUIP.	70	-	40
EQUIP.	420	-	215
TOTAL:	681	2	446

ESTIMATED SERVICE REQUIRED: 357 KVA
ESTIMATED FEEDER SIZE: 429.176 A

FEEDER SCHEDULE

COPPER FEEDER SCHEDULE - 3 PHASE, 4 WIRE				
SYMBOL	AMPERES	PHASE/NEUTRAL	GROUND	CONDUIT
154	15A, 3PH4W	4-#12	#12	3/4"
204	20A, 3PH4W	4-#12	#12	3/4"
304	30A, 3PH4W	4-#10	#10	3/4"
404	40A, 3PH4W	4-#8	#10	3/4"
504	50A, 3PH4W	4-#8	#10	3/4"
604	60A, 3PH4W	4-#6	#10	1"
704	70A, 3PH4W	4-#4	#8	1 1/4"
804	80A, 3PH4W	4-#4	#8	1 1/4"
1004	100A, 3PH4W	4-#2	#6	1 1/4"
1254	125A, 3PH4W	4-#1	#6	1 1/2"
1504	150A, 3PH4W	4-#1/0	#6	2"
1754	175A, 3PH4W	4-#2/0	#4	2"
2004	200A, 3PH4W	4-#2/0	#4	2"
2254	225A, 3PH4W	4-#4/0	#4	2 1/2"
2504	250A, 3PH4W	4-#250 KCM	#4	2 1/2"
3004	300A, 3PH4W	4-#350 KCM	#4	3"
3504	350A, 3PH4W	4-#400 KCM	#4	3"
4004	400A, 3PH4W	4-#500 KCM	#2	3"
5004	500A, 3PH4W	(2) 4-#250 KCM	(2) #2	(2) 2 1/2"
6004	600A, 3PH4W	(2) 4-#350 KCM	(2) #1	(2) 3"
8004	800A, 3PH4W	(2) 4-#500 KCM	(2) #1/0	(2) 3"
10004	1000A, 3PH4W	(3) 4-#600 KCM	(3) #2/0	(3) 3"
12004	1200A, 3PH4W	(3) 4-#600 KCM	(3) #3/0	(3) 4"
16004	1600A, 3PH4W	(4) 4-#600 KCM	(4) #4/0	(4) 4"
20004	2000A, 3PH4W	(5) 4-#600 KCM	(5) #250 KCM	(5) 4"

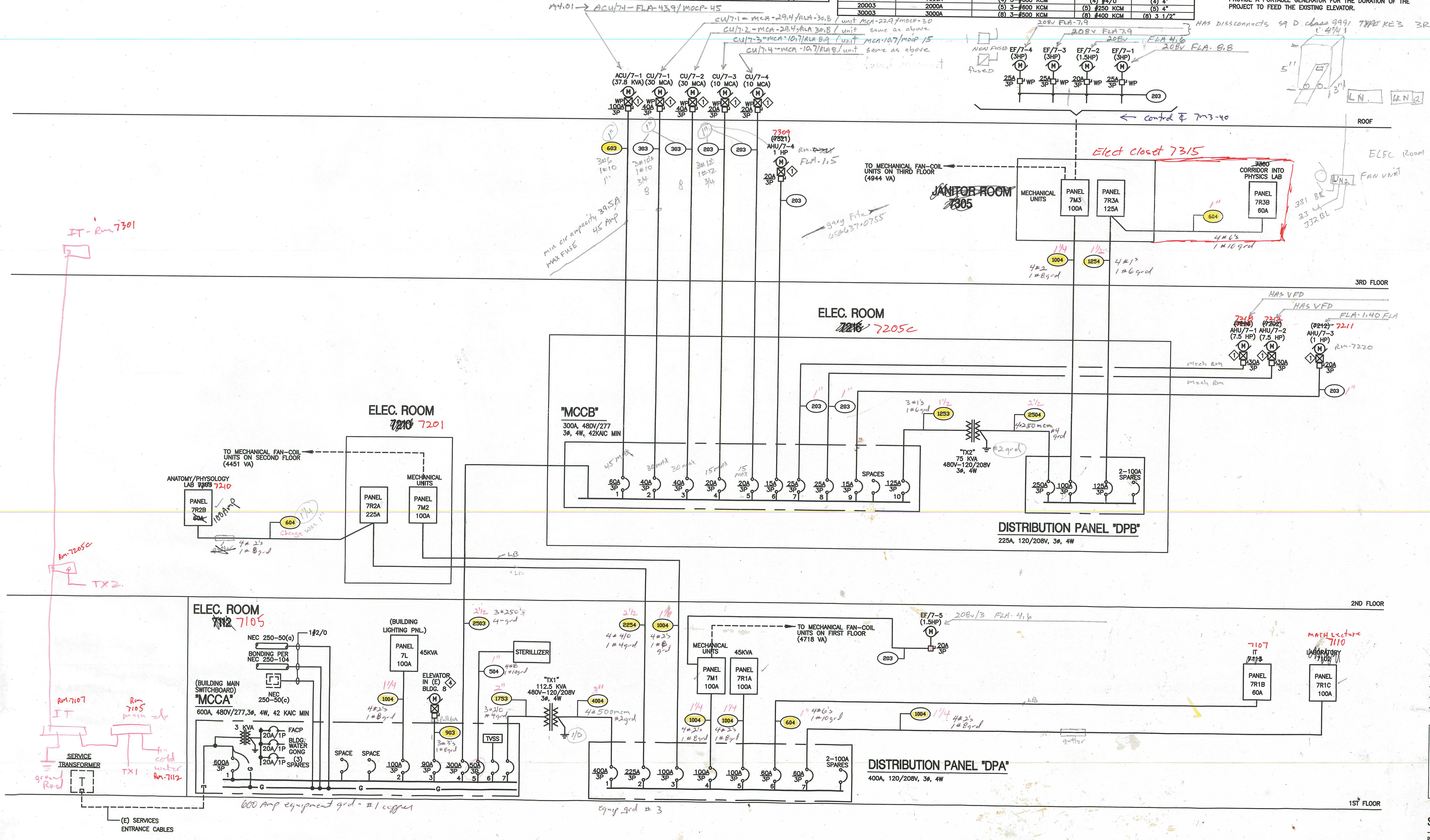
COPPER FEEDER SCHEDULE - 3 PHASE, 3 WIRE				
SYMBOL	AMPERES	PHASE/NEUTRAL	GROUND	CONDUIT
153	15A	3-#12	#12	3/4"
203	20A	3-#12	#12	3/4"
303	30A	3-#10	#10	3/4"
403	40A	3-#8	#10	3/4"
503	50A	3-#8	#10	3/4"
603	60A	3-#6	#10	1"
703	70A	3-#4	#8	1"
803	80A	3-#3	#8	1 1/4"
903	90A	3-#3	#8	1 1/4"
1003	100A	3-#3	#8	1 1/4"
1253	125A	3-#2	#6	1 1/2"
1503	150A	3-#1/0	#6	1 1/2"
1753	175A	3-#2/0	#4	2"
2003	200A	3-#2/0	#4	2"
2253	225A	3-#4/0	#4	2 1/2"
2503	250A	3-#250KCM	#4	2 1/2"
3003	300A	3-#350 KCM	#4	2 1/2"
3503	350A	3-#400 KCM	#2	3"
4003	400A	3-#500 KCM	#2	3"
5003	500A	(2) 3-#250 KCM	(2) #2	(2) 2 1/2"
6003	600A	(2) 3-#350 KCM	(2) #1/0	(2) 2 1/2"
7003	700A	(2) 3-#500 KCM	(2) #1/0	(2) 2 1/2"
8003	800A	(2) 3-#500 KCM	(2) #1/0	(2) 3"
10003	1000A	(3) 3-#600 KCM	(3) #2/0	(3) 3"
12003	1200A	(3) 3-#600 KCM	(3) #3/0	(3) 4"
16003	1600A	(4) 3-#600 KCM	(4) #4/0	(4) 4"
20003	2000A	(5) 3-#600 KCM	(5) #250 KCM	(5) 4"
30003	3000A	(8) 3-#500 KCM	(8) #400 KCM	(8) 3 1/2"

GENERAL NOTES

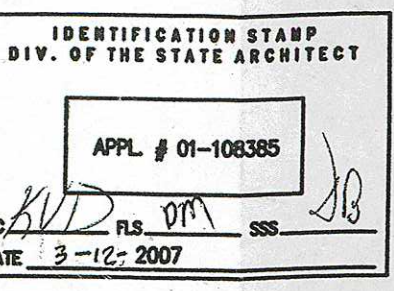
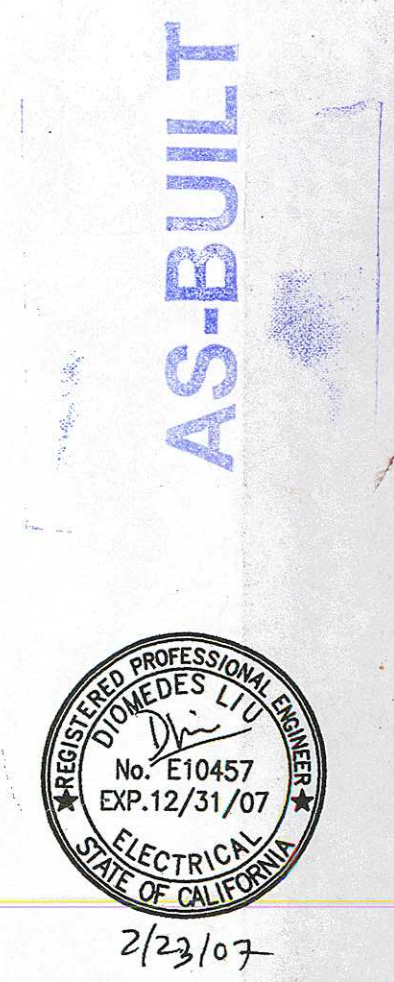
- ALL ELECTRICAL EQUIPMENT SHALL BE NEW U.O.N.
- SEE DEMOLITION SPECIFICATION REQUIREMENT FOR SALVAGING, CLEANING AND PACKING OF ALL EQUIPMENTS TO BE RETURNED TO OWNER FOR HIS SPARE PARTS INVENTORY.

SHEET NOTES:

- MOTOR STARTERS AND CONTROLLERS ARE PROVIDED BY DIVISION 15 CONTRACTOR AS PART OF HIS WORK.
- PROVIDE SIZE 1 FULL VOLTAGE, NON REVERSING STARTER WITH MATCHING OVERLOADS FOR ACTUAL MOTORS INSTALLED.
- PROVIDE SIZE 1 MANUAL STARTERS, NEMA 1 OR NEMA 3R BASED UPON LOCATION OF INSTALLATION.
- PROVIDE TEMPORARY POWER FOR BUILDING 8 ELEVATOR CURRENTLY FED FROM BUILDING 7 MCC. ELEVATOR MUST REMAIN OPERATIONAL DURING CONSTRUCTION. OPTION 1 IS TO FEED ELEVATOR FROM BUILDING 8 MCC; RUN FEEDER AROUND EXTERIOR OF BUILDING APPROXIMATELY 400'. OPTION 2 IS TO FEED ELEVATOR FROM BUILDING ADJACENT TO BUILDING 8; RUN FEEDER THROUGH BUILDING 8 ACCESSIBLE CEILING SPACES AND OLD ELEVATOR SHAFT APPROXIMATELY 200'. OPTION 3 IS TO PROVIDE A PORTABLE GENERATOR FOR THE DURATION OF THE PROJECT TO FEED THE EXISTING ELEVATOR.



SINGLE LINE DIAGRAM
NOT TO SCALE



REV.	DATE	DESCRIPTION	ISSUE
02.27.07		DSA BACK CHECK	
11.02.06		DSA SUBMITTAL	
10.13.06		75% CD	
09.12.06		40% PROGRESS	

