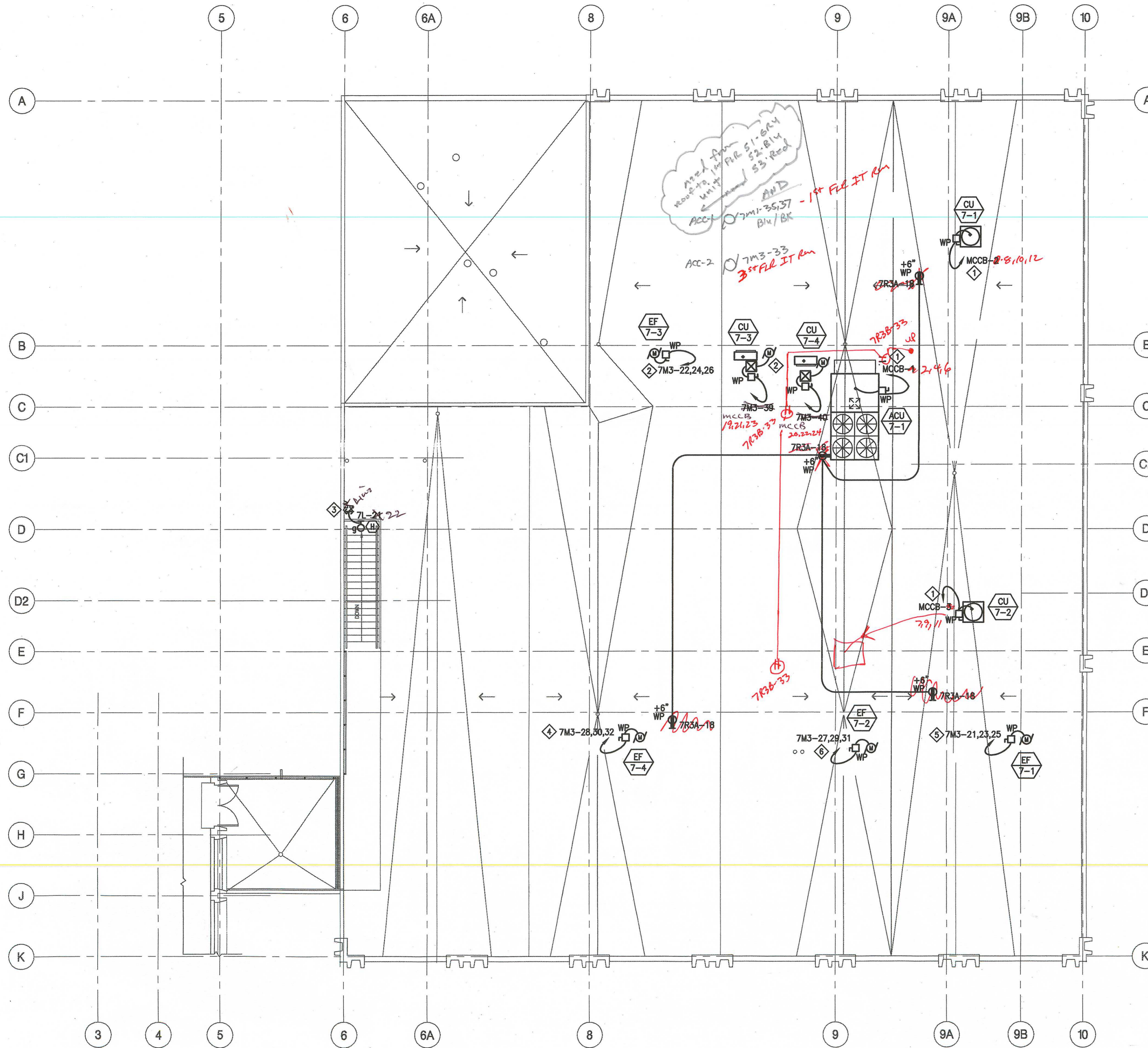
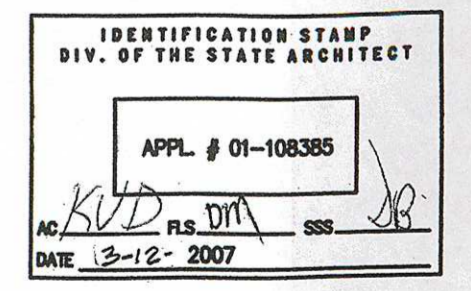


SHEET NOTES

- ① CIRCUIT TO "MCCB" ON 2ND FLOOR. SEE SINGLE LINE DIAGRAM FOR FEEDER SIZES. FAN CONTROL IS VIA THE BMS SYSTEM (DIV.15).
- ② PROVIDE POWER CIRCUIT CONNECTION BETWEEN CU CONTROLLER AND ECONOMIZER MOTOR PER MANUFACTURER'S REQUIREMENTS.
- ③ LOW VOLTAGE LIGHT SWITCH LOCATED ON WALL OF INTERIOR CORRIDOR LEADING TO EXTERIOR STAIR TO ROOF.
- ④ TO PANEL "7M3" (3RD FLOOR) VIA HOOD ON-OFF SWITCH. HOOD IS LOCATED ON 2ND FLOOR. SEE SHEET NOTE 15 IN DWG. E3.02.
- ⑤ TO PANEL "7M3" (3RD FLOOR) VIA HOOD ON-OFF SWITCH OR WALL-SWITCH LOCATED IN ROOM 7203 (CADAVER OBSERVATION). CONFIRM EXACT SWITCH LOCATION PRIOR TO ROUGH-IN. SEE SHEET NOTE 14 IN DWG. E3.02.
- ⑥ TO PANEL "7M3" (3RD FLOOR). FAN CONTROL IS VIA THE BMS SYSTEM (DIV.15).



1 ROOF POWER AND LIGHTING PLAN
1/8" = 1'-0"



REV.	DATE	ISSUE
02.27.07		DSA BACK CHECK
11.02.06		DSA SUBMITTAL
10.13.06		75% CD
09.12.06		40% PROGRESS

