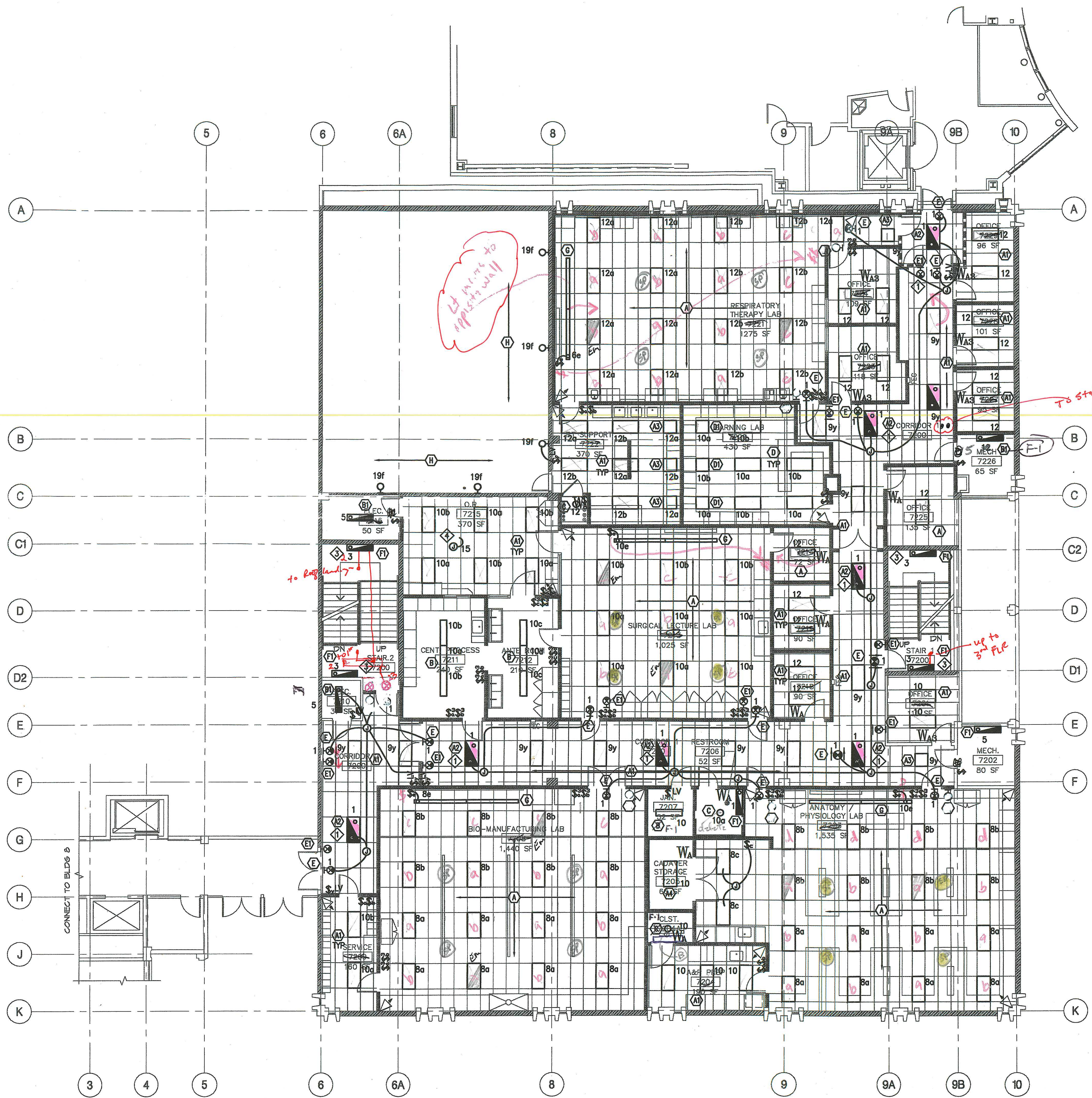


SHEET NOTES

- ◆ PROVIDE AN ADDITIONAL UNSWITCHED HOT WIRE TO THE FIXTURE BATTERY PACK FOR VOLTAGE SENSING.
- ◆ ALL CIRCUITS SHALL BE CONNECTED TO PANEL "7L". U.O.N.
- ◆ EXISTING CONDUIT IN STAIRWELL MAYBE REUSED AND EXTENDED TO NEW FIXTURE LOCATIONS SHOWN.
- ◆ J-BOX FOR SURGICAL LIGHT (N.I.C.).



clocks
- 18th -

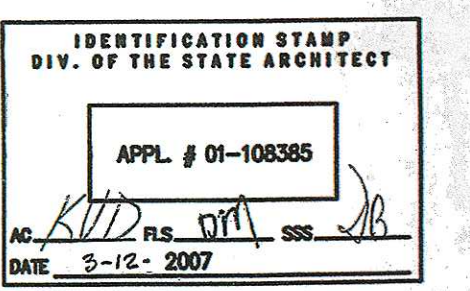
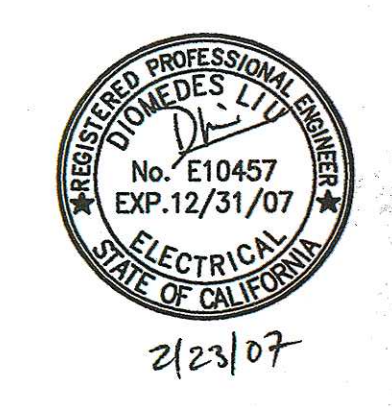
2x4's
A-1-3-9
2x A-2-8
2x2 A-3-4
A-6-1
A-4-1
D-1-5
2x2 D-1-3
116 Total

carbon units
15

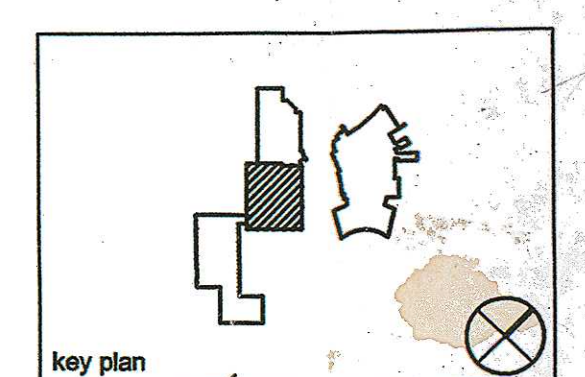
1,5-9
8,10,12

(5)-F-1

AS-BUILT



REV.	DATE	DESCRIPTION
02.27.07		DSA BACK CHECK
11.02.06		DSA SUBMITTAL
10.13.06		75% CD
09.12.06		40% PROGRESS
rev.	date	issue



key plan
2nd FLOOR LITS
STEINBERG ARCHITECTS

PROJECT NO: 06015 DATE: 02.27.07
DRAWN BY: MAMP CHECKED BY: VB
SCALE: 1/8" = 1'-0" 1 1 1 1

SECOND FLOOR PLAN

E2.02

8-EM LITS ADDE

ask 4/w m/c 3 way SW
in Rm 7203 } for Em Lighting
7213