



San Mateo County

Community College District

Capital Improvement Program Update

March 11-12, 2003





San Mateo County

Community College District

Agenda

- Welcome
- Program Overview
- Project Overviews: Cañada, College of San Mateo, Skyline
- Program Manager Roles & Responsibilities (Swinerton)
- Project Labor Agreement
- General Contractor Prequalification
- Design Build
- Total Cost of Ownership
- Question and Answer



San Mateo County

Community College District

Institutional History

- College of San Mateo - 1963
- Cañada - 1968
- Skyline - 1969
- District - 1978

- Facilities service life - 25 to 30 years
- Pedagogical Methodologies
- Population & Student Changes

Demographics

Fall '02

	Campus Acreage	Gross Square Feet	Assignable Square Footage	Buildings	Parking	Student Headcount	Student FTES	Full-Time Faculty & Staff
Cañada	132	246,431*	156,268	10 (4 portables)	1,700	6,727	4,193	156
CSM	154	566,521*	377,687	34	4,230	12,579	9,393	357
Skyline	125	333,162*	234,106	13 (6 portables)	1,636	9,594	7,788	251
Chancellor's Office	N/A	25,709	15,352	1 (1 portable)	Incl. in CSM	0	0	153
TOTAL	411	1,171,823	786,413	58 (11 portables)	7,566	28,900	21,374	917

* 3 Offsite Centers



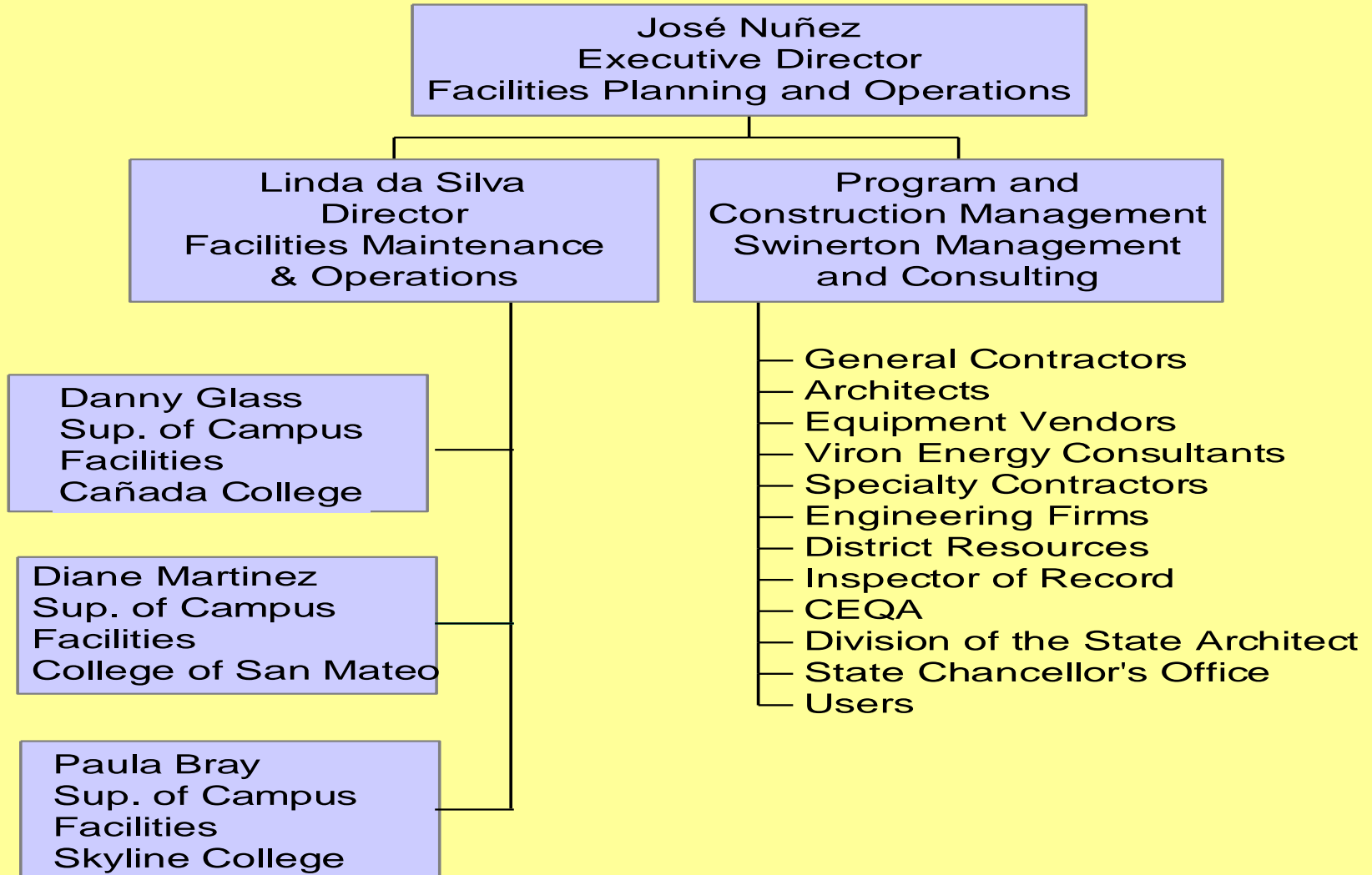
San Mateo County

Community College District

Program Overview

- Facility Audit
- Educational Facilities Master Plan
- Comprehensive Energy Analysis
- Facilities Project List
- Bond Funds Passed in 2001 & 2002
 - San Mateo County, Bond Measure C
 - State of California, Prop. 47 Bond Measure
- Strategic Planning
 - Consultant Selection
 - Budget
 - Schedule
 - Scope Development

Capital Improvement Program Team





San Mateo County

Community College District

Capital Improvement Program Funding Sources

- Bond Measure C (\$207M)
- Grants/Donations (\$700K+/-)
- Student Union Fees (Skyline) (\$70K+/-)
- State Capital Outlay Program (\$51.2M+/-)
- State Funded Scheduled Maintenance Program (1:1)
- State Funded Hazardous Substance Removal Program (1:0)
- Redevelopment (\$15M+/-)
- Surplus Property (\$10M)



San Mateo County

Community College District

Bond Oversight Committee Members

- **Mr. Jim Wyatt -- Committee Chairman**
- **Ms. Marion McDowell -- Committee Vice Chair**
- **Ms. Marta Bookbinder -- Member**
- **Mr. Coleman Campbell -- Member**
- **Mr. George Cresson -- Member**
- **Mr. Ronald Fick -- Member**
- **Ms. Rose Jacobs Gibson -- Member**
- **Mr. Stanley Gross -- Member**
- **Mr. Hien Kieu -- Member**
- **Mr. Bill Nack -- Member**
- **Ms. Ruth Nagler -- Member**

Instructional Facility, Bldg. 22

Building 17 Modernization

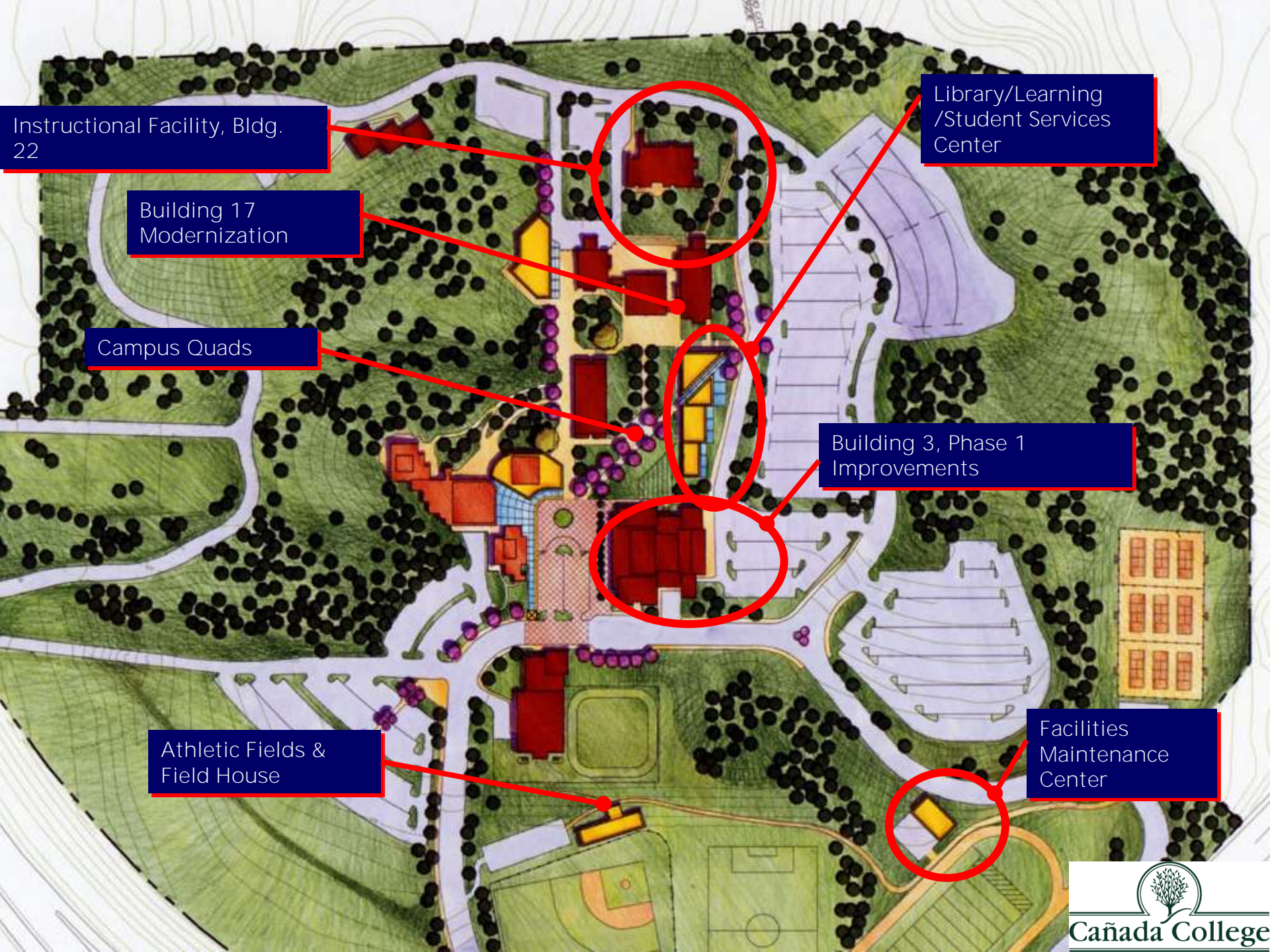
Library/Learning /Student Services Center

Campus Quads

Building 3, Phase 1 Improvements

Athletic Fields & Field House

Facilities Maintenance Center



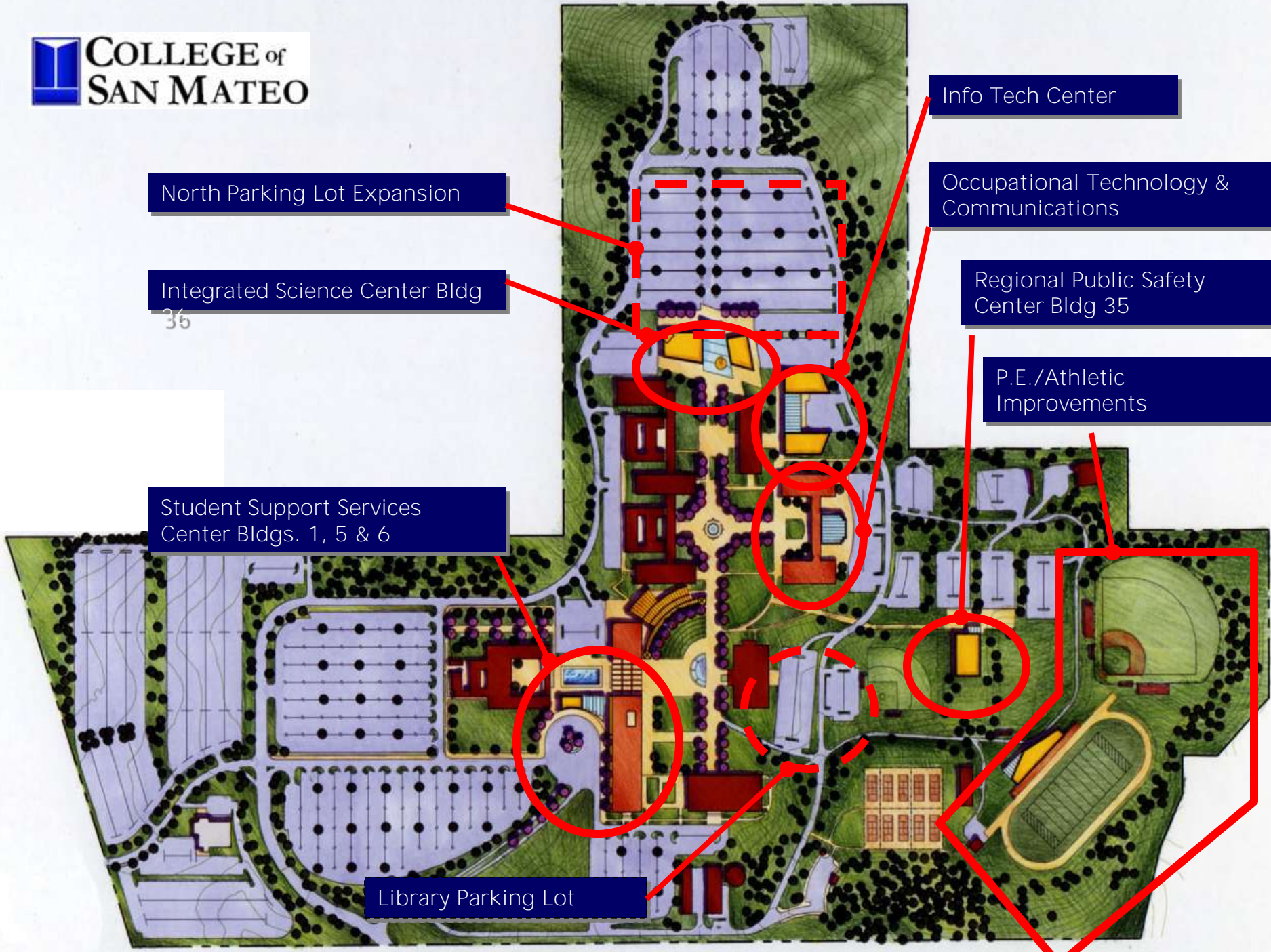


San Mateo County

Community College District

Cañada College Project Highlights

- Learning Resource Center/Student Services
 - \$19 million, 60,000 gsf
- Building 3, Phase 1 Improvements
 - \$1.4 million, 63,000 gsf
- Building 22
 - \$4 million, 10,000 gsf
- Building 17 Modernization
 - \$1 million, 12,000 gsf
- Swing Space
 - \$2 million



North Parking Lot Expansion

Integrated Science Center Bldg
36

Student Support Services
Center Bldgs. 1, 5 & 6

Library Parking Lot

Info Tech Center

Occupational Technology &
Communications

Regional Public Safety
Center Bldg 35

P.E./Athletic
Improvements

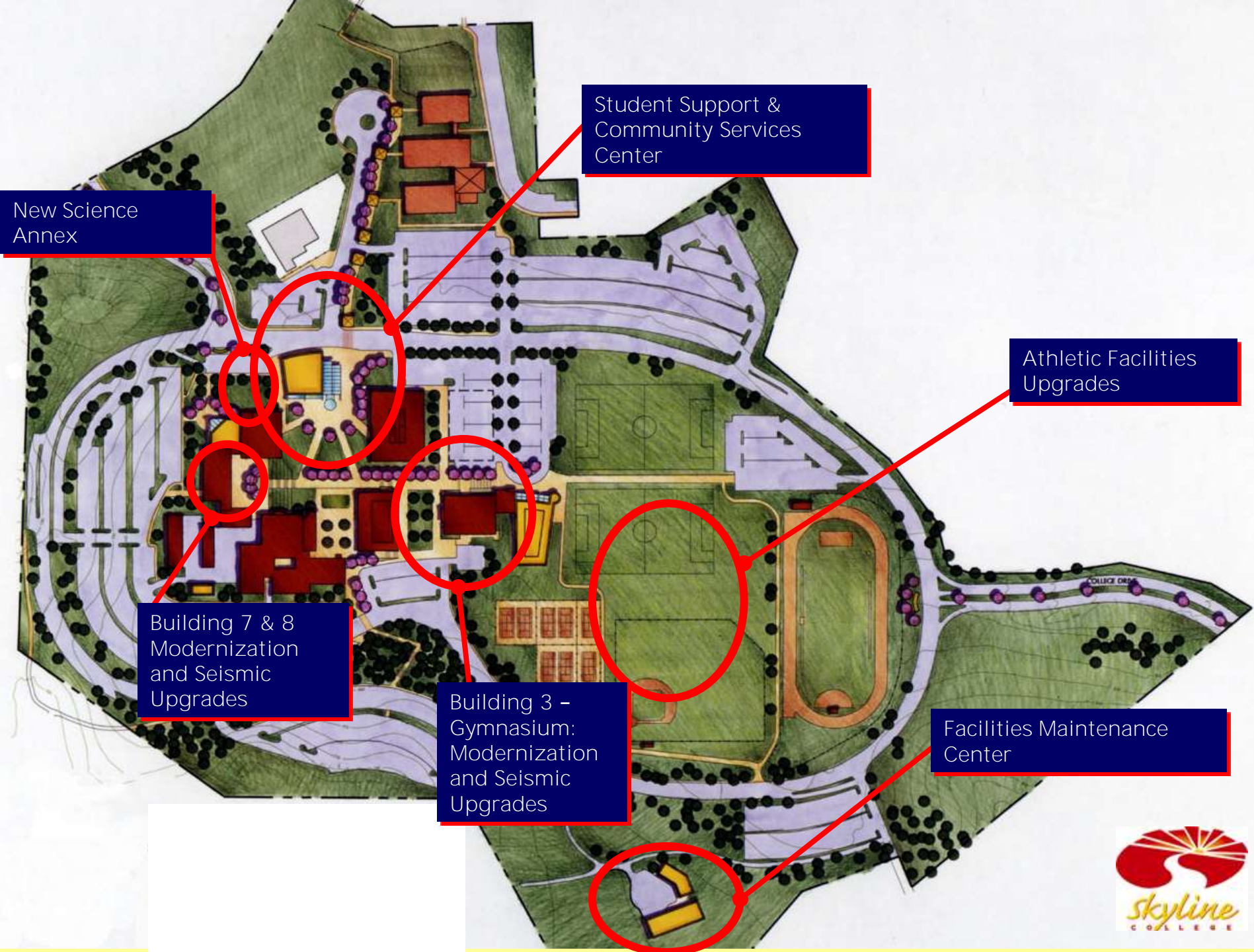


San Mateo County

Community College District

College of San Mateo Project Highlights

- Integrated Science Center – Bldg 36
 - \$22.6 million, 65,000 gsf
- Regional Public Safety Center – Bldg 35
 - \$2.2 million, 11,000 gsf
- Building 18, Seismic Upgrade and Modernization
 - \$3.0 million, 27,000 gsf
- Building 17 Modernization
 - \$500k, 15,000 gsf
- Building 1, 5 and 6 Modernization
 - \$12 million, 86,000 gsf
- Building 6 Seismic Upgrade
 - \$4 million, 10,000 gsf
- Swing Space
 - \$2 million



Student Support & Community Services Center

New Science Annex

Athletic Facilities Upgrades

Building 7 & 8 Modernization and Seismic Upgrades

Building 3 - Gymnasium: Modernization and Seismic Upgrades

Facilities Maintenance Center





San Mateo County

Community College District

Skyline College Project Highlights

- Student Union/Science Annex
 - \$23.6 million, 75,000 gsf
- Building 3, Seismic Upgrade and Modernization
 - \$5 million, 41,000 gsf
- Building 7 and 8 Seismic Upgrade and Modernization
 - \$12 million, 84,000 gsf
- Facilities Maintenance Center
 - \$3.5 million, 11,000 gsf
- Swing Space
 - \$2 million



San Mateo County

Community College District

District Wide Improvements

- Fire Alarm Improvements
 - \$1.9 million
- Athletic Facilities
 - \$12 million
- Infrastructure Upgrades (utilities, roads, parking lots, lighting, communications)
 - Program Definition
- Energy Efficiency Improvements
 - \$16 million



San Mateo County

Community College District

Swinerton Roles & Responsibilities

- Program Definition
- Design Management
- Construction Procurement
- Construction Management
- Budget Management
- Logistics/Safety
- Capital Improvements Program - Communications



San Mateo County

Community College District

Project Labor Agreement

- Board Resolution
- Prevailing Wage
- Qualified Craftspeople
- Apprenticeship Programs
- Limit Labor Disruptions
- Minimize Interferences
- Timely Completion of Work



San Mateo County

Community College District

General Contractor Prequalification

- For All Major Projects
- Mandatory Requirements
- Comparable Project Experience
- Project Specific
- Groups of Comparable Projects
- Cañada College, Building 3
- Upcoming Small Projects



San Mateo County

Community College District

Design Build

- AB 1000 / GC 5956
- Single point of responsibility for design and construction
- Project delivery time is reduced
- Enforceable price for construction early in the project
- Four Major Projects
- Prequalification of DB Teams – Spring 2003



San Mateo County

Community College District

Total Cost of Ownership

(An Additional 226,000 gsf)

- Existing Facilities 1,200,000 gsf
- New Facilities
 - Cañada Bldg 22 ~ 10,000 gsf
 - Cañada Bldg 9 Library/LRC ~ 60,000 gsf
 - CSM Science Center ~ 65,000 gsf
 - CSM RPSC ~ 11,000 gsf
 - Skyline Student Union ~ 75,000 gsf
 - Skyline Pacific Heights/Loma Chica ~ 40,000 gsf
- Demolished Facilities
 - CSM 25 - 29 ~ 35,000 gsf



San Mateo County

Community College District

Q&A

Website: www.smccd.net

