

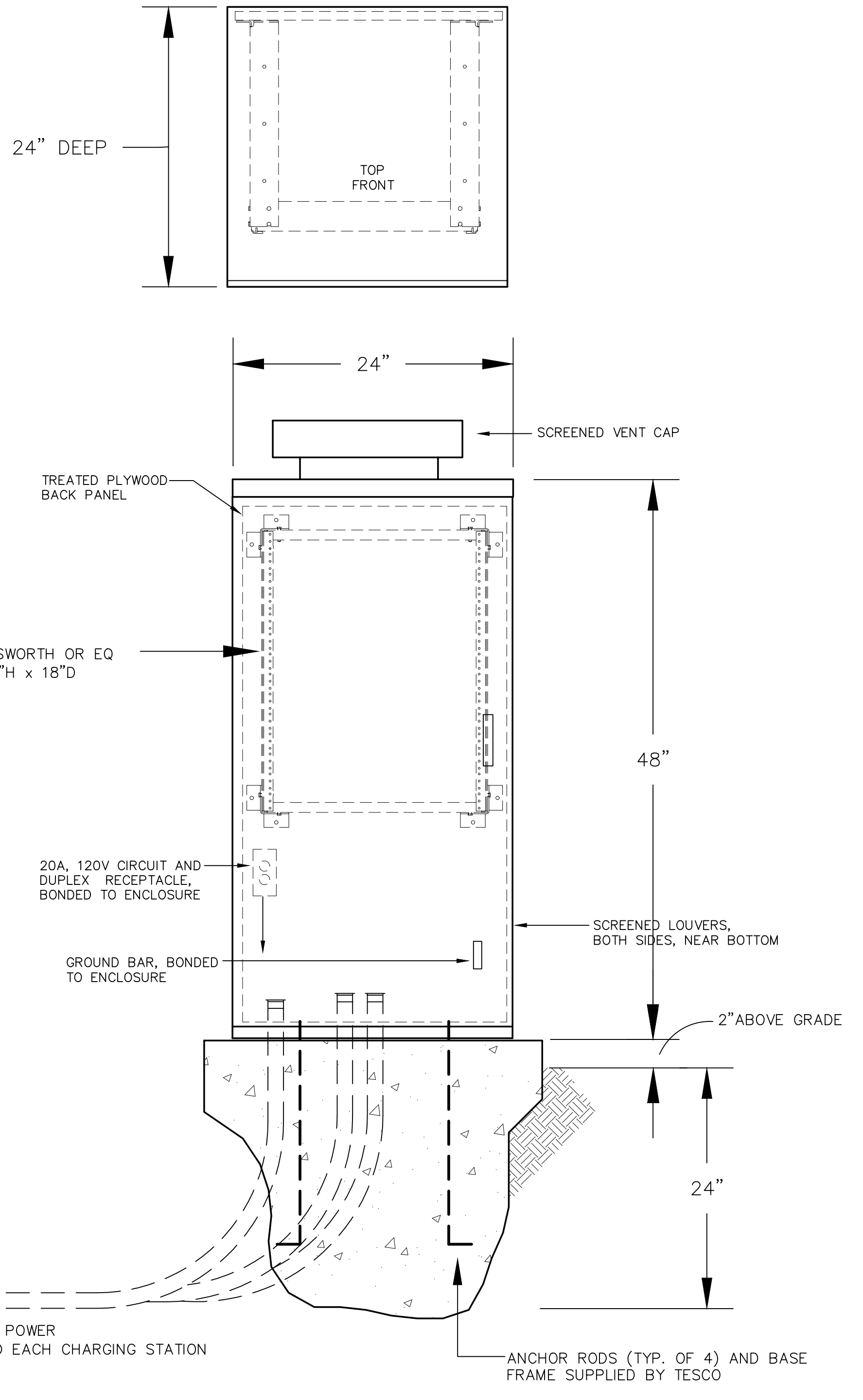
SKYLINE CHARGING STATIONS FOR ELECTRIC VEHICLES

JEFF SULTAN, P.E. ELECTRICAL ENGINEER  
 2081 Camino de los Robles  
 Menlo Park, CA 94025  
 (650) 854-7585  
 jeff@jmspower.net



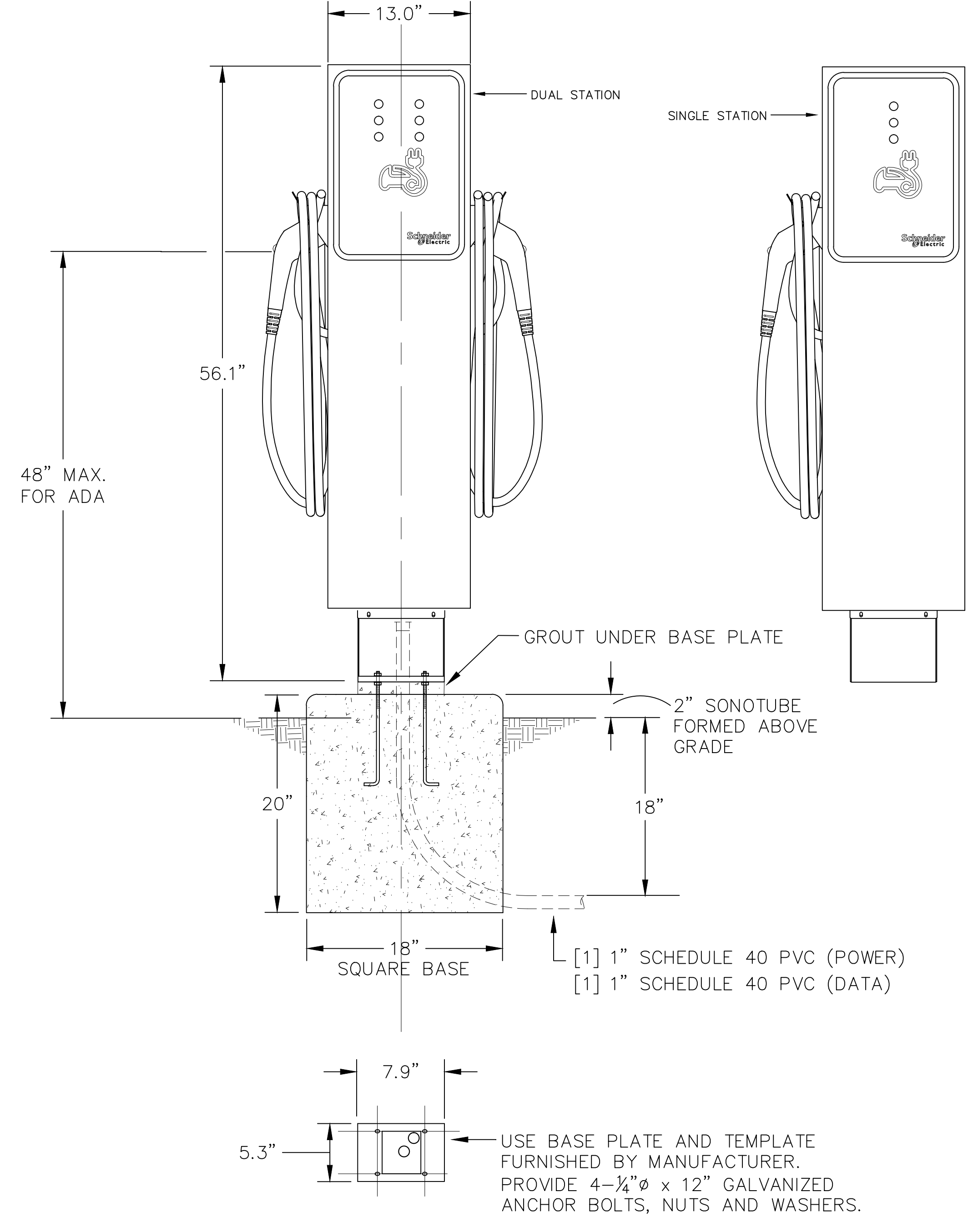
GENERAL NOTES:

- PERFORM ALL WORK ACCORDING TO 2008 CALIFORNIA ELECTRIC CODE (CEC). COORDINATE INSPECTIONS WITH DISTRICT INSPECTOR OF RECORD. DRAWINGS ARE DIAGRAMMATIC AND WORK IS SUBJECT TO APPROVAL BY INSPECTOR IN THE FIELD.
- LOCATIONS ARE APPROXIMATE. EXACT LOCATIONS FOR CHARGING STATIONS WILL BE MARKED IN THE FIELD.
- ALL MATERIAL SHALL BE NEW, U.L. LISTED AND INSTALLED ACCORDING TO LISTING REQUIREMENTS.
- MATERIALS:  
 CIRCUIT: 2-#6 +2-#8 +#6GR, THWN COPPER.  
 RACEWAY: PVC SCHEDULE 40 UNDERGROUND, RSW OUTDOORS WHERE EXPOSED, EMT INDOORS.  
 TERMINATE ALL CONDUITS WITH BUSHING OR ENDBELL. INSTALL (N) UNDERGROUND CONDUITS ACCORDING TO DETAIL 4.
- UPDATE PANEL SCHEDULE AND LABEL (N) EQUIPMENT WITH PANEL LOCATION, DESIGNATION, AND AND CIRCUIT
- INSTALLATION DETAILS ARE FOR SCHNEIDER EV LINK #EV230PDR. EQUIPMENT FROM OTHER MANUFACTURERS IS NOT THE SAME. FOLLOW MANUFACTURER'S INSTRUCTIONS.
- CHARGING STATIONS FURNISHED BY THE DISTRICT. PROVIDE ALL OTHER MATERIALS AND ALL LABOR FOR A COMPLETE INSTALLATION.
- PROVIDE (N) CIRCUIT BREAKERS AS SHOWN. MATCH (E) STYLE AND A.I.C. RATING. DO NOT PROVIDE GFI TYPE CIRCUIT BREAKERS; GFI PROTECTION IS INTEGRAL TO CHARGING STATION.

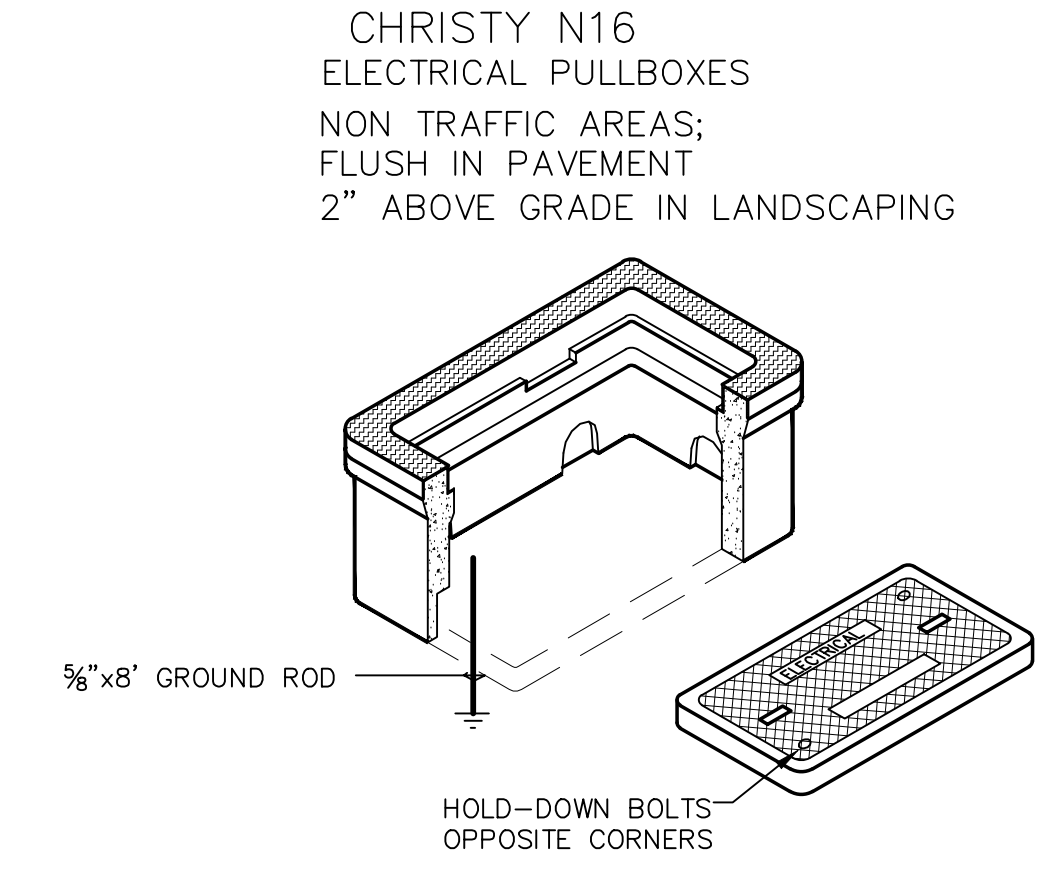


1 IT PEDESTAL  
 N.T.S.

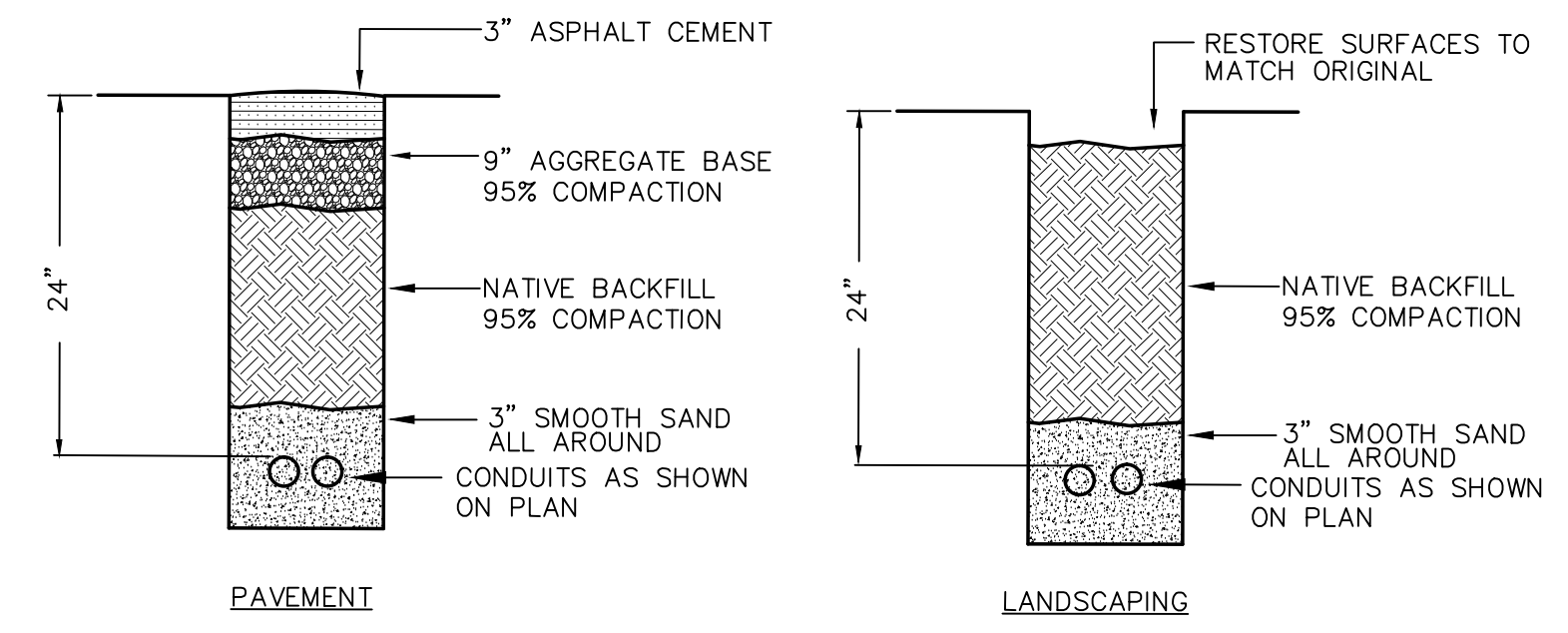
COLOR: TESCO STANDARD BEIGE  
 NEMA 3R VENTILATED PEDESTAL ENCLOSURE  
 TESCO CONTROLS, INC. SACRAMENTO, CA (916) 429-2817



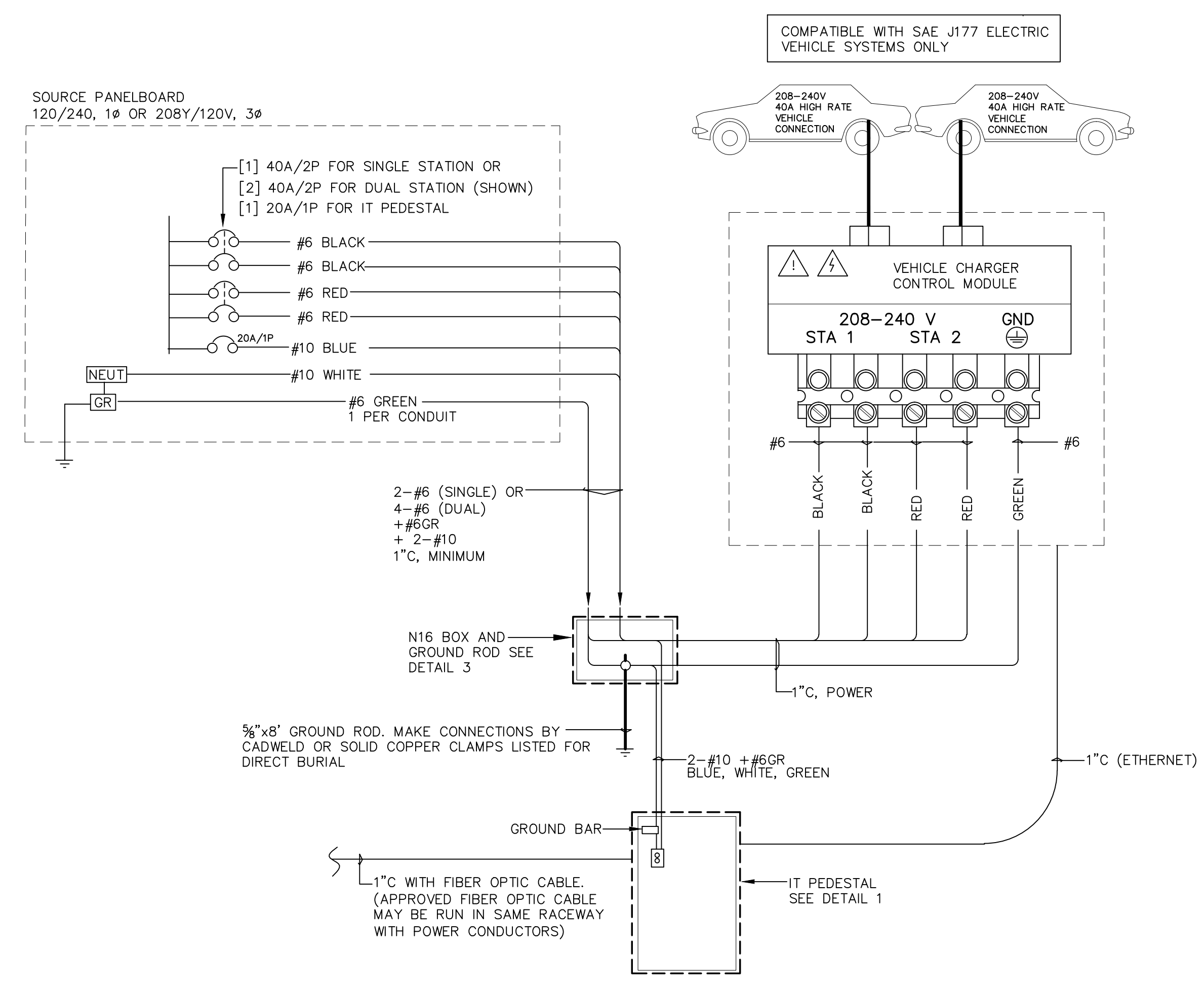
2 CHARGING STATION INSTALLATION  
 N.T.S.



3 TYPICAL SUBSURFACE PULLBOX  
 N.T.S.



4 TYPICAL TRENCH SECTIONS  
 N.T.S.



5 CHARGING STATION WIRING  
 N.T.S.

SHEET TITLE  
 ELECTRICAL PLAN AND DETAILS

REVISIONS

NO.	DATE	DESCRIPTION

DATE: MARCH 4, 2013  
 DRAWN: JS  
 CHECKED: -  
 SCALE: AS NOTED  
 JOB NO.:

SHEET NUMBER  
 SKY E1