

**GENERAL NOTES:**  
 1) PROVIDE 1/2" CONDUIT FROM DOOR SERVICES TO JUNCTION BOXES.  
 2) PROVIDE 1" CONDUIT FROM JUNCTION BOXES TO ACCESSIBLE CEILING SPACE.

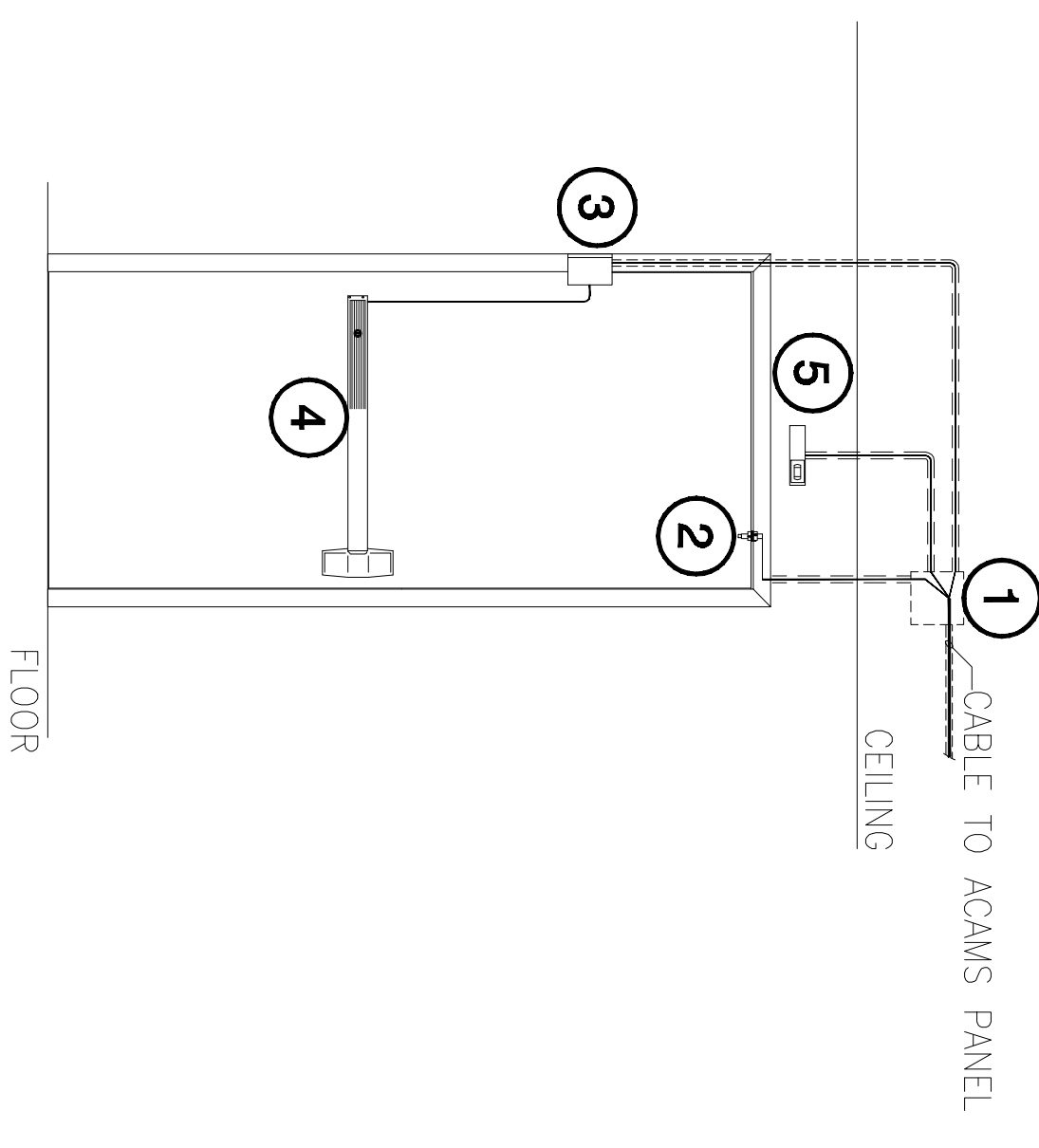
**NETVERSANT**  
*Inspiring Technology Solutions*

NO.	DESCRIPTION	DATE
1	ISSUE/REVISIONS	
2	10% SCHEDULED REVIEW SUBMITTAL	02/08/18
3	30% DESIGN DEVELOPMENT SUBMITTAL	02/28/18
4	10% DESIGN DEVELOPMENT SUBMITTAL	02/28/18
5	5% DESIGN DEVELOPMENT SUBMITTAL	02/28/18
6	CONCEPT DESIGN REVIEW	01/18/18
7	CONCEPT DESIGN REVIEW	01/18/18
8	CONCEPT DESIGN REVIEW	01/18/18
9	CONCEPT DESIGN REVIEW	01/18/18
10	CONCEPT DESIGN REVIEW	02/08/18
11	CONCEPT DESIGN REVIEW	02/18/18
12	CONCEPT DESIGN REVIEW	02/28/18
13	CONCEPT DESIGN REVIEW	02/28/18

**PROJECT RECORD SET**

PROJECT NO.	0707200	DRAWN BY:	ML
DATE	07/20/11	CHECKED BY:	CMCS
SCALE	AS NOTED		
SHEET TITLE			

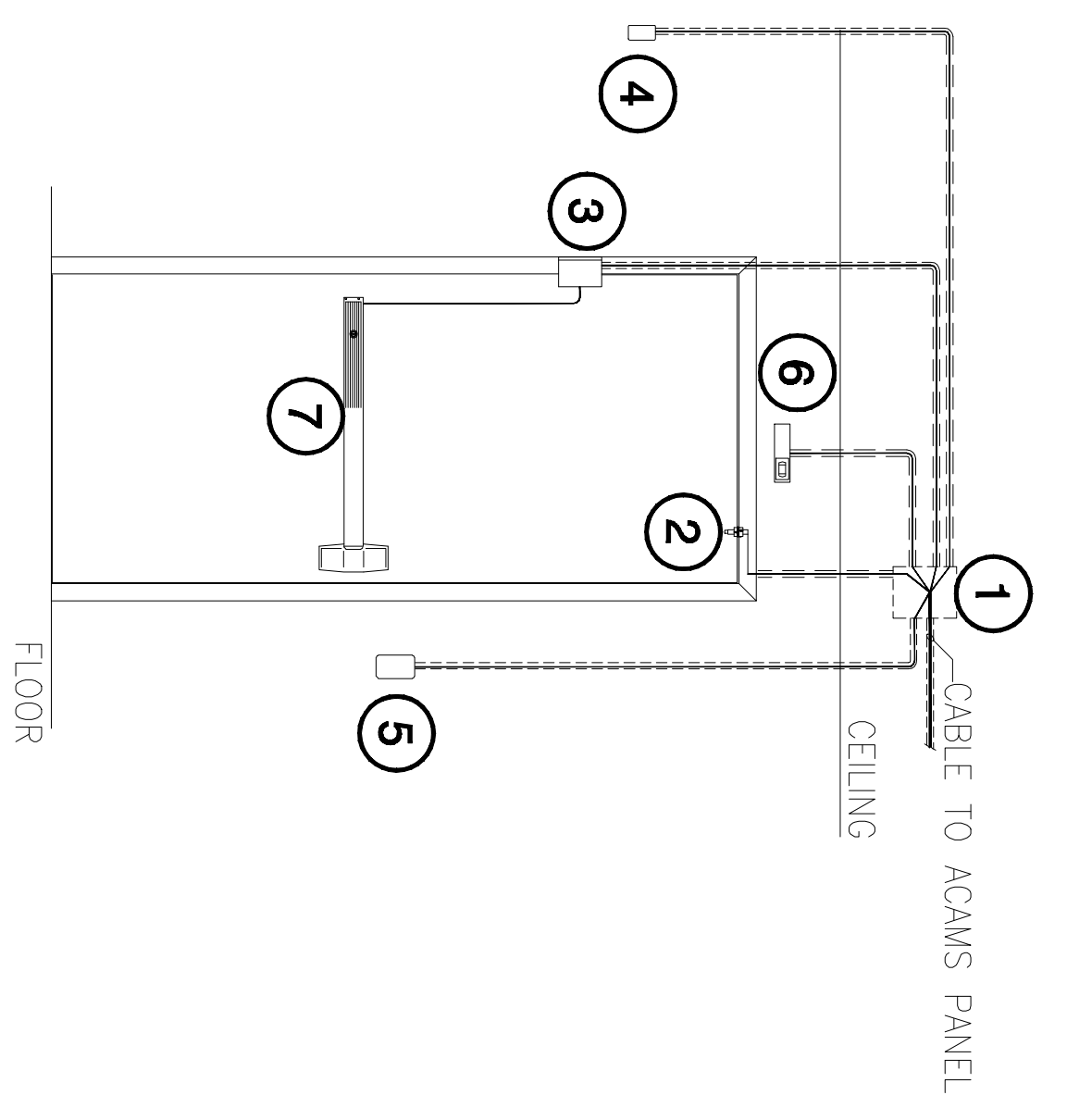
**ACAMS DOOR DETAILS**



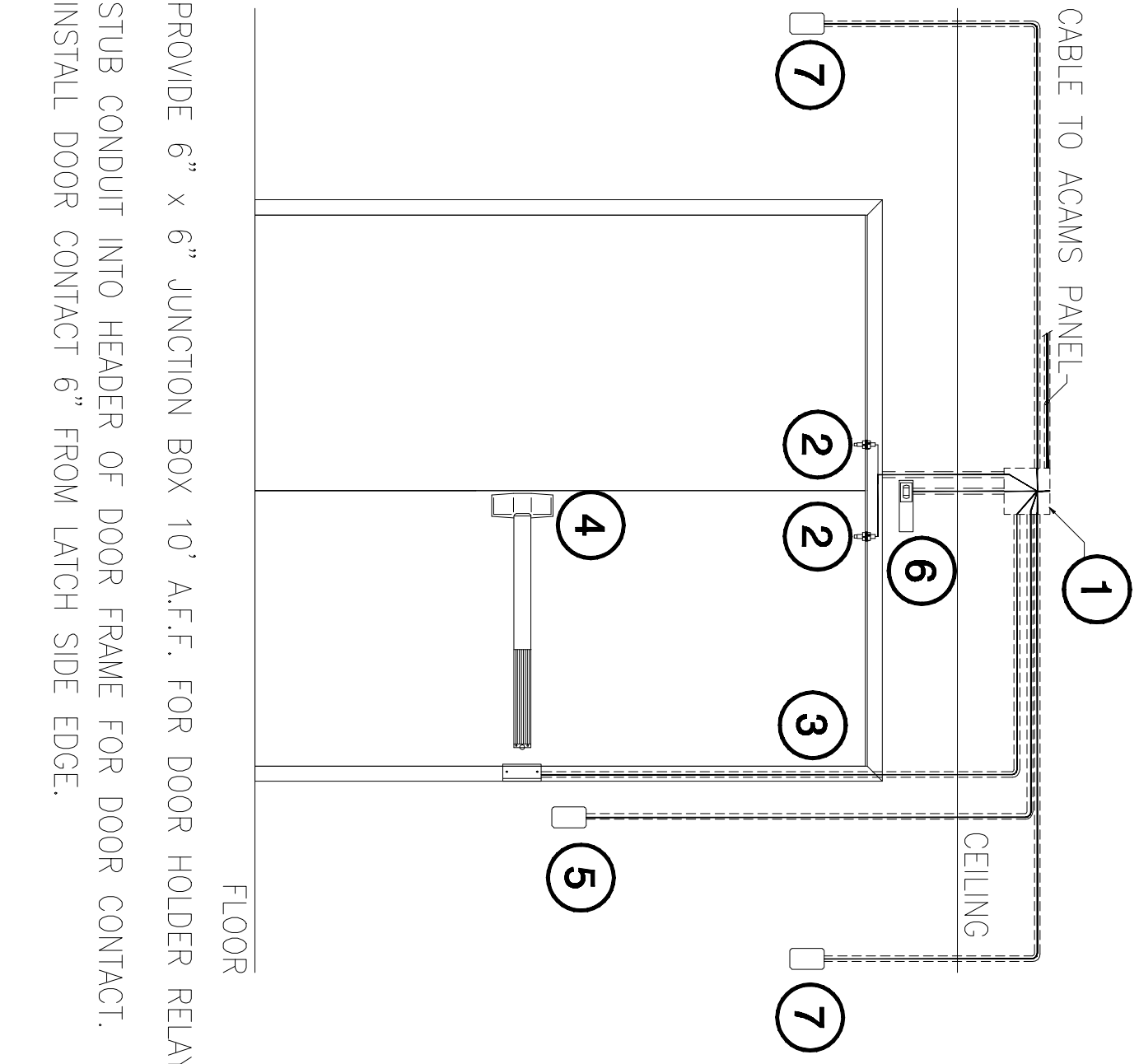
- 1 PROVIDE JUNCTION BOX 10" A.F.F.
- 2 STUB CONDUIT INTO HEADER OF DOOR FRAME FOR DOOR CONTACT. INSTALL DOOR CONTACT 6" FROM HANDLE SIDE EDGE.
- 3 STUB CONDUIT DOWN DOOR FRAME FOR ELECTRIC POWER TRANSFER.
- 4 ELECTRIFIED PANIC BAR.
- 5 REQUEST TO EXIT MOTION SENSOR.

THIS DOOR IS UNLOCKED DURING SCHOOL HOURS AND THE DOOR CONTACTS ALARMING FUNCTION IS DISABLED. AFTER HOURS THE DOOR IS LOCKED FROM THE OUTSIDE AND THE DOOR CONTACT IS ENABLED. THE REQUEST TO EXIT SHALL SERVE TO GRANT EGRESS AFTER HOURS.

**D SCHEDULED UNLOCK DOOR, 1488, 170B, 180B**  
 SCALE: N.T.S.



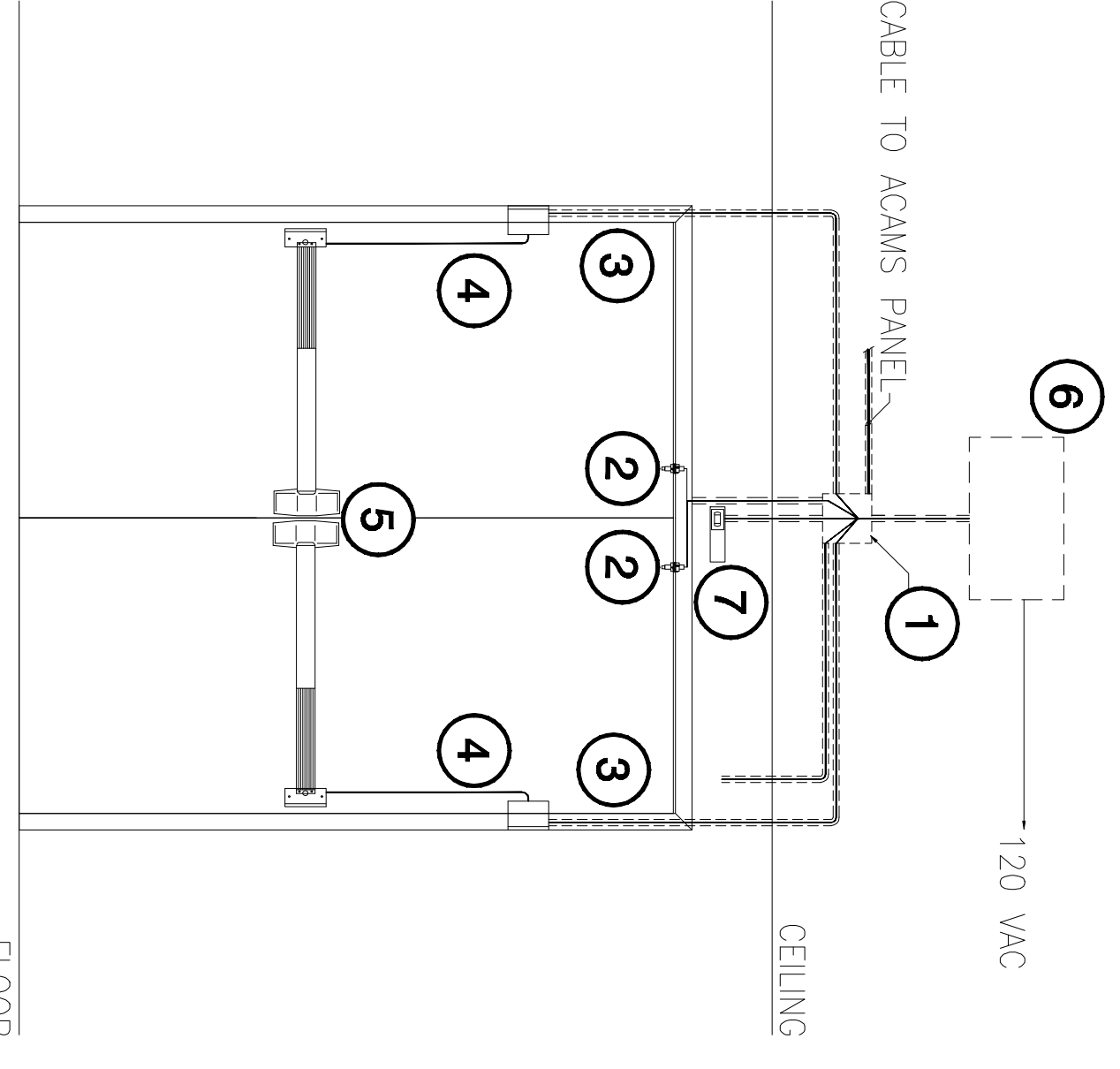
- 1 PROVIDE 6" x 6" JUNCTION BOX 10" A.F.F. FOR DOOR HOLDER RELAY.
- 2 STUB CONDUIT INTO HEADER OF DOOR FRAME FOR DOOR CONTACT. INSTALL DOOR CONTACT 6" FROM HANDLE SIDE EDGE.
- 3 STUB CONDUIT DOWN DOOR FRAME FOR ELECTRIC POWER TRANSFER.
- 4 PROVIDE 4" x 4" x 2 1/8" DEEP BOX WITH SINGLE GANG DEVICE RING FLUSH MOUNTED FOR MAGNETIC DOOR HOLDER. MOUNT AT APPROX. 28" FROM EDGE OF DOOR FRAME AND 7/8" A.F.F. SO THE ARMATURE WILL RESIDE 6" BELOW TOP AND SIDE EDGES OF DOOR LEAF.
- 5 PROVIDE 4" x 4" x 2 1/8" DEEP BOX WITH SINGLE GANG DEVICE RING FLUSH MOUNTED FOR CARD READER 42" A.F.F. O.C.
- 6 REQUEST TO EXIT MOTION SENSOR.
- 7 ELECTRIFIED PANIC BAR.



- 1 PROVIDE 6" x 6" JUNCTION BOX 10" A.F.F. FOR DOOR HOLDER RELAY.
- 2 STUB CONDUIT INTO HEADER OF DOOR FRAME FOR DOOR CONTACT. INSTALL DOOR CONTACT 6" FROM LATCH SIDE EDGE.
- 3 STUB CONDUIT DOWN DOOR FRAME FOR POWER TRANSFER HINGE.
- 4 ELECTRIFIED PANIC BAR.
- 5 PROVIDE 4" x 4" x 2 1/8" DEEP BOX WITH SINGLE GANG DEVICE RING FLUSH MOUNTED FOR CARD READER 42" A.F.F. O.C.
- 6 REQUEST TO EXIT MOTION SENSOR.
- 7 PROVIDE 4" x 4" x 2 1/8" DEEP BOX WITH SINGLE GANG DEVICE RING FLUSH MOUNTED FOR MAGNETIC DOOR HOLDER. MOUNT AT APPROX. 28" FROM EDGE OF DOOR FRAME AND 7/8" A.F.F. SO THE ARMATURE WILL RESIDE 6" BELOW TOP AND SIDE EDGES OF DOOR LEAF.

A CARD OR KEYFOB MUST ALWAYS BE USED TO UNLOCK THIS DOOR.

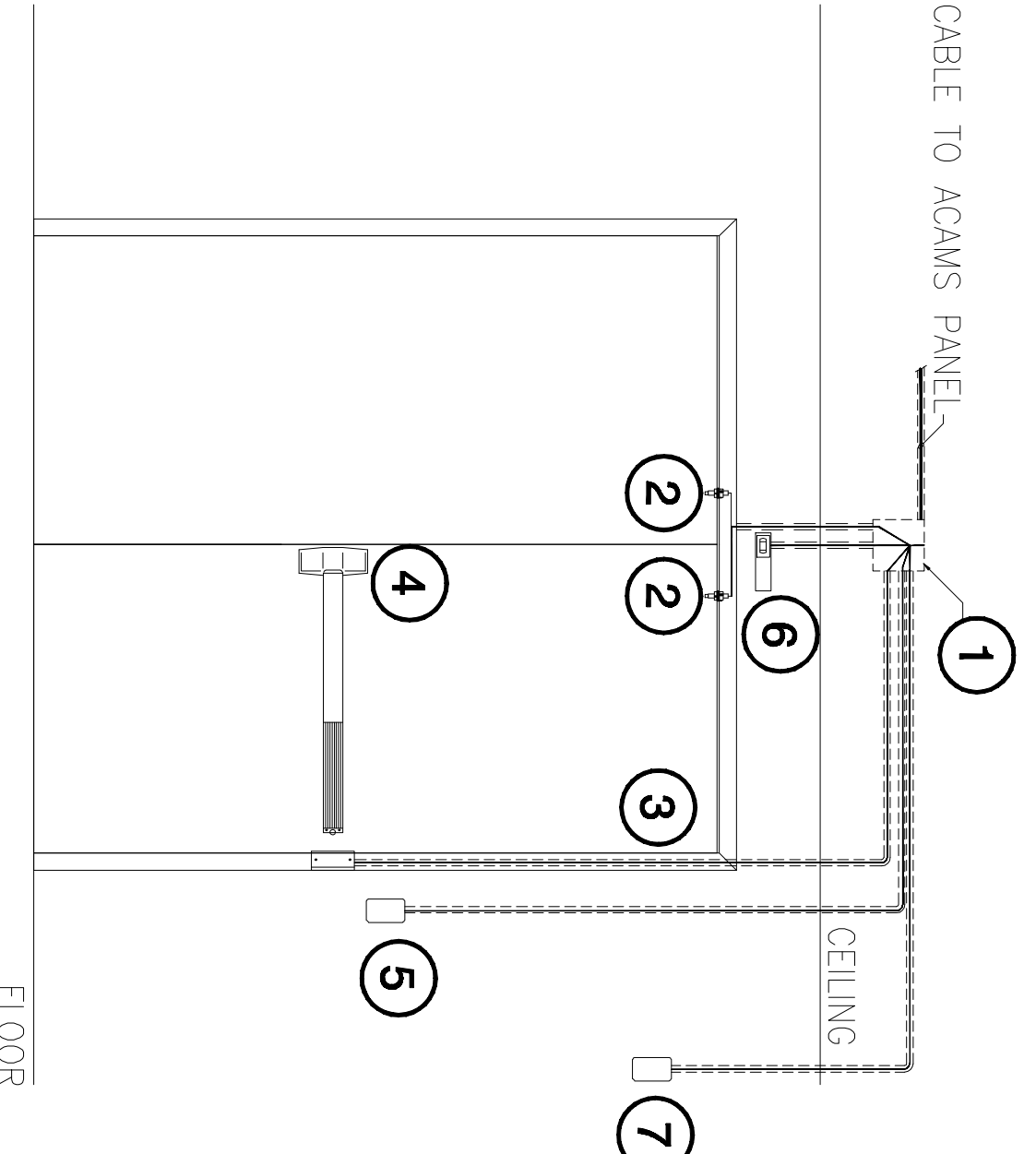
**C CARD READER DOOR, 170A, 180A**  
 SCALE: N.T.S.



- 1 JUNCTION BOX 10" A.F.F.
- 2 STUB CONDUIT INTO HEADER OF DOOR FRAME FOR DOOR CONTACT. INSTALL DOOR CONTACT 6" FROM LATCH SIDE EDGE.
- 3 STUB CONDUIT DOWN DOOR FRAME FOR ELECTRIC POWER TRANSFER.
- 4 WIREWAY THROUGH DOOR FROM POWER TRANSFER TO ELECTRIFIED PANIC BAR.
- 5 ELECTRIFIED PANIC BARS.
- 6 PROVIDE 4" x 4" x 2 1/8" DEEP BOXES WITH SINGLE GANG DEVICE RINGS FLUSH MOUNTED FOR ADA ACTIVATIONS 37.5" A.F.F. O.C.
- 7 REQUEST TO EXIT MOTION SENSOR.
- 8 DOOR OPERATOR.
- 9 PS-873-2-A0
- 10 PROVIDE 4" x 4" x 2 1/8" DEEP BOXES WITH SINGLE GANG DEVICE RINGS FLUSH MOUNTED FOR CARD READER 30" A.F.F. O.C.

THIS DOOR IS UNLOCKED DURING SCHOOL HOURS AND THE DOOR CONTACTS ALARMING FUNCTION IS DISABLED. AFTER HOURS THE DOOR IS LOCKED FROM THE OUTSIDE AND THE DOOR CONTACT IS ENABLED. THE REQUEST TO EXIT SWITCH IN THE LOCKSET SHALL SERVE TO GRANT EGRESS AFTER HOURS.

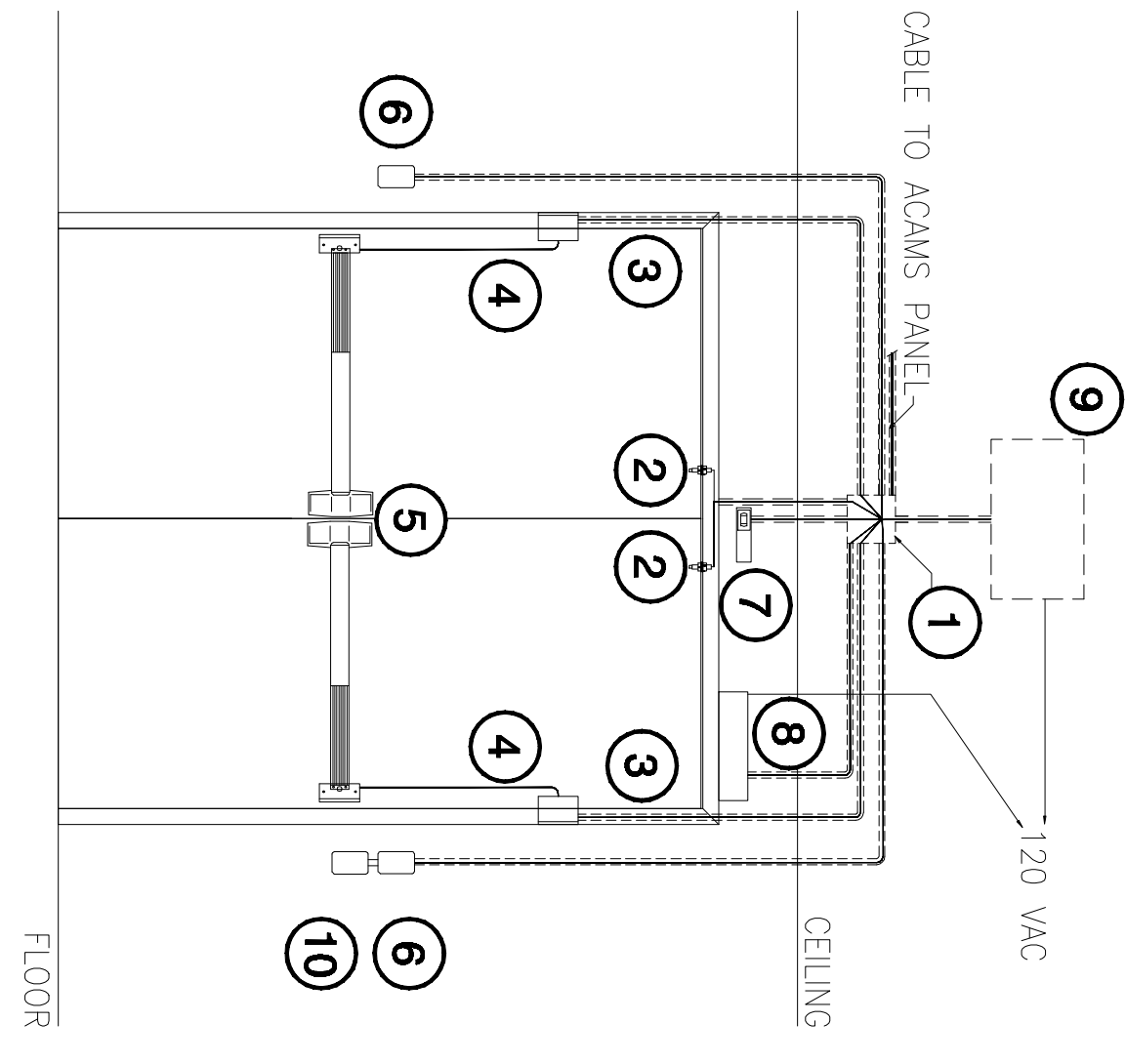
**G SCHEDULED UNLOCK DOOR, 240E, 301B**  
 SCALE: N.T.S.



- 1 PROVIDE 6" x 6" JUNCTION BOX 10" A.F.F. FOR DOOR HOLDER RELAY.
- 2 STUB CONDUIT INTO HEADER OF DOOR FRAME FOR DOOR CONTACT. INSTALL DOOR CONTACT 6" FROM LATCH SIDE EDGE.
- 3 STUB CONDUIT DOWN DOOR FRAME FOR POWER TRANSFER HINGE.
- 4 ELECTRIFIED PANIC BAR.
- 5 PROVIDE 4" x 4" x 2 1/8" DEEP BOX WITH SINGLE GANG DEVICE RINGS FLUSH MOUNTED FOR CARD READER 42" A.F.F. O.C.
- 6 REQUEST TO EXIT MOTION SENSOR.
- 7 PROVIDE 4" x 4" x 2 1/8" DEEP BOX WITH SINGLE GANG DEVICE RING FLUSH MOUNTED FOR MAGNETIC DOOR HOLDER. MOUNT AT APPROX. 28" FROM TOP AND SIDE EDGES OF DOOR LEAF.

A CARD OR KEYFOB MUST ALWAYS BE USED TO UNLOCK THIS DOOR.

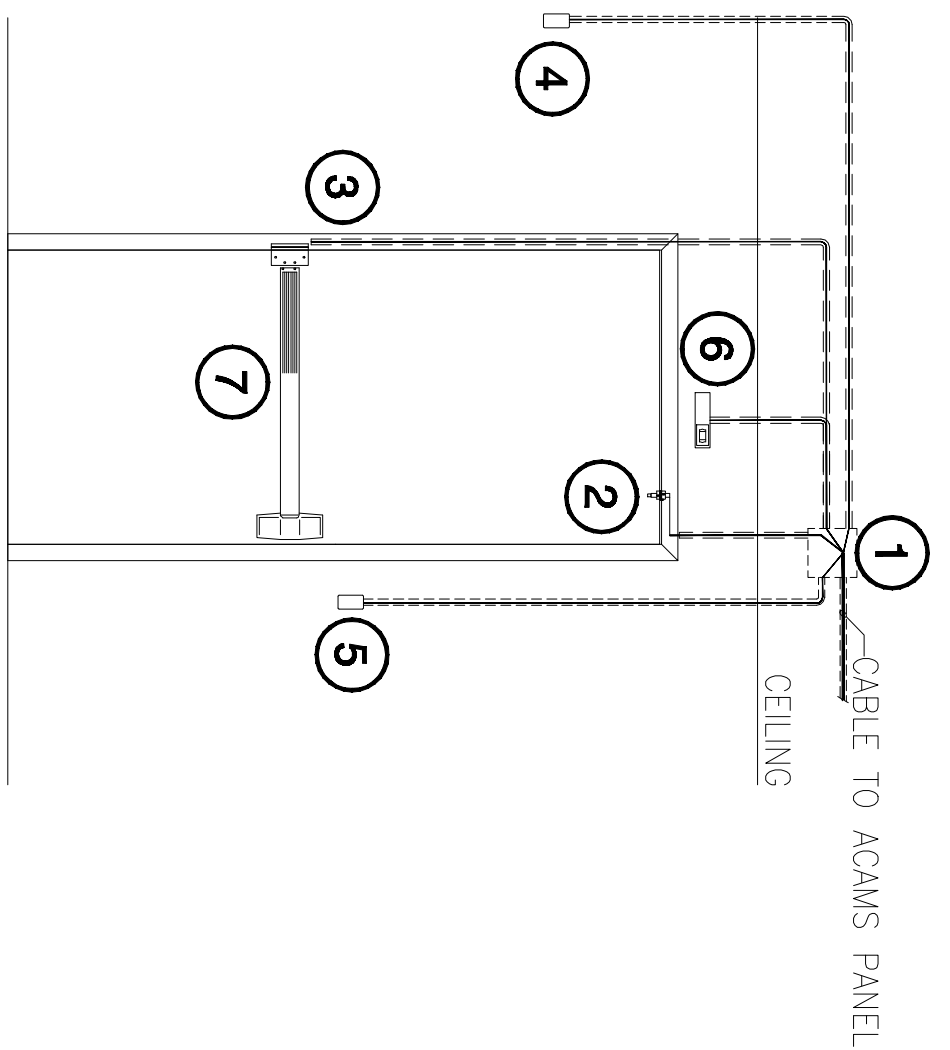
**B CARD READER DOOR, 148A**  
 SCALE: N.T.S.



- 1 JUNCTION BOX 10" A.F.F.
- 2 STUB CONDUIT INTO HEADER OF DOOR FRAME FOR DOOR CONTACT. INSTALL DOOR CONTACT 6" FROM LATCH SIDE EDGE.
- 3 STUB CONDUIT DOWN DOOR FRAME FOR ELECTRIC POWER TRANSFER.
- 4 WIREWAY THROUGH DOOR FROM POWER TRANSFER TO ELECTRIFIED PANIC BAR.
- 5 ELECTRIFIED PANIC BARS.
- 6 PROVIDE 4" x 4" x 2 1/8" DEEP BOXES WITH SINGLE GANG DEVICE RINGS FLUSH MOUNTED FOR ADA ACTIVATIONS 37.5" A.F.F. O.C.
- 7 REQUEST TO EXIT MOTION SENSOR.
- 8 DOOR OPERATOR.
- 9 PS-873-2-A0
- 10 PROVIDE 4" x 4" x 2 1/8" DEEP BOXES WITH SINGLE GANG DEVICE RINGS FLUSH MOUNTED FOR CARD READER 30" A.F.F. O.C.

THIS DOOR IS UNLOCKED DURING SCHOOL HOURS. THE DOOR CONTACTS ALARMING FUNCTION IS DISABLED. ADA ACTUATOR WILL OPERATE THE OPENER. AFTER HOURS THE DOOR IS LOCKED FROM THE OUTSIDE AND THE DOOR CONTACT IS ENABLED. THE CARD READER ADA ACTIVATIONS AS WELL AS THE SENIOR ADA ACTUATOR OR REQUEST TO EXIT WILL GRANT EGRESS.

**F SCHEDULED UNLOCK DOOR, 193, 240A, 291, 293**  
 SCALE: N.T.S.



- 1 PROVIDE 6" x 6" JUNCTION BOX 10" A.F.F. FOR DOOR HOLDER RELAY.
- 2 STUB CONDUIT INTO HEADER OF DOOR FRAME FOR DOOR CONTACT. INSTALL DOOR CONTACT 6" FROM HANDLE SIDE EDGE.
- 3 STUB CONDUIT DOWN DOOR FRAME FOR POWER TRANSFER HINGE.
- 4 PROVIDE 4" x 4" x 2 1/8" DEEP BOX WITH SINGLE GANG DEVICE RING FLUSH MOUNT AT APPROX. 28" FROM EDGE OF DOOR FRAME AND 7/8" A.F.F. SO THE ARMATURE WILL RESIDE 6" BELOW TOP AND SIDE EDGES OF DOOR LEAF.
- 5 PROVIDE 4" x 4" x 2 1/8" DEEP BOX WITH SINGLE GANG DEVICE RING FLUSH MOUNTED FOR CARD READER 42" A.F.F. O.C.
- 6 REQUEST TO EXIT MOTION SENSOR.
- 7 ELECTRIFIED PANIC BAR.

A CARD OR KEYFOB MUST ALWAYS BE USED TO UNLOCK THIS DOOR.

**A CARD READER DOOR, 301A, ST06C**  
 SCALE: N.T.S.

- 1 JUNCTION BOX 10" A.F.F.
- 2 STUB CONDUIT INTO HEADER OF DOOR FRAME FOR DOOR CONTACT. INSTALL DOOR CONTACT 6" FROM LATCH SIDE EDGE.
- 3 STUB CONDUIT DOWN DOOR FRAME FOR ELECTRIC POWER TRANSFER.
- 4 WIREWAY THROUGH DOOR FROM POWER TRANSFER TO ELECTRIFIED PANIC BAR.
- 5 ELECTRIFIED PANIC BARS.
- 6 MULLION CARD READER MOUNTED ON DOOR FRAME AT 42" A.F.F.
- 7 REQUEST TO EXIT MOTION SENSOR.
- 8 DOOR OPERATOR.
- 9 PS-873-2-A0

A CARD OR KEYFOB MUST ALWAYS BE USED TO UNLOCK THIS DOOR.

**E CARD READER DOOR, 191, 194**  
 SCALE: N.T.S.

All drawings and other materials prepared by or for the architect are the property of the architect and shall remain confidential. No part of these drawings may be reproduced or transmitted in any form or by any means, electronic, mechanical, photocopying, recording, or by any information storage and retrieval system, without the prior written permission of the architect.