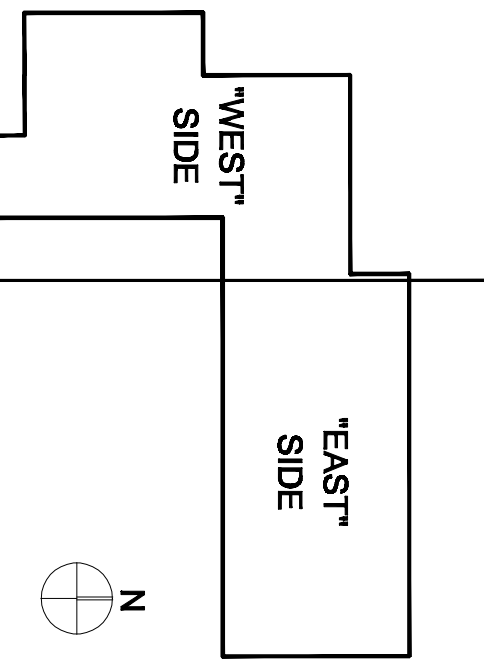


NETVERSANT
Inspiring Technology Solutions

NO.	REVISION/ISSUES	DATE
1	10% SCHEMATIC DESIGN SUBMITTAL	04/28/08
2	30% DESIGN DEVELOPMENT SUBMITTAL	06/25/08
3	100% DESIGN DEVELOPMENT SUBMITTAL	07/29/08
4	SET DEVELOPMENT EVALUATION	08/28/08
5	PERMITS DEVELOPMENT REVIEW	10/08/08
6	CONSTRUCTION & DEMO PHASES	11/11/08
7	DEA INDEPENDENT 60% REVIEW	11/18/08
8	DEA INDEPENDENT 60% CHECK	11/18/08
9	DEA INDEPENDENT 60% REVIEW	12/02/08
10	DEA INDEPENDENT REVIEW #1	02/26/09
11	DEA INDEPENDENT REVIEW #2	03/17/09
12	DEA INDEPENDENT REVIEW #3	06/22/09
13	PROJECT RECORD SET	01/31/11

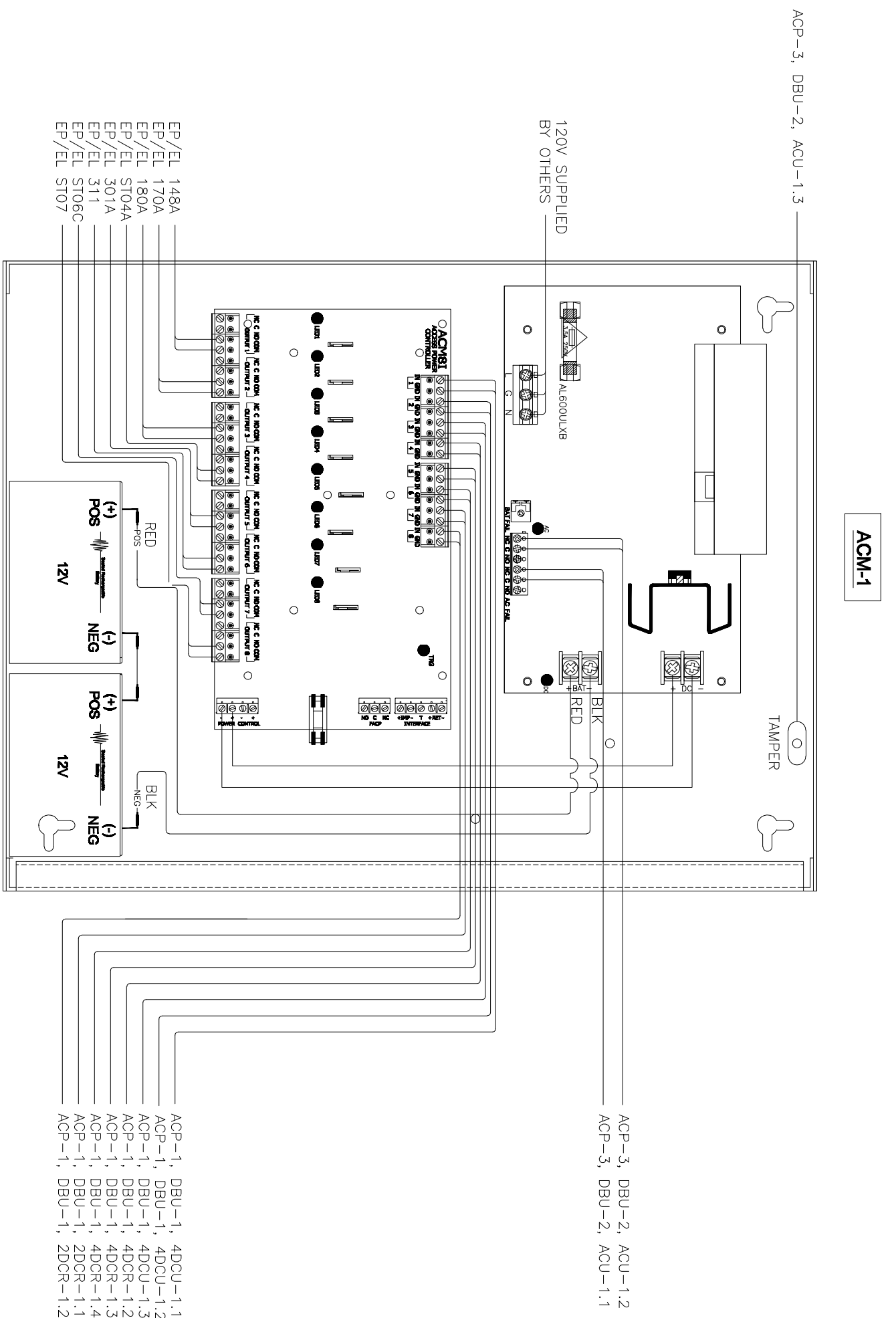
PROJECT RECORD SET

**SKYLINE COLLEGE
 CIP2 DESIGN-BUILD
 BUILDING 4N**

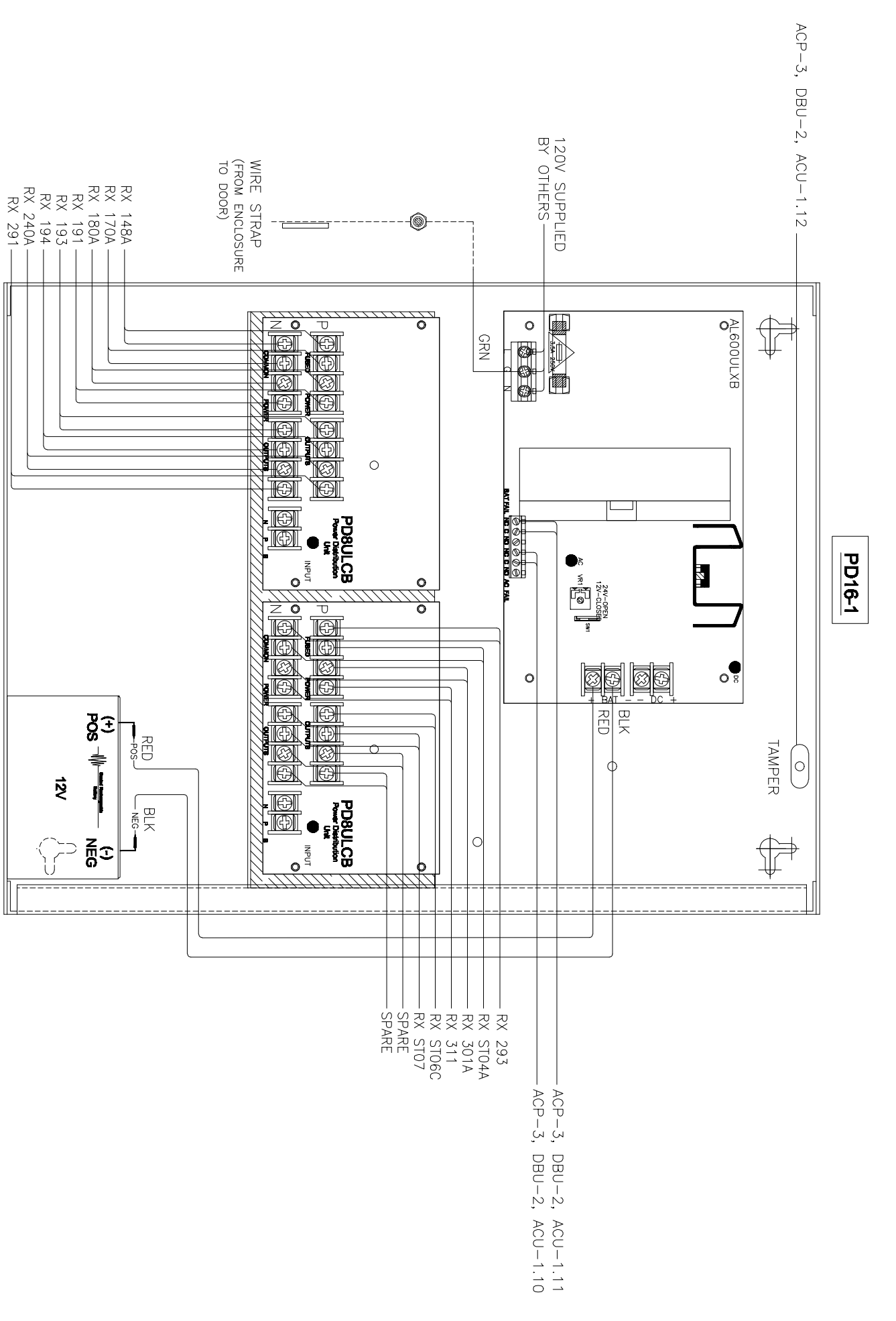


PROJECT NO. 0701200
 DATE 01/29/11
 SCALE AS NOTED
 SHEET TITLE
 DRAWN BY SEC-JAL
 CHECKED BY CM

**ACAMS POWER SUPPLIES
 POINT-TO-POINT
 WIRING DIAGRAM**



1 ACAMS 24 VOLT LOCK POWER SUPPLIES
 SCALE: NTS



2 ACAMS 12 VOLT DEVICE POWER SUPPLIES
 SCALE: NTS

