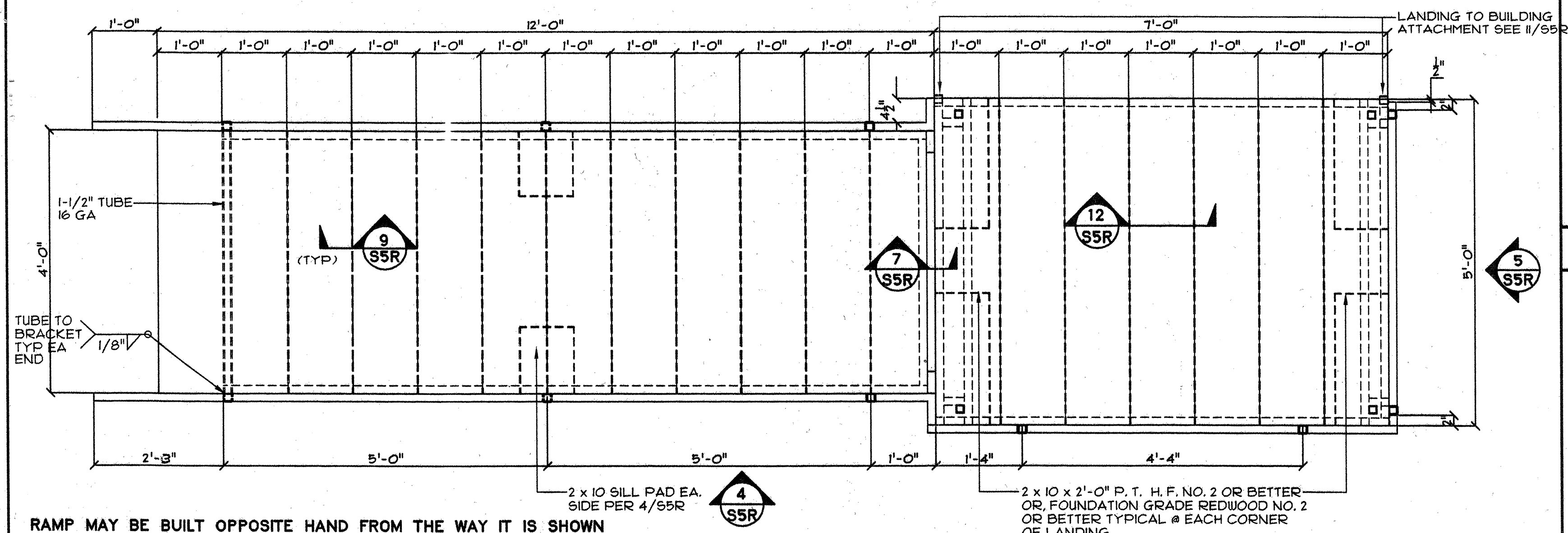
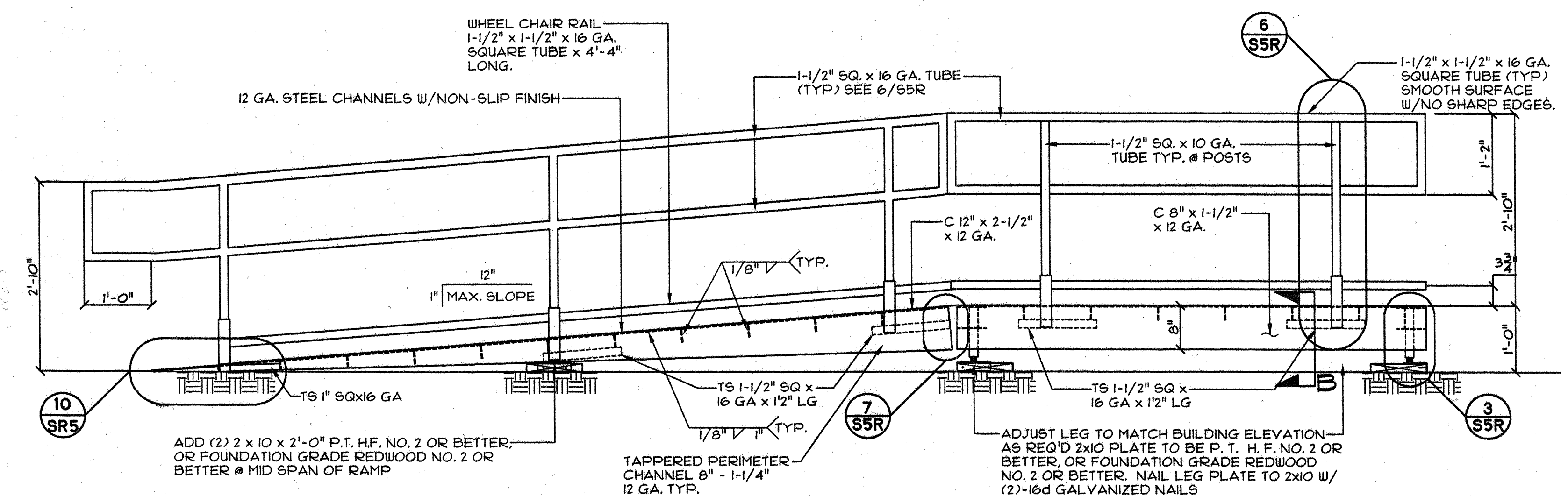


DSA ACCESS COMPLIANCE NOTE: FLOOR HEIGHT MAY VARY FROM 12" TO 18" DEPENDENT UPON FOUNDATION AND SITE CONDITIONS. OWNER SHALL PROVIDE ADDITIONAL RAMP LENGTHS TO MAINTAIN 1" IN 12" SLOPE.

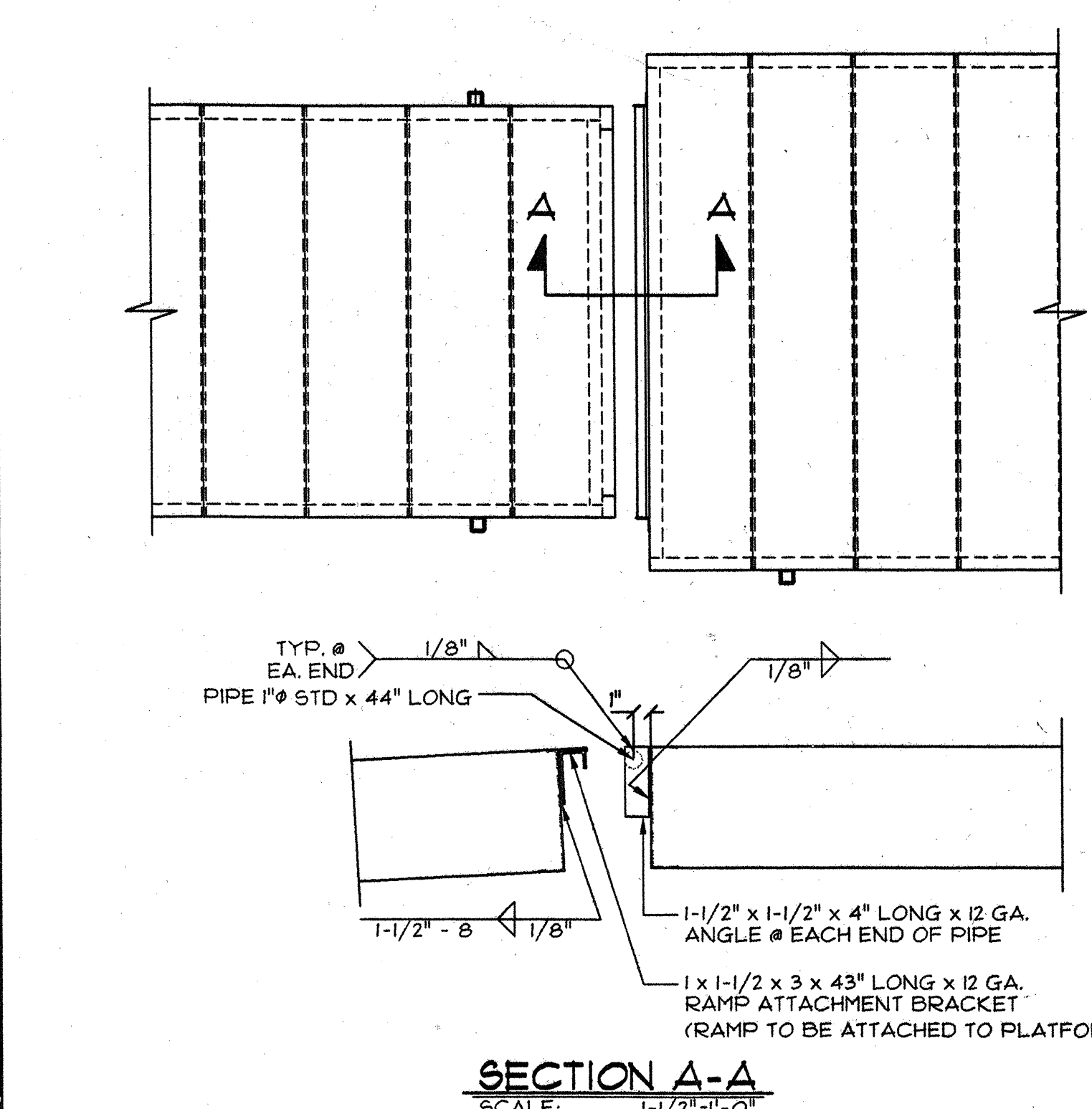


RAMP MAY BE BUILT OPPOSITE HAND FROM THE WAY IT IS SHOWN

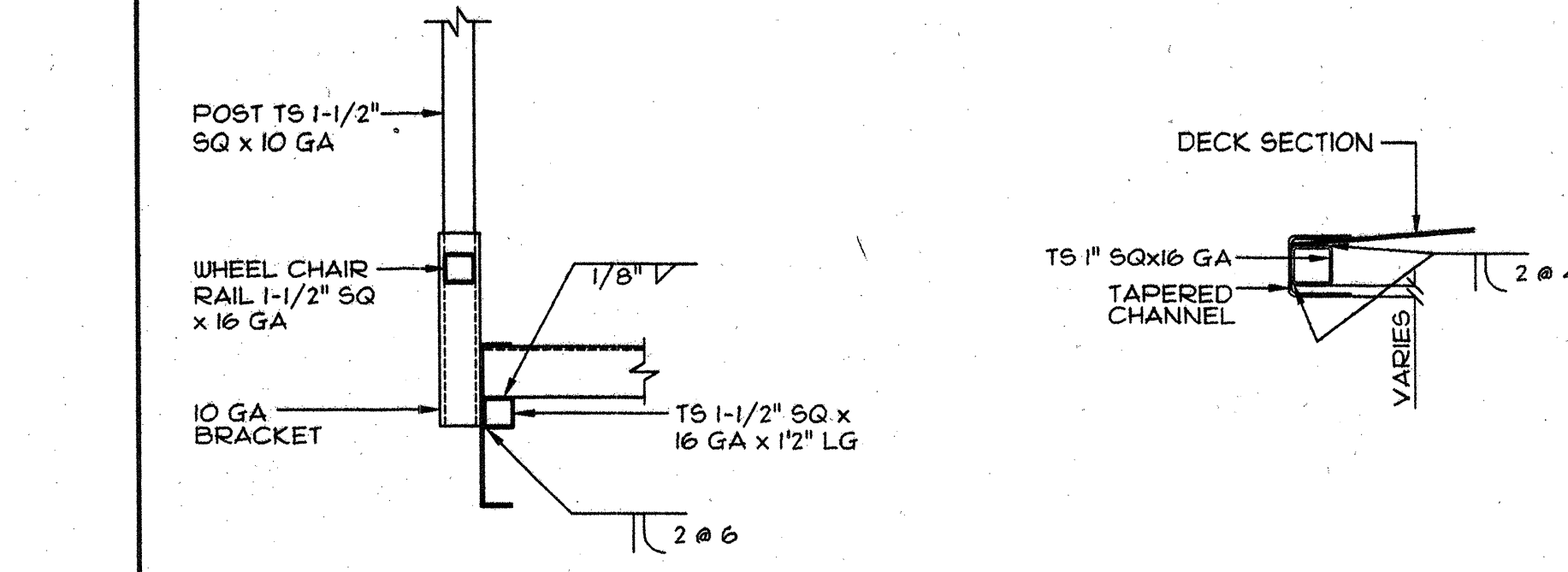
1 RAMP/LANDING FRAMING PLAN
SCALE: 3/4"=1'-0"



4 RAMP/LANDING SIDE ELEVATION
SCALE: 3/4"=1'-0"



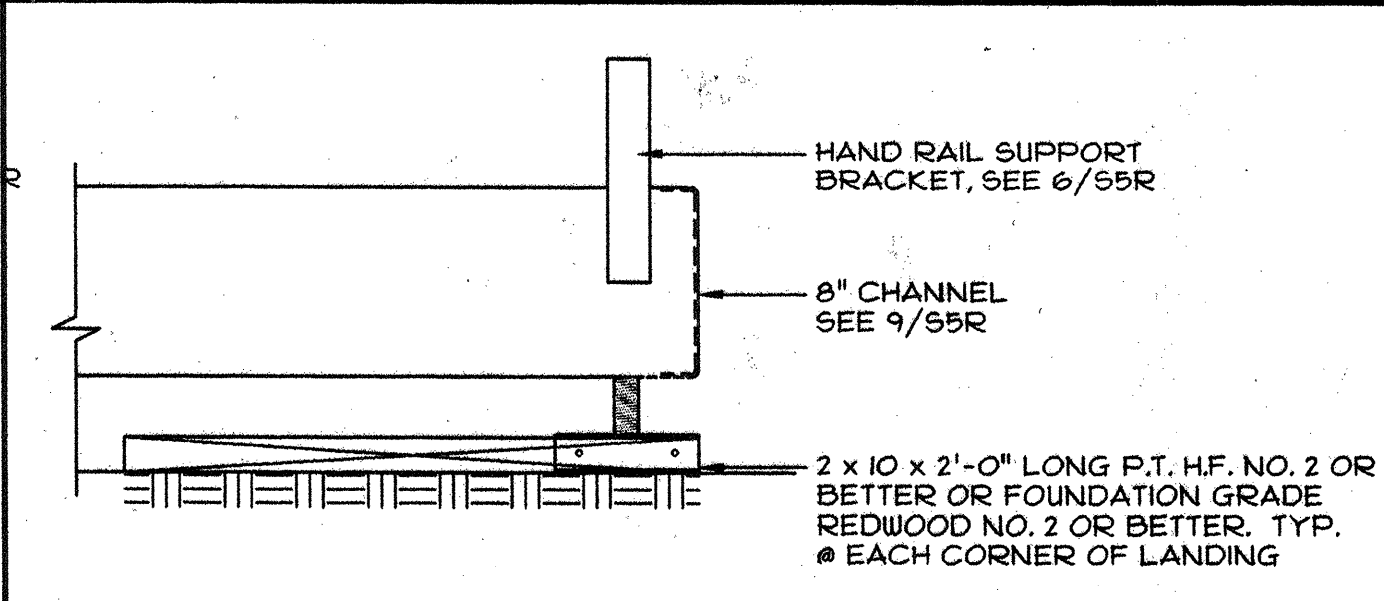
7 RAMP/LANDING ATTACHMENT BRACKETS
SCALE: 3/4"=1'-0" OR AS NOTED



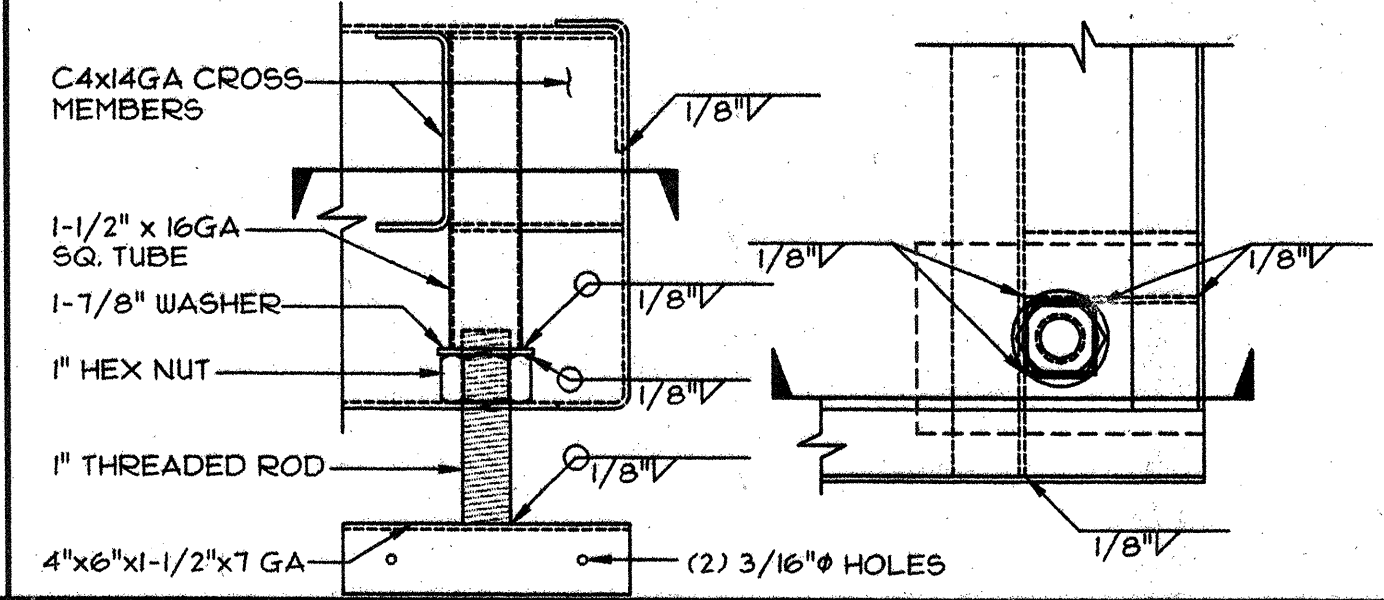
SECTION B-B SCALE: 1-1/2"=1'-0"
SECTION C-C SCALE: 3"=1'-0"

EFFECTIVE SECTION PROPERTIES				
	FLOOR CHANNELS	FLOOR JOIST	PERIMETER BEAM	
A (IN ²)	1.51	.51	.69	1.10
I _x MIN (IN ⁴)	1.52	1.19	1.58	8.36
S _x MIN (IN ³)	.75	.59	.79	2.12
T (IN)	.105"(12 GA.)	.075"(14 GA.)	.105"(12 GA.)	.105"(12 GA.)

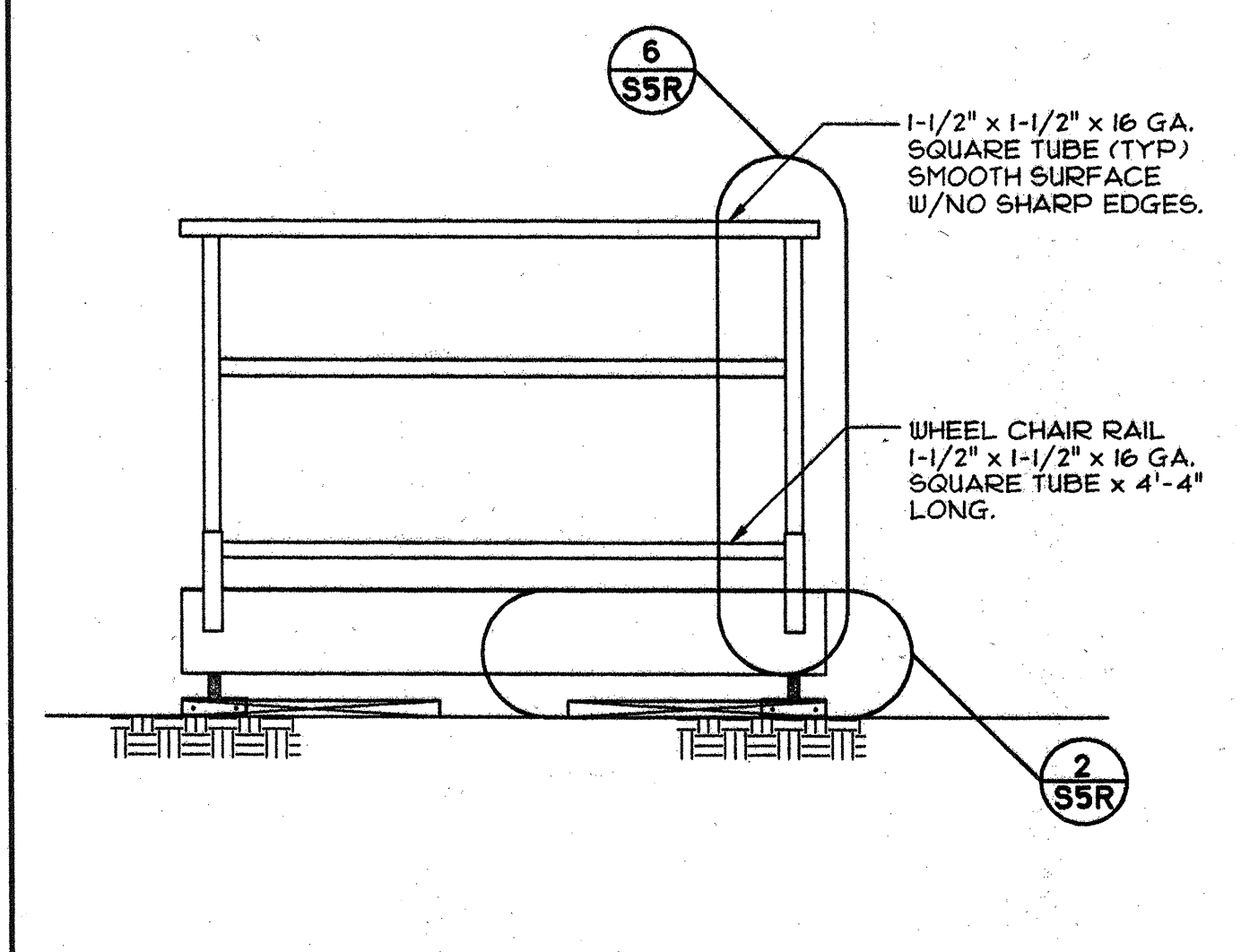
9 FLOOR CHANNEL AND PERIMETER BEAM
SCALE: 3"=1'-0"



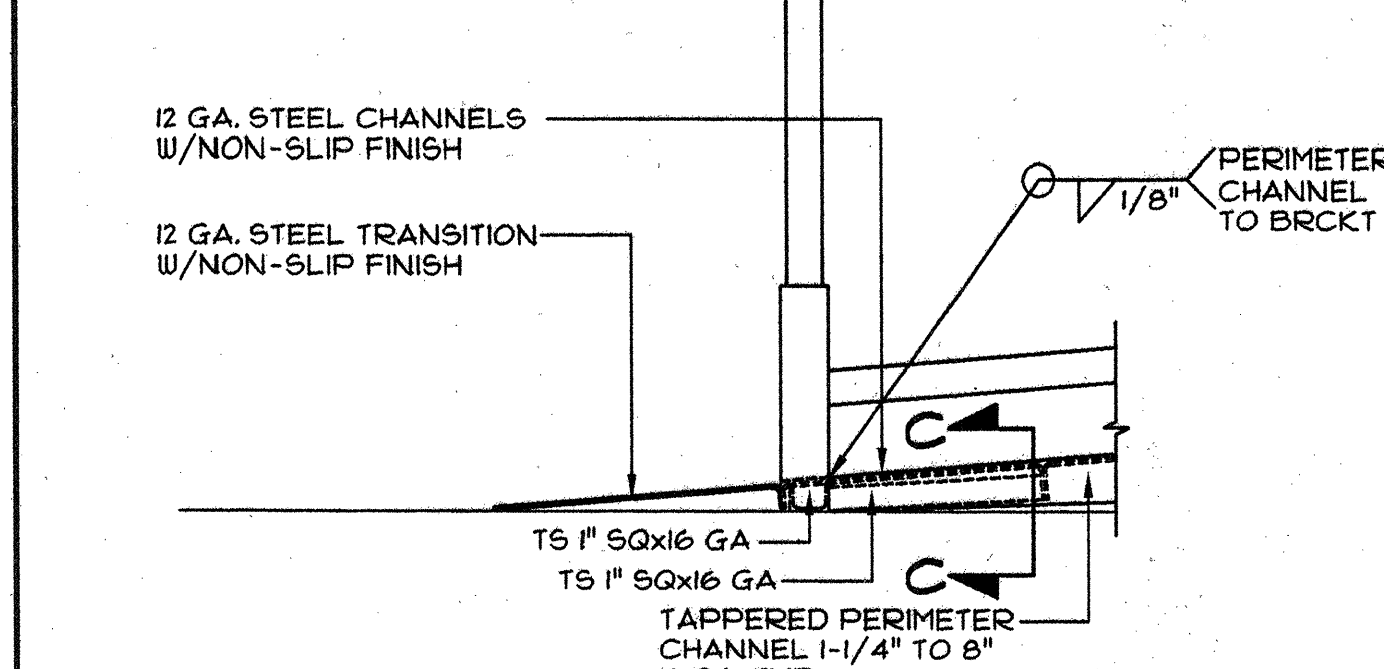
2 LANDING BASE
SCALE: 1-1/2"=1'-0"



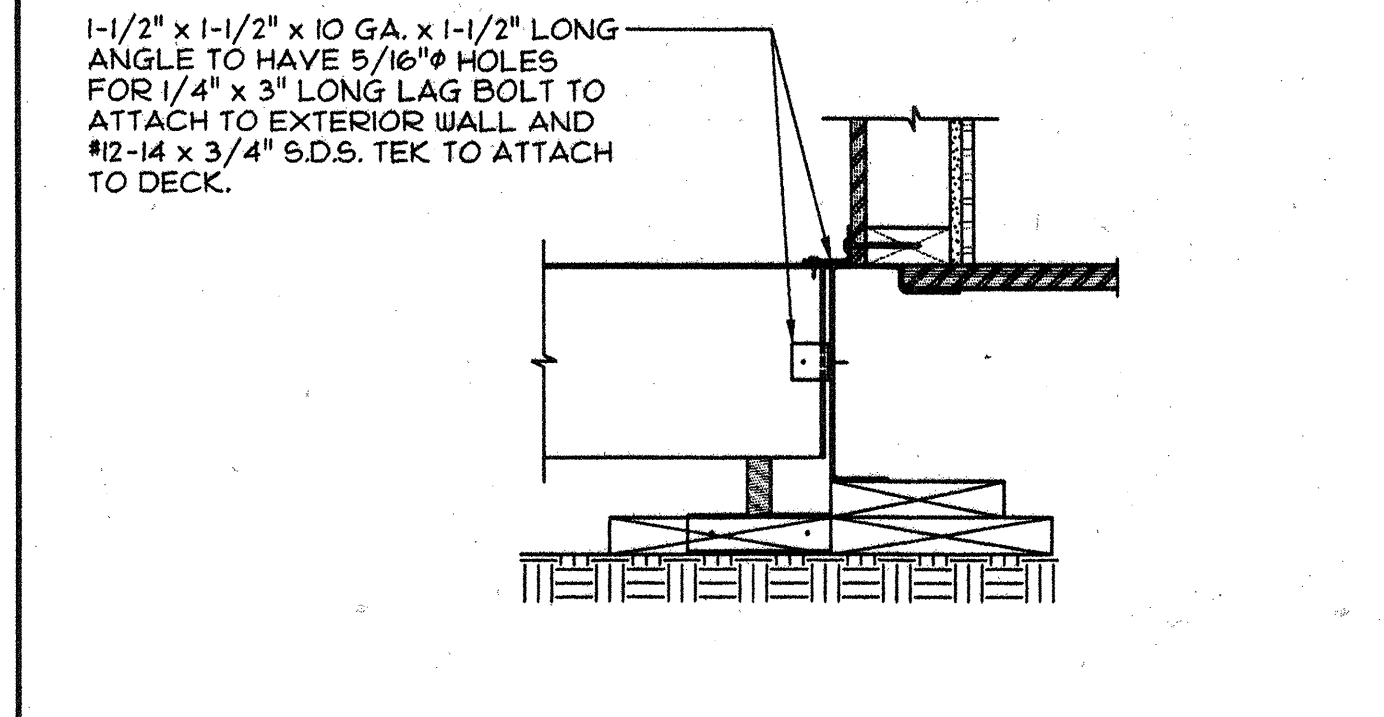
3 ADJUSTABLE LEG & BASE DETAIL
SCALE: 3"=1'-0"



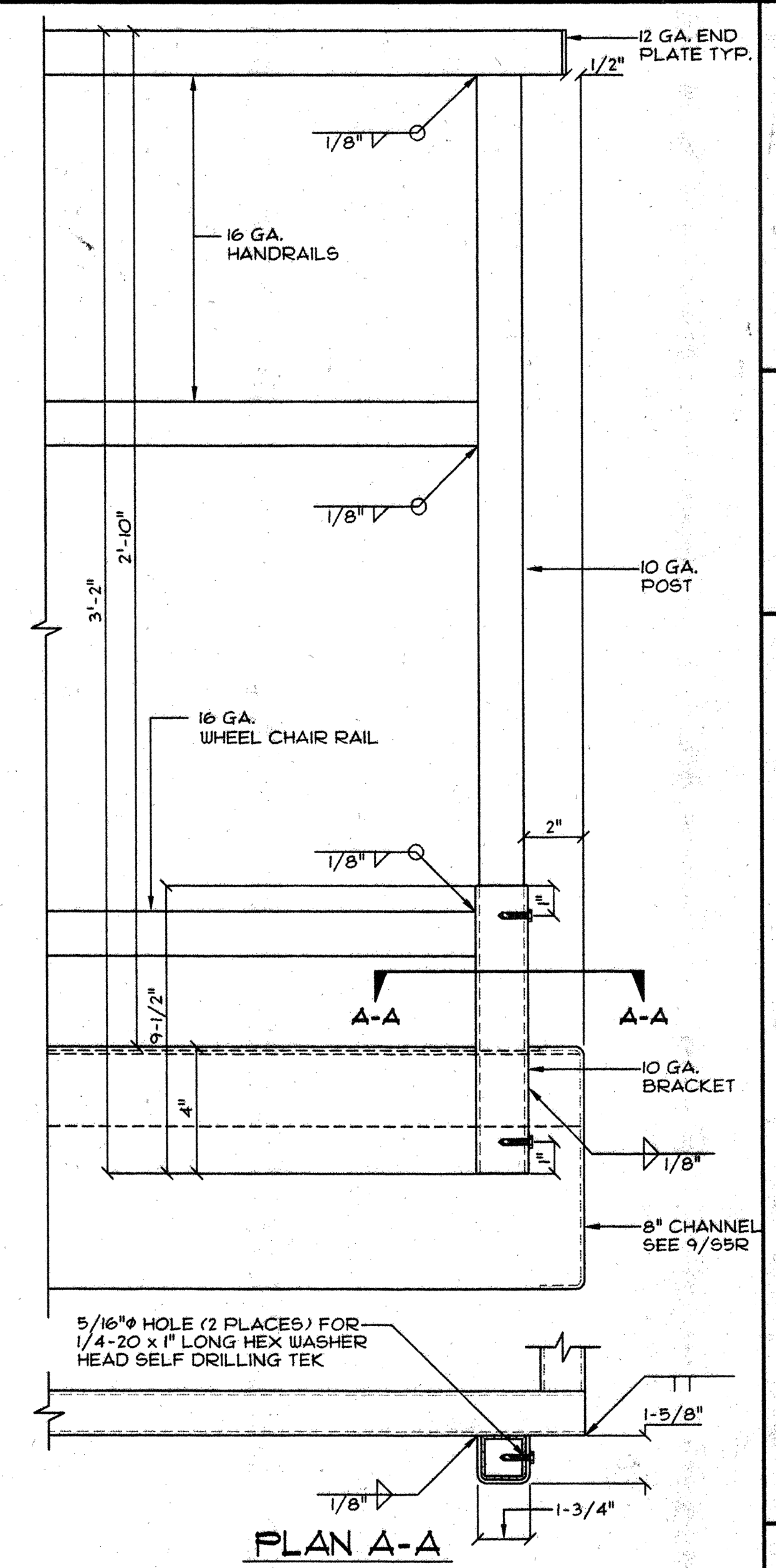
5 END ELEVATION
SCALE: 3/4"=1'-0"



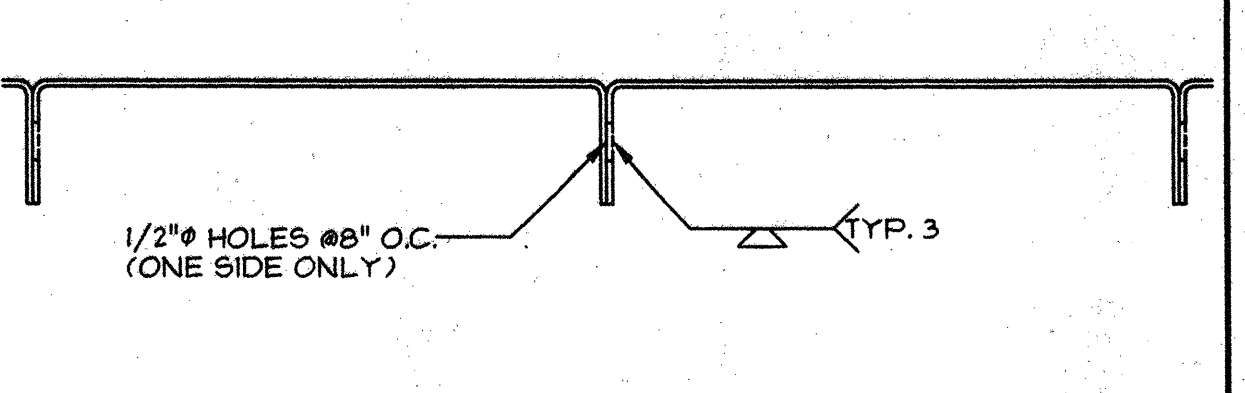
10 O-CLEARANCE TRANSITION
SCALE: 1-1/2"=1'-0"



11 LANDING ATTACHMENT TO BUILDING
SCALE: 1-1/2"=1'-0"



6 HANDRAIL SUPPORT BRACKET
SCALE: 3"=1'-0"



12 FLOOR CHANNEL ATTACHMENT
SCALE: 3"=1'-0"

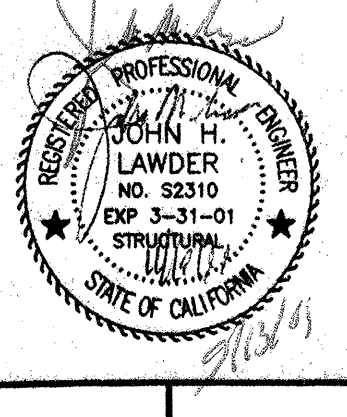
IDENTIFICATION STAMP
DIVISION OF THE STATE ARCHITECT
APPROVAL: 104070
AC: FLS
DATE: 11/19/99

PC
IDENTIFICATION STAMP
DIVISION OF THE STATE ARCHITECT
02-101236
AC: FLS
DATE: 11/19/99

DESIGN CRITERIA
RAMP: DEAD LOAD - 5.0 PSF
RAMP: LIVE LOAD - 100.0 PSF

13 APPROVALS

JH Lawder, Inc.
Structural Engineers
717 16th Street
Modesto, CA 95354
(209) 521-1143 FAX (209) 521-1168



ENVIROPLEX, INC.
4777 E. CARPENTER ROAD STOCKTON, CA. 95215

HANDICAP ACCESS RAMP

REVISION DATE: BY:

DATE:

THIS MODULAR BLDG. HAS BEEN ENGINEERED BY A REGISTERED STRUCTURAL ENGINEER AND PREVIOUSLY REVIEWED & APPROVED BY THE DIVISION OF THE STATE ARCHITECT, FIRE & LIFE SAFETY AND ACCESS COMPLIANCE SECTION

CONFIDENTIAL MATERIAL - THESE DOCUMENTS ARE THE PROPERTY OF AND ARE NOT TO BE REPRODUCED OR DISTRIBUTED WITHOUT FULL KNOWLEDGE AND WRITTEN CONSENT FROM ENVIROPLEX, INC. © COPYRIGHT 1999 ENVIROPLEX, INC. (ALL DRAWINGS PREPARED BY ENVIROPLEX, INC.)

S5R