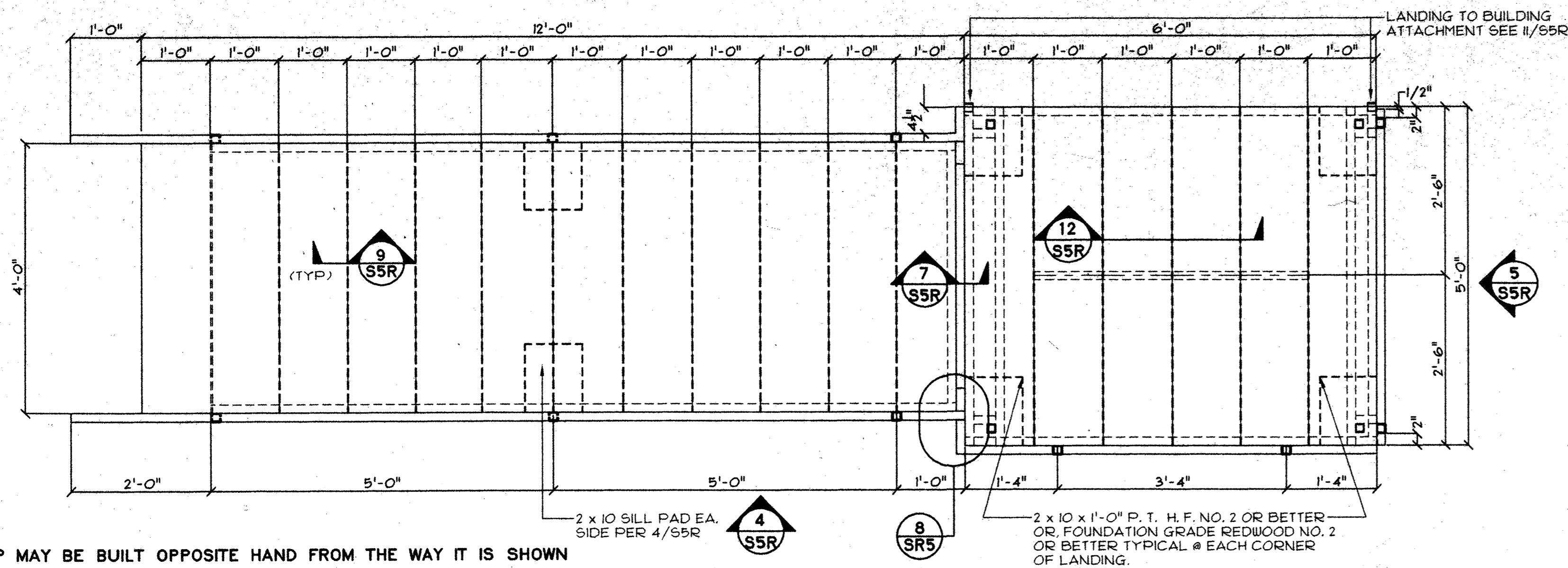
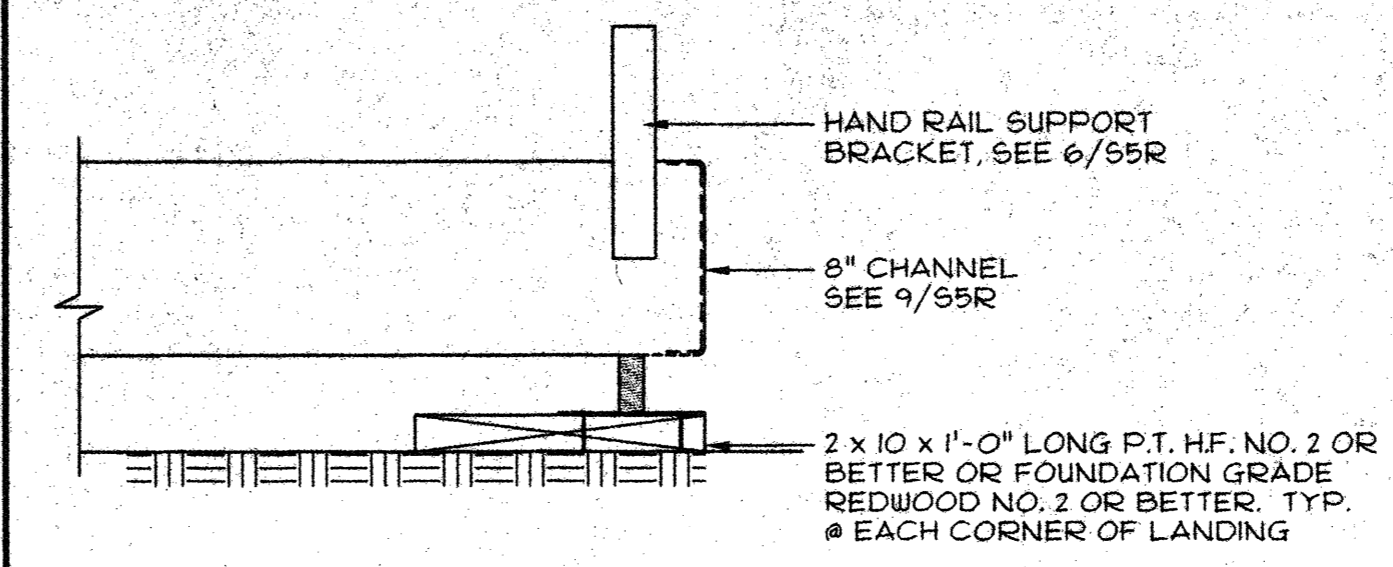


DSA ACCESS COMPLIANCE NOTE: FLOOR HEIGHT MAY VARY FROM 12" TO 18" DEPENDENT UPON FOUNDATION AND SITE CONDITIONS. OWNER SHALL PROVIDE ADDITIONAL RAMP LENGTHS TO MAINTAIN 1" IN 12" SLOPE.

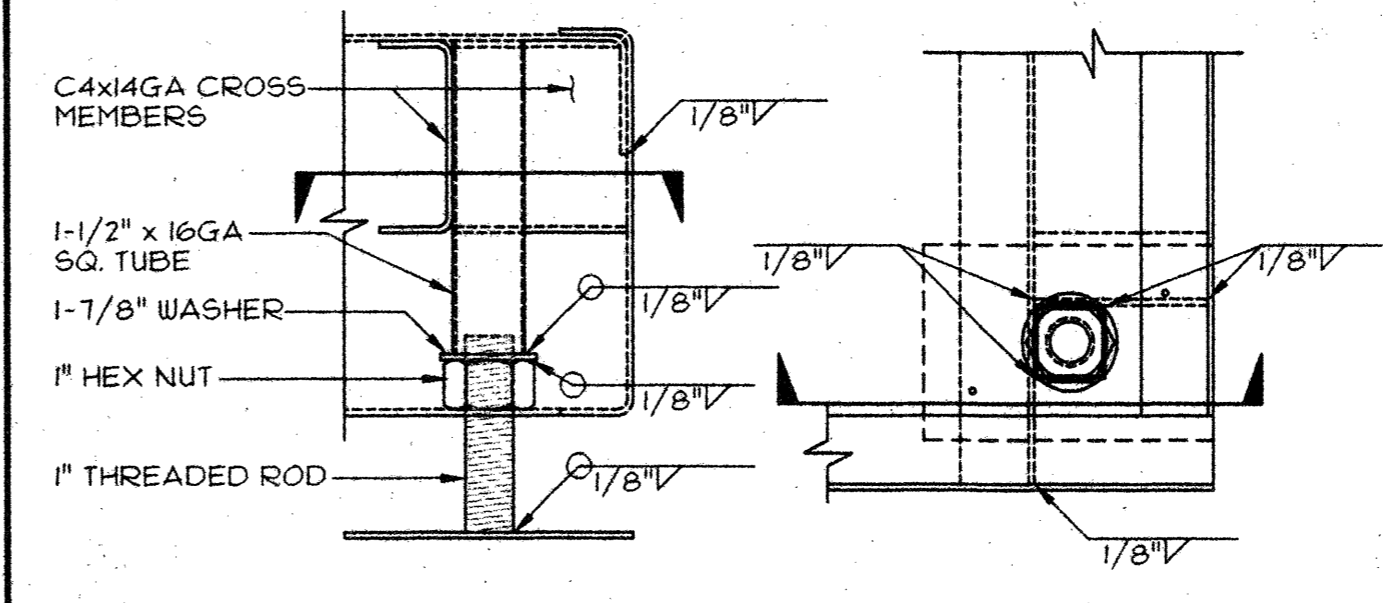


RAMP MAY BE BUILT OPPOSITE HAND FROM THE WAY IT IS SHOWN

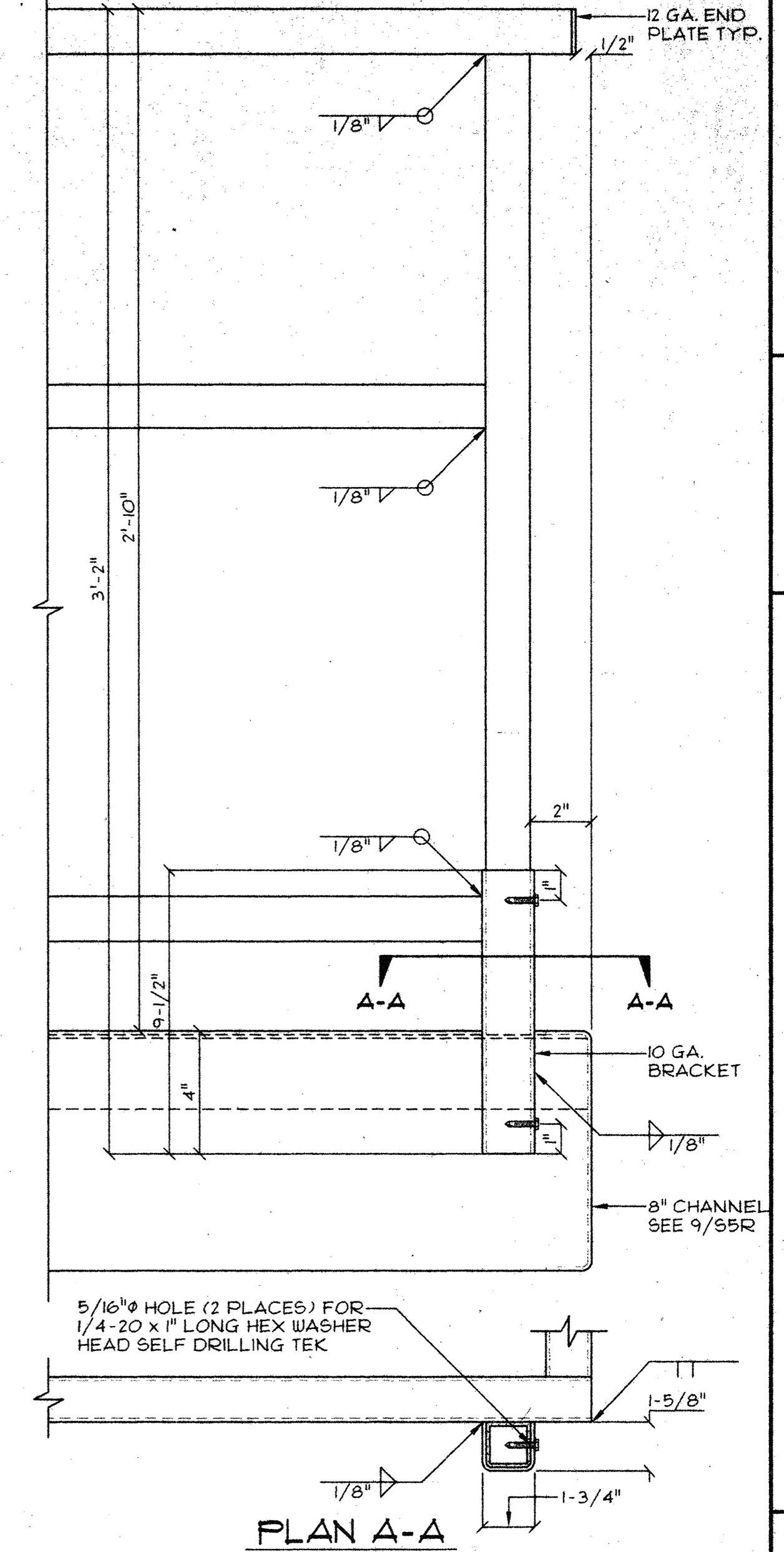
1 RAMP/LANDING FRAMING PLAN
SCALE: 3/4"=1'-0"



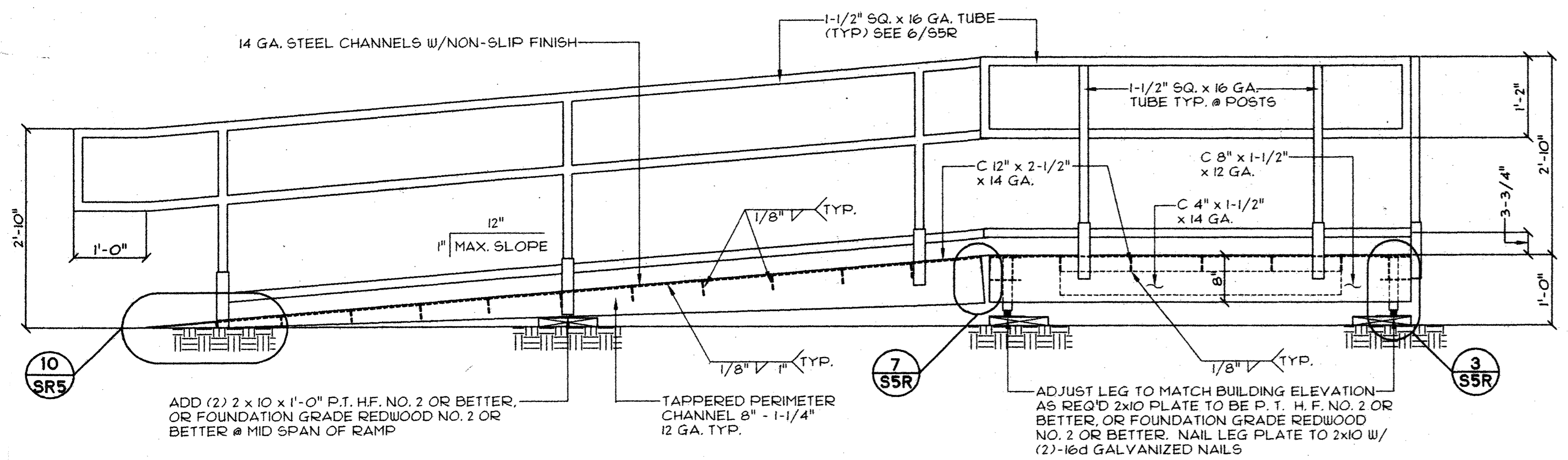
2 LANDING BASE
SCALE: 1-1/2"=1'-0"



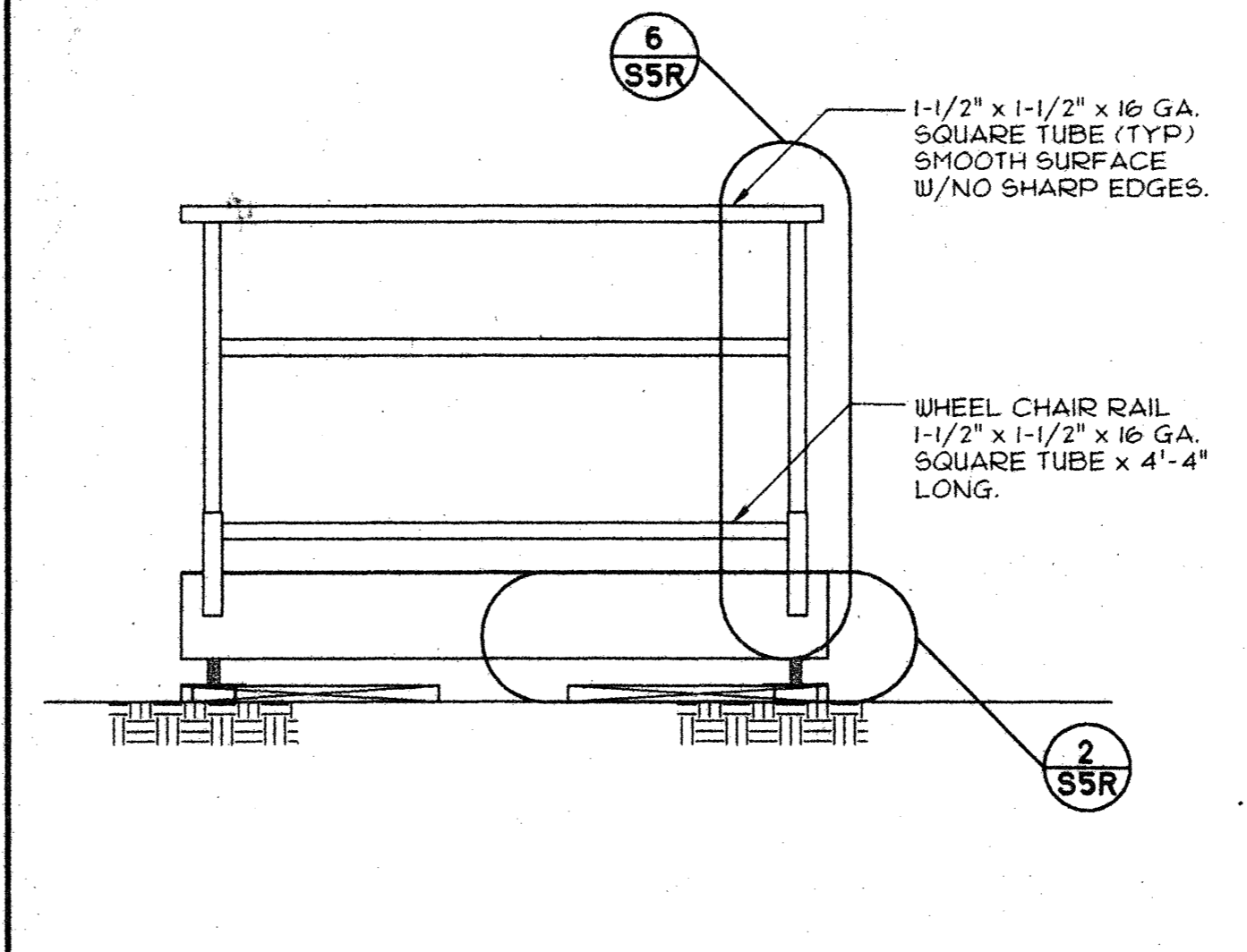
3 ADJUSTABLE LEG & BASE DETAIL
SCALE: 3"=1'-0"



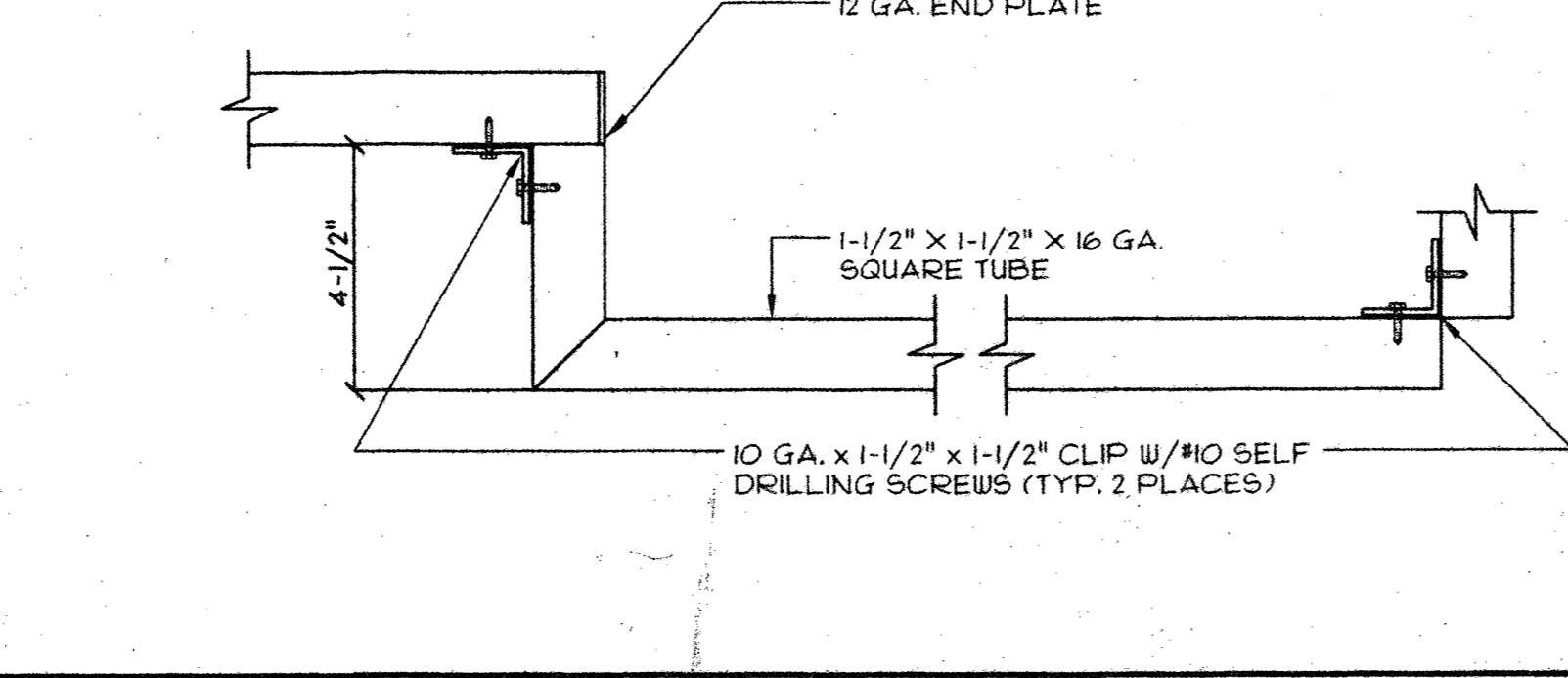
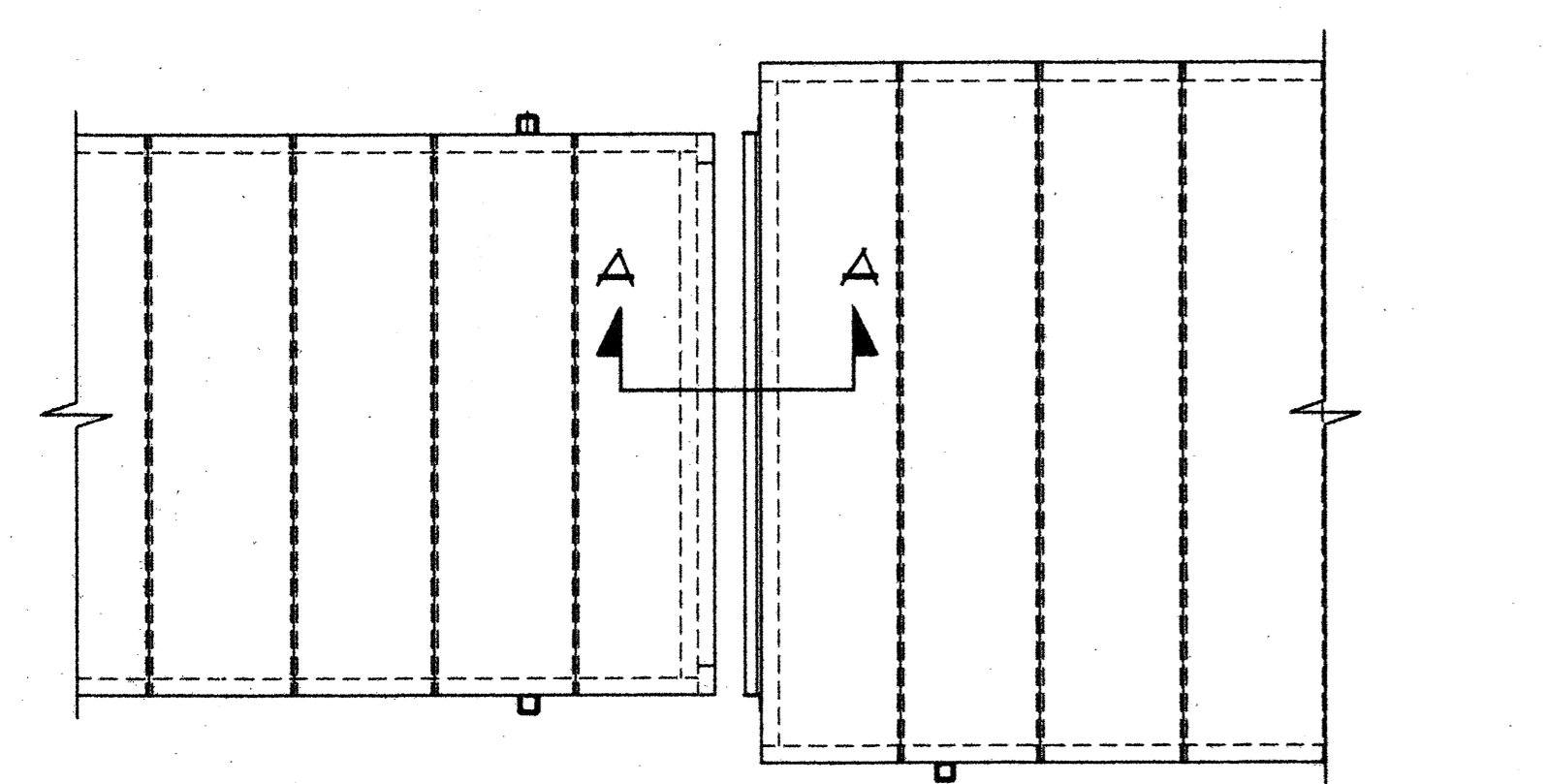
6 HANDRAIL SUPPORT BRACKET
SCALE: 3"=1'-0"



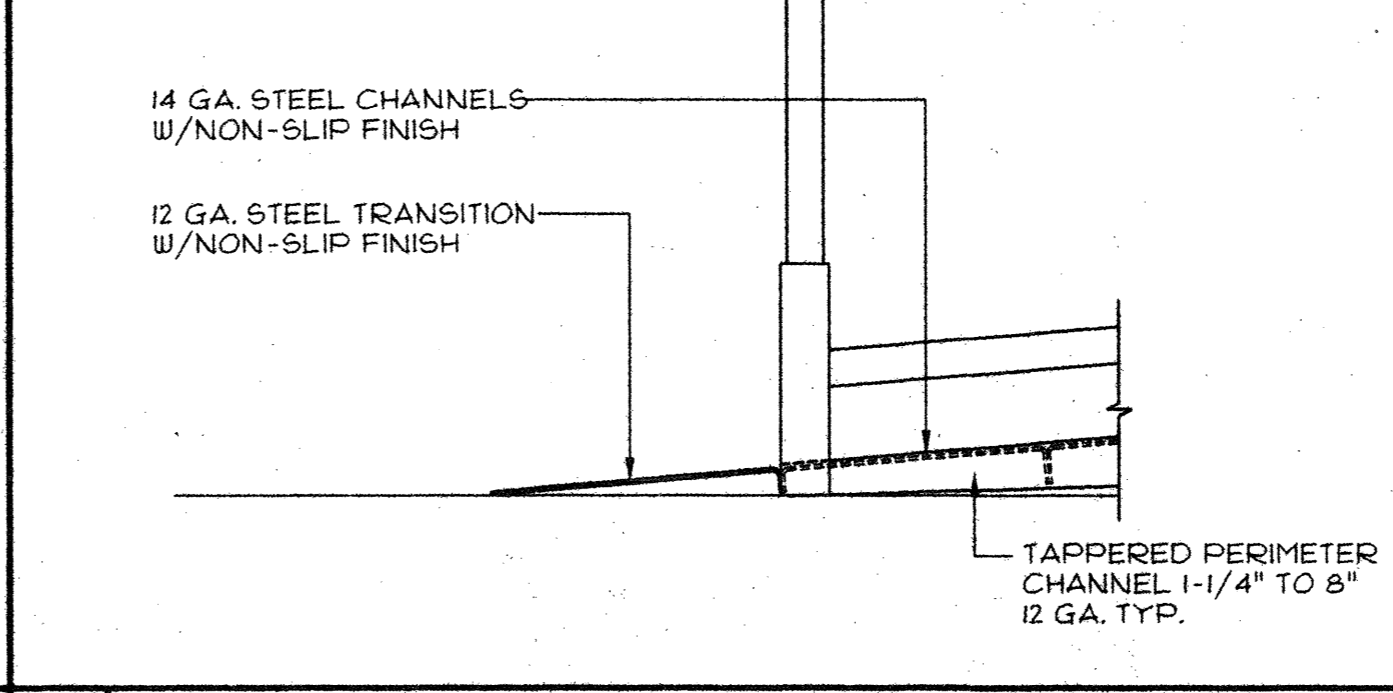
4 RAMP/LANDING SIDE ELEVATION
SCALE: 3/4"=1'-0"



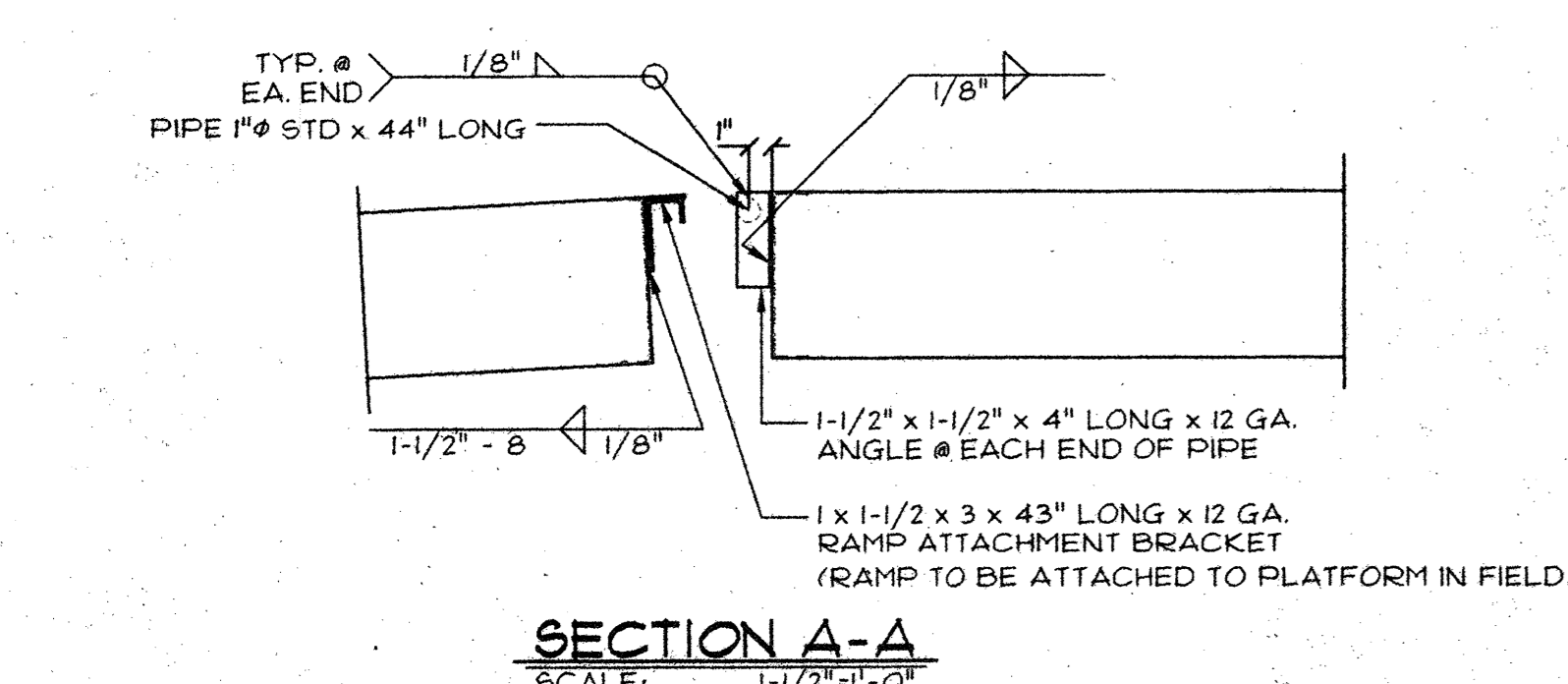
5 END ELEVATION
SCALE: 3/4"=1'-0"



8 HANDRAIL/WHEEL CHAIR RAIL EXTENSION
SCALE: 3"=1'-0"

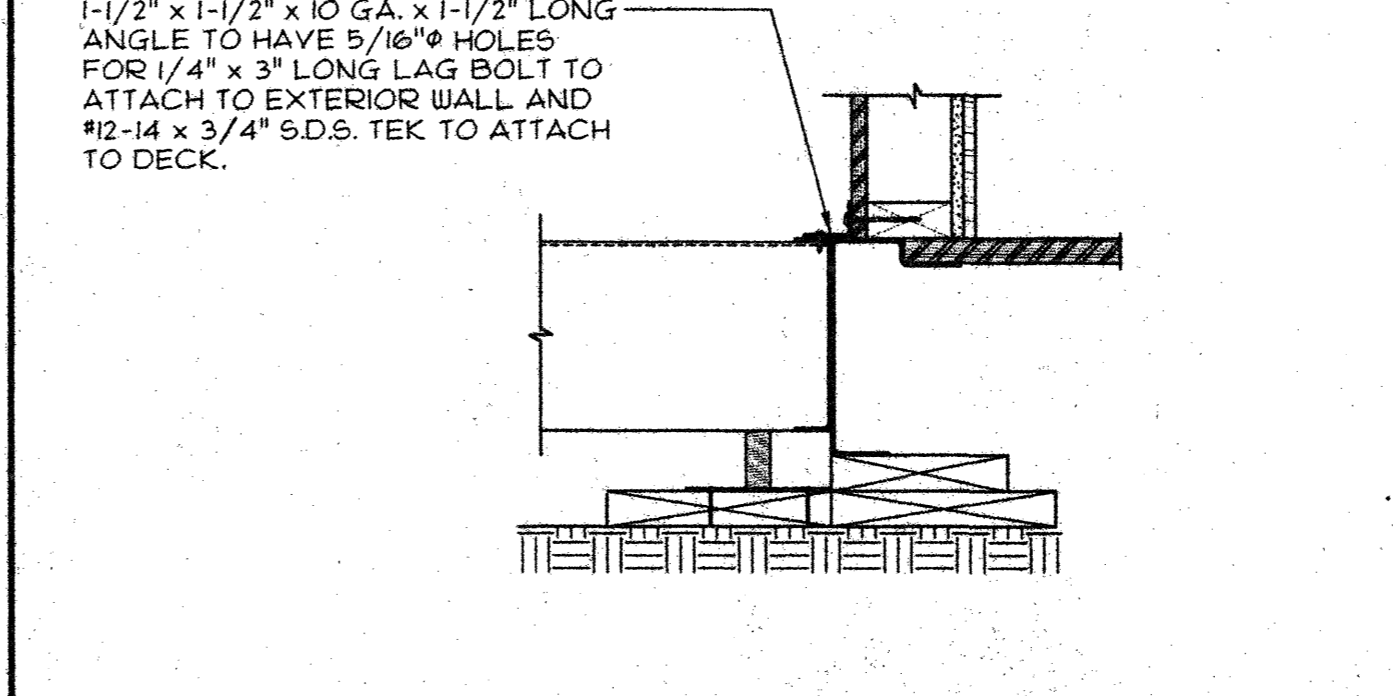


10 O-CLEARANCE TRANSITION
SCALE: 1-1/2"=1'-0"

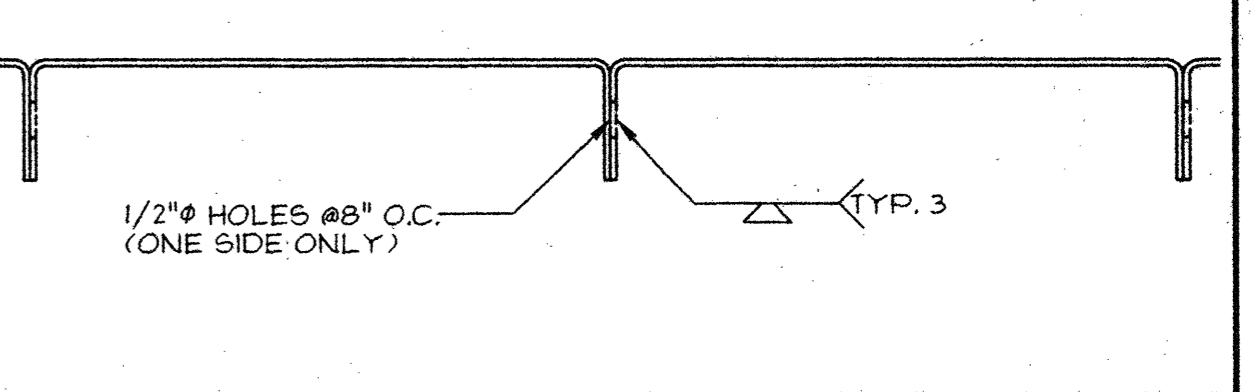


EFFECTIVE SECTION PROPERTIES			
	FLOOR CHANNELS	FLOOR JOIST	PERIMETER BEAM
A (IN ²)	1.22	.35	.69
I _x MIN (IN ⁴)	.43	.62	1.58
S _x MIN (IN ³)	.22	.33	.79
T (IN)	.0747"(14 GA.)	.06"(16 GA.)	.105"(12 GA.)

9 FLOOR CHANNEL AND PERIMETER BEAM
SCALE: 3"=1'-0"



11 LANDING ATTACHMENT TO BUILDING
SCALE: 1-1/2"=1'-0"



12 FLOOR CHANNEL ATTACHMENT
SCALE: 3"=1'-0"

DIVISION OF THE STATE ARCHITECT OFFICE OF REGULATION SERVICES

APPROVALS

REVISION DATE: BY:

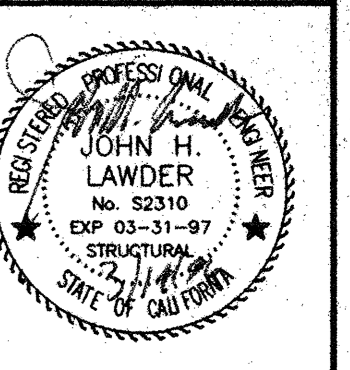
DATE:

RAMP: DEAD LOAD - 5.0 PSF
RAMP: LIVE LOAD - 100.0 PSF

THIS MODULAR BLDG. HAS BEEN ENGINEERED BY A REGISTERED STRUCTURAL ENGINEER AND PREVIOUSLY REVIEWED & APPROVED BY THE DIVISION OF THE STATE ARCHITECT, FIRE & LIFE SAFETY AND ACCESS COMPLIANCE SECTION

7 RAMP/LANDING ATTACHMENT BRACKETS
SCALE: 3/4"=1'-0" OR AS NOTED

JH Lawder, Inc.
Structural Engineers
621 14th STREET
WOODSTOCK, CA 95354
(925) 521-1145
(925) 521-1166



ENVIROPLEX, INC.
4777 E. CARPENTER ROAD STOCKTON, CA. 95215
36'x40' RELOCATABLE CLASSROOM FOR
SKYLINE COLLEGE CHILD DEVELOPMENT CENTER

HANDICAP ACCESS RAMP

CONFIDENTIAL MATERIAL - THESE DOCUMENTS ARE THE PROPERTY OF AND ARE NOT TO BE REPRODUCED OR DISTRIBUTED WITHOUT FULL KNOWLEDGE AND WRITTEN CONSENT FROM ENVIROPLEX, INC.
© COPYRIGHT 1996 ENVIROPLEX, INC. (DRAWINGS PREPARED BY ENVIROPLEX, INC.)