

**WALL TO FRAME FASTENING:**

- WALL PANEL TOP PLATE TO PERIMETER ROOF BEAM: (1) 1/4" x 2" LAG SCREWS FROM ROOF BEAM BOTT. FLANGE INTO TOP PLATE @ 18" O.C. MAX.
- WALL PANEL BOTTOM PLATE TO PERIMETER FLOOR BEAM: 1/4" x 20 TEK'S/4 SCREWS @ 16" O.C. FROM BOTT. PLATE INTO FLOOR BEAM TOP FLANGE
- WALL PANEL SIDE STUDS TO CORNER COLUMNS: #12-24 x 2 1/2" S.D.S. @ 16" O.C. FROM SIDE STUD INTO STEEL CORNER COLUMN.
- TOP AND BOTTOM PLATE TO STUDS AND KING STUDS: (3) 135 x 3 1/4" LONG MACHINE NAIL
- DOUBLE STUDS, TRIMMERS, SILLS AND CRIPPLES STICH NAILED: #12-24 x 2 1/2" S.D.S. @ 16" O.C.
- CRIPPLES, TRIMMERS END NAILED: (3) 135 x 3 1/4" LONG MACHINE NAIL EA. END TO PLATES AND SILLS.
- CRIPPLES, TRIMMERS NAILED TO HEADERS: (3) 135 x 3 1/4" LONG MACHINE NAIL EA. END TO PLATES AND SILLS.
- ALL HANGERS, STRAPS, CLIPS, ETC.: NAILED AS PER MANUFACTURER'S SPECS.
- FASTENING CONDITIONS NOT NOTED ABOVE: TABLE 2304.9J 2007 C.B.C.

**CEILING / FLOOR FASTENING:**

- CEILING BEAM TO ROOF BEAM: 1/2" x 4" LAG SCREWS FROM ROOF BEAM INTO CEILING BEAM @ 18" O.C. MAX.
- FLOOR JOIST TO CEILING BEAM: 1/2" x 4" LAG SCREWS FROM CEILING BEAM INTO FLOOR JOIST @ 18" O.C. MAX.

**ROOF:**

- 1/4" APA RATED PLYWOOD: 1/4" x 11/4" PIN (ICC ER-4144) @ 6" O.C. SHEET EDGES, 12" O.C. IN FIELD.
- TO PURLINS & BEAMS (OPT. 1/2" PLYWOOD ROOF): 1/2" x 4" LAG SCREWS FROM PURLIN/BEAM INTO PLYWOOD @ 18" O.C. MAX.

**SIDING:**

- EXTERIOR SIDING: INTO 2x4 OR 2x6 WOOD STUDS; #12-24 x 2 1/2" S.D.S. @ 16" O.C. PANEL EDGES, 12" O.C. IN FIELD. (H.D.G. OR MECH. GALV. NAILS, PER ASTM F-1667) INTO STEEL COLUMNS; #12-24 x 2 1/2" S.D.S. @ 24" O.C.

**GYPSUM WALLBOARD:**

- 1/2" GYP. BOARD: #12-24 x 2 1/2" S.D.S. @ 16" O.C. EDGES, 12" O.C. IN FIELD.
- TO 2x4 OR 2x6 STUDS: #12-24 x 2 1/2" S.D.S. @ 16" O.C. EDGES, 12" O.C. IN FIELD.
- OVERHANG SCREWS: #8 x 1" S.M.S. @ 6" O.C. EDGES, 12" O.C. IN FIELD (PRE-PUNCHED HOLES IN STEEL).

**CYS**  
STRUCTURAL ENGINEERS INC.  
1760 Creechside Oaks Dr. Suite 280  
Vancouver, BC V6L 2K3  
(604) 276-2020 (604) 990-1256 FAX

REGISTERED PROFESSIONAL ENGINEER  
No. 92030  
Exp. 9/30/13  
STATE OF CALIFORNIA

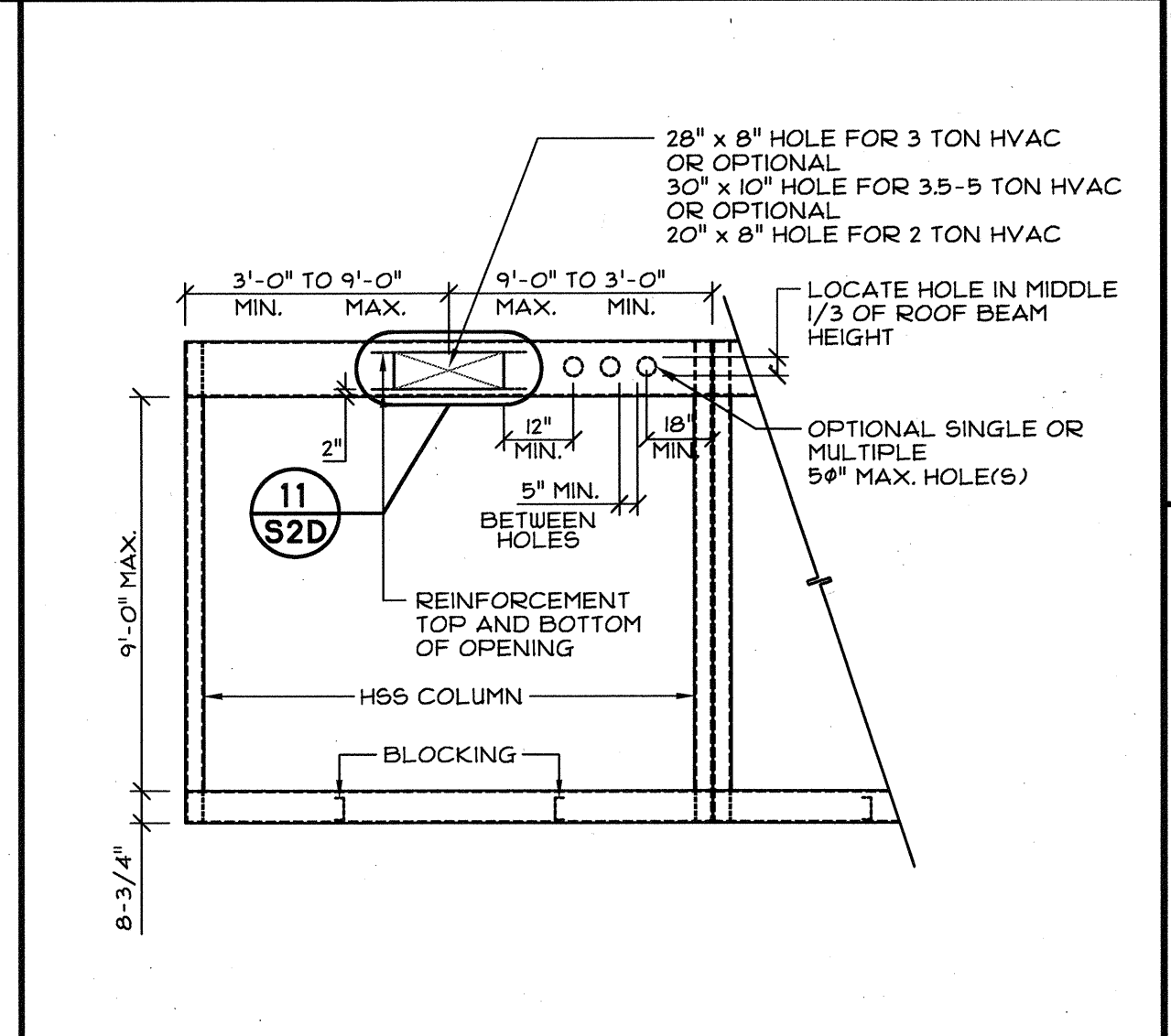
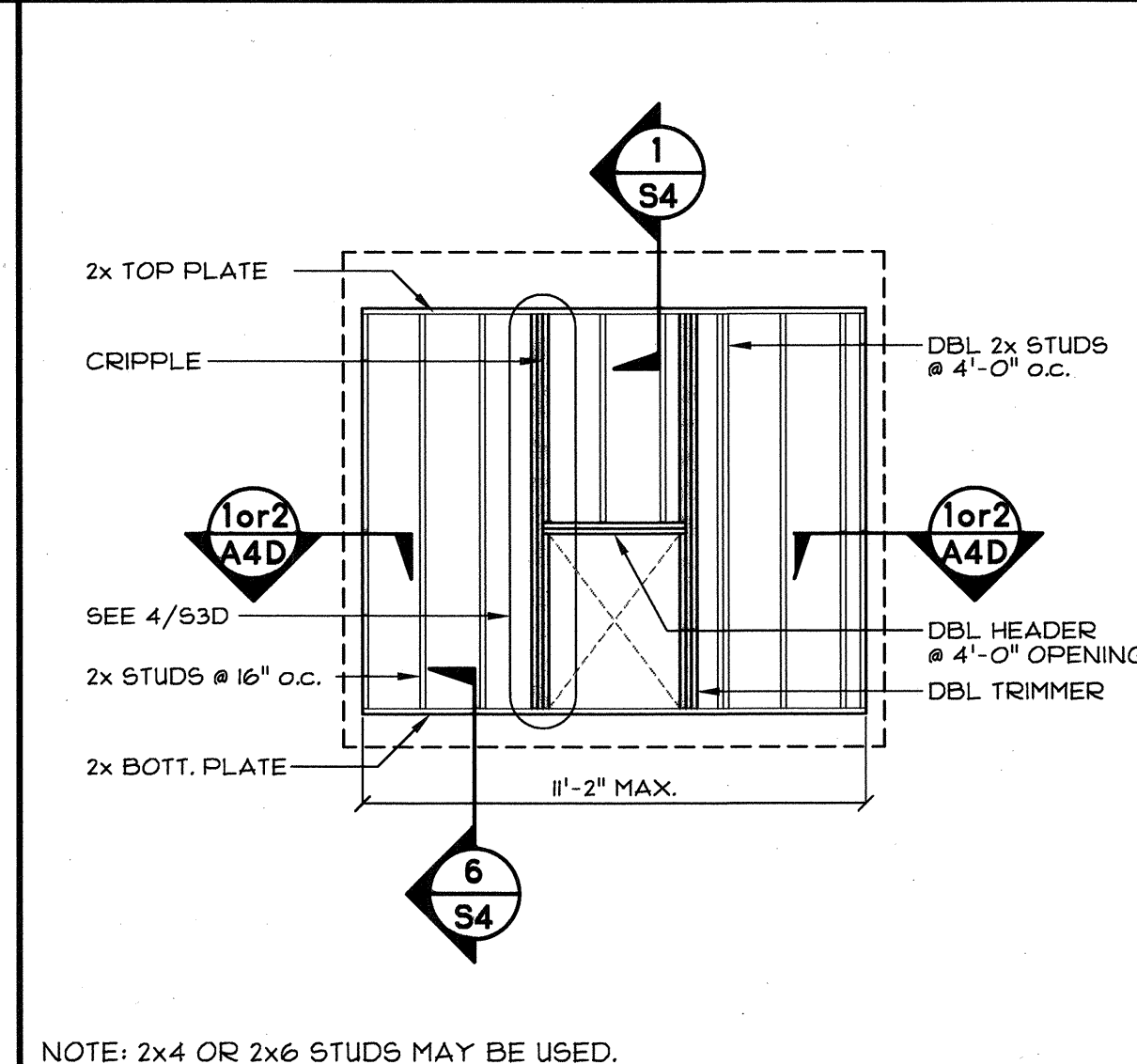
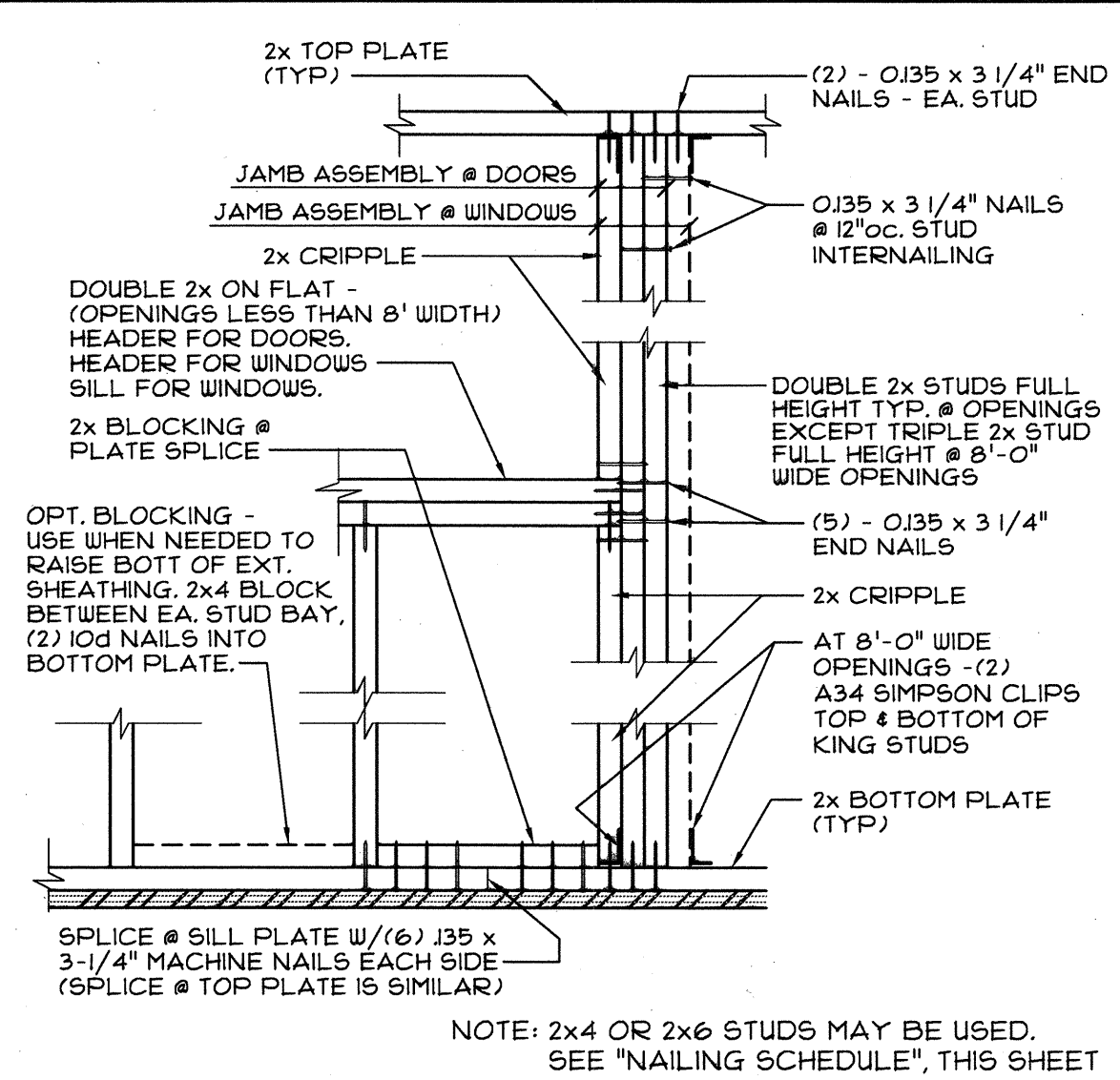
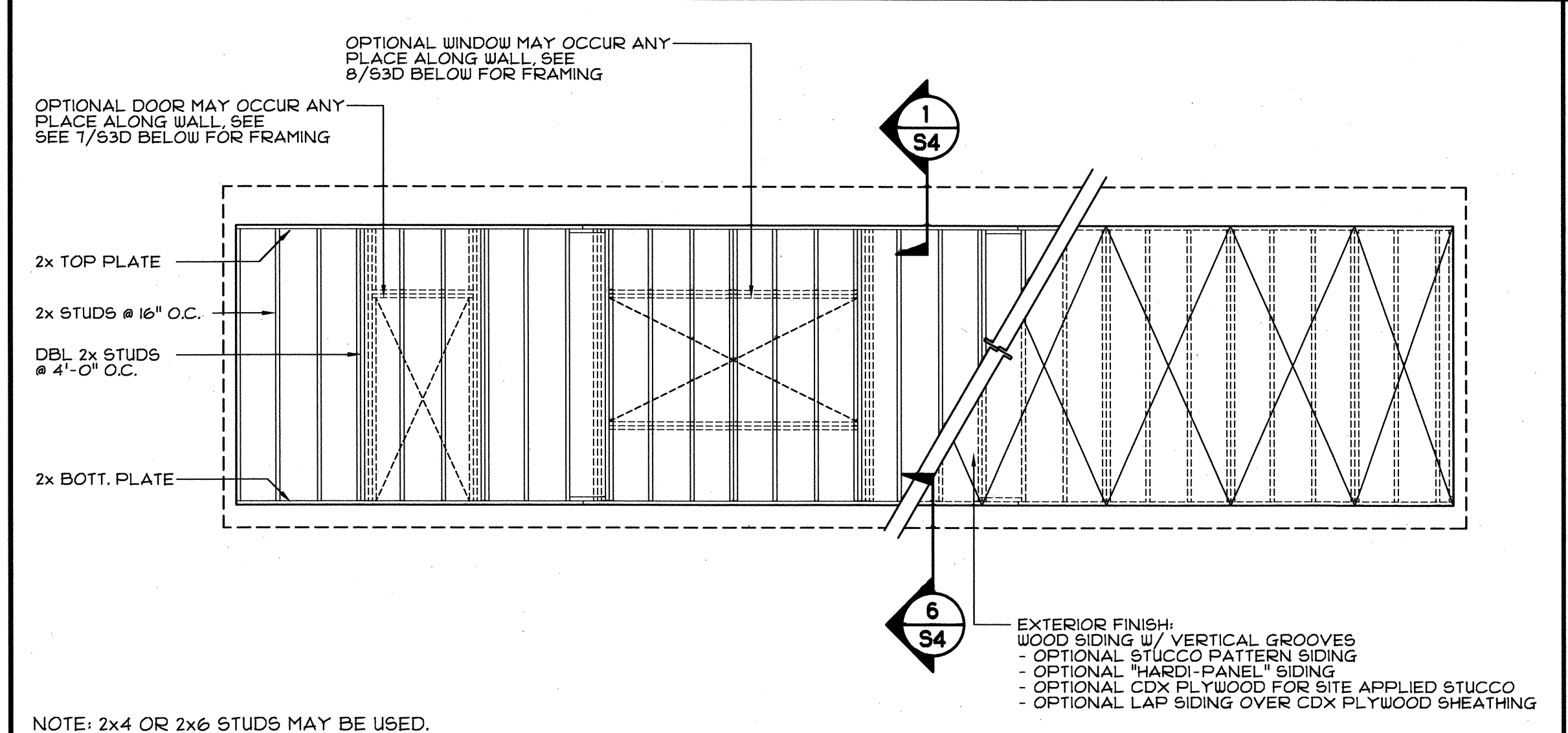
THESE DRAWINGS ARE PRELIMINARY AND NOT FOR CONSTRUCTION UNLESS STAMPED & SIGNED BY THE ENGINEER OF RECORD.

**ENVIROPLEX, INC.**  
4777 E. CARPENTER ROAD STOCKTON, CA 95215, (209) 466-8000

12 MONTH RELOCATABLE RESTROOM BUILDINGS  
OR LA CANADA COLLEGE  
SAI MATEO COMMUNITY COLLEGE DISTRICT

1 **TYPICAL LONGITUDINAL FRAME SECTION - VARIABLE SLOPE ROOF**  
SCALE: 1/2"=1'-0"

2 **NAILING SCHEDULE**

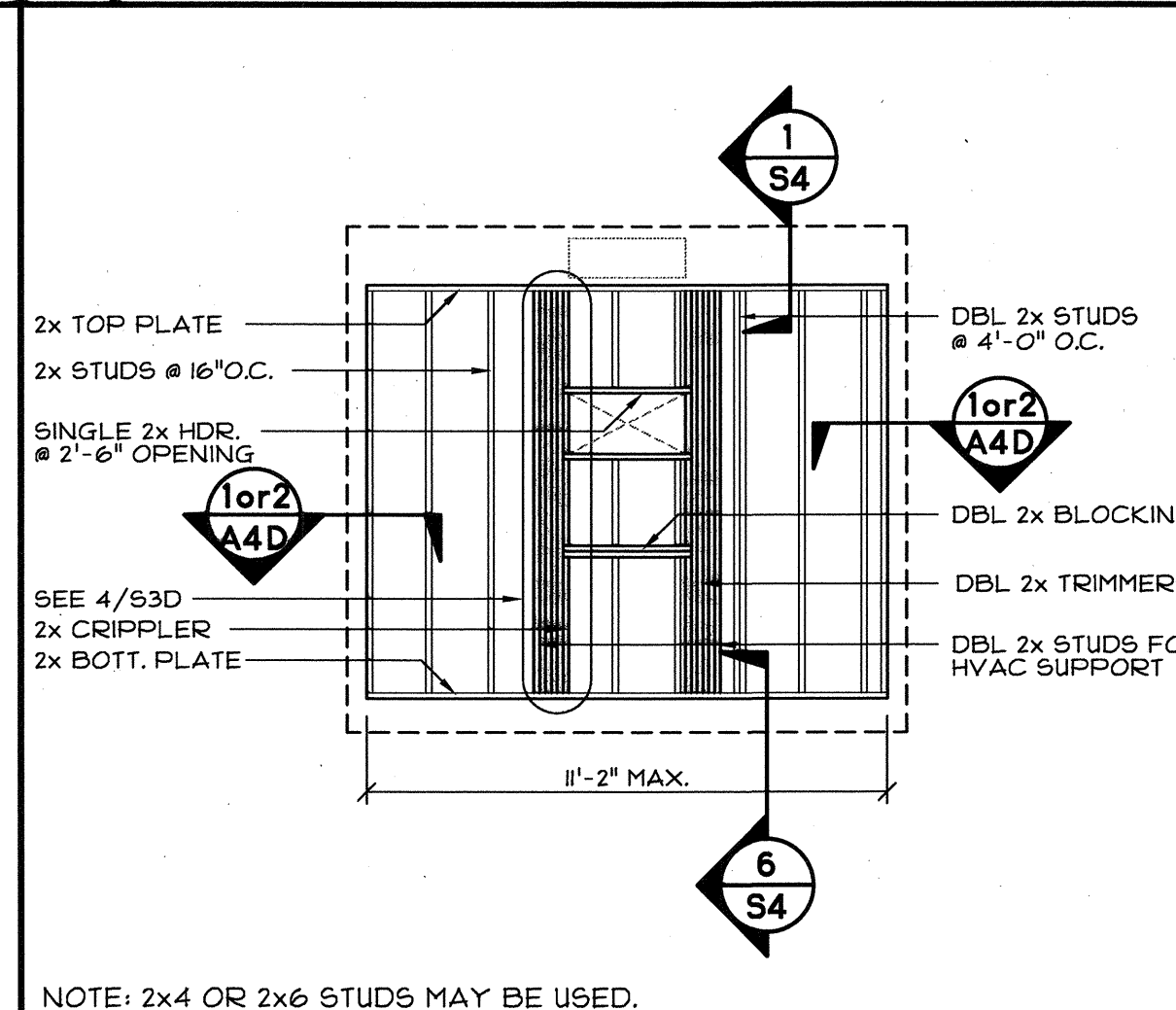
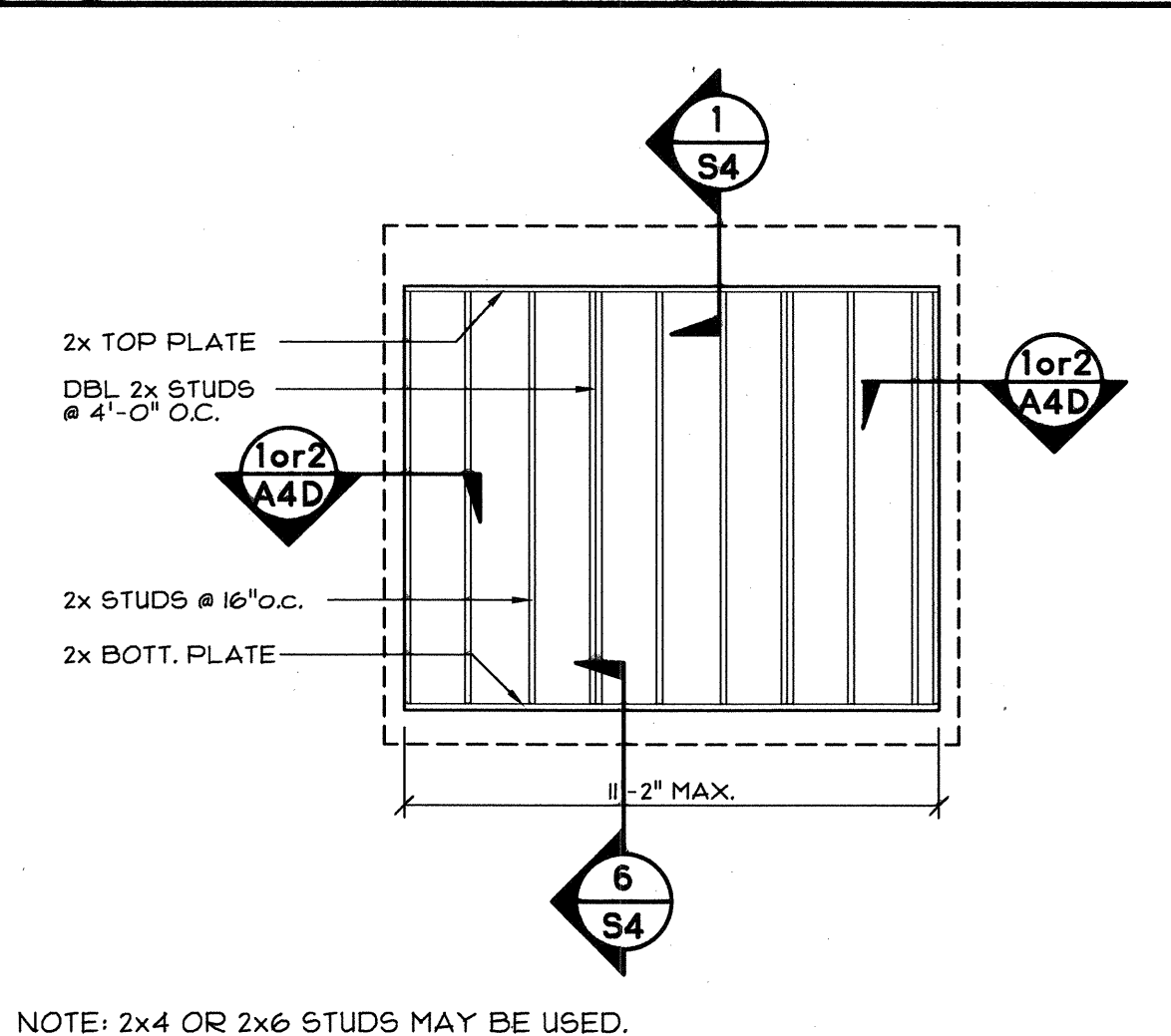
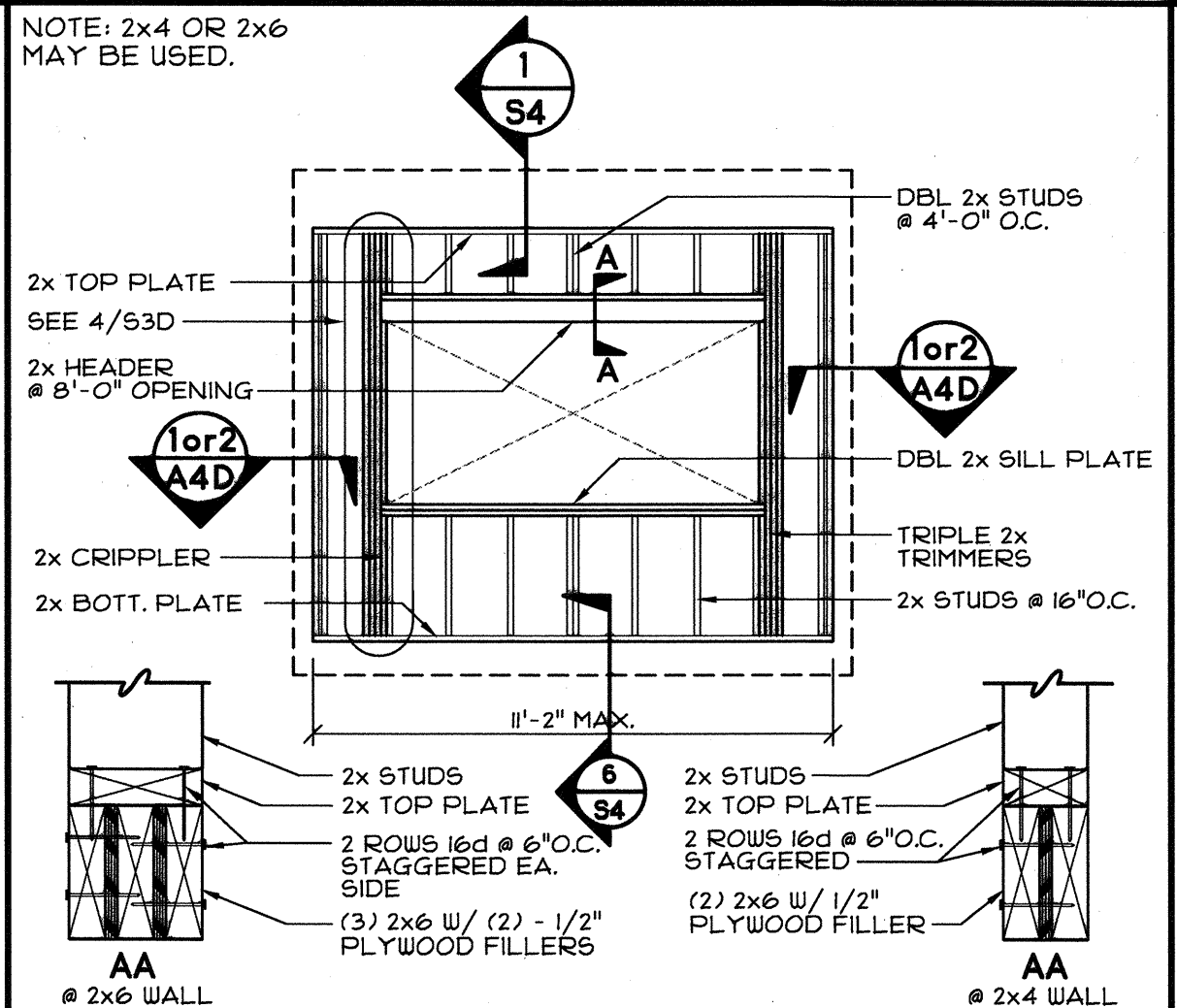
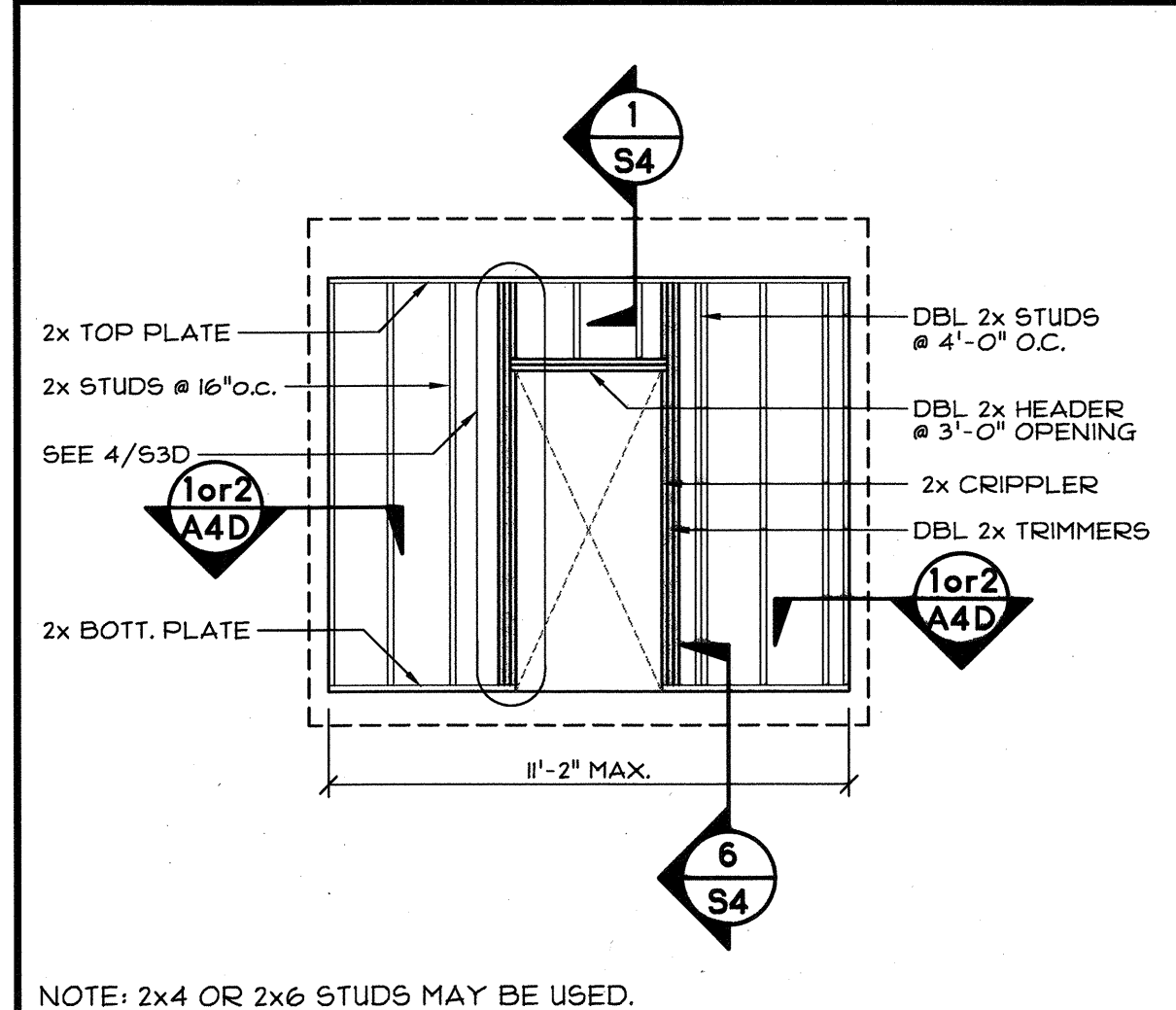


3 **TYPICAL SIDEWALL FRAMING ELEVATION**  
SCALE: 1/4"=1'-0"

4 **STUD NAILING DETAIL**  
SCALE: 1"=1'-0"

5 **WALL FRAMING - INTERIOR HVAC**  
SCALE: 1/4"=1'-0"

6 **END FRAME ELEVATION**  
SCALE: 1/4"=1'-0"



7 **WALL FRAMING - EXTERIOR DOOR**  
SCALE: 1/4"=1'-0"

8 **WALL FRAMING - EXTERIOR WINDOW**  
SCALE: 1/4"=1'-0"

9 **WALL FRAMING - TYP. 12'-0" WALL**  
SCALE: 1/4"=1'-0"

10 **WALL FRAMING - EXTERIOR HVAC**  
SCALE: 1/4"=1'-0"

DIVISION OF THE STATE ARCHITECT

REVISIONS:

REV	DATE

JOB No.: 12-19  
DRAWN BY: JM  
DATE: 07-18-12

THIS MODULAR BLDG. HAS BEEN ENGINEERED BY A REGISTERED STRUCTURAL ENGINEER AND PREVIOUSLY REVIEWED & APPROVED BY THE DIVISION OF THE STATE ARCHITECT, FIRE & LIFE SAFETY AND ACCESS COMPLIANCE SECTION

CONFIDENTIAL MATERIAL—THESE DOCUMENTS ARE THE PROPERTY OF AND ARE NOT TO BE REPRODUCED OR DISTRIBUTED WITHOUT FULL KNOWLEDGE AND WRITTEN CONSENT FROM ENVIROPLEX, INC. © COPYRIGHT ENVIROPLEX, INC. (ALL DRAWINGS PREPARED BY ENVIROPLEX, INC.)

VARIABLE SLOPE ROOF  
LONGITUDINAL BUILDING SECTION,  
WALL FRAMING ELEVATIONS, END  
FRAME ELEVATION, NAIL SCHEDULE

**S3D**