

**1 LONGITUDINAL BUILDING SECTION**  
SCALE: 1/2" = 1'-0"

**WALL FRAME FASTENING**

WALL PANEL TOP PLATE TO 3" x 15" 19" PERIMETER ROOF BEAM:

WALL PANEL BOTTOM PLATE TO FLOOR BEAM:

WALL PANEL SIDE STUDS TO T&S 5x5 COLUMNS:

TOP AND BOTTOM PLATE TO STUDS AND KING STUDS:

DOUBLE STUDS, TRIMMERS, SILLS, AND CRIPPLES FACE NAILED:

CRIPPLES, TRIMMERS END NAILED TO PLATES AND SILLS:

CRIPPLES, TRIMMERS TOE NAILED TO HEADERS:

ALL HANGERS, STRAPS, CLIPS ETC.:

1-3/8" x 2" LAG SCREWS TO PENETRATE THRU ROOF BEAM AND TOP PLATE @ 24" O.C. MAX.

#12-24 x 2-1/2" S.D.S. @ 32" O.C. THRU BOTTOM PLATE AND TO PENETRATE FLOOR BEAM.

#12-24 x 2-1/2" S.D.S. @ 16" O.C. THRU SIDE STUD TO PENETRATE THRU STEEL COLUMN.

2-13# x 3-1/4" LONG MACHINE NAILS EA. END

1-13# x 3-1/4" LONG MACHINE NAIL @ 12" O.C.

2-13# x 3-1/4" LONG MACHINE NAILS EA. END

2-13# x 3-1/4" LONG MACHINE NAILS ON SIDE AND ONE NAIL OPPOSITE SIDE CENTERED.

TO BE NAILED AS PER MANUFACTURERS SPECIFICATIONS

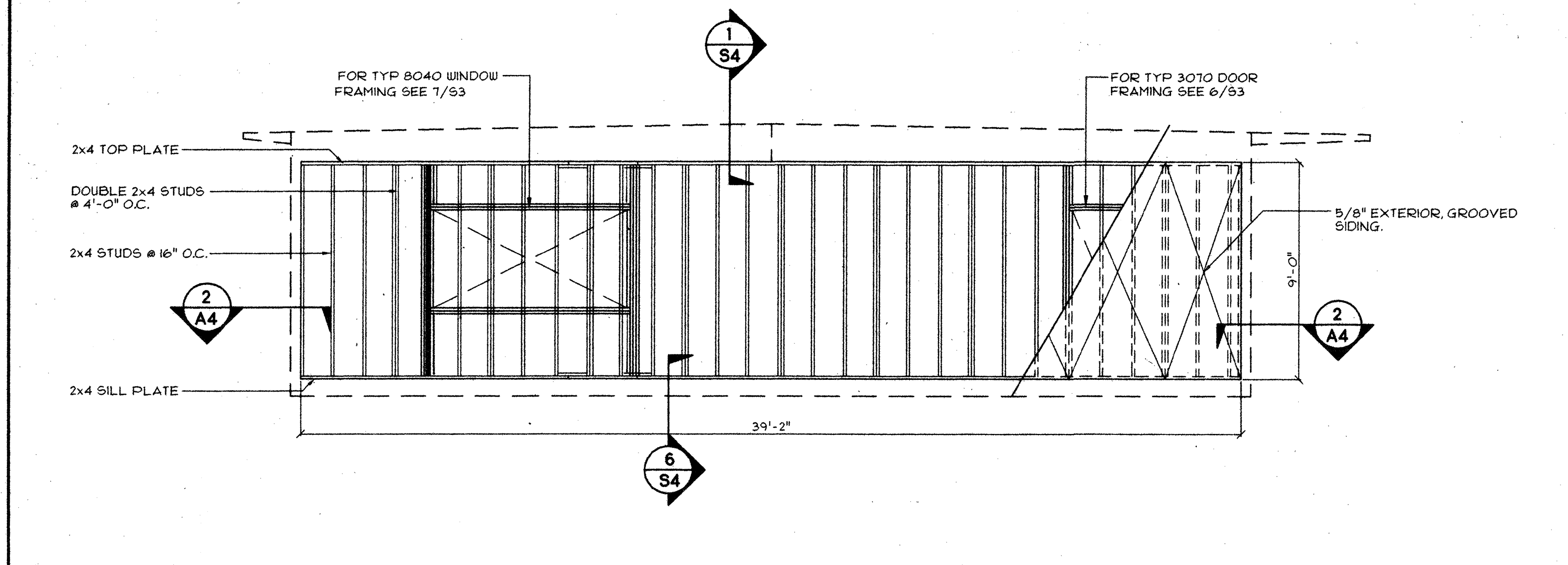
**SHEATHING / PLYWOOD NAILING & NOTES**

- DO NOT CRUSH PLYWOOD FACE PLY (OUTER VENEER LAYER) BY OVER DRIVING SCREWS, MACHINE OR HAND NAILS.
- UNDER DRIVEN NAILS SHALL BE CORRECTED BY HAND SET.
- REMOVE NAILS DRIVEN THAT MISS THE FRAMING OR SUPPORT. PROVIDE CORRECTLY SPACED PENETRATION OF ALL NAILING.
- ALL CORRECTIVE NAILING SHALL BE DONE BY HAND.
- 13# x 3-1/4" MACHINE NAILS EQV. TO 16d BOX NAILS (UNCOATED)

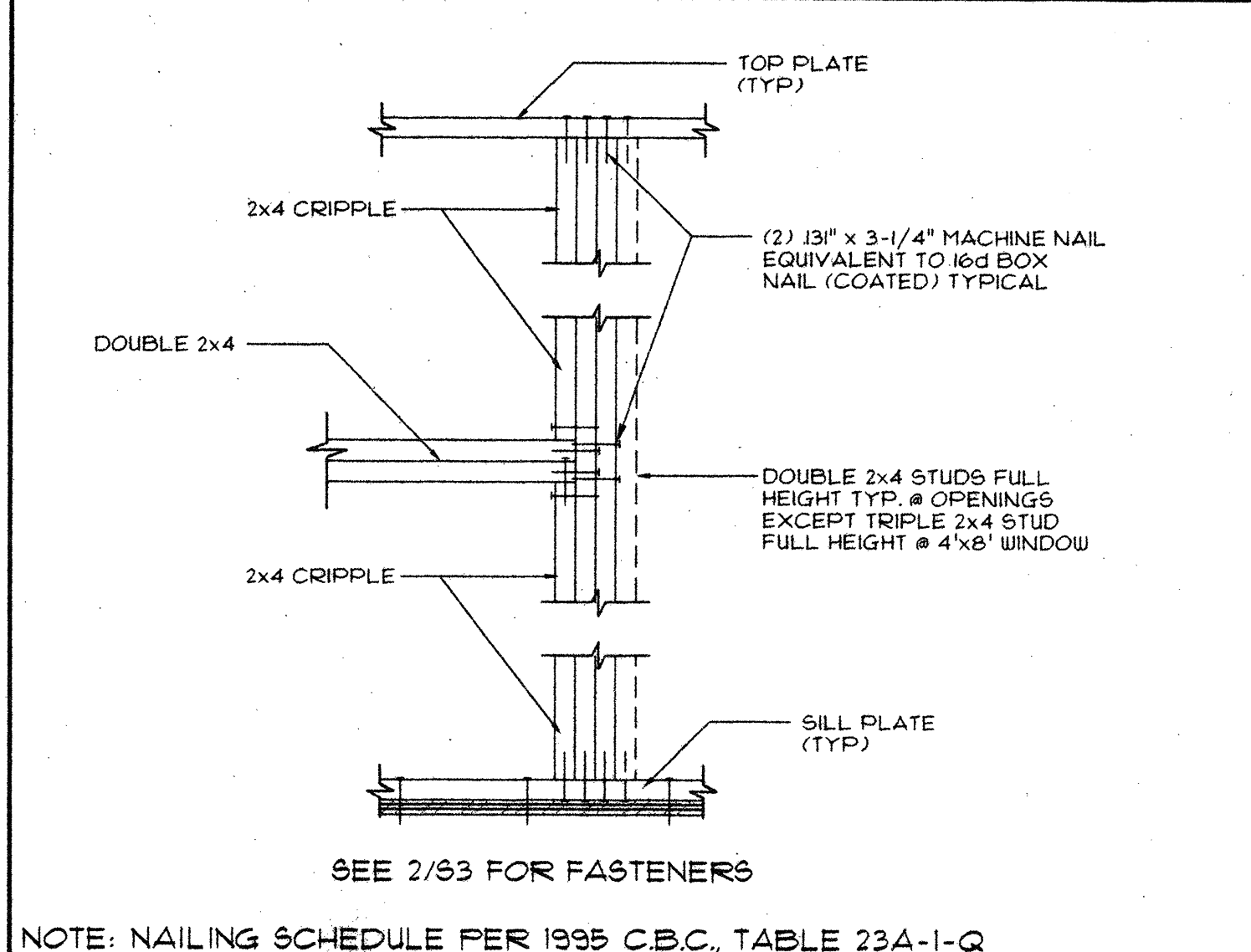
<b>FLOOR</b>	1-1/8" APA RATED T&G STURDI-FLOOR TO BEAM & JOISTS	SHEET EDGES	144 x 1-3/4" PIN @ 6" O.C.
		FIELD	144 x 1-3/4" PIN @ 10" O.C. (ICBO 4144)
<b>ROOF</b>	15/32" APA RATED PLYWOOD TO PURLINS & BEAMS (USE 19/32" @ SINGLE PLY ROOF)	SHEET EDGES	144 x 1-3/4" PIN @ 6" O.C.
		FIELD	144 x 1-3/4" PIN @ 12" O.C. (ICBO 4144)
<b>SIDING</b>	T-11 EXTERIOR SIDING TO 2x4 STUDS	SHEET EDGES	13# x 2-1/2" @ 6" O.C. COATED NAILS
		FIELD	13# x 2-1/2" @ 12" O.C. COATED NAILS
<b>DRYWALL</b>	1/2" GYP. BOARD TO 2x4 STUDS	SHEET EDGES	12# x 1-1/2" COATED NAILS @ 6" O.C.
		FIELD	12# x 1-1/2" COATED NAILS @ 12" O.C.
<b>CANOPY SOFFIT</b>	1/2" APA RATED SHEATHING	SHEET EDGES	#8 x 1" S.D.S. @ 6" O.C.
		FIELD	#8 x 1" S.D.S. @ 12" O.C.

S.D.S. = FULLY THREADED SELF DRILLING SCREW.

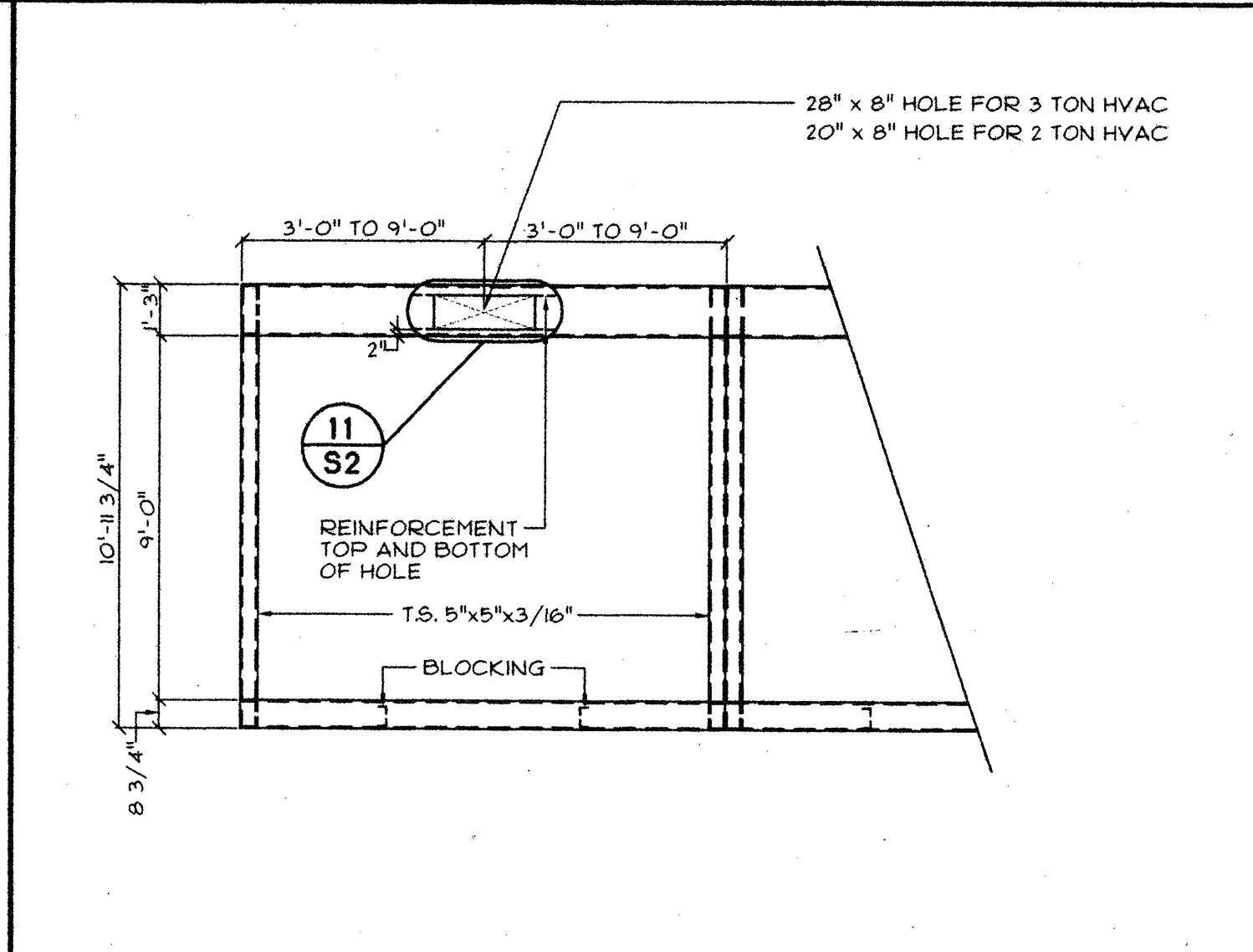
**2 NAILING SCHEDULE**



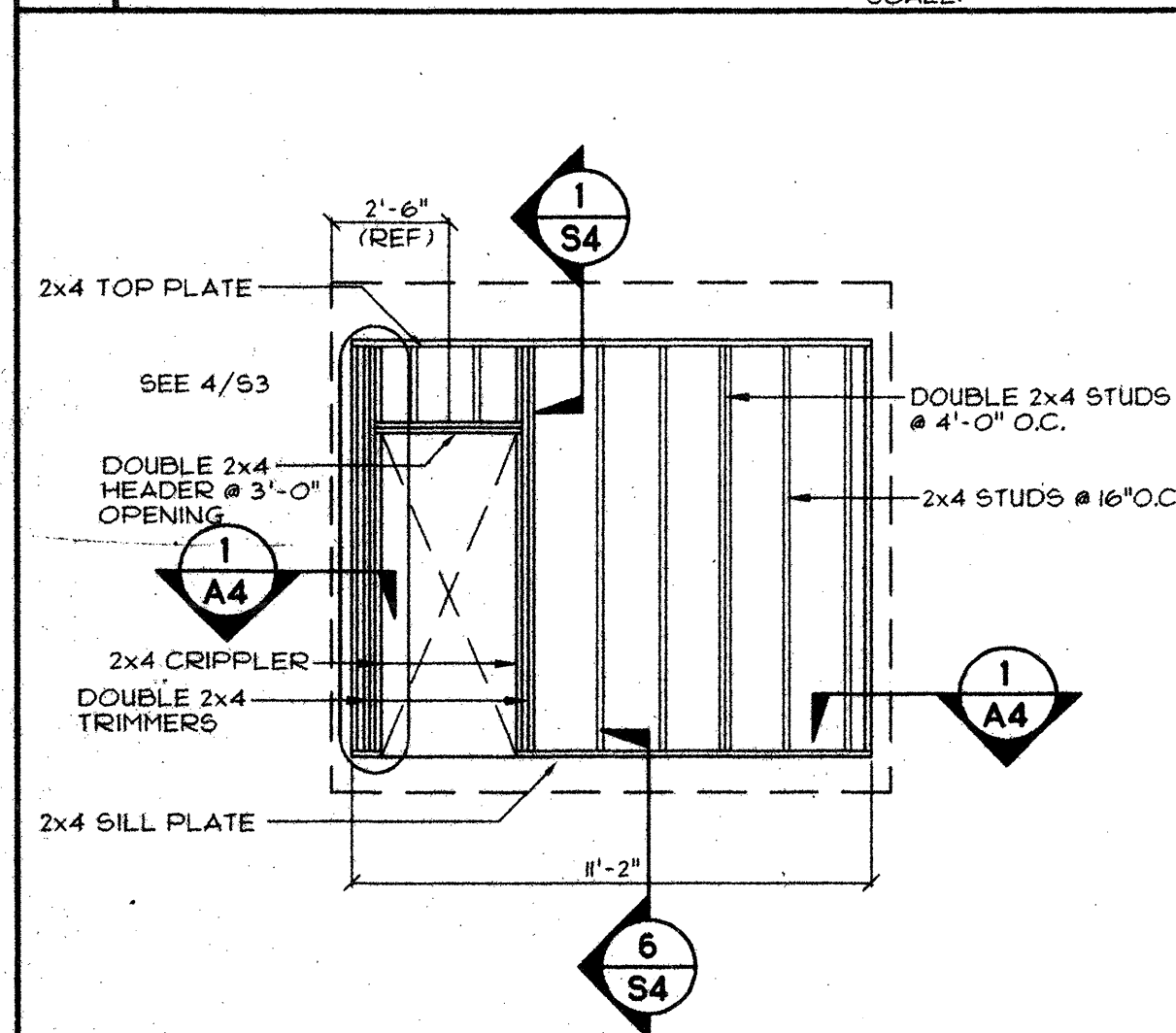
**3 WALL FRAMING ELEVATION @ 40'-0" SIDE**  
SCALE: 1/4" = 1'-0"



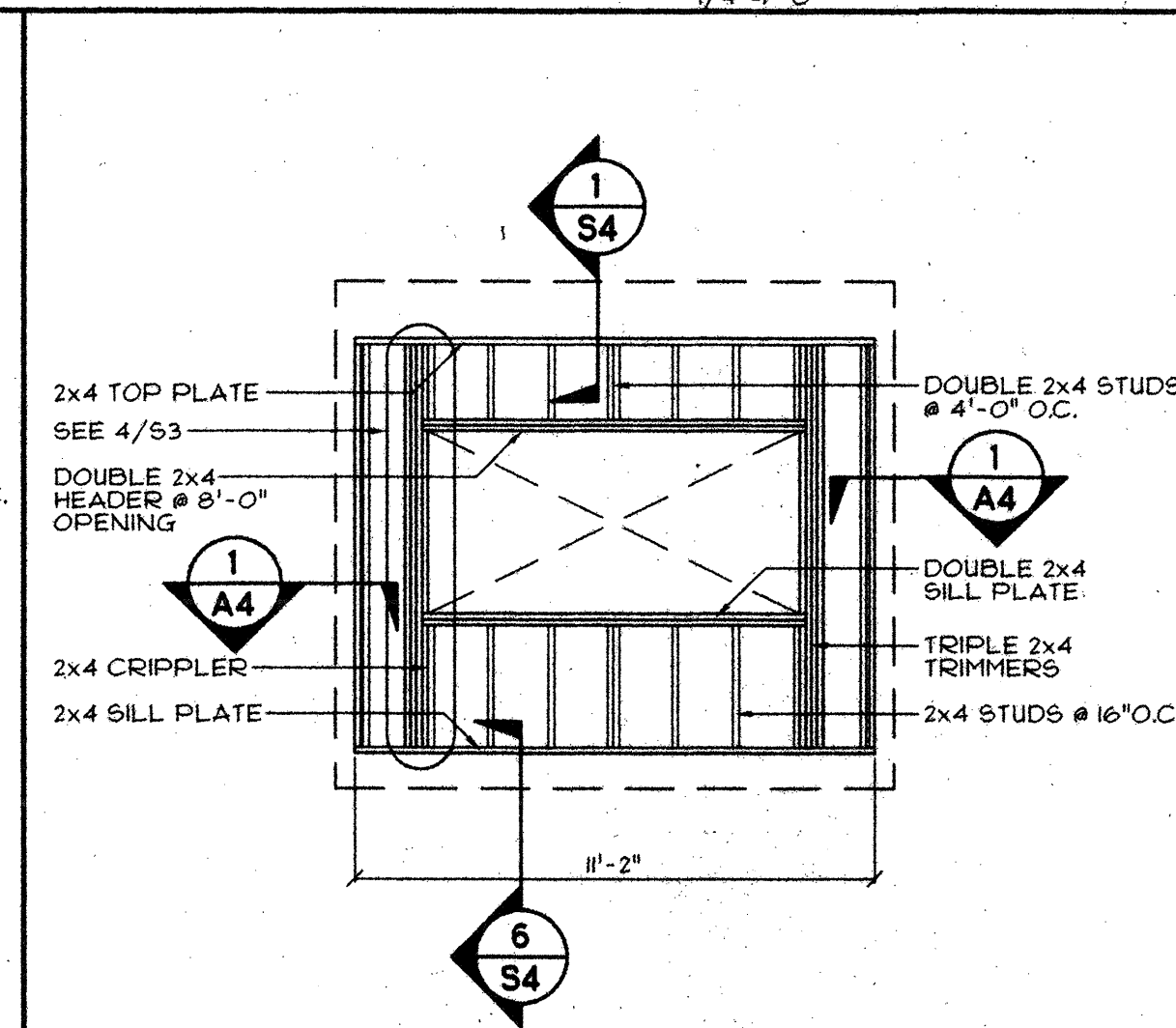
**4 NAILING DETAIL**  
SCALE: 3/8" = 1'-0"



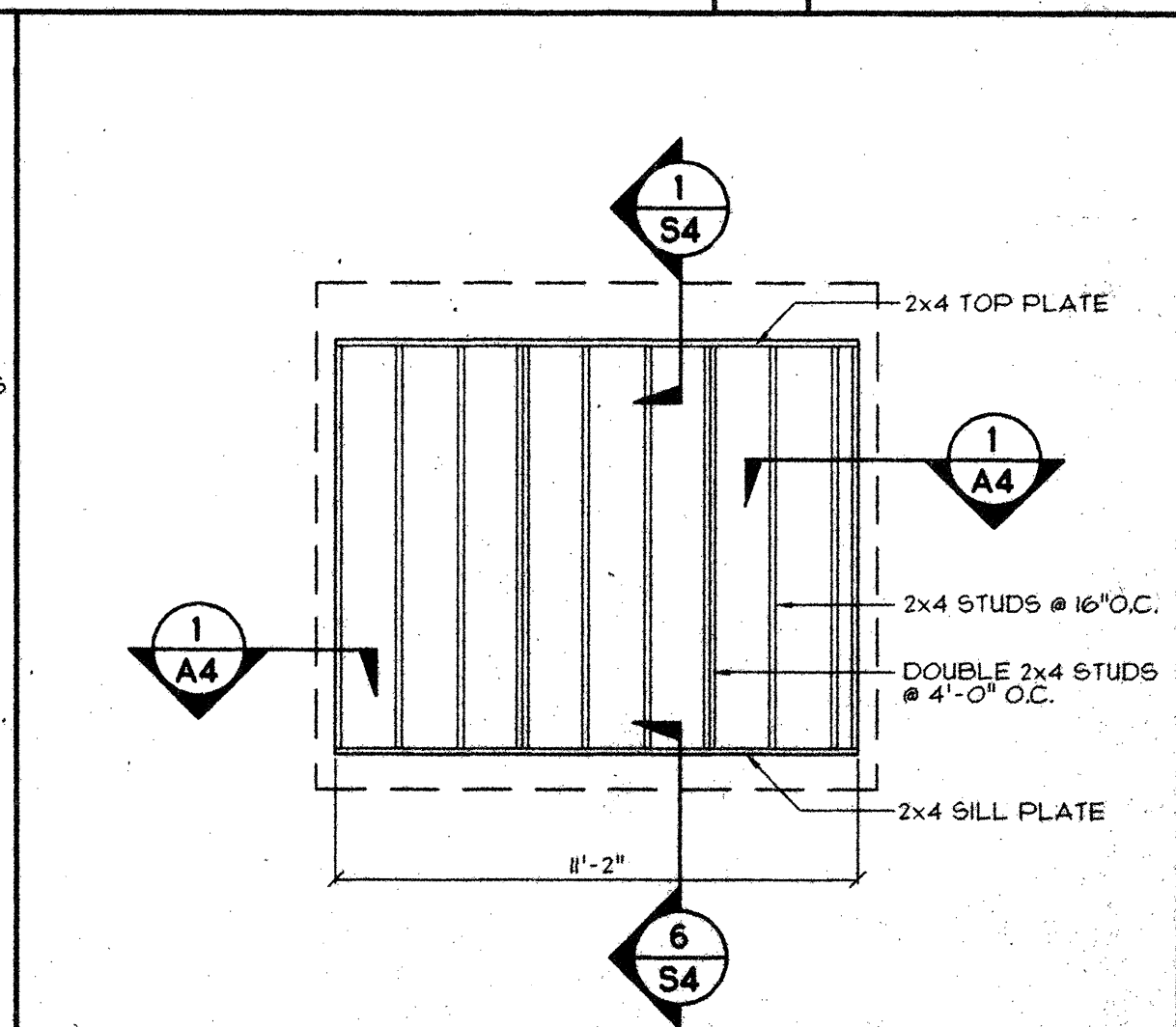
**5 END FRAME ELEVATION**  
SCALE: 1/4" = 1'-0"



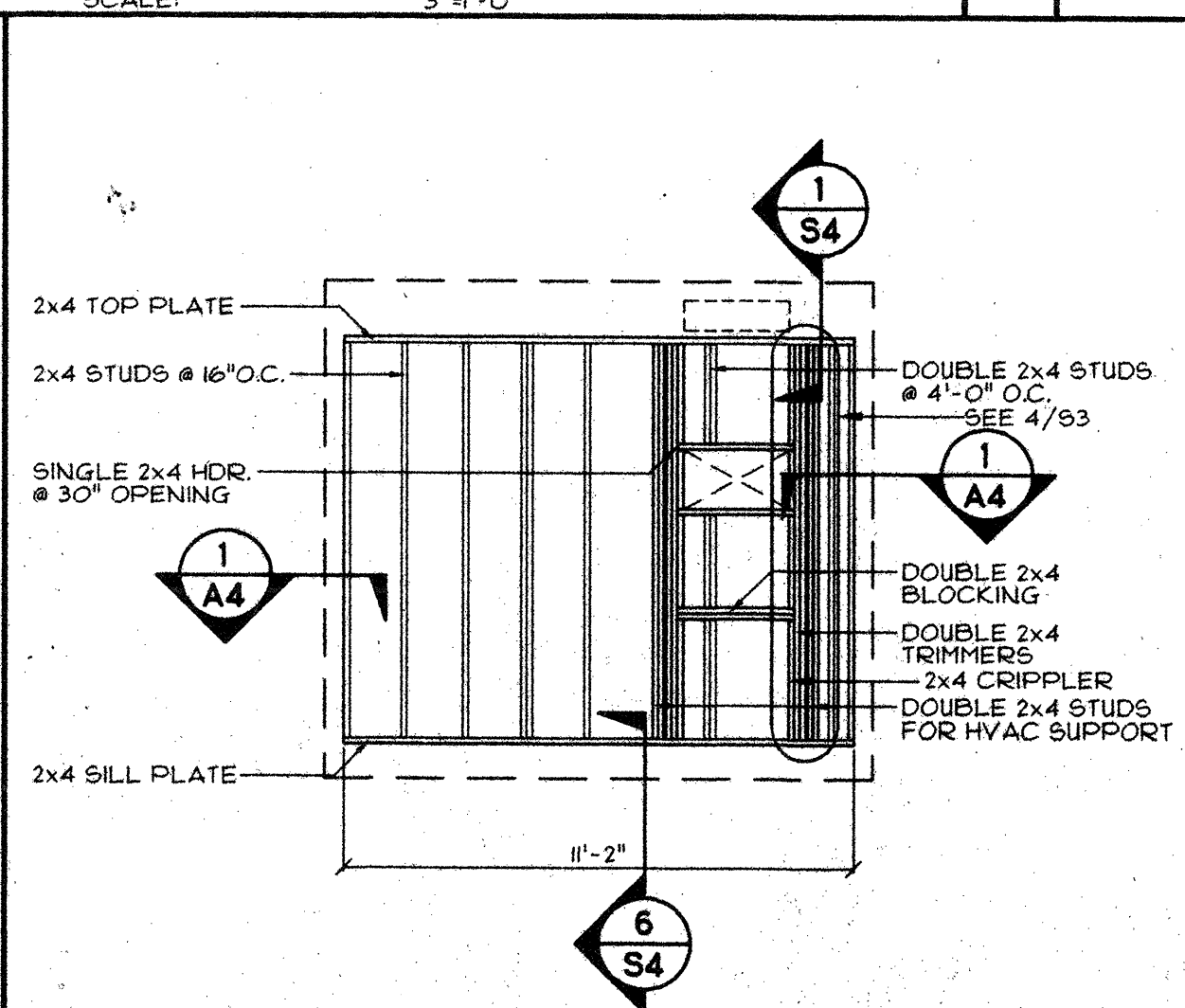
**6 DOOR WALL FRAMING**  
SCALE: 1/4" = 1'-0"



**7 WINDOW WALL FRAMING**  
SCALE: 1/4" = 1'-0"



**8 END WALL FRAMING**  
SCALE: 1/4" = 1'-0"



**9 HYAC WALL FRAMING - DUCTED**  
SCALE: 1/4" = 1'-0"

OFFICE OF THE STATE ARCHITECT

OFFICE OF REGULATION SERVICES

REVISION DATE: BY:

DATE:

DESIGN CRITERIA

ROOF: DEAD LOAD - 8.0 PSF  
ROOF: LIVE LOAD - 20.0 PSF (SNOW)

FLOOR: DEAD LOAD - 8.0 PSF  
FLOOR: LIVE LOAD - 50.0 PSF

WALLS: DEAD LOAD - 8.0 PSF  
WIND: 80 MPH; EXP. C - 25.5 PSF (PER DSA IR 23-16)  
SEISMIC: ZONE 4, R<sub>w</sub>=6, C=2.75

CONFIDENTIAL MATERIAL - THESE DOCUMENTS ARE THE PROPERTY OF AND ARE NOT TO BE REPRODUCED OR DISTRIBUTED WITHOUT FULL KNOWLEDGE AND WRITTEN CONSENT FROM ENVIROPLEX, INC.  
© COPYRIGHT 1995 ENVIROPLEX, INC. (DRAWINGS PREPARED BY ENVIROPLEX, INC.)

DSA APPLICATION NO.

**10 APPROVALS**

**JH Lawder, Inc.**  
Structural Engineers  
621 1/2 STREET  
MADISON, CA 95354  
(925) 521-1143  
(925) 521-1146

**ENVIROPLEX, INC.**  
4777 E. CARPENTER ROAD STOCKTON, CA 95215  
36" x 40" RELOCATABLE CLASSROOM FOR SKYLINE COLLEGE CHILD DEVELOPMENT CENTER

LONGITUDINAL BUILDING SECTION  
WALL FRAMING-FRAME ELEVATIONS  
NAILING DETAIL & SCHEDULE

DATE: \_\_\_\_\_

DESIGN CRITERIA

ROOF: DEAD LOAD - 8.0 PSF  
ROOF: LIVE LOAD - 20.0 PSF (SNOW)

FLOOR: DEAD LOAD - 8.0 PSF  
FLOOR: LIVE LOAD - 50.0 PSF

WALLS: DEAD LOAD - 8.0 PSF  
WIND: 80 MPH; EXP. C - 25.5 PSF (PER DSA IR 23-16)  
SEISMIC: ZONE 4, R<sub>w</sub>=6, C=2.75

CONFIDENTIAL MATERIAL - THESE DOCUMENTS ARE THE PROPERTY OF AND ARE NOT TO BE REPRODUCED OR DISTRIBUTED WITHOUT FULL KNOWLEDGE AND WRITTEN CONSENT FROM ENVIROPLEX, INC.  
© COPYRIGHT 1995 ENVIROPLEX, INC. (DRAWINGS PREPARED BY ENVIROPLEX, INC.)

DSA APPLICATION NO.