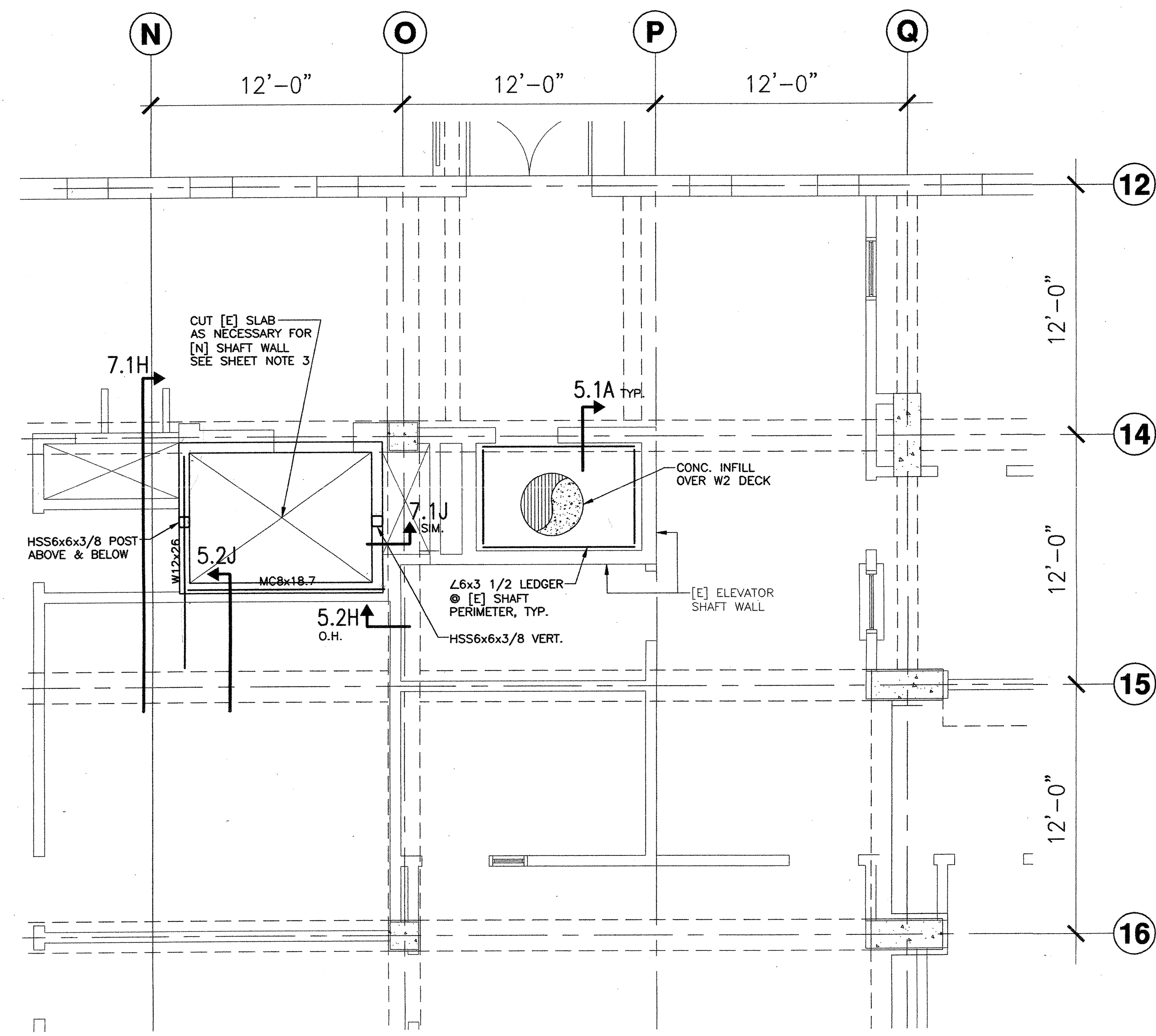
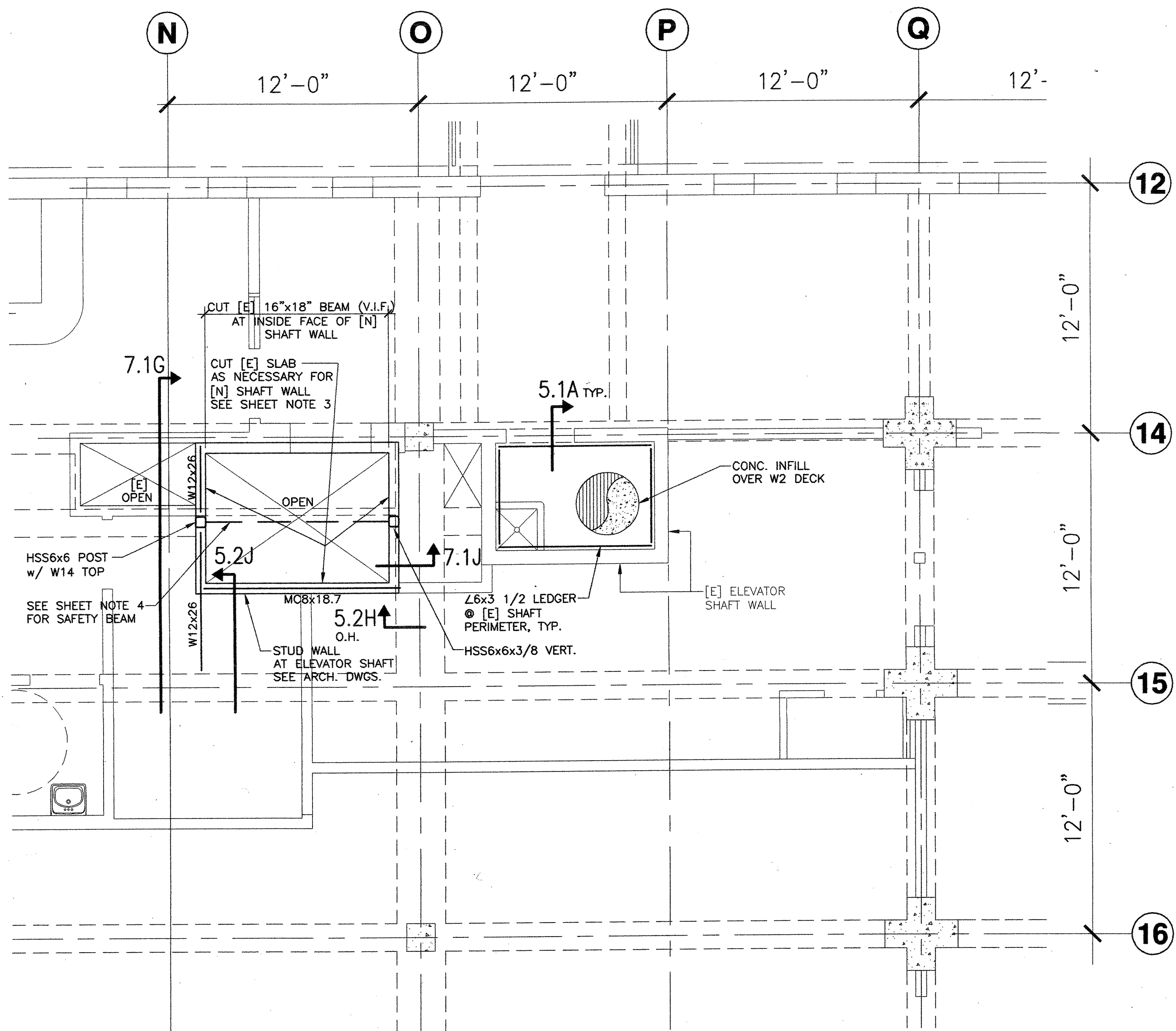


2.5A FIRST FLOOR - PARTIAL FRAMING PLAN 1/4"=1'-0"



2.5B SECOND FLOOR - PARTIAL FRAMING PLAN 1/4"=1'-0"



2.5C THIRD FLOOR - PARTIAL FRAMING PLAN 1/4"=1'-0"

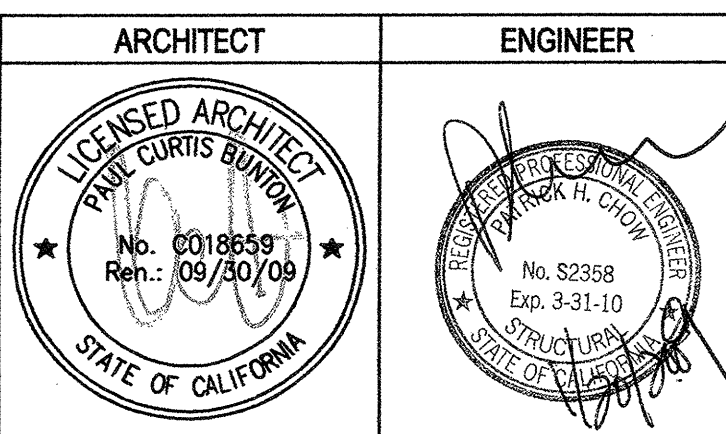
SHEET NOTES

1. REFER TO ARCHITECTURAL AND MECHANICAL DRAWINGS FOR LOCATIONS OF EQUIPMENT, SIZE OF OPENING, CURB DETAILS.
2. SEE GENERAL NOTES, EXISTING CONSTRUCTION DIVISION, ITEM "C" FOR NEW PENETRATIONS REQUIREMENTS.
3. COORDINATE WITH ARCHITECTURAL DRAWINGS AND ELEVATOR VENDOR ALL DIMENSIONS AND ALL REQUIREMENTS PRIOR TO START OF CONSTRUCTION.
4. FOR SAFETY BEAM SEE 2.1C



architecture
planning
interiors

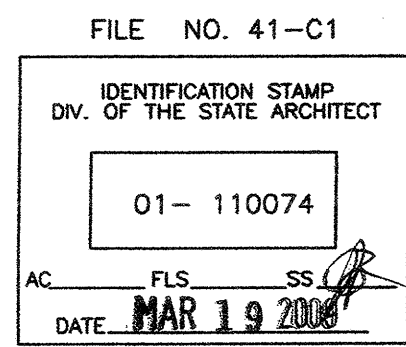
Bunton Clifford Associates, Inc.
210 Hammond Ave.
Fremont, California 94539
[T] 510.445.1000
[F] 510.445.1005
www.BCAincOnline.com



- GENERAL NOTES**
1. This sheet is part of a set and is not to be used alone.
 2. This sheet is not to be used for construction unless the architect's stamp and signature appear on the drawings and the status box indicates drawings have been released for construction.
 3. These plans and prints, thereof, as instruments of service, are owned by the architect and are for use on this project only. Reproduction and/or distribution without the prior written consent of the architect is forbidden.
 4. Copyright Bunton Clifford Associates, 2007

REVISIONS	DATE

DRAWING STATUS	DATE
<input type="radio"/> DSA PLAN CHECK	
<input type="radio"/> DSA BACK CHECK	
<input type="radio"/> BIDDING (BID #86993)	
<input type="radio"/> CONSTRUCTION	



BUILDINGS 5 & 6 RENOVATIONS
San Mateo County Community College District

DSA BACK-CHECK

CAÑADA COLLEGE
4200 Farm Hill Boulevard
Redwood City, CA 94061

INTERIOR ELEVATOR
PARTIAL FRAMING PLANS

Date	12/31/08	Drawing Number	
Scale	AS NOTED	Project Number	07013

S2.5