



CALIFORNIA COMMUNITY COLLEGES  
CHANCELLOR'S OFFICE

2006 - 2008 Partnership.

\*\*\* DRAFT \*\*\*

A Unique Opportunity

# California Community College Partnership Workshop

Date: October 11, 2005



# Agenda

---

- Welcome and Introductions: Fred Harris and Chris Riley
- Program Background: Frank Spasaro
- Overview of CCC Program: Fred Harris and Chris Riley
- IOU Resources: Chris Riley
- Program Procedures: Hob Issa
- Project Screening and Evaluation Criteria: Randall Higa
- Forms: Randall Higa
- Timelines for Submittals: Randall Higa
- Customer Testimony: Gary Nellesen
- Questions and Answer: All

# Welcome and Introductions

---

- **Chris Riley** (PG&E): (415)973-0279, [cmr5@pge.com](mailto:cmr5@pge.com)
- **David Hather** (PG&E): (916) 386-5007, e-mail: [dth2@pge.com](mailto:dth2@pge.com)
- **Frank Spasaro** (Sempra): (213) 244-3648,  
e-mail: [fspasaro@semprautilities.com](mailto:fspasaro@semprautilities.com)
- **Randall Higa** (Sempra): (213) 244-3661, e-mail: [rhiga@semprautilities.com](mailto:rhiga@semprautilities.com)
- **Michael Lo** (SCE): (626) 302-3818, e-mail: [michael.lo@sce.com](mailto:michael.lo@sce.com)
- **Lisa Hannaman** (SCE): (714) 895-0616, e-mail: [lisa.hannaman@sce.com](mailto:lisa.hannaman@sce.com)
- **Hob Issa** (Lincus Building Systems): (949) 244-6528,  
e-mail: [hissa@lincusbldgsystems.com](mailto:hissa@lincusbldgsystems.com)

# Program Background

---

- Successful Statewide and Local Government Partnership Programs for 2004-2005.
- Expanded to Community Colleges for 2006-2008. Unique Opportunity to leverage the \$12 Billion of funding being spent on Facilities and Infrastructure Statewide.
- Implementation of Projects will be focused in three main areas – Retrofit, New Construction, and Retro-Commissioning

# Overview of CCC Program

## *What is the CCC-IOU EE Partnership?*

- A unique energy efficiency program; administered by the four IOUs. The program is intended to:
  - Improve CCC facilities and lowering operating costs at campuses statewide.
  - Allow the CCC to leverage the local bond dollars and statewide project funding.
  - Consist of several components focused around Energy Efficiency and Energy Education. The components include:
    - New Construction and Retrofit Projects
    - Retro-Commissioning Projects
    - Training and Education Program
    - Emerging Technologies
  - Through this incentive program, the utilities will offer administrative and technical support. Utilities will be responsible for verifying the savings and the project at completion.
  - This program is funded by California ratepayers and administered by the four IOUs under the auspices of the California Public Utilities Commission (CPUC).

# Overview of CCC Program (Con't)

---

## *What is the Timeline?*

- The Program will run from January 2006 to December 2008.
- Project applications for the Communities Colleges will begin on October 15<sup>th</sup> and run until November 15<sup>th</sup> of 2005.
- Projects will go through two form processes. Form One will be the Initial Project Proposal and Form Two will be the Detailed Project Proposal.
- The Project Forms will be applicable to all Retrofit, New Construction, and Retro-Commissioning Projects
- Project implementation will begin January 1, 2006.

# Overview of CCC Program (Con't)

---

## *Why Should CCC Participate?*

- CCC has a tremendous opportunity to lower its operating cost and achieve permanent load reduction by improving energy efficiency in new and existing facilities.
- Participation will assist the CCC in complying with the Governor's Executive Order S-20-04 which requires state agencies and departments to reduce energy purchases by 20% over the next ten years.
- Previous energy bond programs, and loan programs have not met the unique needs of the CCC; the financial and administrative terms of a partnership can be customized to meet these needs.
- The Program is an opportunity to directly access public-good funds on a large scale through a proven and efficiently operated program.
- Up to \$36 million of IOU project funding will be made available this cycle, with additional funding possible in future cycles based on the program's success.
- Funding earmarked for the CCC will be allocated to other programs if the CCC does not act on this unique opportunity to seize their share of the funding.

# IOU Resources

---

- These are services and resources that are available through all the Investor Owned Utilities and would be included as opportunities for the districts/campuses through the partnership:
  - Technical assistance to identify potential projects
  - Assistance in calculations of energy savings to meet project threshold
  - Audits of Facilities
  - Design Assistance for new construction projects
  - Assistance in Sustainable Design
  - Energy Centers for technology and training resources
  - Additional Financial Incentives to help offset investments in Energy Efficiency
  - Local Account Representative assistance (see attached list for names and numbers)

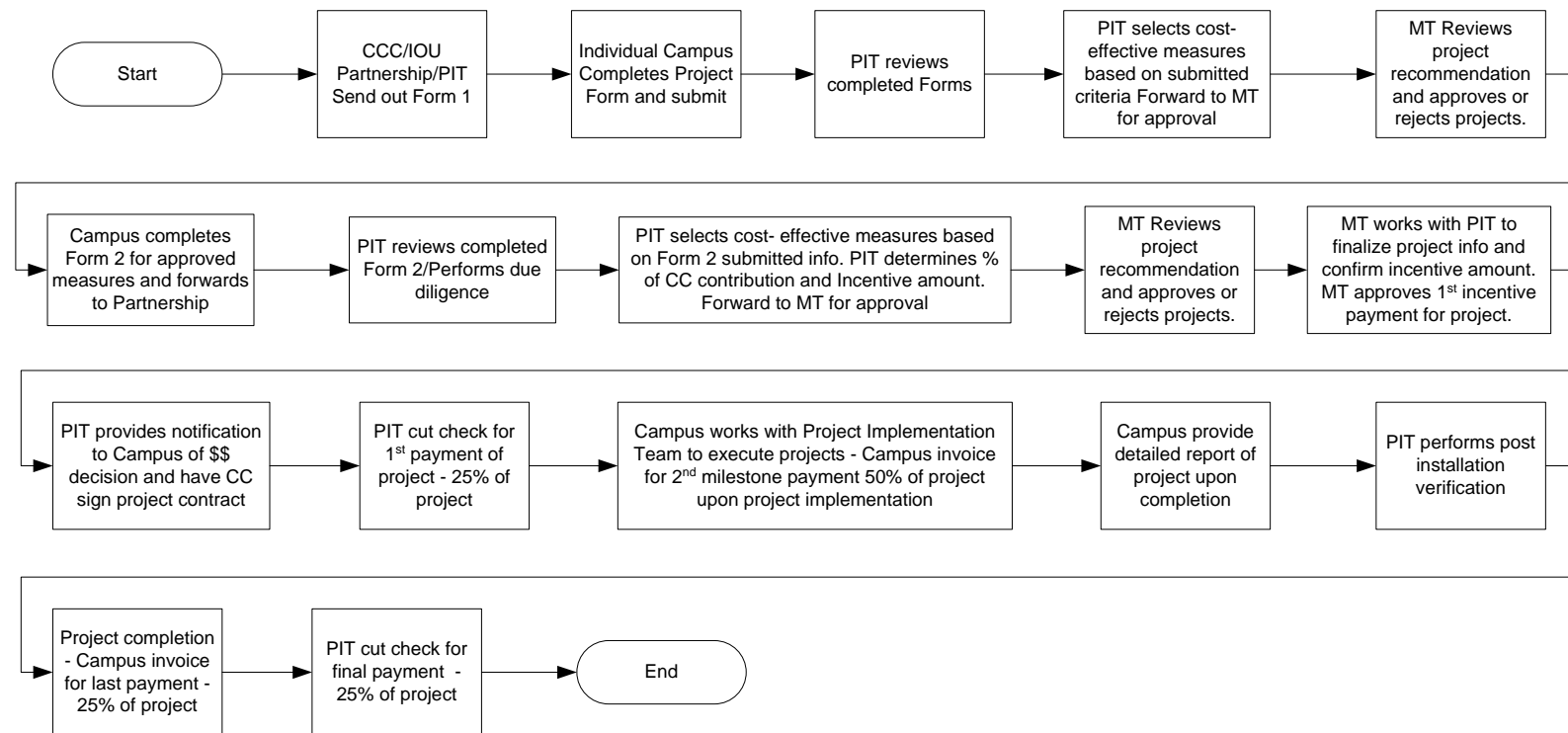


# Program Procedures

## EE Project Information Submission Process

CCC/IOU EE Partnership Program  
Monday, October 10, 2005

DRAFT



Note:

1. CCC - California Community College
2. IOU - Investor Owned Utilities (SCE, PG&E, SDG&E and SCG).
3. MT - Management Team for CCC/IOU EE Partnership Program
4. PIT - Program Implementation Team for CCC/IOU EE Partnership Program

# Project Screening Criteria

---

## *Minimum Requirements*

- Must be served by one or more of the four IOUs
- Persistent kWh savings, therm savings, peak kW reduction
- Project simple payback period (under 6 years on retrofit; longer for new construction, shorter for RCx)
- Campus co-funding required—minimum of 20%
- IOU funding approximately 24 cents/kWh, \$1.00/therm saved
- Project schedule meets program needs; completion by end of 2008 or sooner
- Ability to deliver scope on budget and on schedule
- Projects include retrofits, Retro-commissioning (RCx), new construction
- Double dipping not allowed
- New construction limitations—SBD coordination
- Liability insurance requirements
- Deadline for initial submittals: October 15 - November 15, 2005

# Evaluation Criteria

---

## *Evaluation/Prioritization Criteria*

- Favor projects that can be completed or show substantial completion in a short time
- Favor projects with better cost-effectiveness
- Favor projects with shorter payback periods
- Favor retrofit & NC projects that are commissioned
- Favor comprehensive projects over simple retrofits
- Favor projects with better project management and staffing levels
- Districts/Campuses receiving high levels of funding will be less favored for future projects (“spreading of the wealth”)
- Favor projects with more complete analysis, audits and studies

# Forms

---

- See Attached Form #1
- See Attached Form #2

# Timeline for Submittals

---

- Initial Project Submittal Period – October 15-November 15, 2005
- Form 1 Projects will be reviewed by the Project Implementation Team every two weeks
- Form 1 Projects that have been approved will have three weeks to provide their information and documentation for Form 2.
- The Project Implementation Team will then evaluate the Form 2 Projects every two to three weeks for final approval to move forward.
- Within a week after the Project Implementation Team approves Form 2 Projects and submits the projects to Management Team, the Management Team will evaluate the project for Final Approval.
- One Week after the Management Team has approved the project, the IOU will get you the Project Contract to sign by the Campus/District. Then work may begin.



# Customer Testimony

---

- Mt. Sac – Customer Testimony



# Question and Answer

---