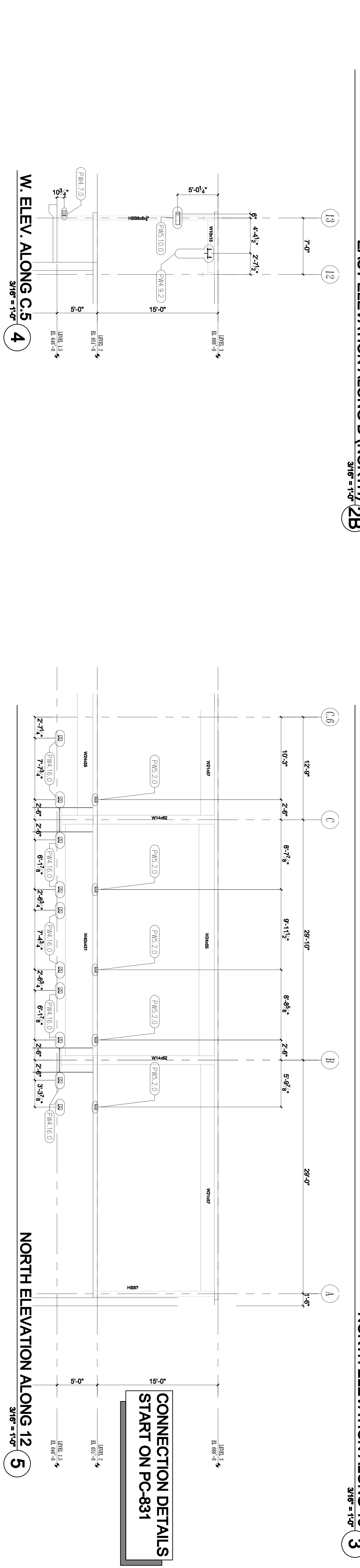
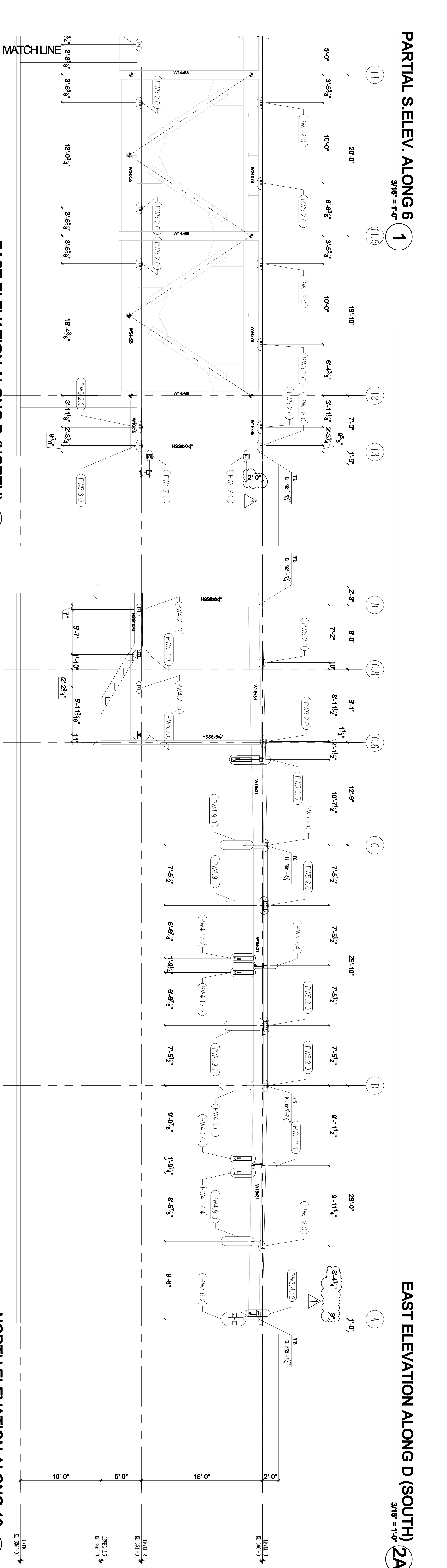
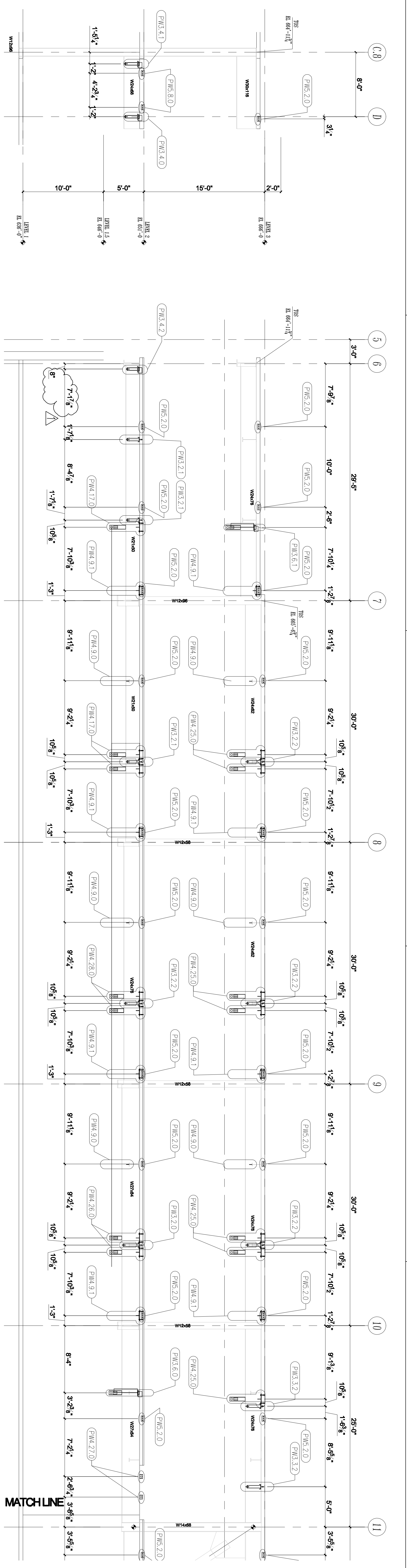


**WILLIS TOWERS WATSON CONSTRUCTION PRODUCTS CO., INC.**  
 2281 SAN JUAN AVENUE, SAN JUAN BAYVIEW, CALIFORNIA  
 TEL: 415.494.2000 FAX: 415.494.2001

NO.	REVISIONS	DATE
1	ISSUE FOR PERMIT	02/08/11
2	100% SCHEMATIC DESIGN SUBMITTAL	02/08/11
3	90% DESIGN DEVELOPMENT SUBMITTAL	02/08/11
4	100% DESIGN DEVELOPMENT SUBMITTAL	02/08/11
5	PERMITS DEVELOPMENT EVALUATION	02/08/11
6	PERMITS DEVELOPMENT EVALUATION	02/08/11
7	PERMITS DEVELOPMENT EVALUATION	02/08/11
8	PERMITS DEVELOPMENT EVALUATION	02/08/11
9	PERMITS DEVELOPMENT EVALUATION	02/08/11
10	PERMITS DEVELOPMENT EVALUATION	02/08/11
11	PERMITS DEVELOPMENT EVALUATION	02/08/11



**CONNECTION DETAILS  
 START ON PC-831**

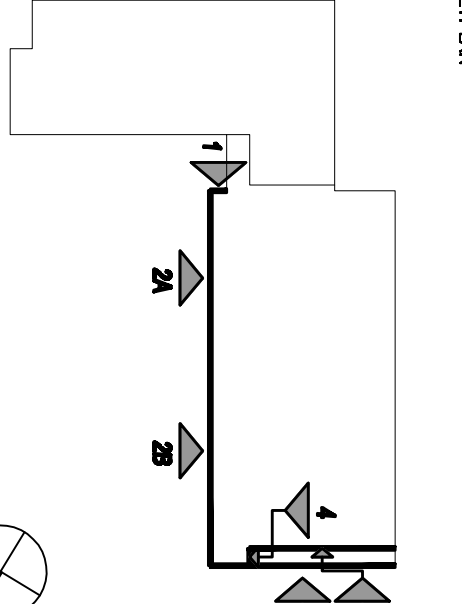
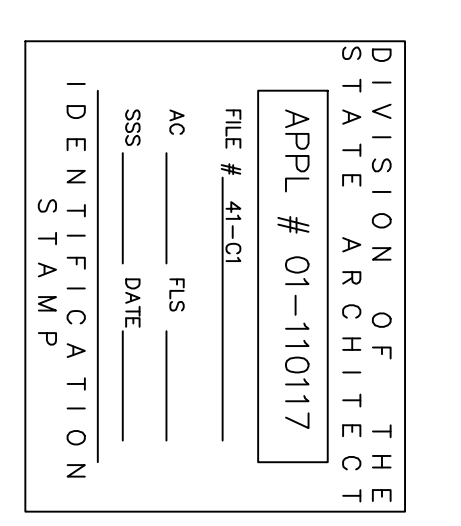
**SKYLINE COLLEGE**  
 SAN JUAN COUNTY  
 COMMUNITY COLLEGE  
 DESIGN

**CIP2 DESIGN-BUILD  
 PROJECT BUILDING 4  
 INCREMENT 2**

DATE: 02/08/11  
 DRAWN BY: JUCO  
 CHECKED BY: JUCO

**AS BUILT DRAWINGS  
 JANUARY 12, 2011**

PC-621



All drawings and details created by Steinberg Architects and Hensel Phelps Construction Co., Inc. are the property of Steinberg Architects and Hensel Phelps Construction Co., Inc. and shall remain the confidential and proprietary information of Steinberg Architects and Hensel Phelps Construction Co., Inc. and shall not be disclosed, copied, or otherwise used without the written consent of Steinberg Architects and Hensel Phelps Construction Co., Inc.