

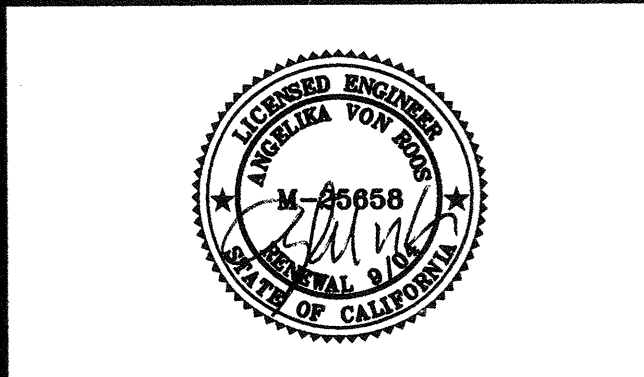
KRUGER BENSEN ZIEMER ARCHITECTS, INC. AIA
30 W. ARRELLA G 855/963-1726 SANTA BARBARA, CA 93101

STEVE DOWTY, A.I.A.
PRINCIPAL IN CHARGE

GERALD SHUSTA
PROJECT ARCHITECT

MECHANICAL ENGINEERING CONSULTANTS
821 W. Michelmore St. Suite A, Santa Barbara, CA 93101
Tel (805) 957-4632

CENTER FOR ADVANCED LEARNING TECHNOLOGY
 SKYLINE COLLEGE
 SAN MATEO COUNTY COMMUNITY COLLEGE DISTRICT
 SAN BRUNO, CALIFORNIA 94066
 3300 COLLEGE DRIVE



BID SET REVISION	10/25/01	AVR
NO. DESCRIPTION	DATE	BY
REVISION		

DRAWN	J. SIERRA, E. MARKHAM
CHECKED	AVR
DATE	03-21-2001
JOB NO.	98-03
SHEET TITLE	

TOILET ROOM PLUMBING AND DEMOLITION PLANS

SHEET
P 1.1
OF

SEISMIC NOTES

ALL PIPES, DUCTS, & CONDUITS SHALL BE SUPPORTED & BRACED PER DSA/OSHPD PRE-APPROVAL #R-0010, THE SMACNA "GUIDELINES FOR SEISMIC RESTRAINTS OF MECHANICAL SYSTEMS & PLUMBING SYSTEMS" ONE COPY SHALL REMAIN ON THE JOB SITE AT ALL TIMES.

ALL MECHANICAL EQUIPMENT SHALL BE BRACED OR ANCHORED TO COMPLY W/ 1998 CBC SECT. 1632A & TABLE 16 A-0.

WHERE ANCHORAGE DETAILS ARE NOT SHOWN ON THE DRAWINGS FIELD INSTALLATION SHALL BE SUBJECT TO THE APPROVAL OF THE ARCHITECT & THE FIELD ENGINEER OF THE DIVISION OF STATE ARCHITECT.

NOTES

- WHA'S SHALL BE PROVIDED WITH AN 8" x 8" ACCESS PANEL.
- PROVIDE TRAP PRIMERS AS REQUIRED TO MAINTAIN SEAL ON ALL INFREQUENTLY USED FIXTURES.
- SEE SHEET M2.7 FOR ADDITIONAL PLUMBING WORK.

DEMOLITION NOTES

- FIELD VERIFY ALL EXISTING CONDITIONS PRIOR TO START OF ANY DEMOLITION INDICATED ON DRAWINGS.
- DEMO DRAWINGS ARE SCHEMATIC, BASED ON CURSORY FIELD OBSERVATION. REPORT ALL DISCREPANCIES TO ARCHITECT BEFORE DISTURBING EXISTING WORK.
- SEE DIVISION 1 SPECIFICATIONS FOR CONTRACTOR'S CONDITIONS OF ACCEPTANCE OF EXISTING CONDITIONS.
- COORDINATE UTILITY OUTAGES WITH ALL AFFECTED PARTIES, INCLUDING THE UTILITY COMPANIES, OWNER AND OCCUPANTS OF BUILDINGS. VERIFY CONSTRUCTION PHASING WITH ARCHITECT.
- REMOVE, RELOCATE AND EXTEND EXISTING WORK TO ACCOMMODATE NEW CONSTRUCTION.
- ISOLATE FIXTURES AND EQUIPMENT TO BE REMOVED BY SHUTTING OFF MAINS. DRAIN ALL WATER PIPING BEFORE REMOVING. REMOVE ALL UNUSED WATER PIPING AND CAP AT NEAREST ACTIVE BRANCH TEE. DO NOT LEAVE DEAD END RUNS. DISINFECT AND FLUSH ENTIRE POTABLE WATER SYSTEM OF ANY DOMESTIC SYSTEM WHERE CROSS CONNECTION IS SUSPECTED TO HAVE OCCURRED.
- REMOVE ANY ABANDONED ABOVE GRADE PIPING FROM PRIOR WORK.
- PROTECT EXISTING STRUCTURE AND WORK FROM DAMAGE DURING DEMOLITION.
- CLEAN AND REPAIR EXISTING MATERIALS AND EQUIPMENT TO BE RELOCATED OR REUSED.
- CAREFULLY REMOVE FIXTURES AND EQUIPMENT. PROVIDE OWNER THE OPTION OF SALVAGING ANY EQUIPMENT OR MATERIALS BEING REMOVED.

PLUMBING FIXTURES

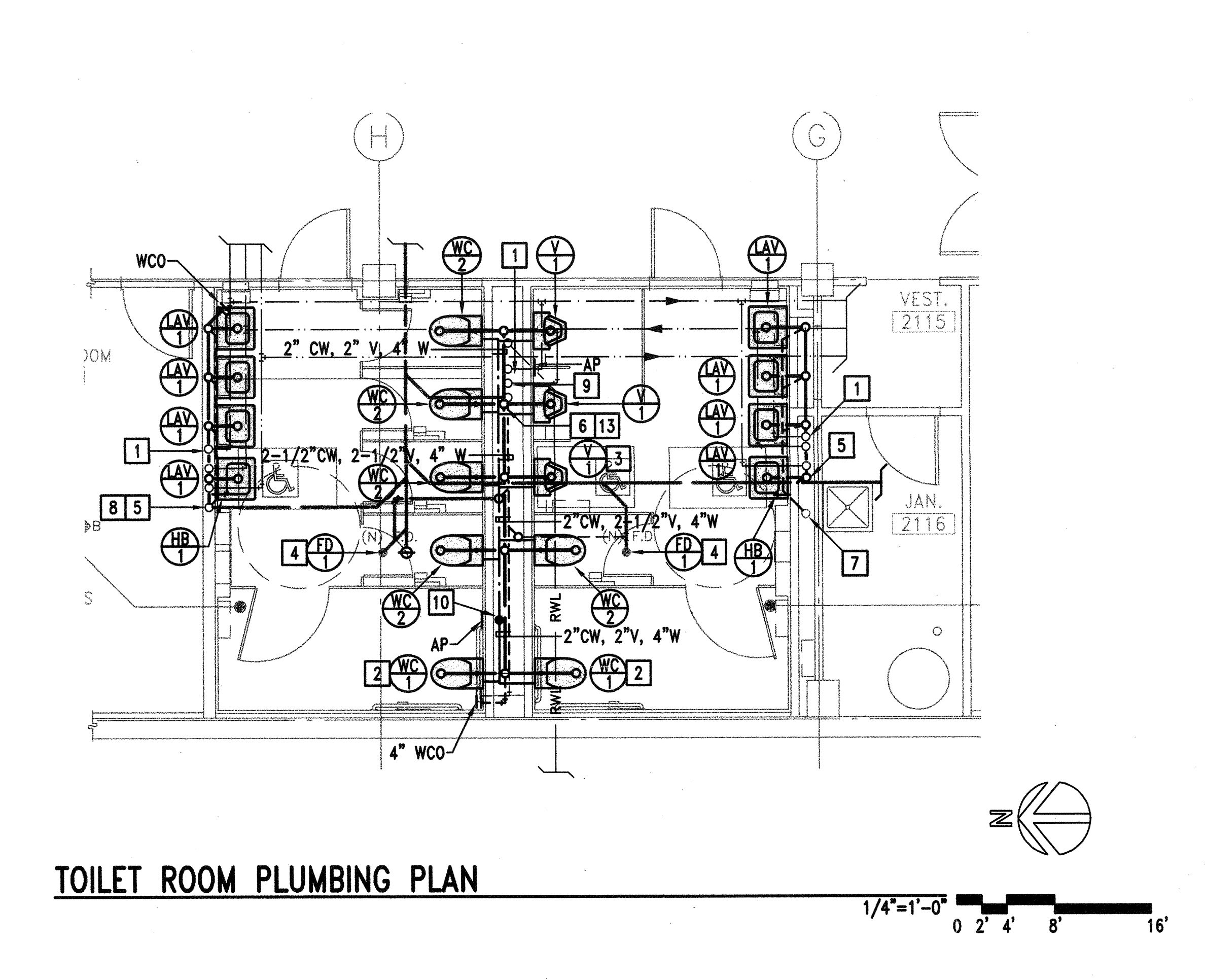
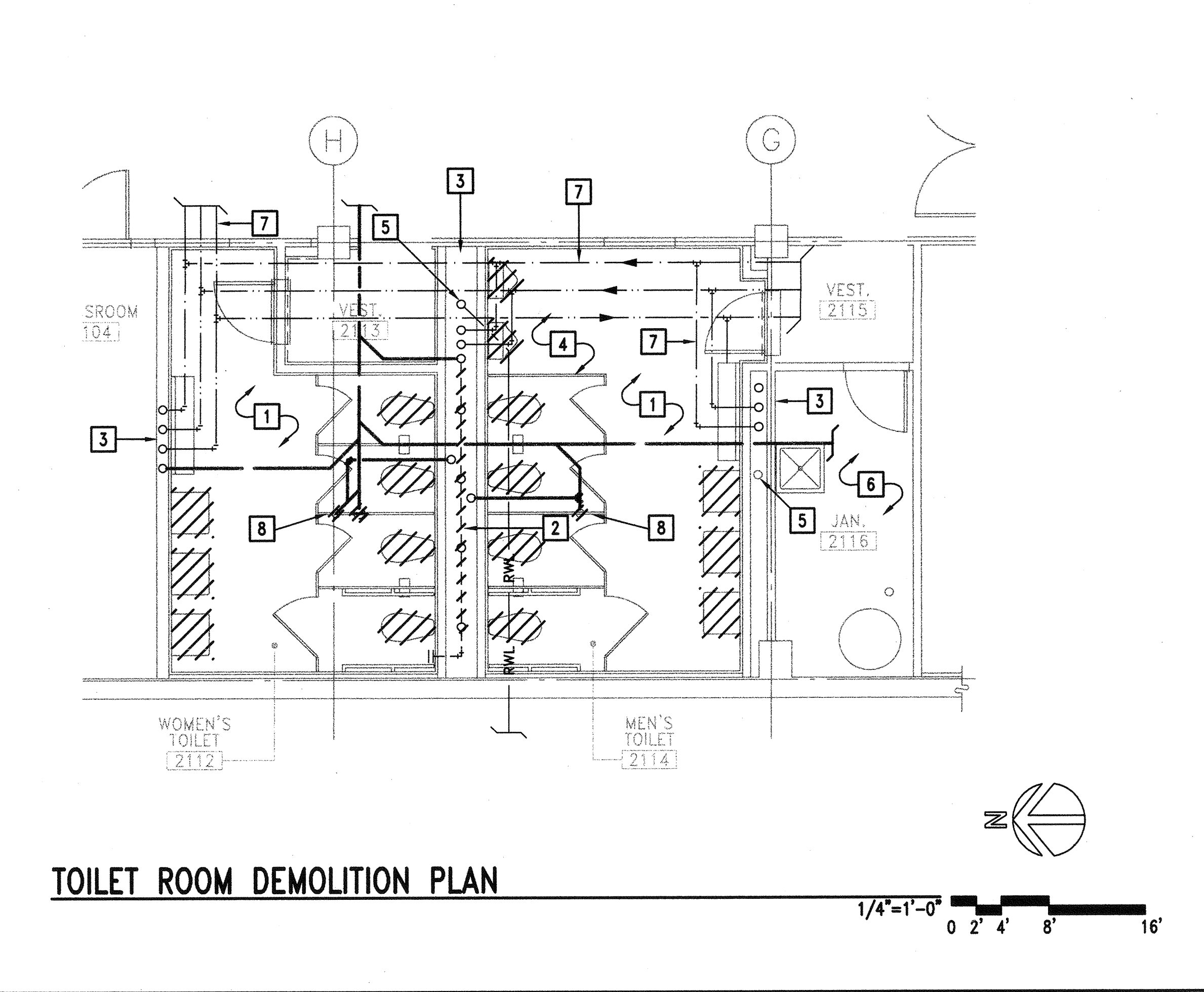
TAG	TYPE	MIN CONNECTION SIZES				SPECIFICATION
		CW	HW	W	V	
WC 1	WATERCLOSET ADA	1-1/2"	-	4"	2"	AMERICAN STANDARD "AFWALL ADA RETROFIT EL 1.6" #2294.011; FLUSH VALVE: PROVIDE SLOAN ROYAL 111 ES-S, SENSOR OPERATED VALVE, 1.6 GPF; SEAT: OLSONITE #9500C OPEN FRONT LESS COVER; PROVIDE JR SMITH CARRIER.
WC 2	WATERCLOSET	1-1/2"	-	4"	2"	AMERICAN STANDARD "AFWALL EL 1.6" #2257.103; FLUSH VALVE: PROVIDE SLOAN ROYAL 111 ES-S, SENSOR OPERATED VALVE, 1.6 GPF INCLUDE TRANSFORMER (ONE PER TEN FLUSHMETERS); SEAT: OLSONITE #9500C OPEN FRONT LESS COVER, PROVIDE JR SMITH CARRIER.
U 1	URINAL	1"	-	2"	1-1/2"	AMERICAN STANDARD "WASHBROOK" #6501.010; FLUSH VALVE: SLOAN ROYAL 186-1-ES-S SENSOR OPERATED VALVE, 1 GPF, URINAL TO PROTRUDE MIN. 14" FROM WALL
LAV 1	LAVATORY	1/2"	1/2"	2"	1-1/2"	AMERICAN STANDARD "LUCERNE" #0356.421; FAUCET: SLOAN EBF-650, SENSOR OPERATED 0.5 GPM, INCLUDE TRANSFORMER, AND THERMOSTATIC MIXING VALVE, GRID STRAINER, STOPS: CHICAGO 1006 LOOSE KEY ANGLE STOPS, DRAIN COVER BY ARCH, PROVIDE JR SMITH FLOOR MOUNTED WALL CARRIER.
HB 1	HOSE BIBB	1/2"	-	-	-	CHICAGO #5, POLISHED CHROME, LOOSE KEY HANDLE, NON REMOVABLE VACUUM BREAKER
FD 1	FLOOR DRAIN	-	-	2"	1-1/2"	J.R. SMITH #2005 - A, ROUND TOP, INCLUDE TRAP PRIMER

SYMBOLS

- ☒ RETURN DUCT DROP
- ☒ SUPPLY DUCT DROP
- ☒ EXHAUST DUCT DROP
- ☒ SUPPLY DUCT RISER
- ☒ RETURN DUCT RISER
- ☒ EXHAUST DUCT RISER
- ☒ CEILING DIFFUSER
- ☒ RETURN REGISTER
- ☒ EXHAUST REGISTER
- ☒ SIDEWALL SUPPLY DIFFUSER (SWD)
- ☒ SIDEWALL RETURN/EXHAUST DIFFUSER (SWR/SWE)
- ☒ MANUAL VOLUME DAMPER WITH LOCKING QUADRANT
- ☒ DOOR LOUVER
- ☒ DOOR UNDERCUT
- ☒ SOUND LINED DUCT
- ☒ FIRE DAMPER (FD)
- ☒ SFD SMOKE & FIRE DAMPER (SFD)
- ☒ DUCT DROP
- ☒ PIPE/DUCT BREAK
- ☒ MORTORIZED DAMPER OR DUCT SMOKE DETECTOR
- ☒ WALL CLEAN OUT
- ☒ WATER HAMMER ARRESTOR
- ☒ PIPE DROP
- ☒ PIPE RISER
- ☒ POINT OF CONNECTION
- ☒ POINT OF DISCONNECTION
- ☒ WASTE
- ☒ VENT
- ☒ FLOOR SINK
- ☒ PRESSURE & TEMPERATURE RELIEF VALVE
- ☒ CHECK VALVE
- ☒ BALL VALVE
- ☒ BALL VALVE/MEMORY STOP
- ☒ PRESSURE REDUCING VALVE
- ☒ AUTOMATIC BALANCING VALVE
- ☒ MANUAL SERVICE/BALANCING VALVE
- ☒ BUTTERFLY VALVE
- ☒ 2 WAY CONTROL VALVE
- ☒ 3 WAY CONTROL VALVE
- ☒ TRIPLE DUTY VALVE
- ☒ UNION
- ☒ STRAINER
- ☒ SOV IN RISER
- ☒ AUTOMATIC AIR VENT
- ☒ PRESSURE GAGE
- ☒ THERMOMETER
- ☒ AQUASTAT
- ☒ BY ELECTRICAL
- ☒ BY MECHANICAL
- ☒ BYPASS TIMER
- ☒ RELAY
- ☒ THERMOSTAT
- ☒ LOW VOLTAGE
- ☒ LINE VOLTAGE
- ☒ MANUAL SWITCH
- ☒ NO CONTACT
- ☒ NC CONTACT
- ☒ OVERLOAD CONTACT
- ☒ MOTOR
- ☒ MOTOR STARTER
- ☒ TIME SWITCH
- ☒ TEMPERATURE SENSOR
- ☒ FLOW SWITCH
- ☒ DIFFERENTIAL PRESSURE SWITCH
- ☒ TEST PORT
- ☒ FLEXIBLE PIPE CONNECTOR
- ☒ FIRE
- ☒ COLD WATER
- ☒ HOT WATER
- ☒ HOT WATER RETURN
- ☒ GAS

ABBREVIATIONS

A	COMPRESSED AIR	MFR	MANUFACTURER
AC	AIR CONDITIONER	MH	MANHOLE
AFF	ABOVE FINISHED FLOOR	MIN	MINIMUM
AFS	AUTOMATIC FIRE SPRINKLER SYSTEM	MNT	MOUNTED
AH	AIR HANDLER	MTL	METAL
AP	ACCESS PANEL	MVD	MANUAL VOLUME DAMPER
ARCH	ARCHITECTURAL DRAWINGS	(N)	NEW
BDD	BACK DRAFT DAMPER	N/A	NOT APPLICABLE
BHP	BRAKE HORSEPOWER	NC	NORMALLY CLOSED
BS	BIRD SCREEN	NIC	NOT IN CONTRACT
BTU	BRITISH THERMAL UNIT	NTS	NOT TO SCALE
CA	COMBUSTION AIR	ODB	OPPOSED BLADE DAMPER
CD	CEILING DIFFUSER	OD	OUTSIDE DIAMETER
CFH	CUBIC FEET PER HOUR	OFD	OVERFLOW DRAIN
CFM	CUBIC FEET PER MINUTE	OFL	OVERFLOW RAINWATER LEADER
CHS	CHILLED WATER SUPPLY	OSA	OUTSIDE AIR
CHR	CHILLED WATER RETURN	OSY	OUTSIDE STEM & YOKE
CLG	CEILING	OW	OILY WASTE
CO	CLEANOUT	P&T	PRESSURE & TEMPERATURE RELIEF
CONT	CONTINUATION	PH	PHASE
COTG	CLEAN OUT TO GRADE	PIV	POST INDICATOR VALVE
CW	COLD WATER DOMESTIC	PLCS	PLACES
D	CONDENSATE OR EQUIPMENT DRAIN	PPC	POINT OF CONNECTION
DB	DRY BULB TEMPERATURE DEGREES F	PPM	PARTS PER MILLION
DIA	DIAMETER	PRESS	PRESSURE
DL	DOOR LOUVER	PRV	PRESSURE REDUCING VALVE
DN	DOWN	PSI	POUNDS PER SQUARE INCH
DSP	DRY STANDPIPE	(R)	REMOVE
DTR	DUCT THROUGH ROOF	RD	ROOF DRAIN
DWGS	DRAWINGS	REFRIG	REFRIGERATION
DX	DIRECT EXPANSION	REQD	REQUIRED
(E)	EXISTING	RH	REFRIGERANT HOT GAS LINE
EER	ENERGY EFFICIENCY RATING	RL	REFRIGERANT LIQUID LINE
EF	EXHAUST FAN	RLA	RATED LOAD AMPS
EFF	EFFICIENCY	RPM	REVOLUTIONS PER MINUTE
ELEC	ELECTRICAL DRAWINGS	RSL	REFRIGERANT SUCTION LINE
ELEV	ELEVATION	RWL	RAIN WATER LEADER
ER	EXHAUST REGISTER	SD	STORM DRAIN OR SMOKE DETECTOR
ESP	EXTERNAL STATIC PRESSURE	SE	SEASONAL EFFICIENCY
EW	ELECTRIC WATER HEATER	SEER	SEASONAL ENERGY EFFICIENCY RATING
(F)	FUTURE	SF	SQUARE FEET
FC	FAN COIL	SFD	SMOKE & FIRE DAMPER
FA	FREE AREA	SL	SOUNDLINER
FCO	FLOOR CLEAN OUT	SMH	SEWER MAN HOLE
FD	FIRE DAMPER	SOV	SHUT OFF VALVE
FF	FINISHED FLOOR ELEVATION	SP	STATIC PRESSURE
FL	FLOW LINE	SPEC	SPECIFICATIONS
FLA	FULL LOAD AMPS	STD	STANDARD
FLD	FLOOR DRAIN	STL	STEEL
FLR	FLOOR	STRUCT	STRUCTURAL DRAWINGS
FLR	FLOOR	SW	SOFTENED WATER
FPM	FEET PER MINUTE	SWD	SIDE WALL DIFFUSER
FS	FLOOR SINK	SWE	SIDE WALL EXHAUST
FT	FEET	SWR	SIDE WALL RETURN
G	GAS LINE (FUEL GAS)	TG	TRANSFER GRILLE
GA	GAUGE	TSTAT	THERMOSTAT
GAL	GALLONS	TW	TEMPERED WATER
GALV	GALVANIZED	TYP	TYPICAL
GC	GENERAL CONTRACTOR	U	URINAL
GI	GALVANIZED IRON	UC	UNDERCUT
GPM	GALLONS PER MINUTE	UH	UNIT HEATER
H	HUMIDITY	UL	UNDERWRITERS' LABORATORIES, INC.
HB	HOSE BIBB	UNO	UNLESS NOTED OTHERWISE
HP	HORSEPOWER	UTR	UP THRU ROOF
HR	HEATING WATER RETURN	V	SANITARY VENT
HS	HEATING WATER SUPPLY	VAC	HOUSE VACUUM
HSPF	HEATING SEASONAL PERFORMANCE FACTOR	VB	VACUUM BREAKER
HW	HOT WATER DOMESTIC	VTR	VANDAL RESISTANT
HWR	HOT WATER RETURN DOMESTIC	VTR	VENT THRU ROOF
HZ	HERTZ	W	SANITARY WASTE
IW	INDIRECT WASTE	WC	WATER CLOSET
IWG	INCHES WATER GAUGE	WCO	WALL CLEAN OUT
KW	KILOWATT	WF	WALL FURNACE
LAV	LAVATORY	WH	WATER HEATER
LAT	LEAVING AIR TEMP	WHA	WATER HAMMER ARRESTOR
LWT	LEAVING WATER TEMP	WM	WATER METER
MBH	THOUSAND BTU PER HOUR	WT	WEIGHT
MCA	MINIMUM CIRCUIT AMPACITY		



DEMO KEYNOTES

- REMOVE ALL (E) PLUMBING FIXTURES AND ASSOCIATED PIPING AND CARRIERS.
- REMOVE (E) PIPING TO (E) FIXTURES.
- (E) RISERS TO REMAIN.
- PROTECT (E) HEATING WATER PIPING TO REMAIN.
- (E) RWL TO REMAIN.
- JANITOR ROOM PIPING, FIXTURES, AND EQUIPMENT TO REMAIN.
- PIPING MAINS AND RISERS TO REMAIN.
- REMOVE (E) FLOOR DRAIN AND DRAIN BODY.

KEYNOTES

- (E) CW, HW & HWR RISERS.
- MOUNT WC AT ADA HEIGHT, SEE ARCH.
- MOUNT URINAL AT ADA HEIGHT, SEE ARCH.
- CONNECT (N) FD TO (E) FD PIPING. ADD TRAP PRIMER FROM WC FV.
- POC TO (E) 3" W.
- POC TO (E) 4"W.
- 1-1/2" V, POC TO (E) 2" V.
- POC TO (E) 1-1/2" V.
- POC TO (E) 2-1/2" CW RISER, WITH SOV & AP @ +5'-6", ROUTE 1-1/4" CW TO EACH WC; 1" CW TO EACH URINAL.
- WHA WITH ACCESS PANEL.
- POC TO (E) 3/4" HW & 3/4" CW RISERS. ROUTE 1/2" HW & CW TO (E) LAV.
- SEE SHT P 2.2 FOR CONT.
- POC TO (E) 4" V, 4" V FROM WC AND 2-1/2" AND 2" HORIZONTAL VENTS.

E:\KB\Bugs\Bugs\Ziemer\K00014-Skyline\sketch\K00014-PT_1.dwg, 10/26/2001 01:10:18 PM, Chris, ACAD2002, esee Final\p3, Arch E1, 30.4.42 in., 1:1