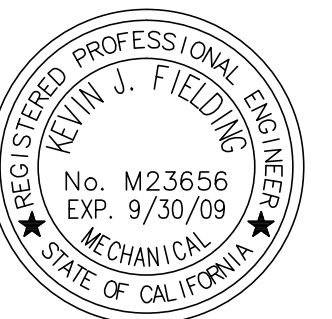


These drawings and specifications have been prepared by CMT for their exclusive use in accord with Sec. 6737.4 of the Professional Engineers Act of the State of California.

NO.	ISSUES/REVISIONS	DATE
	100% SCHEMATIC DESIGN	04/28/08
	50% DESIGN DEVELOPMENT	06/13/08
	100% DESIGN DEVELOPMENT	07/28/08
	INCREMENT 2 80% REVIEW	01/01/08
7	DSA INCREMENT 2	11/11/08
	STRUCTURE & GFRC PANELS	11/11/08
	DSA INCREMENT #3 50% REVIEW	05/13/09
9	DSA INCREMENT #3 80% REVIEW	12/16/08
	DSA INCREMENT #3	02/09/09
10	TEENANT IMPROVEMENT AND ROOFING SYSTEM	
12	HPOC REVIEW	04/30/09
14	DSA INCREMENT #3 BACKCHECK	05/13/09
	ISSUED FOR CONSTRUCTION	10/27/09
	AS-BUILT DRAWINGS	04/06/11

DIVISION OF THE STATE ARCHITECT
APPL # 01-110117
FILE # 41-C1
AC _____ FLS _____
SSS _____ DATE _____
IDENTIFICATION STAMP



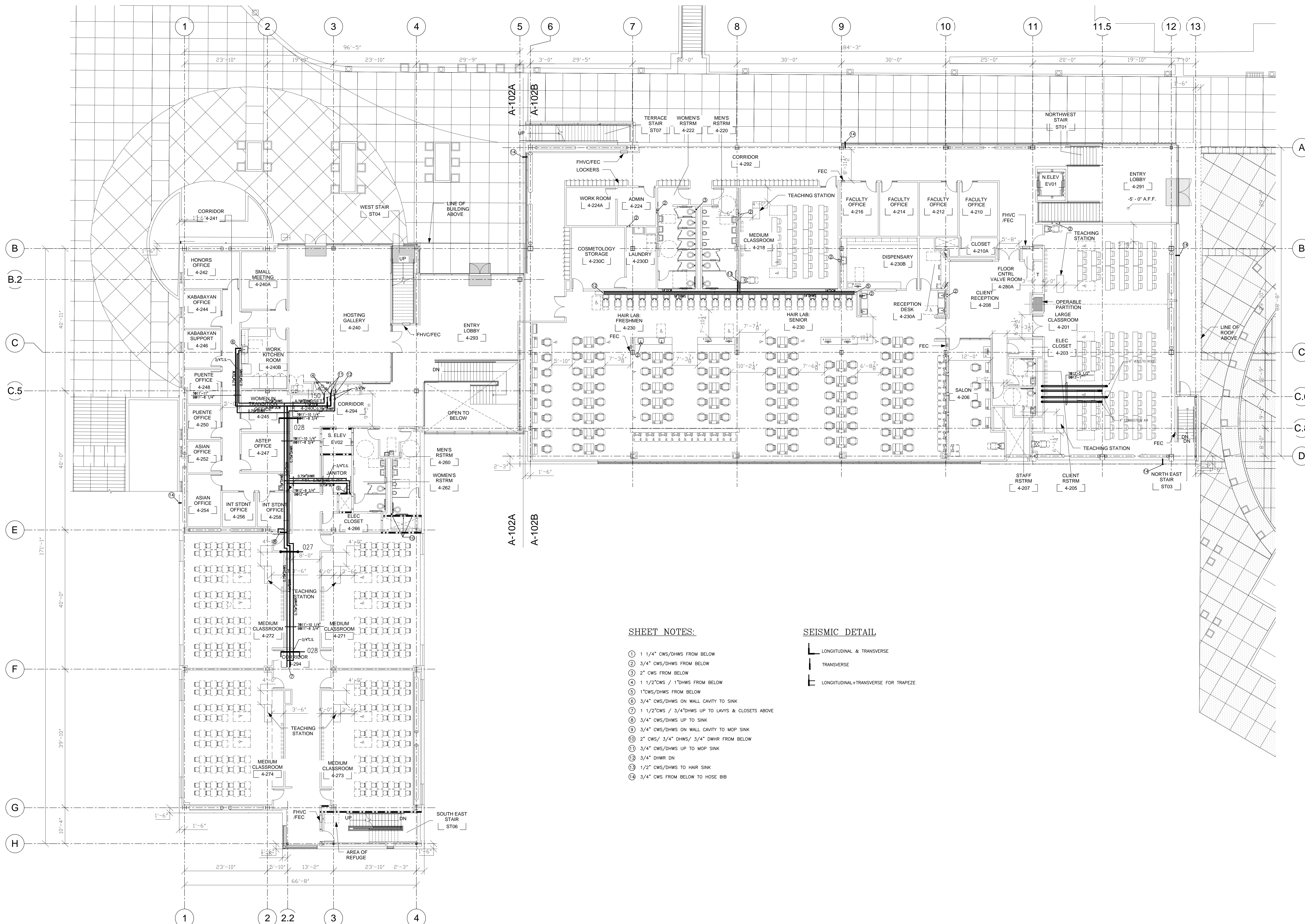
SKYLINE COLLEGE
SAN MATEO COUNTY
COMMUNITY COLLEGE
DISTRICT
CIP2 DESIGN-BUILD
PROJECT
BUILDING 4
INCREMENT 3

KEY PLAN

CMT PROJECT NO. 28212 DRAWN BY:
DATE: 1-29-09 CHECKED BY:
SCALE: 0 4' 8' 12' 16' 24' 32'

SEISMIC
SECOND FLOOR
DOMESTIC
WATER AND
NATURAL GAS
PLUMBING PLAN

SHEET NO. P-502



SHEET NOTES:

- ① 1 1/4" CWS/DHWS FROM BELOW
- ② 3/4" CWS/DHWS FROM BELOW
- ③ 2" CWS FROM BELOW
- ④ 1 1/2" CWS / 1" DHWS FROM BELOW
- ⑤ 1" CWS/DHWS FROM BELOW
- ⑥ 3/4" CWS/DHWS ON WALL CAVITY TO SINK
- ⑦ 1 1/2" CWS / 3/4" DHWS UP TO LAVS & CLOSETS ABOVE
- ⑧ 3/4" CWS/DHWS UP TO SINK
- ⑨ 3/4" CWS/DHWS ON WALL CAVITY TO MOP SINK
- ⑩ 2" CWS / 3/4" DHWS / 3/4" DHWR FROM BELOW
- ⑪ 3/4" CWS/DHWS UP TO MOP SINK
- ⑫ 3/4" DHWR DN
- ⑬ 1/2" CWS/DHWS TO HAIR SINK
- ⑭ 3/4" CWS FROM BELOW TO HOSE BIB

SEISMIC DETAIL

- └ LONGITUDINAL & TRANSVERSE
- └ TRANSVERSE
- └ LONGITUDINAL+TRANSVERSE FOR TRAPEZE