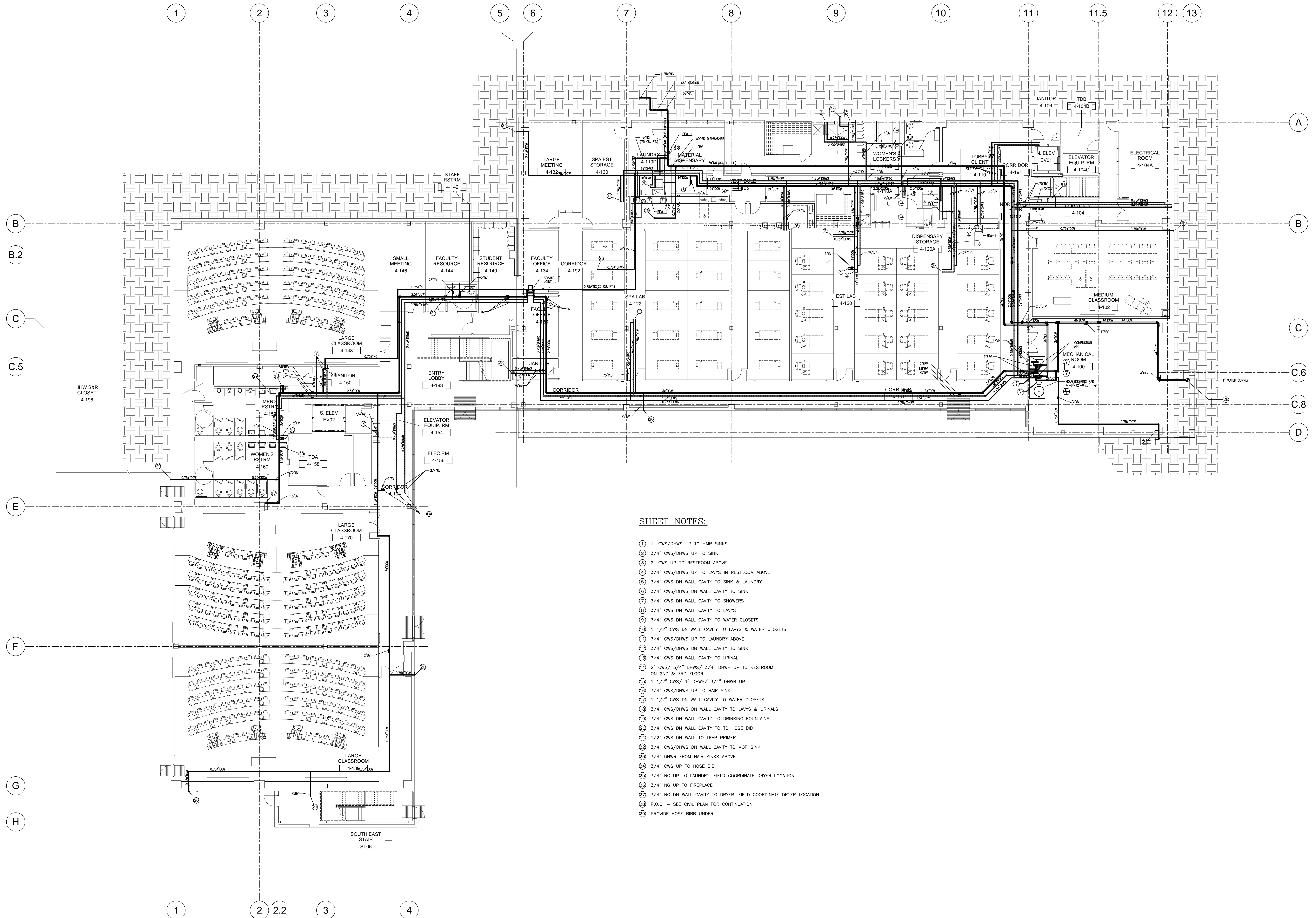


These drawings and specifications have been prepared by CMT for their exclusive use in accordance with Sec. 6737.4 of the Professional Engineers Act of the State of California.

NO.	ISSUES/REVISIONS	DATE
	100% SCHEMATIC DESIGN	04/26/06
	50% DESIGN DEVELOPMENT	06/13/06
	100% DESIGN DEVELOPMENT	07/28/06
	INCREMENT 2 80% REVIEW	09/10/06
	DSA INCREMENT 2	
7	STRUCTURE & GFRC PANELS	11/11/06
	DSA INCREMENT #3 50% REVIEW	11/11/06
9	DSA INCREMENT #3 80% REVIEW	12/15/06
10	DSA INCREMENT #3	
	TENANT IMPROVEMENT AND ROOFING SYSTEM	02/09/09
12	HFOC REVIEW	04/30/09
14	DSA INCREMENT #3 BACKCHECK	05/12/09
	ISSUED FOR CONSTRUCTION	10/27/09
	AS-BUILT DRAWINGS	04/06/11
	AS-BUILT DRAWINGS	06/10/11
	AS-BUILT DRAWINGS	06/20/11



SHEET NOTES:

- 1 1" CWS/DHWS UP TO HAIR SINKS
- 2 3/4" CWS/DHWS UP TO SINK
- 3 2" CWS UP TO RESTROOM ABOVE
- 4 3/4" CWS/DHWS UP TO LAVS IN RESTROOM ABOVE
- 5 3/4" CWS DN WALL CAVITY TO SINK & LAUNDRY
- 6 3/4" CWS/DHWS DN WALL CAVITY TO SINK
- 7 3/4" CWS DN WALL CAVITY TO SHOWERS
- 8 3/4" CWS DN WALL CAVITY TO LAVS
- 9 3/4" CWS DN WALL CAVITY TO WATER CLOSETS
- 10 1 1/2" CWS DN WALL CAVITY TO LAVS & WATER CLOSETS
- 11 3/4" CWS/DHWS UP TO LAUNDRY ABOVE
- 12 3/4" CWS/DHWS DN WALL CAVITY TO SINK
- 13 3/4" CWS DN WALL CAVITY TO URINAL
- 14 2" CWS/ 3/4" DHWS/ 3/4" DHWR UP TO RESTROOM ON 2ND & 3RD FLOOR
- 15 1 1/2" CWS/ 1" DHWS/ 3/4" DHWR UP
- 16 3/4" CWS/DHWS UP TO HAIR SINK
- 17 1 1/2" CWS DN WALL CAVITY TO WATER CLOSETS
- 18 3/4" CWS/DHWS DN WALL CAVITY TO LAVS & URINALS
- 19 3/4" CWS DN WALL CAVITY TO DRINKING FOUNTAINS
- 20 3/4" CWS DN WALL CAVITY TO TO HOSE BIB
- 21 1/2" CWS DN WALL TO TRAP PRIMER
- 22 3/4" CWS/DHWS DN WALL CAVITY TO MOP SINK
- 23 3/4" DHWR FROM HAIR SINKS ABOVE
- 24 3/4" CWS UP TO HOSE BIB
- 25 3/4" NG UP TO LAUNDRY, FIELD COORDINATE DRYER LOCATION
- 26 3/4" NG UP TO FIREPLACE
- 27 3/4" NG DN WALL CAVITY TO DRYER, FIELD COORDINATE DRYER LOCATION
- 28 P.O.C. - SEE CIVIL PLAN FOR CONTINUATION
- 29 PROVIDE HOSE BIBB UNDER

DIVISION OF THE STATE ARCHITECT  
APPL # 01-110117  
FILE # 41-C1  
AC \_\_\_\_\_ FLS \_\_\_\_\_  
SSS \_\_\_\_\_ DATE \_\_\_\_\_  
IDENTIFICATION STAMP



SKYLINE COLLEGE  
SAN MATEO COUNTY  
COMMUNITY COLLEGE  
DISTRICT  
CIP2 DESIGN-BUILD  
PROJECT  
BUILDING 4  
INCREMENT 3

DATE: 1-29-09  
SCALE: 0 4' 8' 12' 16' 24' 32'  
SHEET TITLE:  
FIRST FLOOR DOMESTIC WATER AND NATURAL GAS PLUMBING PLAN  
SHEET NO. P-101