

These drawings and specifications have been prepared by CMT for their exclusive use in accordance with Spec 6702.2 of the International Building Code, 2015 Edition, California Supplement, 2015 Edition.

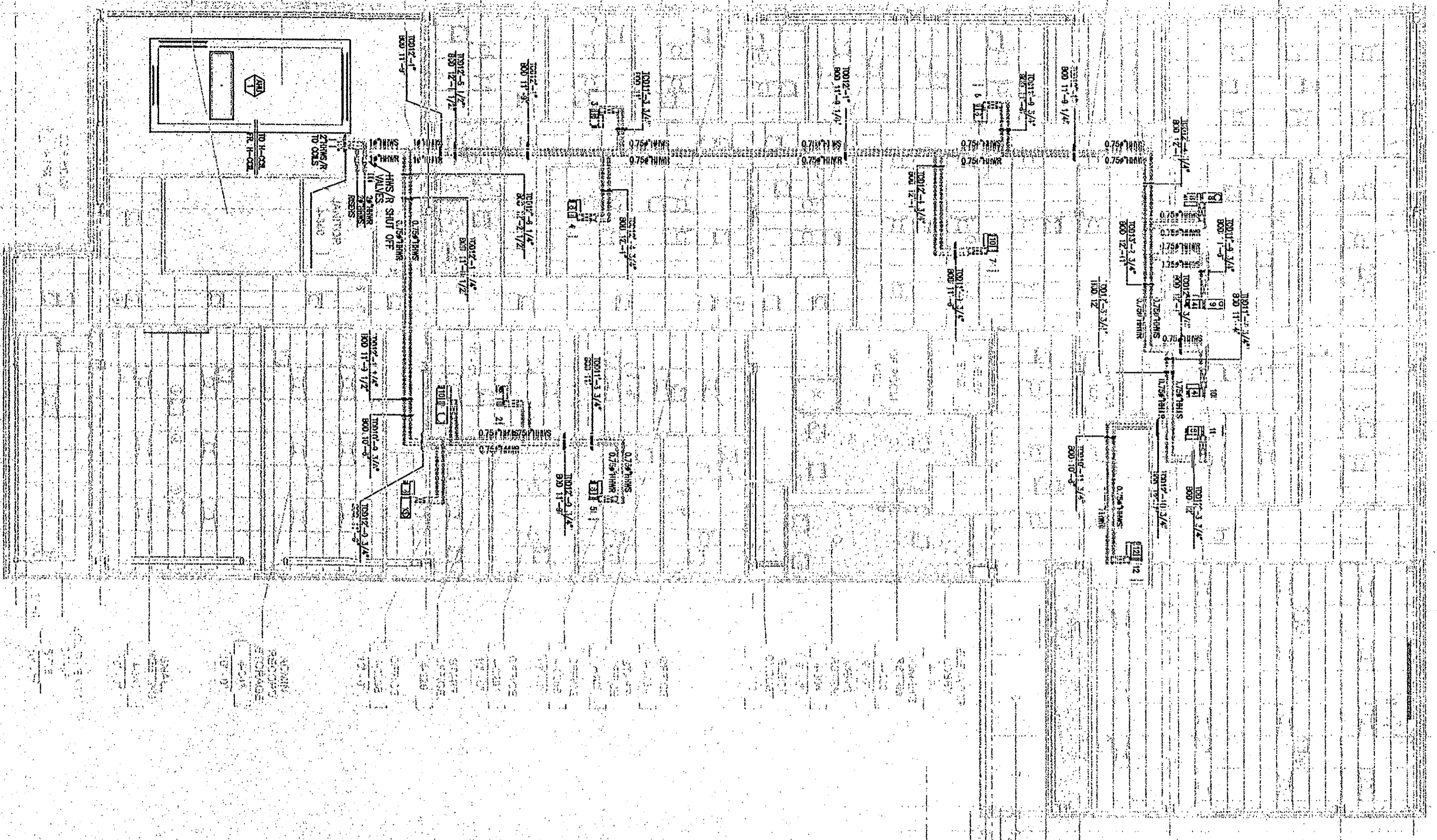
NO.	DESCRIPTION	DATE
1	50% DESIGN DEVELOPMENT	07/2013
2	100% DESIGN DEVELOPMENT	07/2013
3	PERMANENT RECORD SET	10/10/13
4	PERMANENT RECORD SET	11/14/13
5	PERMANENT RECORD SET	02/20/14
6	PERMANENT RECORD SET	02/20/14
7	PERMANENT RECORD SET	02/20/14
8	PERMANENT RECORD SET	12/15/10

DIVISION OF THE STATE ARCHITECT
 APPL # 01-110117
 FILE # 41-C1
 AC R3
 DATE
 IDENTIFICATION STAMP
 Increment 3

SKYLINE COLLEGE
 SAN MATEO COUNTY
 COMMUNITY COLLEGE
CIP2 DESIGN-BUILD
PROJECT
BUILDING 4
INCREMENT 3

LEVEL 3
MECHANICAL
PIPING SEISMIC
FLOOR
PLAN

M-508



DATE: 4/23/2015

ISAT

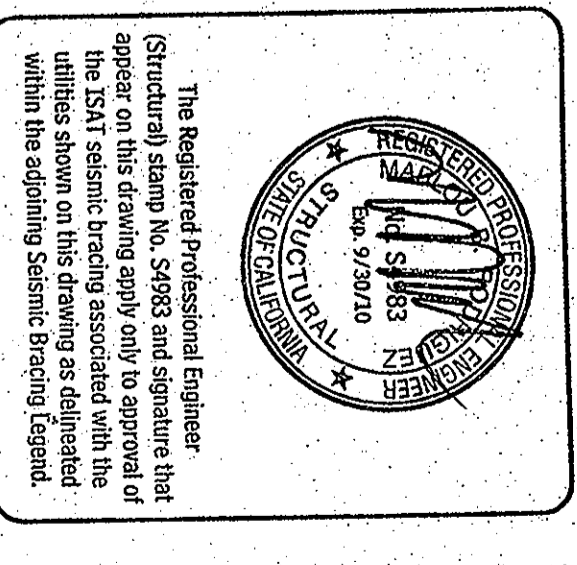
ISAT SEISMIC RESTRAINT LEGEND
 SKYLINE COLLEGE BLDG. 4
 SAN BRUNO, CA
 REVISION: 01 BY: CV
 2007 CSC

GENERAL NOTES:

- 1. A longitudinal brace at a 90 degree angle in direction may act as a Transverse Brace if its location within 2 feet of the change in direction of a member is shown on a plan view.
- 2. A Transverse Brace may act as a Longitudinal Brace if its location within 2 feet of the change in direction of a member is shown on a plan view.
- 3. For cable bracing, see separate construction details, see ISAT Page E3.
- 4. For S&T Manual Page 4.3 Note 20 - Inclined brace angle in excess of 45 degrees are acceptable up to a maximum 90 degrees provided the brace is attached to the structure in a manner that does not exceed the requirements of the International Building Code.
- 5. Where Transverse Bracing Information is blank, a 90 degree bracing (combined Transverse and Longitudinal) is required for seismic bracing information.
- 6. For vertical bracing information, see separate Vertical Support Engineering Package if designed by ISAT, otherwise refer appropriate codes, specifications, and contract documents.

SUSPENDED DUCT/CYCLING				TRANSVERSE BRACING INFORMATION				LONGITUDINAL BRACING INFORMATION			
Pipe	Height	Accessed Utility	Bracing Type	Transverse Bracing	Longitudinal Bracing	Transverse Bracing	Longitudinal Bracing	Transverse Bracing	Longitudinal Bracing	Transverse Bracing	Longitudinal Bracing
Horizontal or Vertical	W/L	TYPE	TYPE	TYPE	TYPE	TYPE	TYPE	TYPE	TYPE	TYPE	TYPE

NO BRACING REQUIRED



These drawings are the property of Steinberg Architects and shall remain the property of Steinberg Architects. No part of these drawings may be reproduced or transmitted in any form or by any means, electronic or mechanical, including photocopying, recording, or by any information storage and retrieval system, without the prior written permission of Steinberg Architects.