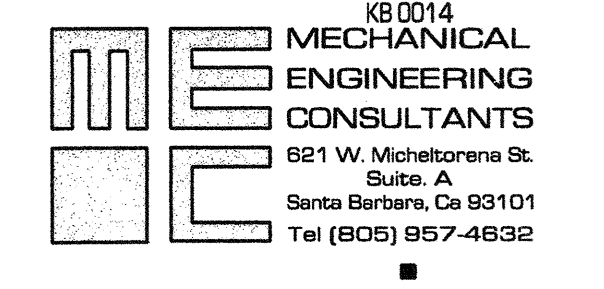


KRUGER BENSEN ZIEMER
ARCHITECTS, INC. AIA
30 W. ARRELLAGA SANTA BARBARA, CA.
93101 805/963.1728

STEVE DOWTY, A.I.A.
PRINCIPAL IN CHARGE

GERALD SHUSTA
PROJECT ARCHITECT

All design, engineering and construction documents are the property of Kruger-Bensen-Ziemer, AIA architects, and are created, written and designed for use in, and in connection with, the specific project. None of such design, engineering or plans shall be used by or disclosed to any person, firm or corporation for any purpose whatsoever without the written permission of Kruger-Bensen-Ziemer.

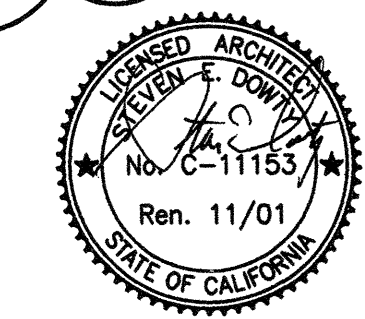
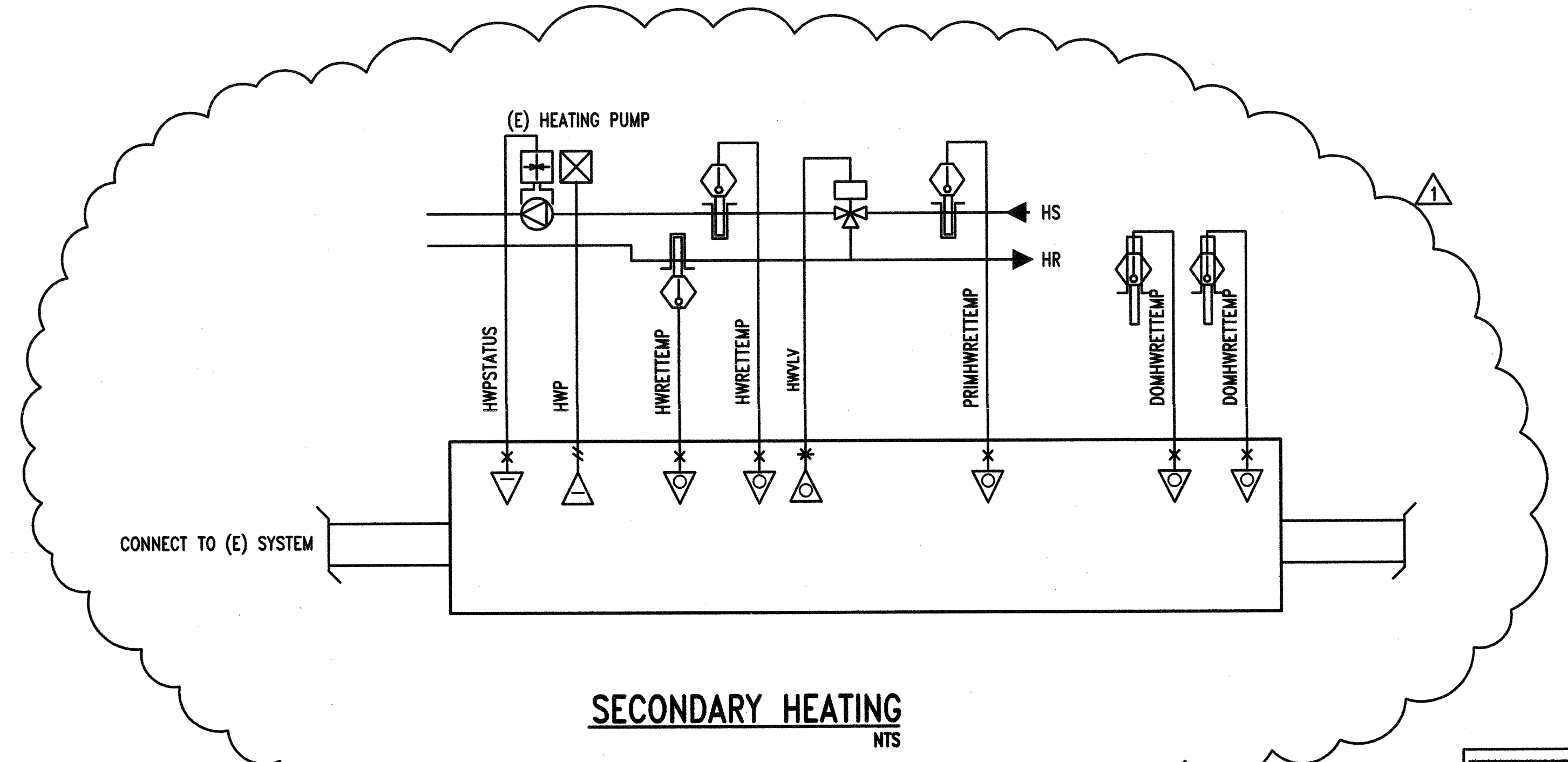
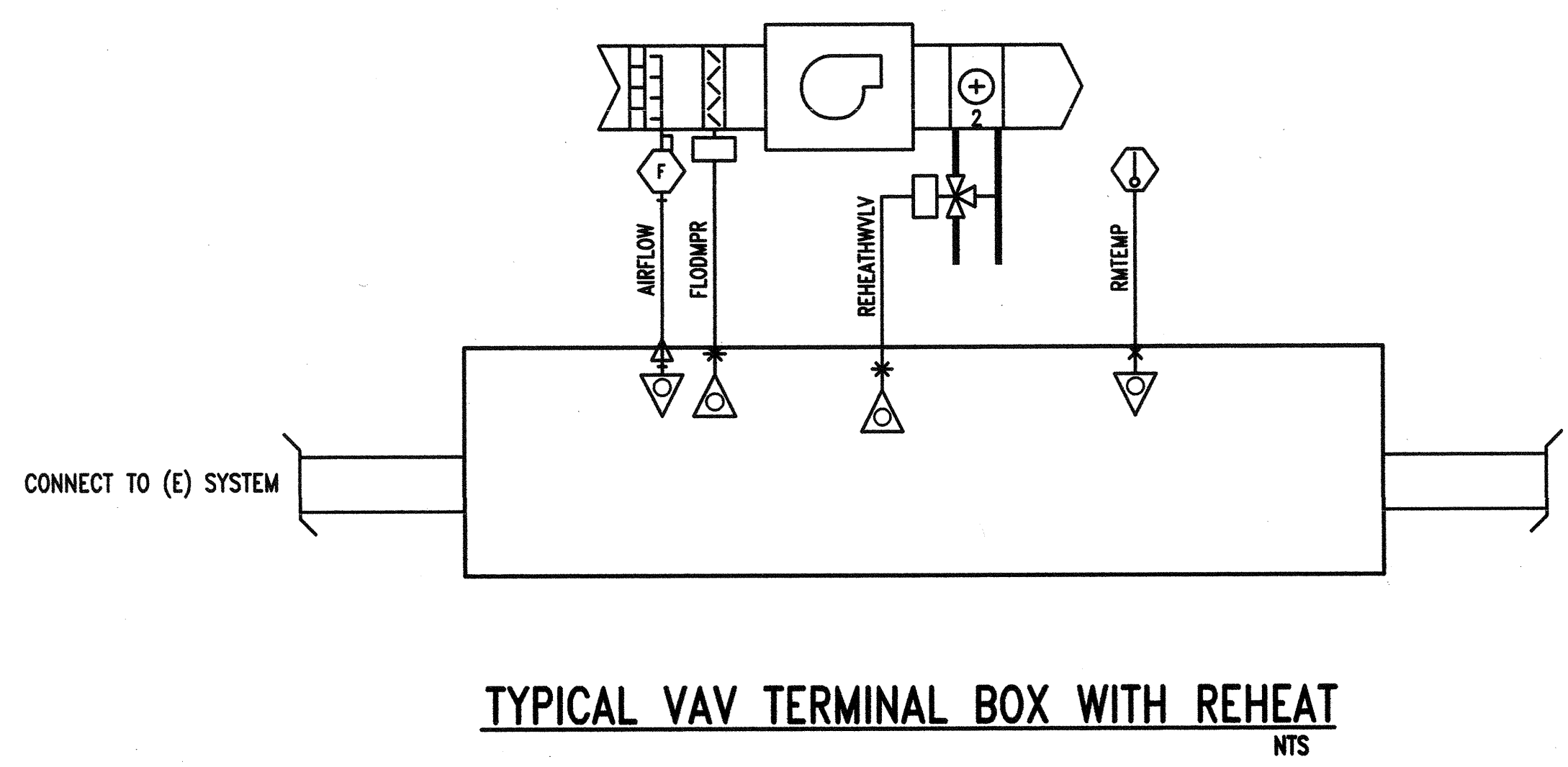
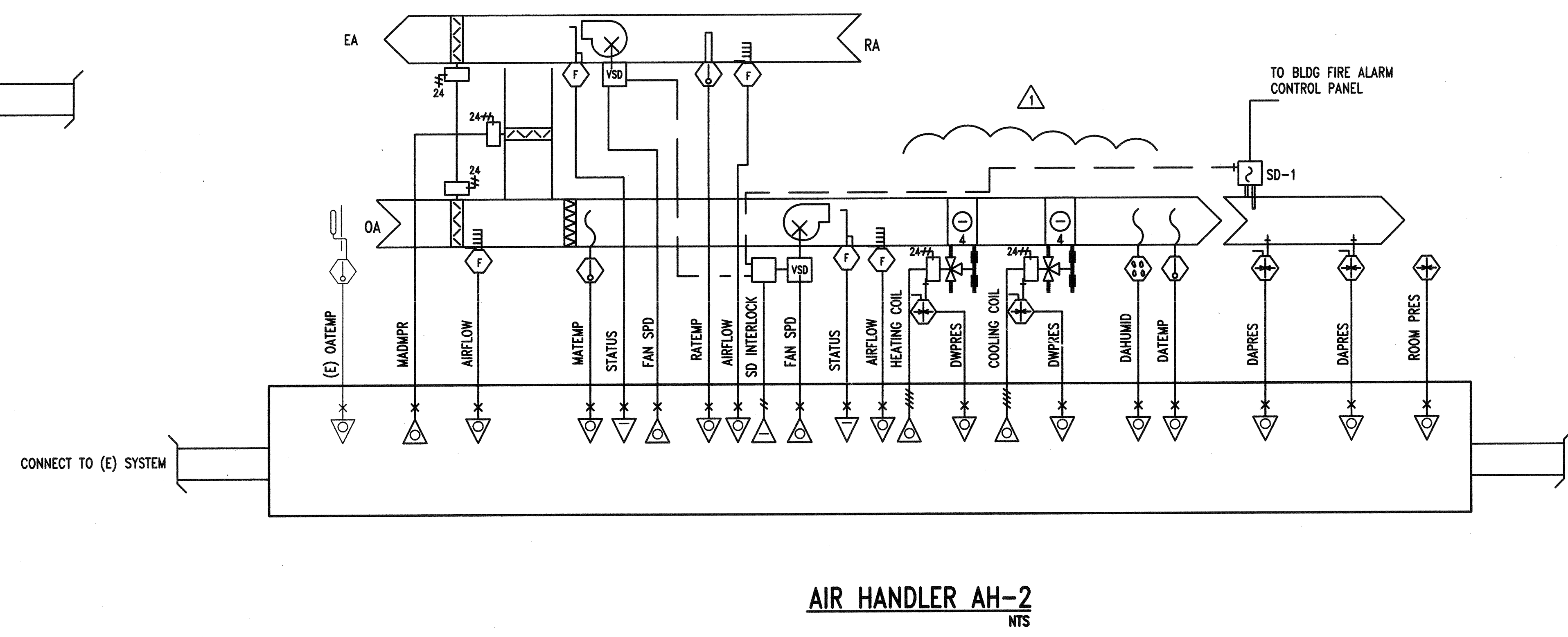
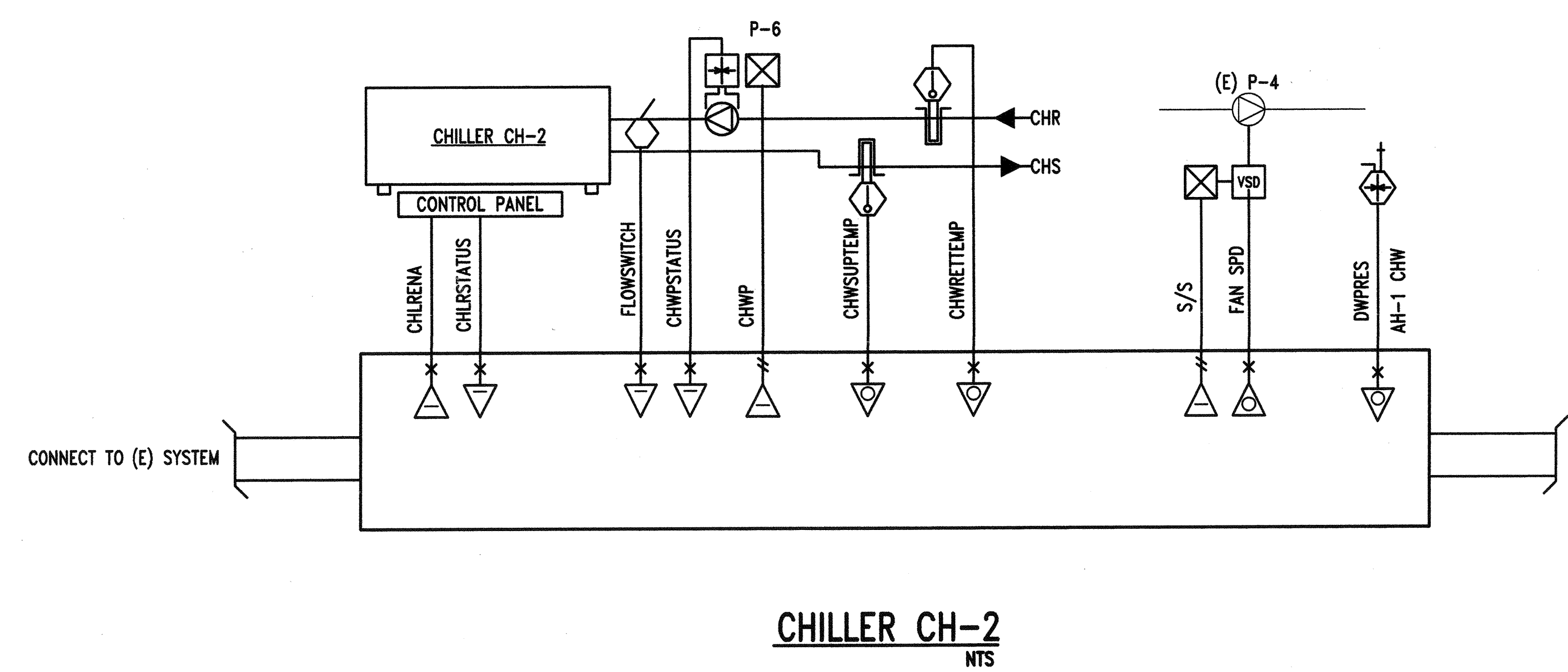


80014
MECHANICAL
ENGINEERING
CONSULTANTS
801 W. Michelenne St.
Santa Barbara, CA 93101
Tel (805) 957-4632

CENTER FOR ADVANCED LEARNING TECHNOLOGY
SKYLINE COLLEGE
SAN MATEO COUNTY COMMUNITY COLLEGE DISTRICT
3300 COLLEGE DRIVE
SAN BRUNO, CALIFORNIA 94066

GENERAL NOTES
1. PROVIDE 120 VAC 15 AMP CIRCUIT TO EACH PANEL LOCATION.
2. DO NOT MIX LOW VOLTAGE CONTROL WIRING AND 120 VAC WIRING IN THE SAME CONDUIT.

<p>Mechanical Legend</p> <ul style="list-style-type: none"> Centrifugal Fan Propeller Fan Vane Axial Fan Damper - Opposed Damper - Parallel Air Filter Air Flow Station Humidifier Water Hg/Clg Coil Heating Coil Cooling Coil Elec Heating Coil 2-Way Control Valve 3-Way Control Valve Water Flow Meter Water Pump Magnetic Starter Variable Speed Drive 	<p>Sensor Legend</p> <ul style="list-style-type: none"> Temperature Humidity Enthalpy Diff. Pressure Absolute Pressure Flow Meter Velocity Voltage Current Elec. Power Level Light Rotation Smoke Timer Vibration Carbon Monoxide Refrigerant Gas Voltage Source Resistance Source Dry Contact Source Potentiometer 	<p>Sensor Probe Legend</p> <ul style="list-style-type: none"> Duct Insertion Probe Duct Averaging Remote Bulb Outside Air Fire Stat Duct Static Pressure Diff. Pressure Air Averaging Station Hot Wire Sensor Pitot Tube Pressure Tap Pipe Wall Insertion Pipe Surface Mtd. Venturi Flow Meter Orifice Plate Turbine Probe Annubar Paddle Switch 	<p>Body Style Legend</p> <ul style="list-style-type: none"> Pneum. Actuator Actuator & Positioner Elec. Actuator Controller Sensor 	<p>DDC Equipment Legend</p> <ul style="list-style-type: none"> OPM OPEN PROTOCOL MASTER OPEN LINK PROTOCOL INTERFACE PANEL O-LINK OPEN LINK PROTOCOL INTERFACE PANEL ZM ZONE MANAGER C-BUS TO E-BUS LINK I/O M XL-10 INPUT OUTPUT MODULE SMART ACTUATOR XL-10 TERMINAL CONTROLLER w/ INTEGRAL DAMPER ACTUATOR OPERATOR WORKSTATION w/ XPC500 C-BUS INTERFACE CARD, SOFTWARE & GRAPHICS C-BUS HONEYWELL 2 WIRE #18 COMMUNICATION TRUNK E-BUS HONEYWELL 2 WIRE #22 ZONE COMMUNICATION TRUNK
<p>Connection Legend</p> <ul style="list-style-type: none"> Digital Input Point Digital Output Point Analog Input Point Analog Output Point Totalizer Input Point 		<p>Wiring Legend</p> <ul style="list-style-type: none"> Twisted Pair Shielded Twisted Pair Twisted Triplet Shielded Twisted Triplet Individual Conductors 		



IDENTIFICATION STAMP
DIV. OF THE STATE ARCHITECT
OFFICE OF REGULATION SERVICES
APPL 01-103735
Ren. 11/01
DATE 02/27/01

NO.	DESCRIPTION	DATE	BY
10/28/01	AVR		

DRAWN	J. SIERRA, T. RAUTIO
CHECKED	AVR
DATE	03-21-2001
JOB NO.	98-03
SHEET TITLE	CONTROLS SCHEMATICS
SHEET	M 5.1

E:\KBR\KRUGERBENSENZIEMER\80014\SKYLINE\ADVANCEDLEARNING\80014.MS_1.dwg, 10/26/2001 11:32:05 AM, Chris_ACAD2002 esator Final.dwg, Arch ET, 30 x 42 in., 1:1