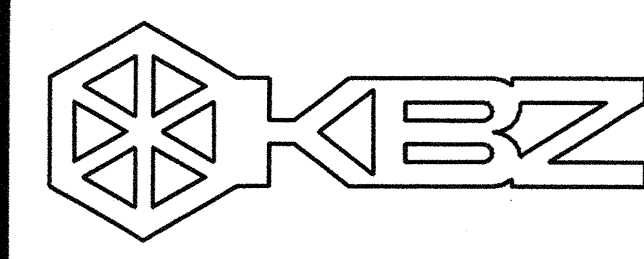


KEYNOTES

- 1 EXISTING EQUIPMENT TO REMAIN, TYP.
- 2 REPLACE & TRIM IMPELLER AS REQUIRED FOR NEW GPM.
- 3 SEE PIPING SCHEMATIC SHEET M4.1 FOR REQUIREMENTS.



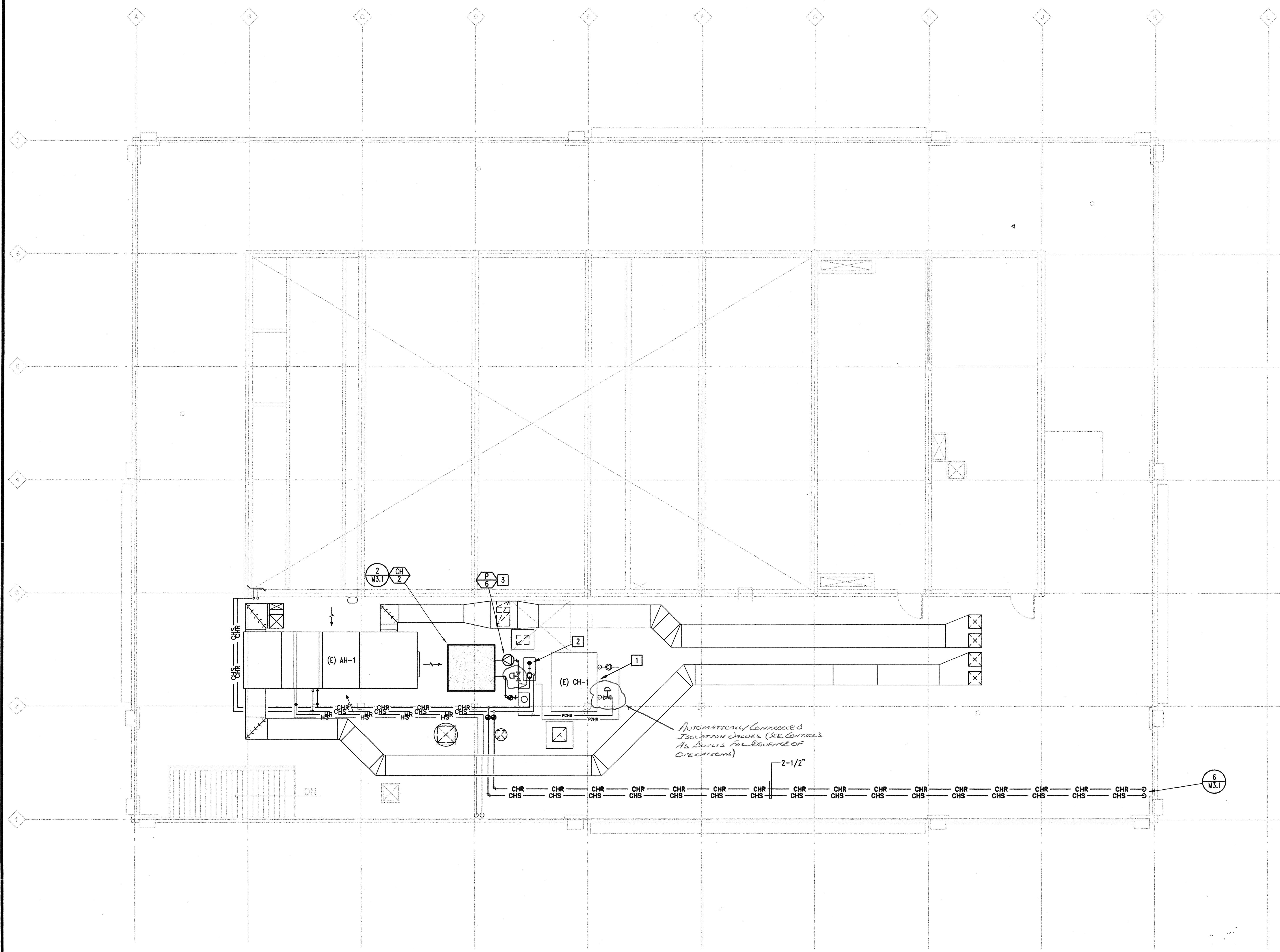
KRUGER BENSEN ZIEMER
ARCHITECTS, INC. AIA
30 W. ARRELLAGA SANTA BARBARA, CA.
805/963.1729 93101

STEVE DOWTY, A.I.A.
PRINCIPAL IN CHARGE

GERALD SHUSTA
PROJECT ARCHITECT

All lines, design arrangements and plans indicated or represented by this drawing are owned by and are the property of Kruger-Bensen-Ziemer. All contracts, and other records, notes and drawings and use on, and in connection with, the specific project. None of such lines, design, arrangements or plans shall be used by or disclosed to any person, firm or corporation for any purpose whatsoever without the written permission of Kruger-Bensen-Ziemer.

MECHANICAL ENGINEERING CONSULTANTS
X80014
821 W. MICHIGANA ST. SUITE A
SANTA BARBARA, CA 93101
Tel: (805) 957-4632



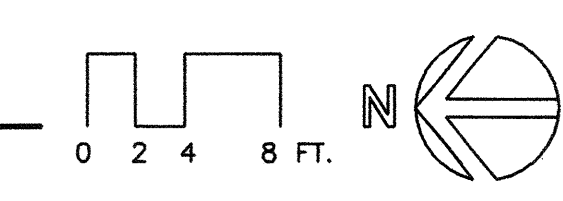
CENTER FOR ADVANCED LEARNING TECHNOLOGY
SKYLINE COLLEGE
SAN MATEO COUNTY COMMUNITY COLLEGE DISTRICT
SAN BRUNO, CALIFORNIA 94066
3300 COLLEGE DRIVE

NO.	DESCRIPTION	DATE	BY
REVISION			

DRAWN	
CHECKED	
DATE	03-21-2001
JOB NO.	98-03
SHEET TITLE	
ROOF MECHANICAL AND DEMOLITION PLAN BLDG. #2	
SHEET	
M 2.8	
OF	



IDENTIFICATION STAMP
DIV. OF THE STATE ARCHITECT
OFFICE OF REGULATION SERVICES
APPL 01-103735
Ren. 11/01
AC: [Signature] FLS: [Signature] SS: [Signature]
DATE: 06/21/01



E:\08-kruger-bensen-ziemer\K0001-4-Skyline\K0001-4-M2_B.dwg, 06/20/2001, 03:46:15 PM, Chris_Elmer.dwg, AutoCAD LT 2000, Plot File: 30x42.in, 1:1