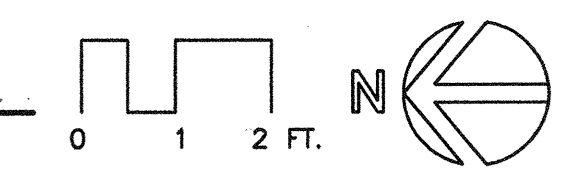
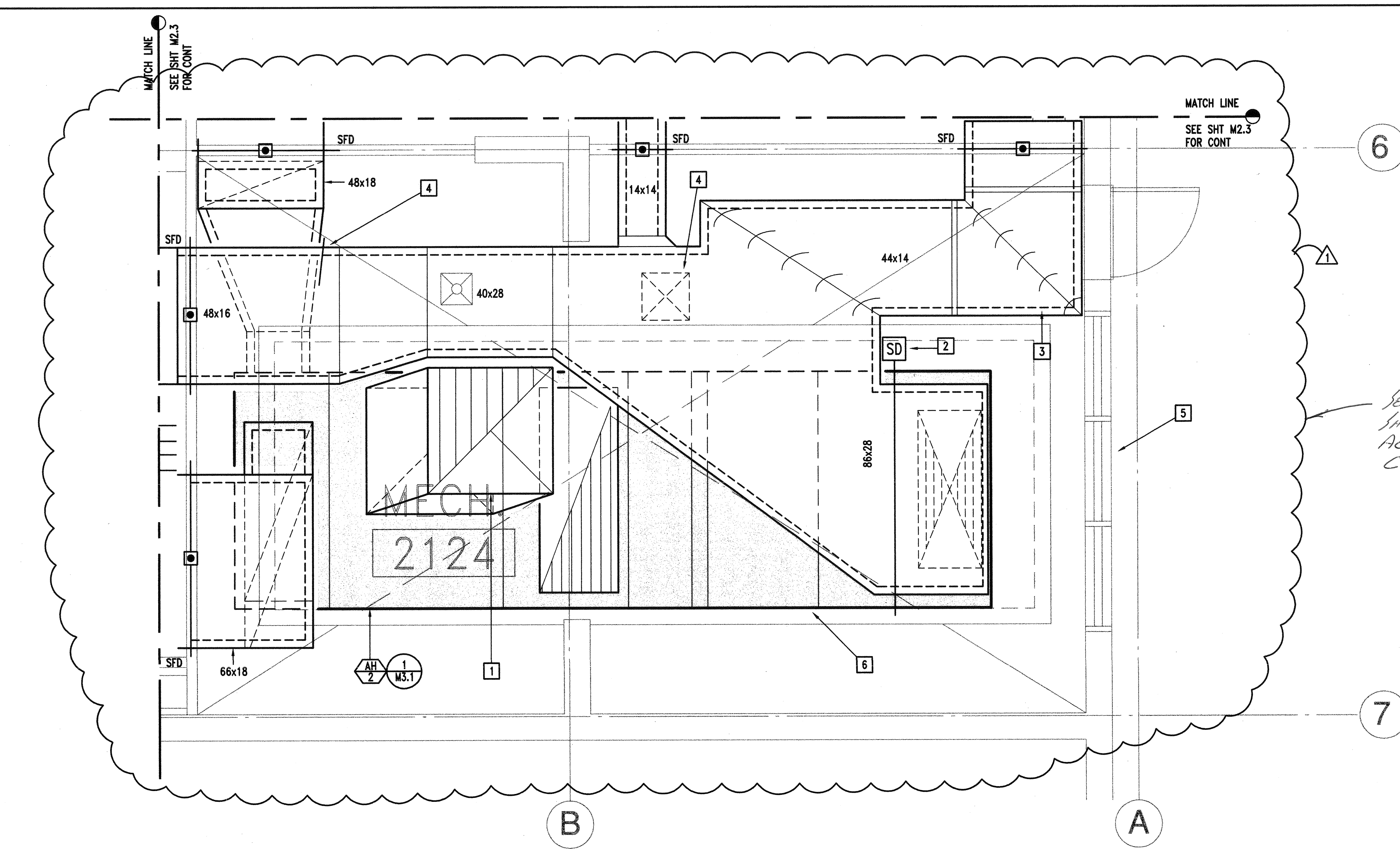


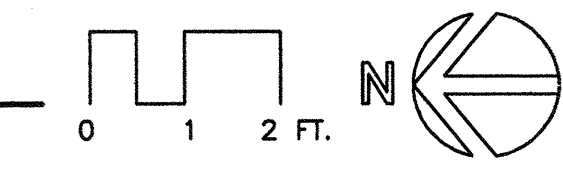
PARTIAL PIPING PLAN
SCALE : 1/2"=1'-0"



- KEYNOTES**
- 1 RAISE GAS AS REQUIRED TO CLEAR (N) DUCTS. ENCASE PIPING IN SEALED CONDUIT WITHIN MECHANICAL ROOM.
 - 2 SEAL (E) FD AND ABANDON (E) W AND V BELOW GROUND.
 - 3 (E) GAS SOV TO REMAIN.
 - 4 REMOVE HEATING PIPING AND PUMP, ETC, AS REQUIRED TO ALLOW AH-2 THROUGH LOUVER OPENING. REPLACE IN NEW LOCATION, SEE CONTROL DIAGRAM & DETAIL 14 ON SHEET M3.1 FOR PIPING REQUIREMENTS.
 - 5 (E) PUMP, 183 GPM.
 - 6 REPLACE (E) MIXING VALVE WITH (N) TO MATCH (E).
 - 7 CHS AND CHR UP TO ROOF.
 - 8 SEE SHEET M2.3 FOR CONT.
 - 9 MANIFOLD COILS AS REQUIRED.
 - 10 REMOVE (E) HEATING PIPING, REPLACE AS SHOWN.

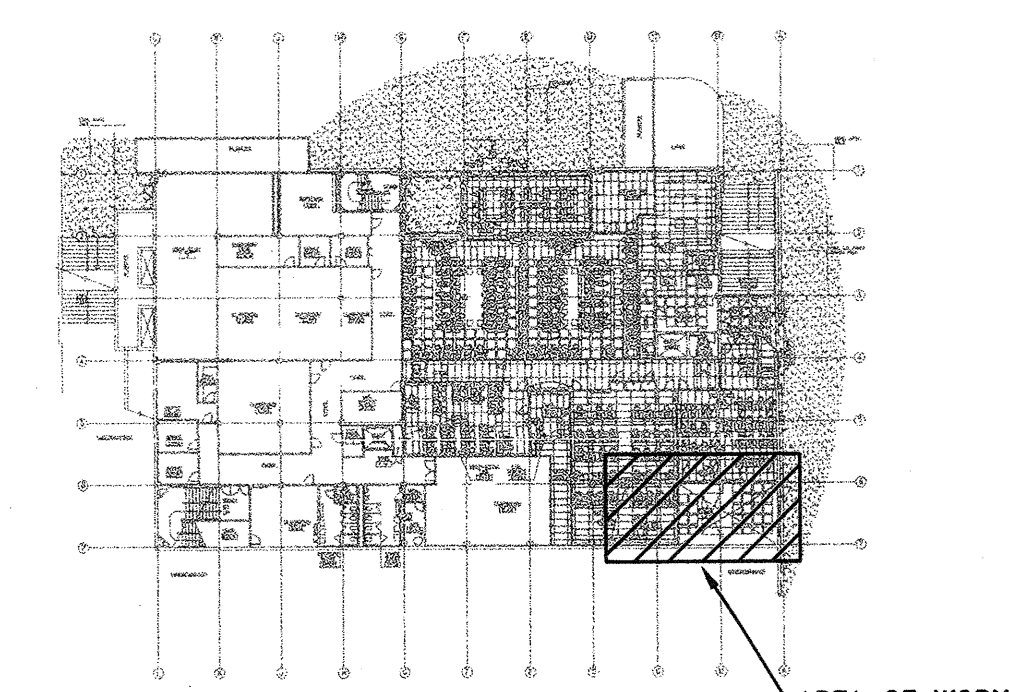


MECHANICAL ROOM PLAN *VOID SEE ATTACHED. NEXT SHT.*
SCALE : 1/2"=1'-0"



- KEYNOTES**
- 1 POC TO (E) 48x48 EXHAUST UP.
 - 2 SMOKE DETECTOR TO SHUTDOWN AH-2 FANS IN EVENT OF SMOKE.
 - 3 2" SOUNDLINING IN MECHANICAL ROOM DUCTS, TYP.
 - 4 18x18 RELIEF DAMPER.
 - 5 REMOVE & REINSTALL LOUVER AS REQUIRED, REPLACE BIRD SCREEN.
 - 6 DEMOUNT UNIT AS REQUIRED.

SEE ATTACHED SUPPLEMENTARY SHEET M2.7 FOR AS-SHOWN ACTUAL MECHANICAL ROOM CONFIGURATION.



KEYPLAN
SCALE : NTS

IDENTIFICATION STAMP
DIV. OF THE STATE ARCHITECT
OFFICE OF REGULATION SERVICES
APPL 01-103735
DATE 08/27/01

KBZ
KRUGER BENSEN ZIEMER ARCHITECTS, INC. AIA
30 W. ARRELLAGA 905/963-1725 SANTA BARBARA, CA 93101
STEVE DOWTY, A.I.A. PRINCIPAL IN CHARGE
GERALD SHUSTA PROJECT ARCHITECT
MECHANICAL ENGINEERING CONSULTANTS
930014
521 W. Michelmore St. Suite A, Santa Barbara, Ca 93101 Tel (805) 957-4632

**CENTER FOR ADVANCED LEARNING TECHNOLOGY
SKYLINE COLLEGE**
SAN MATEO COUNTY COMMUNITY COLLEGE DISTRICT
SAN BRUNO, CALIFORNIA 94066
3300 COLLEGE DRIVE

NO.	DESCRIPTION	DATE	BY
1	BID SET REVISION	10/25/01	AVR
REVISION			

DRAWN	J. SIERRA, T. RAUTIO
CHECKED	AVR
DATE	03-21-2001
JOB NO.	98-03
SHEET TITLE	
MECHANICAL ROOM PLAN AND PARTIAL PIPING PLAN	
SHEET	
M 2.7	
OF	

E:\KB\krugerbensenziemer\K0014-Skyline\sketch\K0014-M2_7.dwg, 10/26/2001 01:18:58 PM, Chris, ACAD2002 ester Final.pcd, Arch E1, 30.4 x 42 in., 1:1