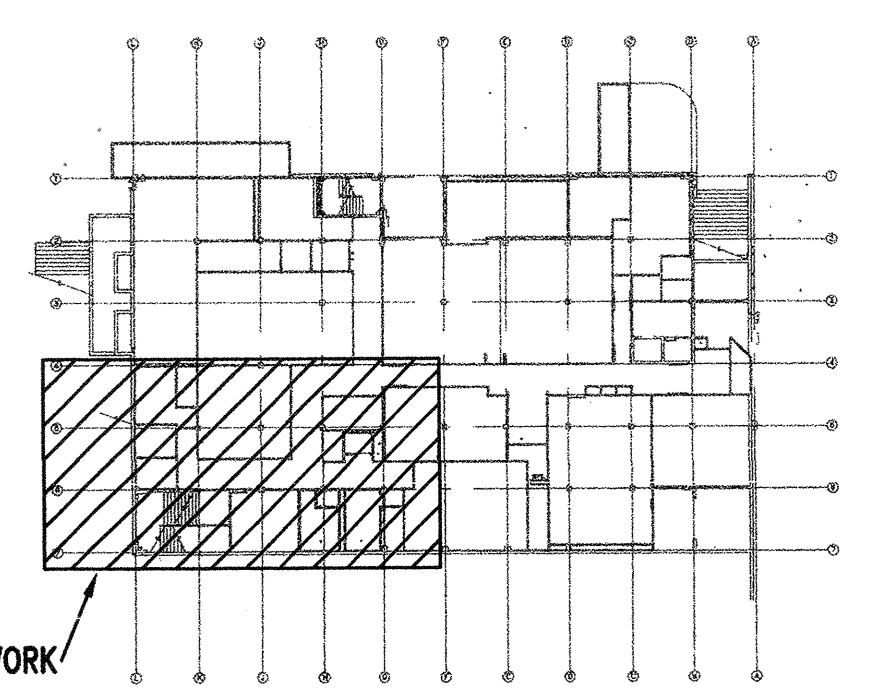


KEYNOTES

- 1 CAP DUCT.
- 2 WIRE (E) ACTUATOR TO RELOCATED TSTAT IN CLASSROOM 2105.
- 3 REPLACE (E) RETURN GRILLE.

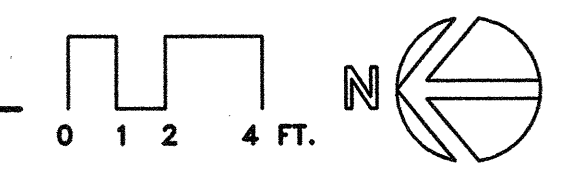
MATCH LINE
SEE SHT M2.5 FOR CONT.

ALL DUCT ACOUSTIC INSULATION LINED
S.D. DMP
REF # 75



KEYPLAN
SCALE: NTS

PARTIAL MECHANICAL FLOOR PLAN - NORTHWEST
SCALE: 1/4"=1'-0"



KRUGER BENSON ZIEMER ARCHITECTS, INC.
30 W. ARRELLAGA SANTA BARBARA, CA 93101
805/963.1726

STEVE DOWTY, A.I.A.
PRINCIPAL IN CHARGE

GERALD SHUSTA
PROJECT ARCHITECT

All ideas, design arrangements and plans indicated or represented by this drawing are hereby set out on the property of Kruger-Benson-Ziemer. All approvals, use, reuse, copies, reprints and drawings for any use not in connection with the specified project, items of such nature, design, arrangement or plans shall be made by or disclosed to any person, firm or corporation for any purpose whatsoever without the written permission of Kruger-Benson-Ziemer.

MEC KR014
MECHANICAL ENGINEERING CONSULTANTS
801 W. Michelson Ave. Santa Barbara, CA 93101
Tel: (805) 957-4832

CENTER FOR ADVANCED LEARNING TECHNOLOGY
SKYLINE COLLEGE
SAN MATEO COUNTY COMMUNITY COLLEGE DISTRICT
3300 COLLEGE DRIVE
SAN BRUNO, CALIFORNIA 94066

NO.	DESCRIPTION	DATE	BY
1	BID SET REVISION	10/25/01	AVR
REVISION			

DRAWN	J. SIERRA, E. MARKHAM
CHECKED	AVR
DATE	03-21-2001
JOB NO.	98-03
SHEET TITLE	
PARTIAL MECHANICAL FLOOR PLAN - NORTHWEST	
SHEET 06	
M 2.6	
OF 50	



IDENTIFICATION STAMP
DIV. OF THE STATE ARCHITECT
OFFICE OF REGULATION SERVICES
APPL 01-103735
Ren. 11/01
DATE 02/27/01

J:\Users\Ziemer\IC0014-Skyline\A01\K00014-M2_6.dwg, 10/26/2001 11:38:50 AM, Chris, ACA\2002\esize Final.pcd, Arch E1 - 30.42 in., 11