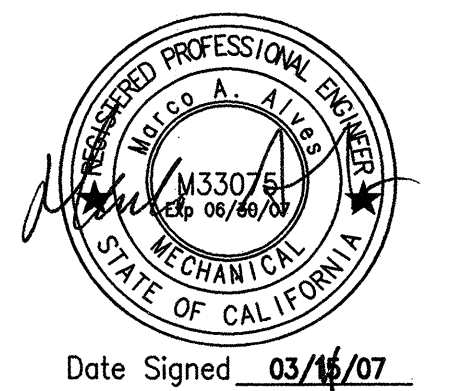


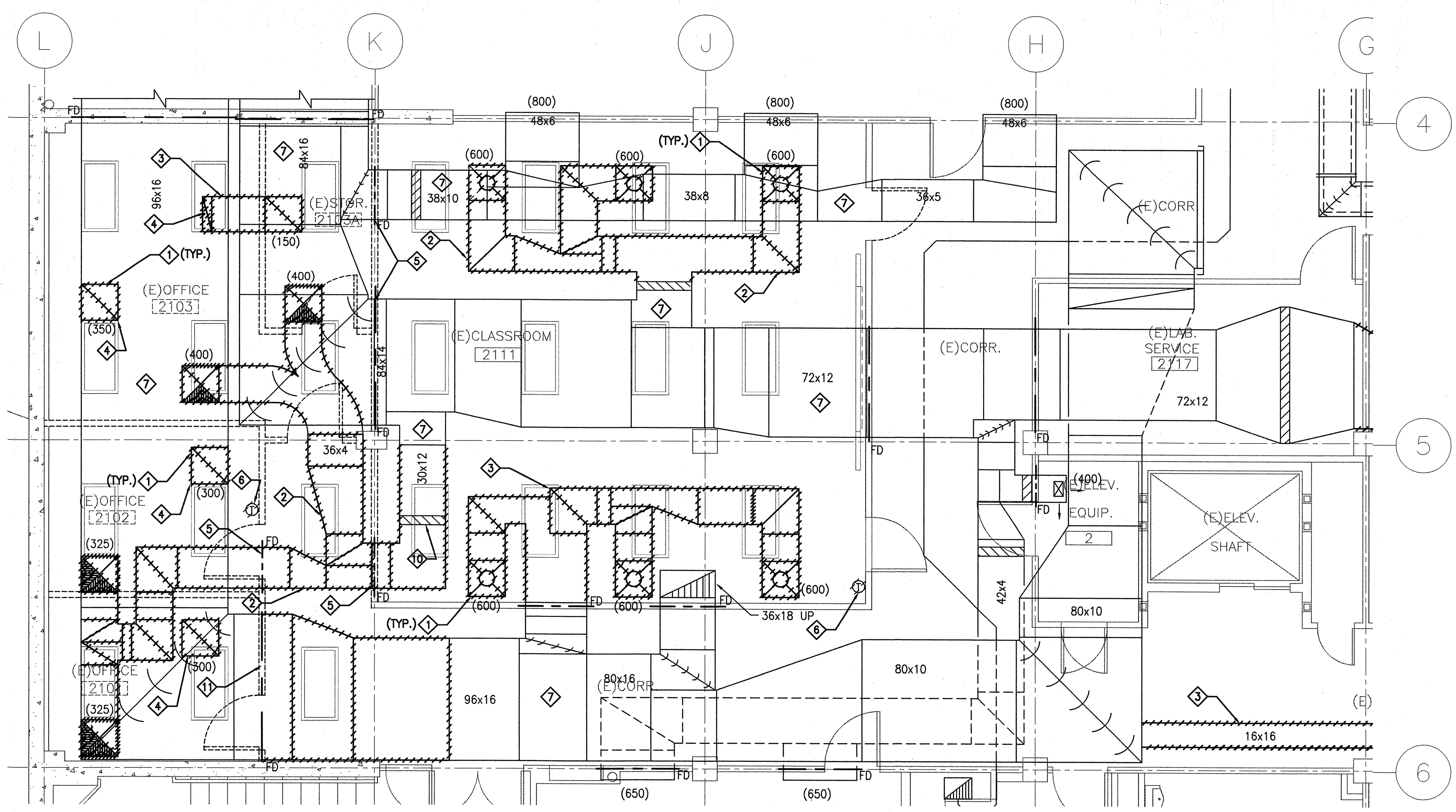
owner
SAN MATEO COUNTY
3401 CSM DRIVE
SAN MATEO CA 94402

architect
STEINBERG ARCHITECTS
603 W. GILMAN STREET
SARASOTA FL 34230

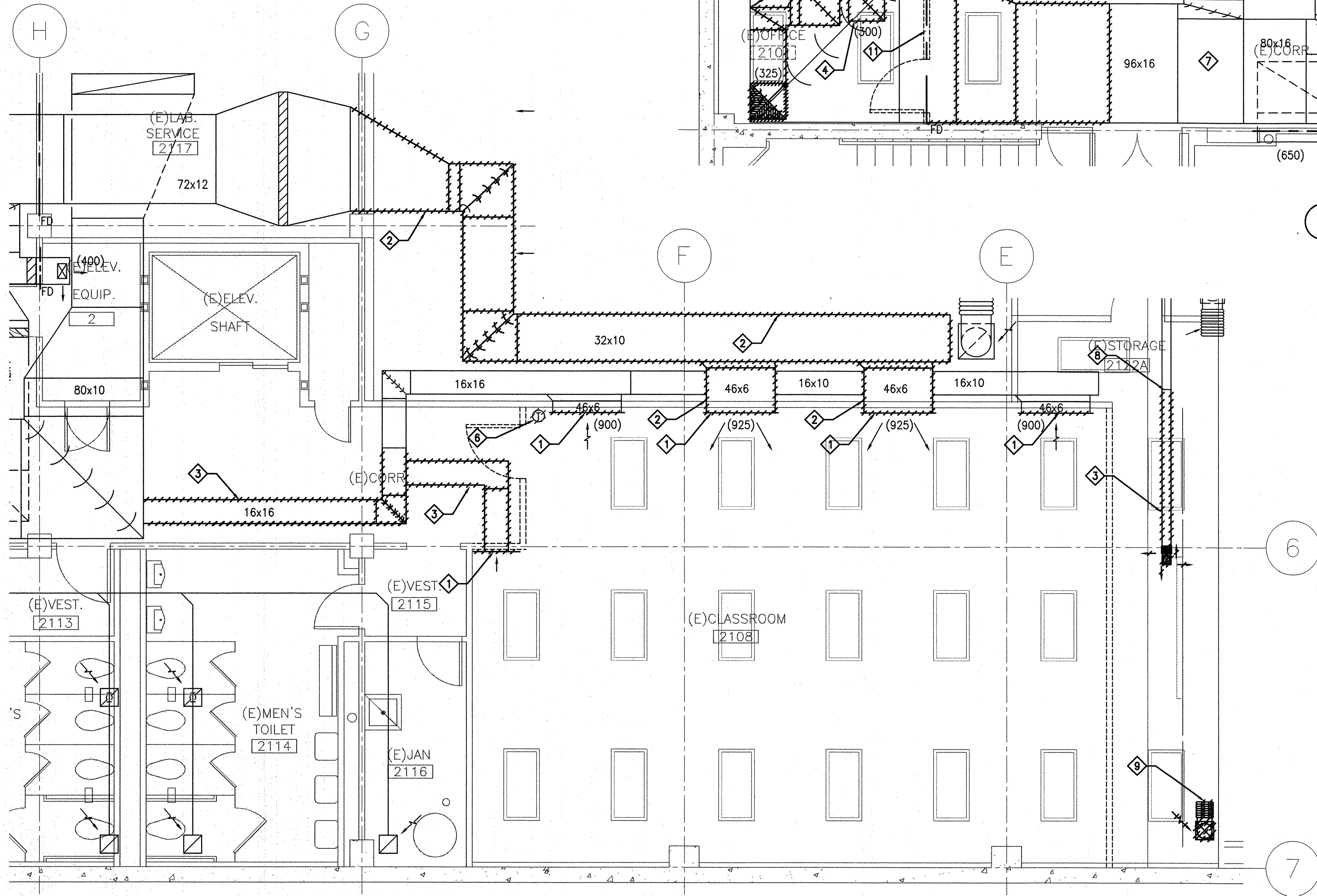
ALFATECH CAMBRIDGE
120 BARTONBERRY STREET, SUITE 210 415-408-0000
SAN FRANCISCO, CALIFORNIA 94104 FAX: 415-798-8000
SAN JOSE • SAN FRANCISCO • NEW YORK • BOSTON
LOS ANGELES • PALO ALTO • SINGAPORE • AUSTRALIA
KIPPAURIE 2002



Date Signed 03/15/07



1 ROOM 2111 MECHANICAL DEMOLITION PLAN
1/4" = 1'-0"



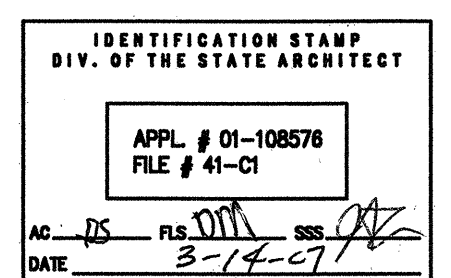
2 ROOM 2108 MECHANICAL DEMOLITION PLAN
1/4" = 1'-0"

DEMOLITION SHEET NOTES

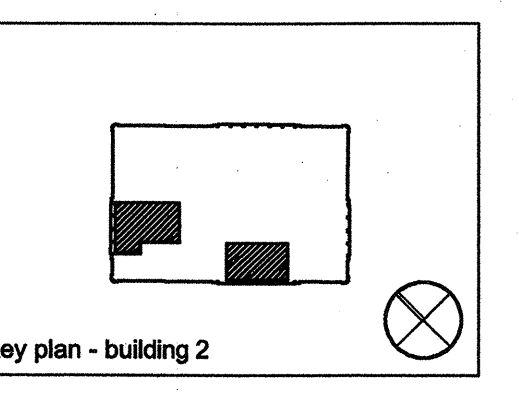
- REFER TO THE PROJECT SPECIFICATIONS AND THE SAN MATEO COMMUNITY COLLEGE DISTRICT STANDARDS AND SPECIFICATIONS FOR ALL INFORMATION NOT SHOWN ON THIS DRAWING.
- CONTRACTOR SHALL VISIT JOB SITE PRIOR TO SUBMISSION OF BID & SHALL BE COGNIZANT OF ALL EXISTING CONDITIONS, EXISTING POINTS OF CONNECTION AND EXISTING DUCT AND PIPE RUNS.
- CONTRACTOR SHALL CONSULT W/ BUILDING ENGINEER ON ALL PHASES OF DEMOLITION WORK. DISPOSE OF ALL MATERIALS PER HIS DIRECTION.
- CONTRACTOR SHALL REMOVE ALL/ANY ABANDONED DUCTWORK, PIPING, AND EQUIPMENT WITHIN PROJECT'S SCOPE OF WORK, EVEN IF NOT SHOWN ON THIS DEMOLITION PLAN. CONSULT WITH BUILDING ENGINEER PRIOR TO CARRYING OUT ANY DEMOLITION WORK NOT SPECIFICALLY SHOWN ON THESE DOCUMENTS.
- CONTRACTOR SHALL REMOVE ANY FIRE AND/OR SMOKE DAMPERS LOCATED AT PARTITIONS TO BE REMOVED AND ANY ASSOCIATED DAMPER CONTROLS. WHERE DAMPERS ARE REMOVED BUT DUCTWORK REMAINS THE CONTRACTOR SHALL REPAIR DUCTWORK (OR PROVIDE NEW) TO MEET PROJECT SPECIFICATIONS. EXISTING FIRE DAMPERS TO REMAIN IN AREAS OF WORK SHALL BE INSPECTED AND TESTED. CONTRACTOR SHALL REPORT TO ARCHITECT AND ENGINEER OF RECORD ON FIRE DAMPERS NEEDING REPLACEMENT.
- SEE DRAWING M2.1 FOR ALL NEW WORK.

KEY NOTES

- 1 REMOVE ALL (E) AIR OUTLETS IN ROOMS 2101, 2102, 2103, 2103A, 2106, AND 2108 AS SHOWN.
- 2 REMOVE (E) SUPPLY DUCTWORK UP TO (E) HW COIL.
- 3 REMOVE (E) RETURN DUCTWORK UP TO DUCT MAIN.
- 4 PATCH (E) RETURN DUCTWORK TO REGISTER CONNECTION(S). SEAL DUCTWORK TO MEET PROJECT SPECIFICATIONS.
- 5 REMOVE (E) FD. IF DUCT IS TO REMAIN REPLACE FD SECTION WITH NEW SHEET METAL DUCTWORK PER SPECIFICATIONS.
- 6 REMOVE (E) THERMOSTATS.
- 7 REMOVE ALL EXISTING DUCTWORK INSULATION IN ROOMS 2101, 2102, 2103, 2103A, AND 2106. REPAIR DUCTWORK TO REMAIN AS REQUIRED TO MEET PROJECT SPECIFICATIONS, COORDINATE PAINTING OF DUCTWORK TO REMAIN WITH ARCHITECTURAL PLANS.
- 8 CAP (E) SUPPLY DUCT.
- 9 REMOVE (E) TRANSFER DUCT AND AIR OUTLET.
- 10 RELOCATE (E) HOT WATER COIL AND ASSOCIATED HW PIPE, AND CONTROL VALVE. SEE M2.1 FOR NEW COIL LOCATION.
- 11 REMOVE AND RELOCATE (E) FD, SEE M2.1 FOR NEW LOCATION.



02.02.07	DSA SUBMITTAL	
	DSA BACKCHECK	
rev.	date	issue



STEINBERG ARCHITECTS
project no: 06044 date: 03/15/07
drawn by: MA checked by: JC
scale: 1/4" = 1'-0"

MECHANICAL DEMOLITION PLANS

M2.1D

Copyright 2007 Steinberg Architects All Rights Reserved. These Plans and Specifications are intended for the sole benefit of 2007 Skyline College and may not be used, copied, or reproduced in any form without the express written consent of Steinberg Architects.

P:\000000\020727\020727.dwg 03/15/07 10:23:11 AM 3/15/07 10:23:11 AM