

UNIVERSITY OF CALIFORNIA
 DIVISION OF THE STATE ARCHITECT
 OFFICE OF REGULATION SERVICES
 APP. NO. _____
 AC: _____
 DATE: _____
 FILE NO. _____
 Division of the State Architect
 125 Clay St., Suite 1001
 Oakland, CA 94612

HVAC FLOOR PLAN
BLDG 13
SKYLINE COLLEGE SWING SPACE
PERMIT PACKAGE #3
SKYLINE COLLEGE
3300 COLLEGE DRIVE
SAN BRUNO, CA 94066

REVISIONS

NO.	ITEM	DATE
AD	REVIS	3/4/05

CLIENT APPROVAL:
 DRAWN BY: MN
 CHECKED BY: MN
 JOB NO: 2145.002
 DATE: 13 FEB 2004

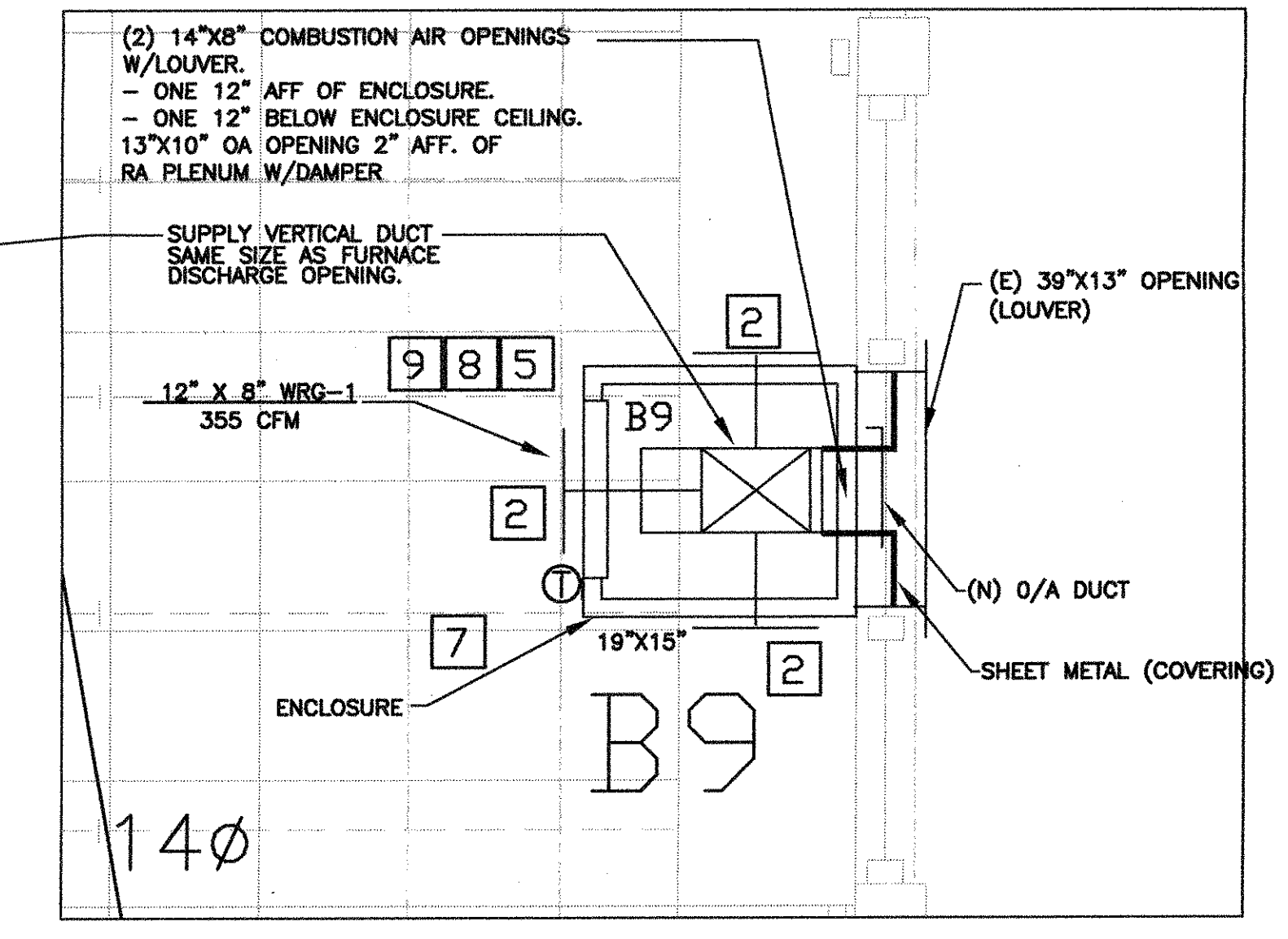
SHEET NOTES

- 1. REPLACE ALL OF THE EXISTING THERMOSTATS WITH NEW ELECTRONIC PROGRAMMABLE THERMOSTAT.

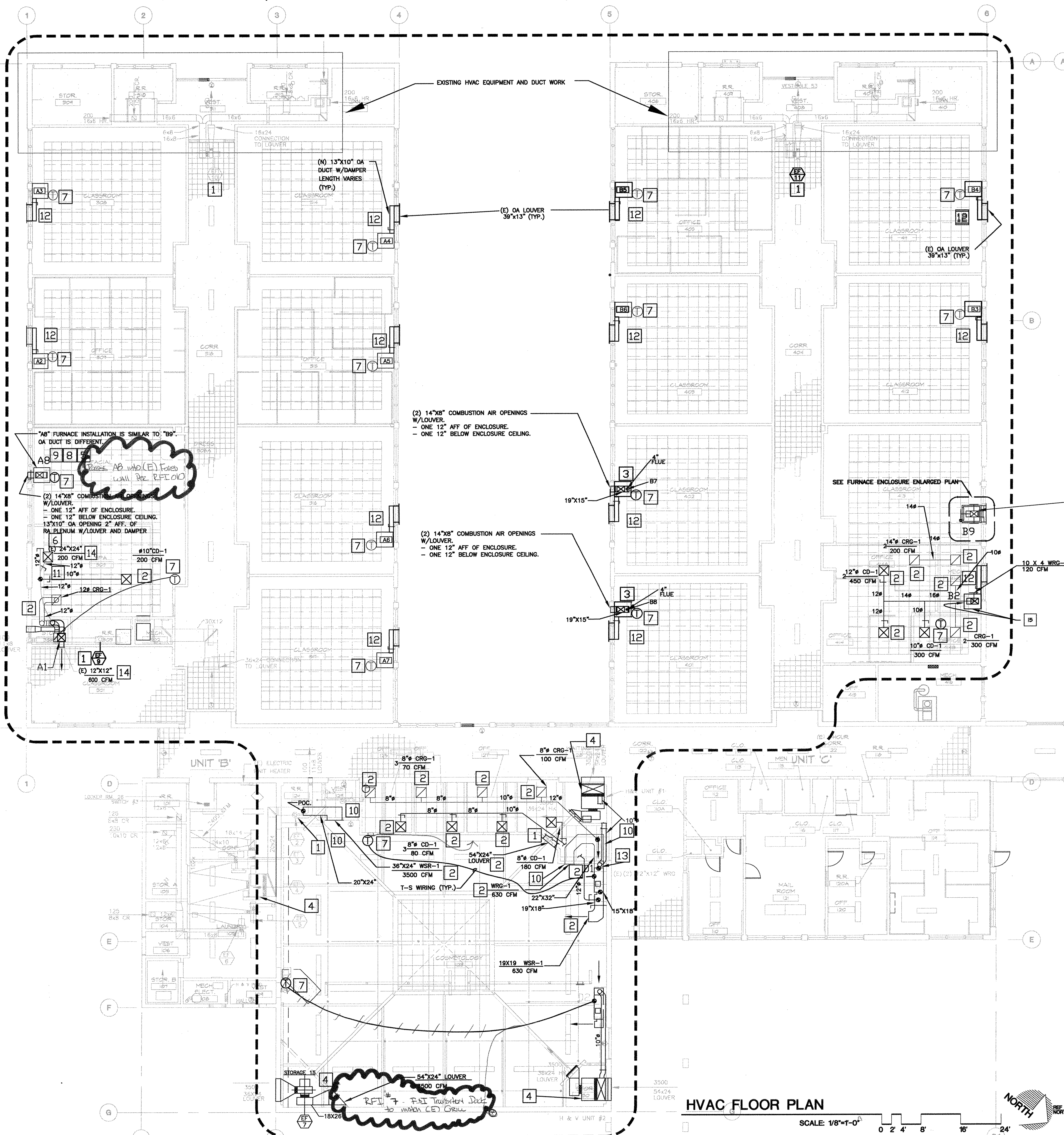
KEYED NOTES

- 1. REFURBISH OR REPLACE EXISTING EXHAUST FAN
- 2. INSTALL NEW CEILING DIFFUSER/GRILLE, HALL SUPPLY AIR REGISTER/ HALL RETURN GRILLE AND NEW DUCT
- 3. INSTALL NEW VERTICAL FURNACE WHEN SUPPLY AIR FLENUM. CONNECT TO THE EXISTING FLUE PIPE, POWER, SUPPLY REGISTERS, GAS LINE, AND NEW THERMOSTAT.
- 4. REFURBISH EXISTING EXHAUST/SUPPLY FAN
- 5. CONNECT NEW UNITS TO POWER, THERMOSTAT AND GAS LINE.
- 6. BALANCE AIR FLOW OF THE EXISTING DIFFUSER ACCORDING TO CFM VALUES.
- 7. INSTALL NEW HALL MOUNTED THERMOSTAT AND CONNECT IT TO THE CORRESPONDING NEW/EXISTING FURNACE.
- 8. CONNECT NEW OUTSIDE AIR, COMBUSTION AIR OPENINGS.
- 9. INSTALL NEW VERTICAL FURNACE IN NEW ENCLOSURE WITH SUPPLY DUCT, SUPPLY AIR REGISTERS AND RETURN AIR GRILLES SIMILAR TO EXISTING UNITS AT THE OTHER ROOMS.
- 10. INSTALL NEW RETURN/ EXHAUST AIR GRILLE AND DUCTWORK.
- 11. NEW DAMPER ON EXISTING DUCT.
- 12. PROVIDE NEW DUCT WITH VOLUME DAMPER AND CONNECT EXISTING OA OPENING TO THE RETURN AIR FLENUM.
- 13. RECONNECT THE OA DUCT TO NEW RA. DUCT.
- 14. BALANCE TIRE (E) SUPPLY DIFFUSER- / REGISTER PER INDICATED AIR FLOW.
- 15. CAP EXISTING AIR OUTLET AT CUT SIDE.

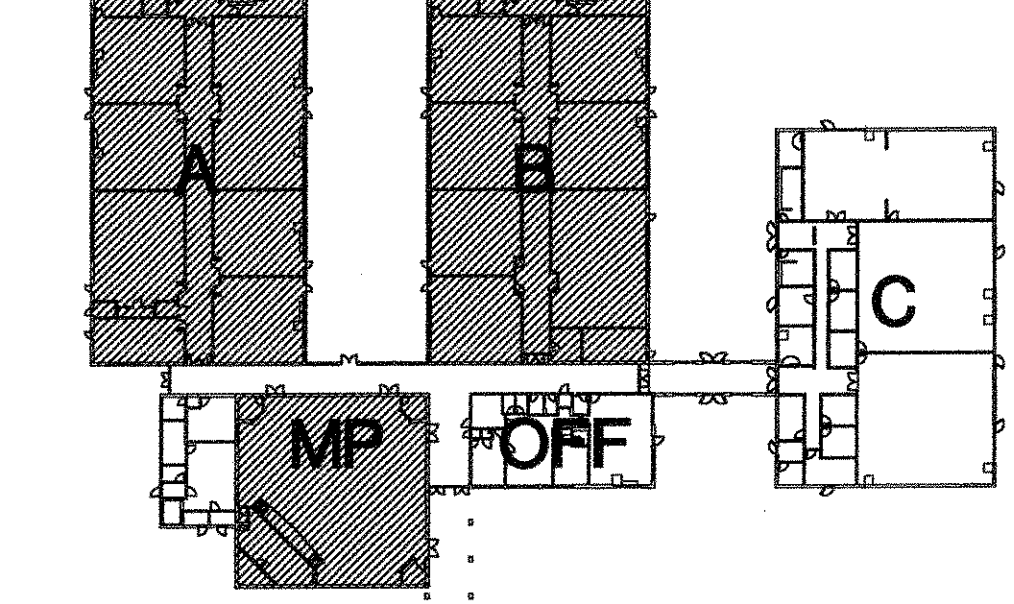
RFI #2 Fabricate & Drawshop to check CE) utilities



HVAC FLOOR PLAN



KEY PLAN



"A8" FURNACE INSTALLATION IS SIMILAR TO "B9". OA DUCT IS DIFFERENT.

(2) 14"x8" COMBUSTION AIR OPENINGS W/LOUVER.
 - ONE 12" AFF OF ENCLOSURE.
 - ONE 12" BELOW ENCLOSURE CEILING.
 13"x10" OA OPENING 2" AFF. OF RA. FLENUM W/LOUVER AND DAMPER

(2) 14"x8" COMBUSTION AIR OPENINGS W/LOUVER.
 - ONE 12" AFF OF ENCLOSURE.
 - ONE 12" BELOW ENCLOSURE CEILING.

(2) 14"x8" COMBUSTION AIR OPENINGS W/LOUVER.
 - ONE 12" AFF OF ENCLOSURE.
 - ONE 12" BELOW ENCLOSURE CEILING.

RFI #7 Fabricate & Drawshop to check CE) utilities