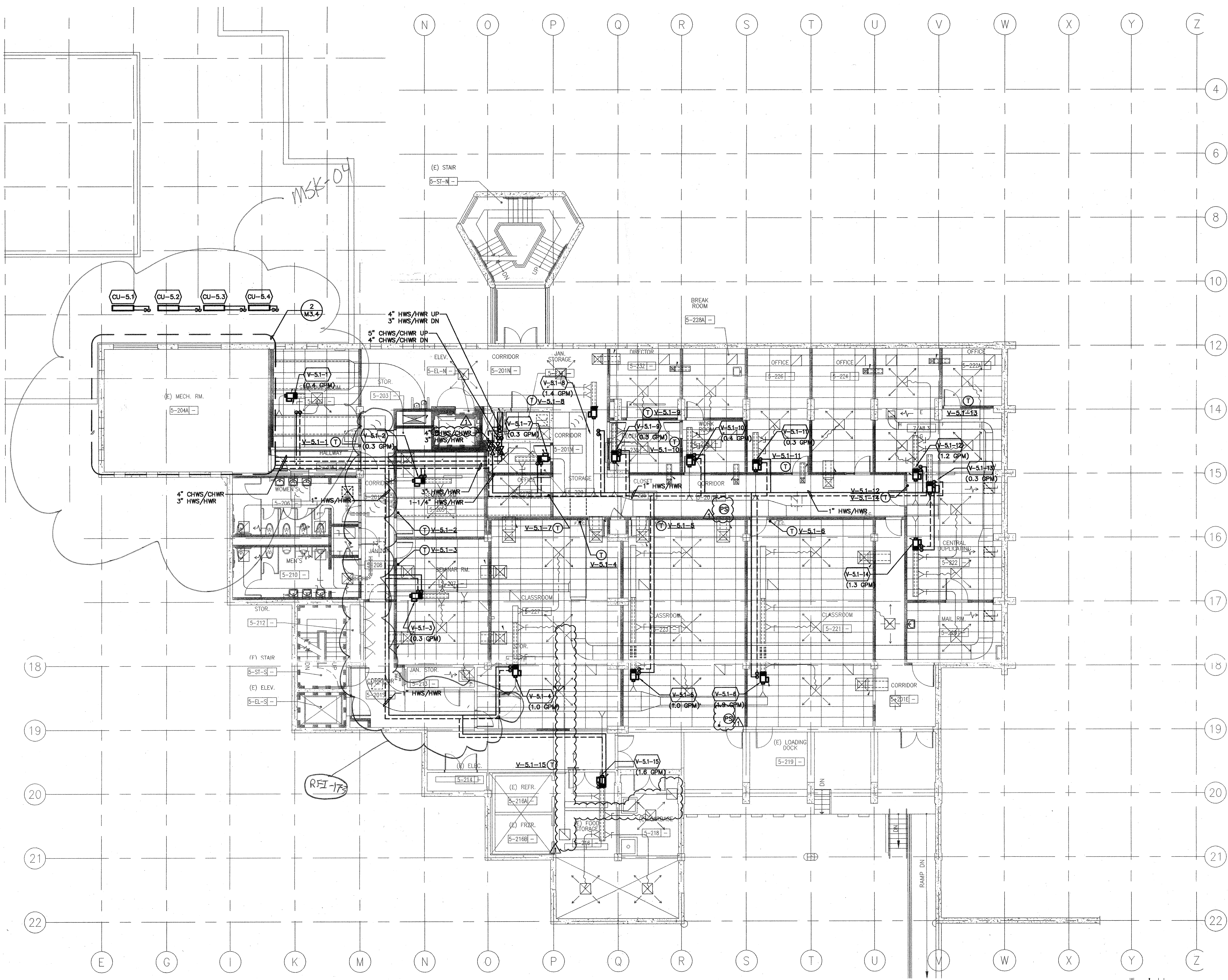


GENERAL SHEET NOTES

A. FOR VALVE PIPING AND VALVE ARRANGEMENT, SEE DETAIL 3 ON SHEET M601.



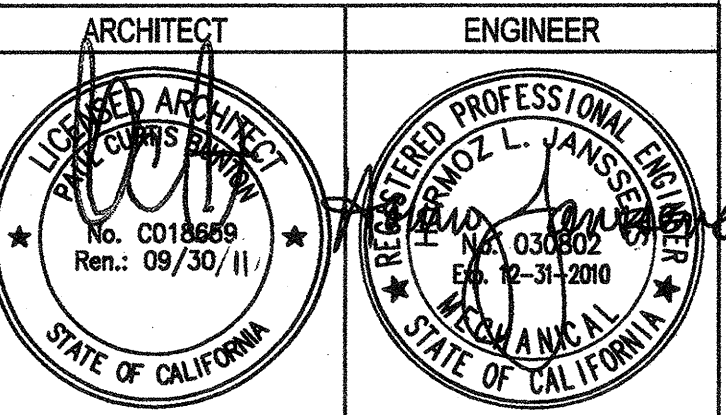
1 MECHANICAL HYDRONIC PLAN - SECOND FLOOR
 SCALE: 1/8"=1'-0"



architecture
 planning
 interiors

Bunton Clifford Associates, Inc.
 210 Hammond Ave.
 Fremont, California 94539
 [T] 510.445.1000
 [F] 510.445.1005
 www.BCAincOnline.com

PROJECT 2007-0731
 CONTACT Omar Hawlt
INTERFACE
 ENGINEERING
 717 Market Street
 Suite 500
 San Francisco, CA 94103
 TEL 415.489.7240
 FAX 415.489.7289
 www.interfaceengineering.com



- GENERAL NOTES
- This sheet is part of a set and is not to be used alone.
 - This sheet is not to be used for construction unless the architect's stamp and signature appear on the drawings and the status box indicates drawings have been released for construction.
 - These plans and prices thereof, as instruments of service, are owned by the architect and are for use on this project only. Reproduction and/or distribution without the prior written consent of the architect is forbidden.
 - Copyright Bunton Clifford Associates, 2007

REVISIONS	REMARKS	DATE
1	ADDENDUM NO. 1	09/18/09

DRAWING STATUS	DATE
● DISA PLAN CHECK	09/29/08
● DISA BACK CHECK	01/22/09
● BIDDING (RFD #28592)	09/18/09
○ CONSTRUCTION	

FILE NO. 41-C1
 DIV. OF THE STATE ARCHITECT
 01- 110074
 AC: PLS: SS: _____
 DATE: _____

**BUILDINGS 5 & 6
 RENOVATIONS**
 San Mateo County Community
 College District

BID ADDENDA
 APPROVED
 DIV. OF THE STATE ARCHITECT
 AC 01 PLS RC SS 186
 APPL NO. 110074 DATE 2/17/10

CAÑADA COLLEGE
 4200 Farm Hill Boulevard
 Redwood City, CA 94061

MECHANICAL
 HYDRONIC PLAN
 SECOND FLOOR

Date 08/29/08 Drawing Number
 Scale AS NOTED **M2.2h**
 Project Number 07013