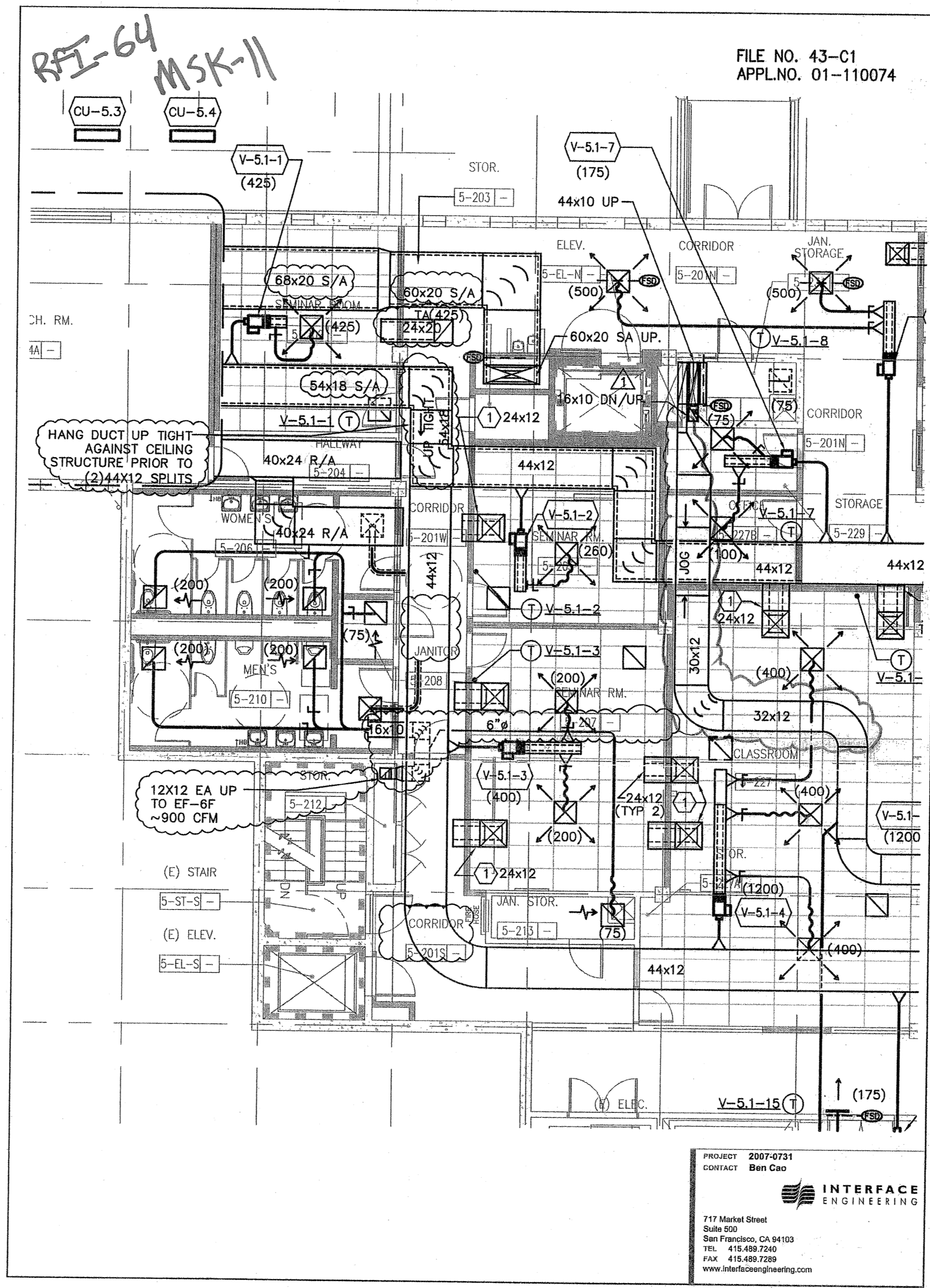


BCA ARCHITECTURE PLANNING INTERIORS
 210 Homewood Ave., Fremont, California 94539
 TEL: 510.445.1000 FAX: 510.445.1000

INTERFACE ENGINEERING
 717 Market Street, Suite 500, San Francisco, CA 94103
 TEL: 415.485.7280 FAX: 415.485.7280
 www.interfaceengineering.com

PROJECT: 2007-0731
 CONTRACT: Ben Cao

DATE: 05/31/10
 SCALE: 1/8" = 1'-0"
 PROJECT NUMBER: MSK-18
 DRAWING NUMBER: ASI-003

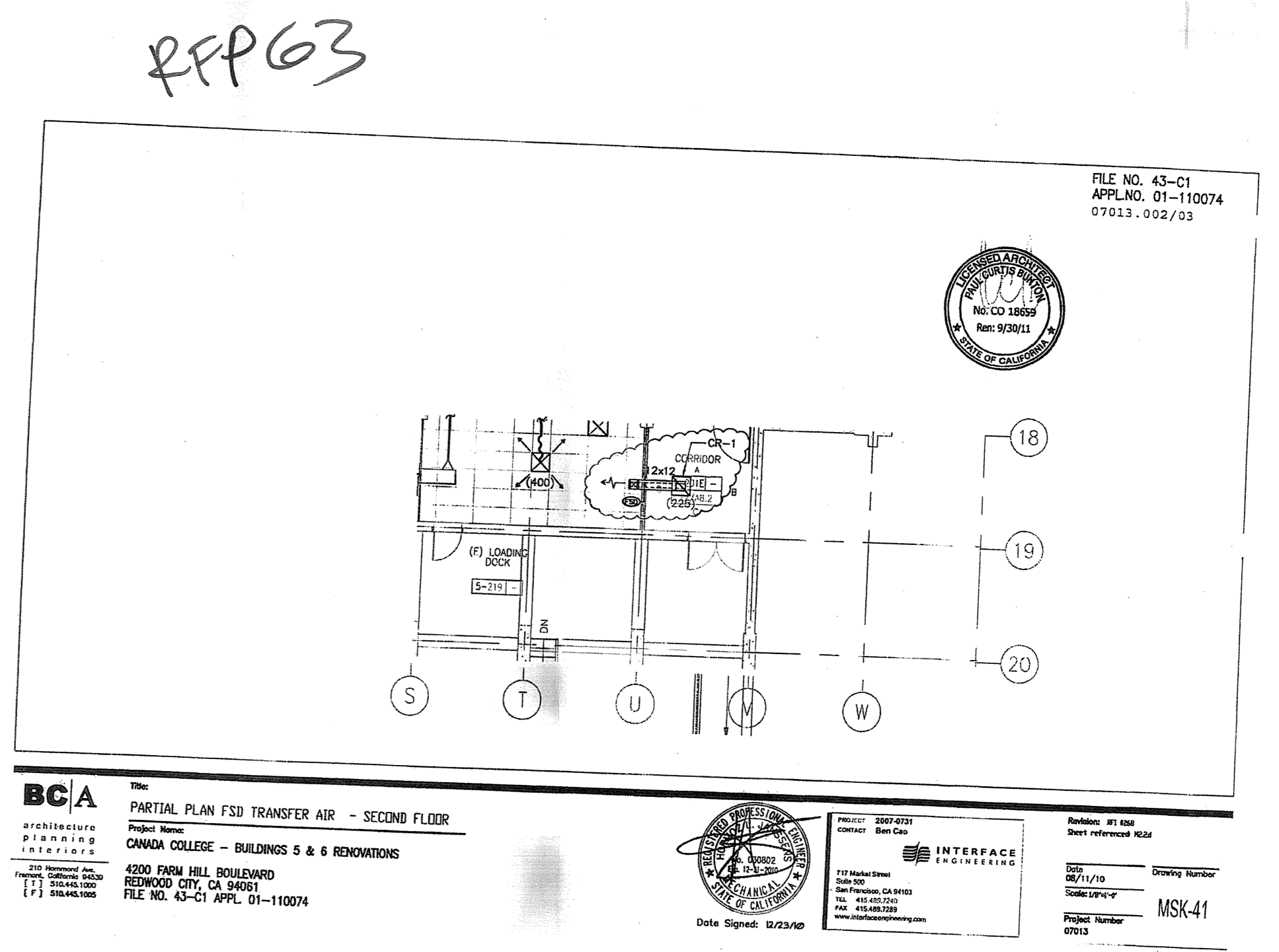


BCA ARCHITECTURE PLANNING INTERIORS
 210 Homewood Ave., Fremont, California 94539
 TEL: 510.445.1000 FAX: 510.445.1000

INTERFACE ENGINEERING
 717 Market Street, Suite 500, San Francisco, CA 94103
 TEL: 415.485.7280 FAX: 415.485.7280
 www.interfaceengineering.com

PROJECT: 2007-0731
 CONTRACT: Ben Cao

DATE: 04/21/10
 SCALE: 1/8" = 1'-0"
 PROJECT NUMBER: MSK-11
 DRAWING NUMBER: RFI-0064 & RFI-0014

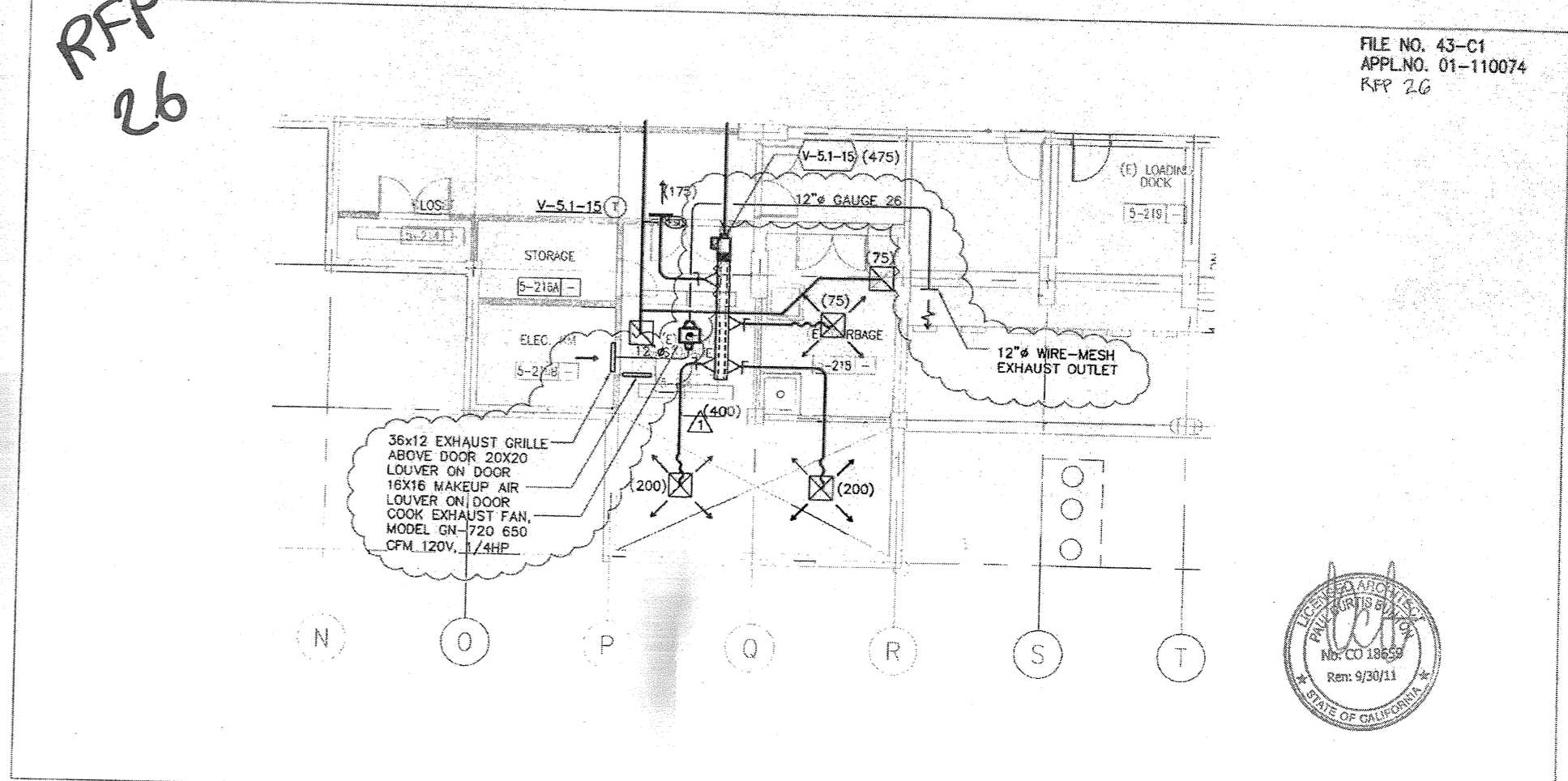


BCA ARCHITECTURE PLANNING INTERIORS
 210 Homewood Ave., Fremont, California 94539
 TEL: 510.445.1000 FAX: 510.445.1000

INTERFACE ENGINEERING
 717 Market Street, Suite 500, San Francisco, CA 94103
 TEL: 415.485.7280 FAX: 415.485.7280
 www.interfaceengineering.com

PROJECT: 2007-0731
 CONTRACT: Ben Cao

DATE: 04/21/10
 SCALE: 1/8" = 1'-0"
 PROJECT NUMBER: MSK-41
 DRAWING NUMBER: PARTIAL PLAN FSD TRANSFER AIR - SECOND FLOOR

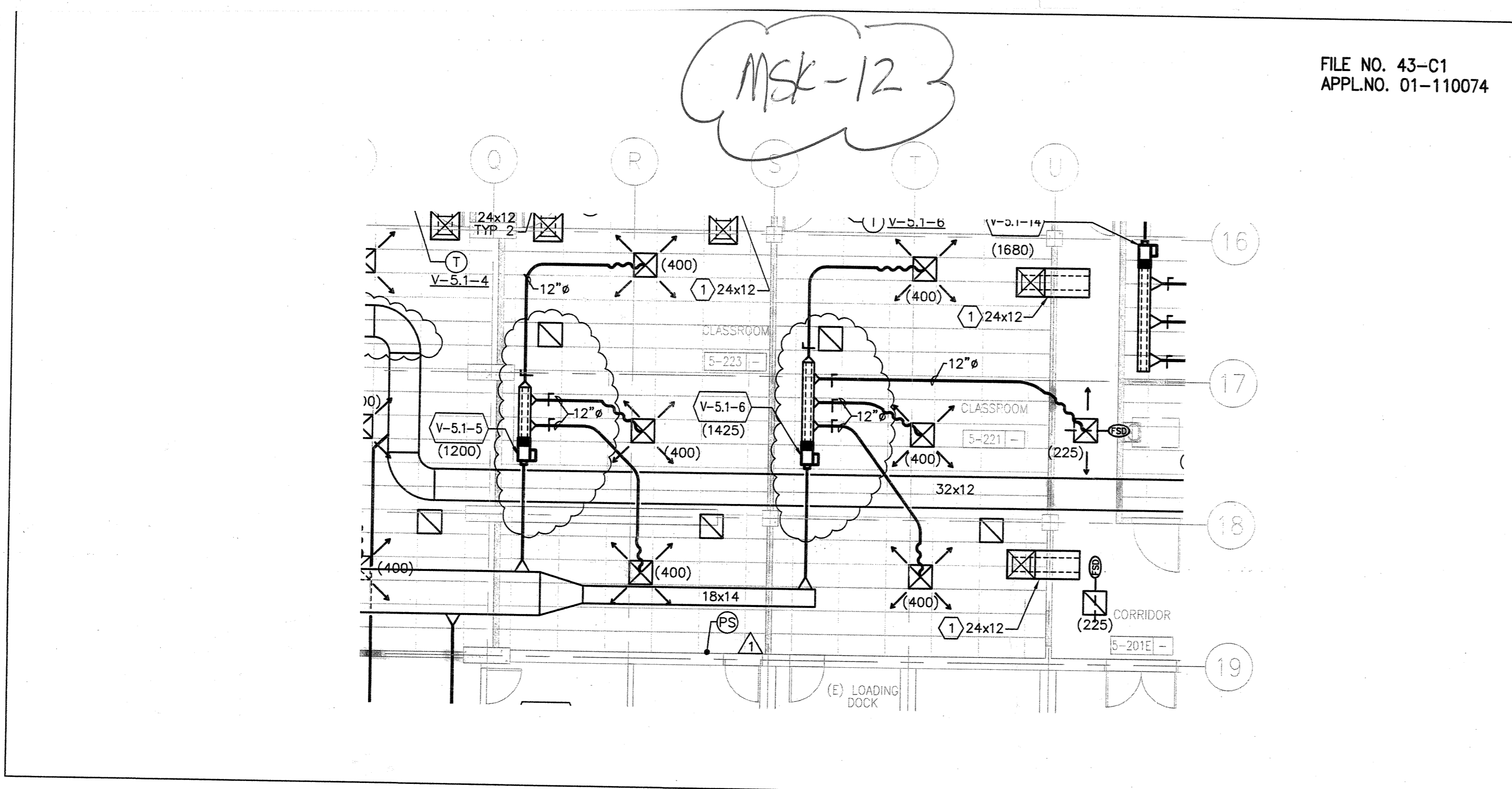


BCA ARCHITECTURE PLANNING INTERIORS
 210 Homewood Ave., Fremont, California 94539
 TEL: 510.445.1000 FAX: 510.445.1000

INTERFACE ENGINEERING
 717 Market Street, Suite 500, San Francisco, CA 94103
 TEL: 415.485.7280 FAX: 415.485.7280
 www.interfaceengineering.com

PROJECT: 2007-0731
 CONTRACT: Ben Cao

DATE: 04/21/10
 SCALE: 1/8" = 1'-0"
 PROJECT NUMBER: MSK-22
 DRAWING NUMBER: MECHANICAL DUCT WORK PLAN - SECOND FLOOR

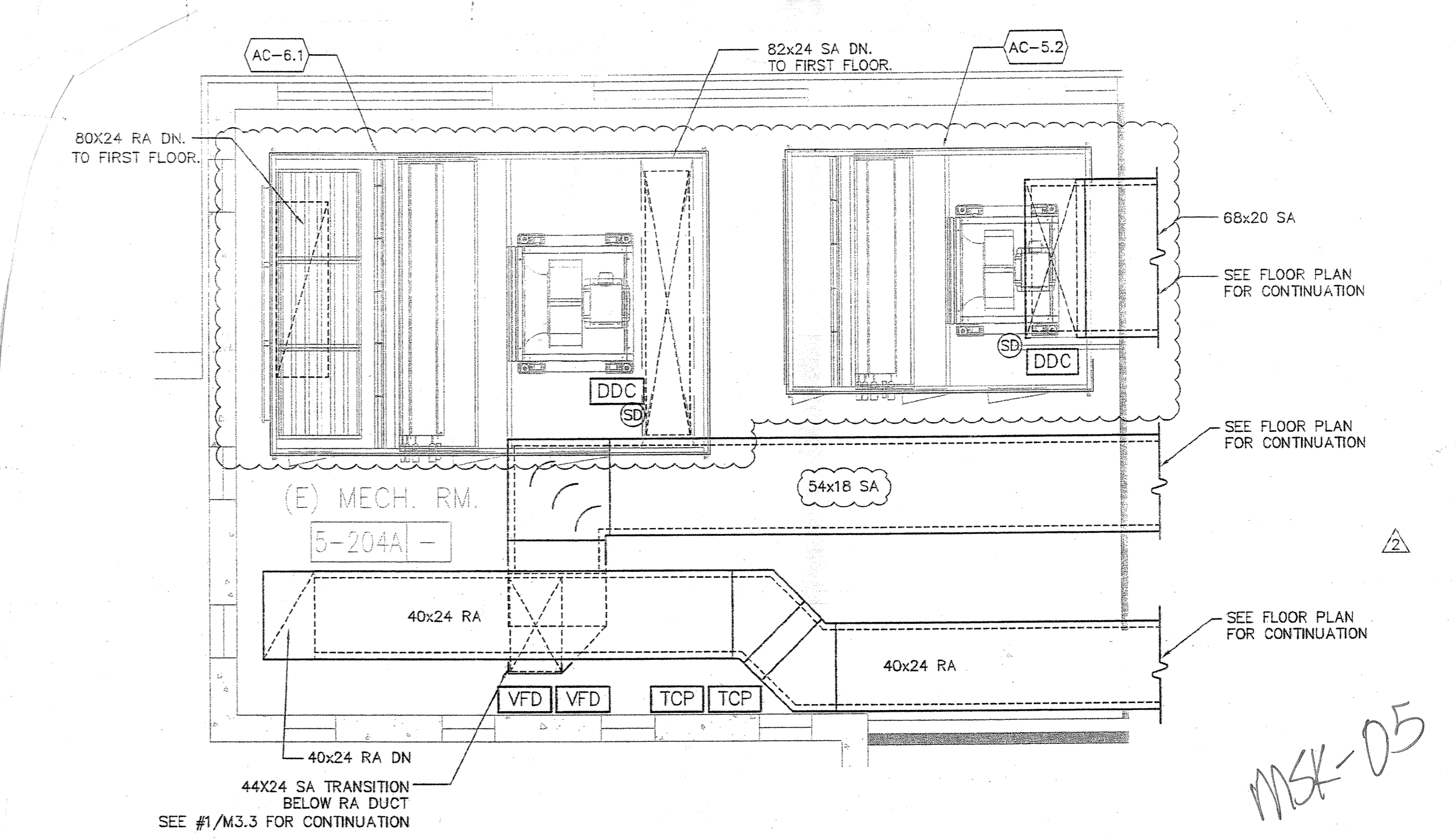


BCA ARCHITECTURE PLANNING INTERIORS
 210 Homewood Ave., Fremont, California 94539
 TEL: 510.445.1000 FAX: 510.445.1000

INTERFACE ENGINEERING
 717 Market Street, Suite 500, San Francisco, CA 94103
 TEL: 415.485.7280 FAX: 415.485.7280
 www.interfaceengineering.com

PROJECT: 2007-0731
 CONTRACT: Ben Cao

DATE: 04/21/10
 SCALE: 1/8" = 1'-0"
 PROJECT NUMBER: MSK-12
 DRAWING NUMBER: CLARIFICATION



BCA ARCHITECTURE PLANNING INTERIORS
 210 Homewood Ave., Fremont, California 94539
 TEL: 510.445.1000 FAX: 510.445.1000

INTERFACE ENGINEERING
 717 Market Street, Suite 500, San Francisco, CA 94103
 TEL: 415.485.7280 FAX: 415.485.7280
 www.interfaceengineering.com

PROJECT: 2007-0731
 CONTRACT: Ben Cao

DATE: 05/11/10
 SCALE: 1/8" = 1'-0"
 PROJECT NUMBER: MSK-05
 DRAWING NUMBER: ENLARGED MECHANICAL DUCTWORK PLAN - SECOND FLOOR