

SHEET NOTES

1. REMOVE EXISTING PLENUMS CONNECTING TO EXISTING LOUVER AND RELATED DUCT AS SHOWN TO ALLOW FOR THE REMOVAL OF THE EXISTING LOUVER AND THE INSTALLATION OF A NEW ELECTRICAL LOAD CENTER. NEW PLENUMS AND RELATED DUCT ARE TO BE INSTALLED TO MATCH THE EXISTING INSTALLATION.
2. REMOVE EXISTING 16" DUCT.
3. EXISTING SUPPLY FAN TO REMAIN.
4. EXISTING FAN COIL UNIT TO REMAIN.
5. TWO (2) 24"x24"x8" DEEP PLENUMS, ONE (1) ABOVE AND ONE (1) BELOW, ARE TO CONNECT TO THE LOUVER AS HIGH AS POSSIBLE. THE UPPER 24"x24"x8" PLENUM IS TO HAVE A SMOOTH SQUARE TO ROUND TRANSITION FROM 24"x24" TO 12" AND CONNECT TO THE EXISTING 12" DUCT. THE LOWER 24"x24"x8" PLENUM IS TO HAVE A SMOOTH SQUARE TO ROUND TRANSITION FROM 24"x24" TO 14" AND IS TO CONNECT TO THE EXISTING 14" DUCT.
6. 36"x36"x8" DEEP PLENUM IS TO CONNECT TO THE LOUVER AS HIGH AS POSSIBLE. PROVIDE A SMOOTH SQUARE TO ROUND TRANSITION FROM 36"x36" TO 16" AND CONNECT TO THE EXISTING 16" DUCT.
7. 24"x24"x8" DEEP PLENUM IS TO CONNECT TO THE LOUVER AS HIGH AS POSSIBLE. PROVIDE A SMOOTH SQUARE TO ROUND TRANSITION FROM 24"x24" TO 12" AND CONNECT TO THE EXISTING 12" DUCT.
8. 30"x24"x8" DEEP PLENUM IS TO CONNECT TO THE LOUVER AS HIGH AS POSSIBLE. PROVIDE A SMOOTH SQUARE TO ROUND TRANSITION FROM 30"x24" TO 18" AND CONNECT TO THE EXISTING 18" DUCT.
9. INSTALL NEW 16" DUCT TO AVOID ROUTING ANY DUCT OVER ELECTRICAL LOAD CENTER.

IDENTIFICATION STAMP  
DIVISION OF THE STATE ARCHITECT  
APPLICATION NUMBER 01-111618  
AC \_\_\_\_\_ FL3 \_\_\_\_\_ BS \_\_\_\_\_  
DATE \_\_\_\_\_  
CALIFORNIA STATE FIRE MARSHAL  
APPROVED  
APPROVAL OF THIS PLAN DOES NOT AUTHORIZE OR APPROVE ANY  
CONSTRUCTION OR DEVIATION FROM APPLICABLE REGULATIONS. FINAL  
APPROVAL IS SUBJECT TO REGISTRATION. ONE SET OF APPROVED  
PLANS SHALL BE AVAILABLE ON THE PROJECT SITE AT ALL TIMES.  
REVIEWED BY: \_\_\_\_\_ DATE: \_\_\_\_\_

**CAÑADA COLLEGE**  
Electrical  
Infrastructure  
Replacement  
Project  
4200 Farm Hill Blvd  
Redwood City, CA 94061

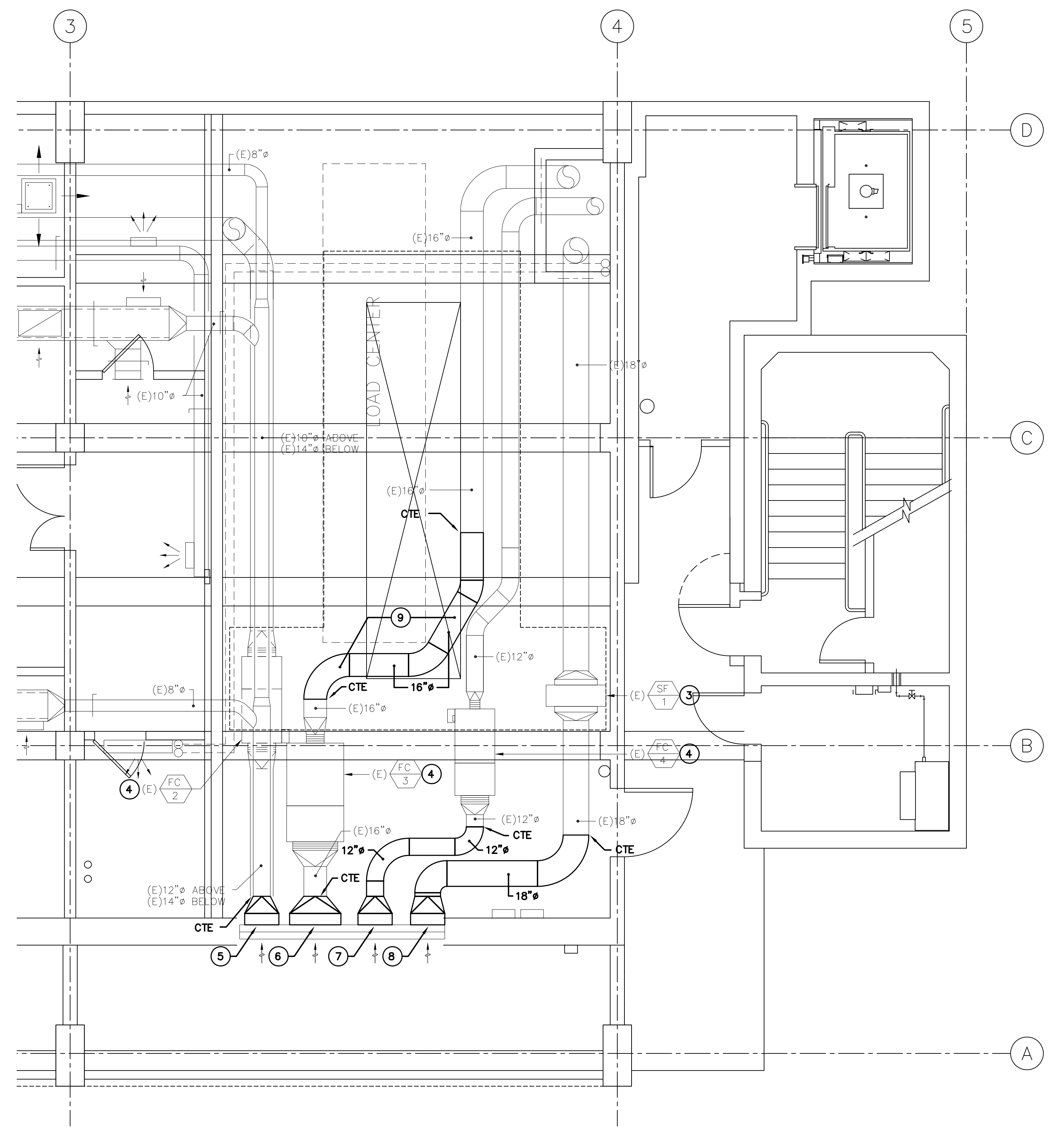
RECORD SET

SHEET TITLE  
**MECHANICAL PARTIAL FLOOR PLANS - BLDG 16**

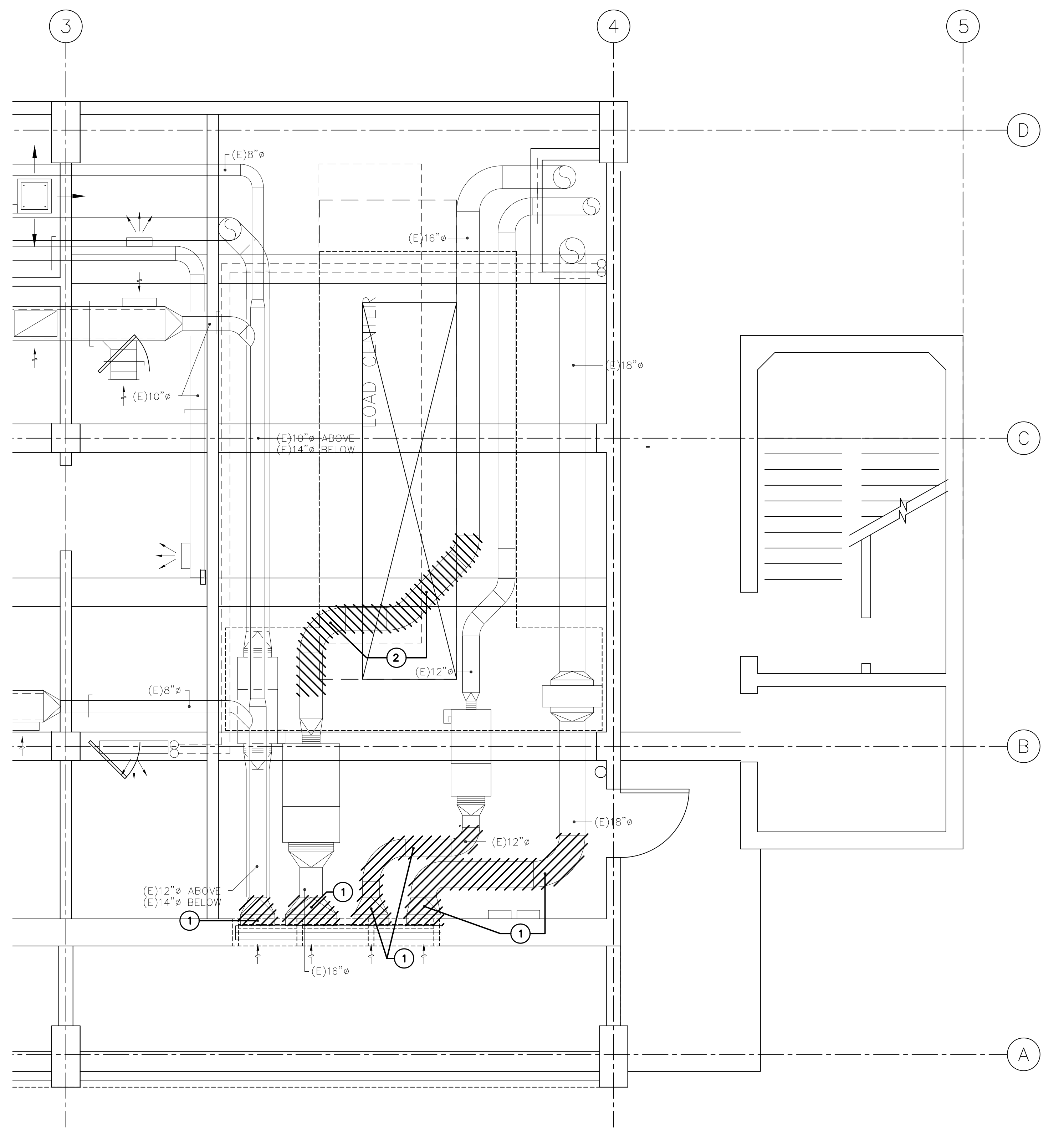
REVISIONS		
NO.	DATE	DESCRIPTION

DATE: June 15, 2012  
DRAWN: VT/AL  
CHECKED: MW  
SCALE: AS NOTED  
JOB NO.: 2921.01

SHEET NUMBER  
**M1.1**



MECHANICAL PARTIAL FLOOR PLAN - BLDG 16 LOAD CENTER #2  
SCALE: 1/4" = 1'-0"  
2  
M1.1  
NORTH



MECHANICAL PARTIAL DEMOLITION PLAN - BLDG 16 LOAD CENTER #2  
SCALE: 1/4" = 1'-0"  
1  
M1.1  
NORTH