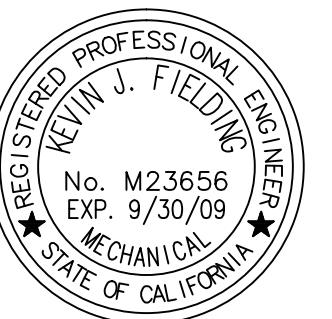


NO.	ISSUES/REVISIONS	DATE
	100% SCHEMATIC DESIGN	04/28/08
	50% DESIGN DEVELOPMENT	06/13/08
	100% DESIGN DEVELOPMENT	07/28/08
	INCREMENT 2 80% REVIEW	09/10/08
	DSA INCREMENT 2	
	STRUCTURE & GFRC PANELS	11/11/08
7	DSA INCREMENT #3 50% REVIEW	11/11/08
9	DSA INCREMENT #3 80% REVIEW	12/15/08
10	DSA INCREMENT #3	
	TENANT IMPROVEMENT AND ROOFING SYSTEM	02/09/09
12	HPOC REVIEW	04/30/09
14	DSA INCREMENT #3 BACKCHECK	05/13/09
	ISSUED FOR CONSTRUCTION	10/27/09

DIVISION OF THE STATE ARCHITECT
APPL # 01-110117
FILE # 41-C1
AC _____ FLS _____
SSS _____ DATE _____
IDENTIFICATION STAMP



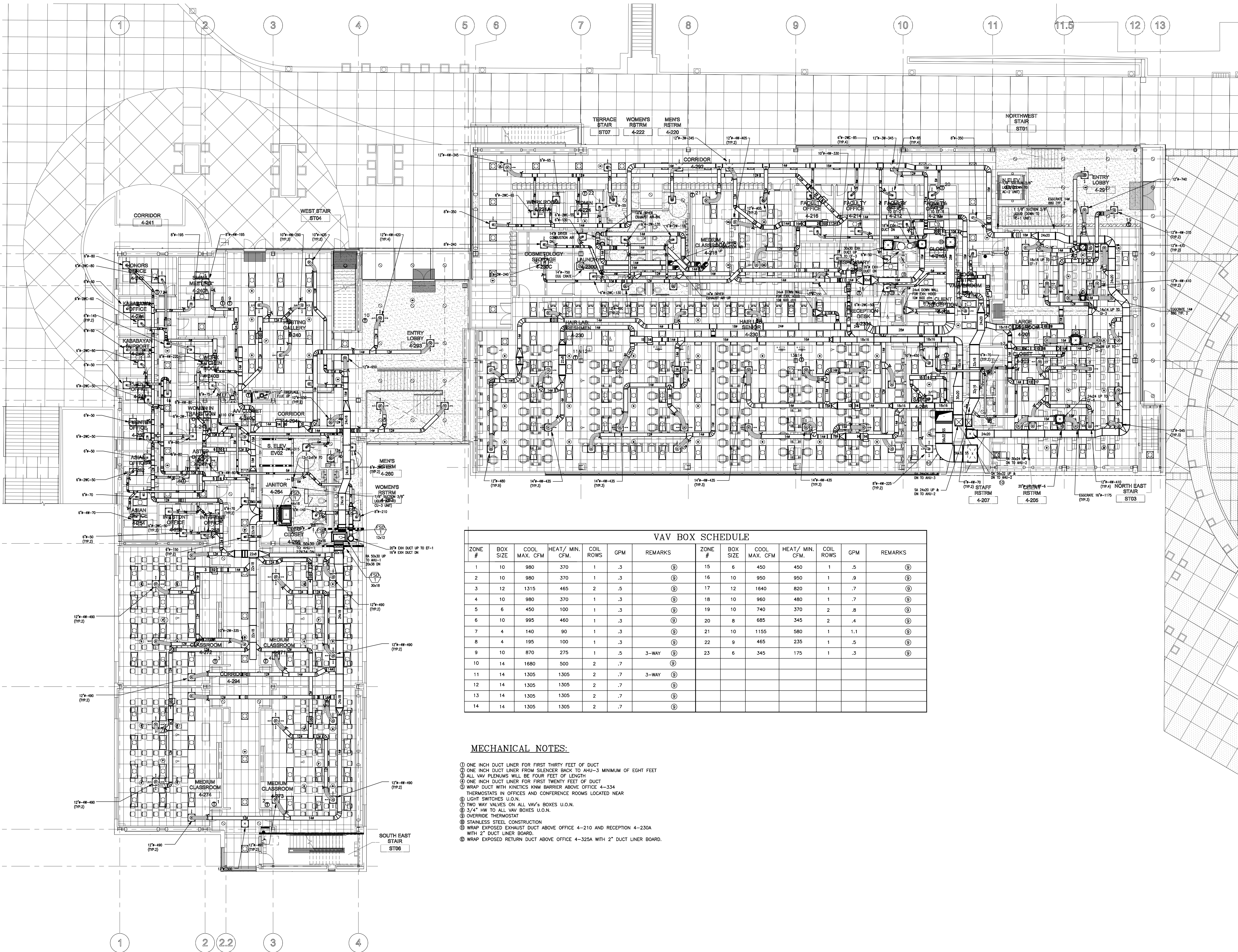
SKYLINE COLLEGE
SAN MATEO COUNTY
COMMUNITY COLLEGE
DISTRICT
CIP2 DESIGN-BUILD
PROJECT
BUILDING 4
INCREMENT 3

ISSUED FOR CONSTRUCTION

CMT PROJECT NO. 28212 DRAWN BY:
DATE: 10-27-09 CHECKED BY:
SCALE: 0' 4' 8' 12' 16' 24' 32'
SHEET TITLE:

LEVEL 2
MECHANICAL
OVERALL
FLOOR
PLAN

SHEET NO. M-102



VAV BOX SCHEDULE

ZONE #	BOX SIZE	COOL MAX. CFM	HEAT/ MIN. CFM	COIL ROWS	GPM	REMARKS	ZONE #	BOX SIZE	COOL MAX. CFM	HEAT/ MIN. CFM	COIL ROWS	GPM	REMARKS
1	10	980	370	1	.3	⊙	15	6	450	450	1	.5	⊙
2	10	980	370	1	.3	⊙	16	10	950	950	1	.9	⊙
3	12	1315	465	2	.5	⊙	17	12	1640	820	1	.7	⊙
4	10	980	370	1	.3	⊙	18	10	960	480	1	.7	⊙
5	6	450	100	1	.3	⊙	19	10	740	370	2	.8	⊙
6	10	995	460	1	.3	⊙	20	8	685	345	2	.4	⊙
7	4	140	90	1	.3	⊙	21	10	1155	580	1	1.1	⊙
8	4	195	100	1	.3	⊙	22	9	465	235	1	.5	⊙
9	10	870	275	1	.5	3-WAY ⊙	23	6	345	175	1	.3	⊙
10	14	1680	500	2	.7	⊙							
11	14	1305	1305	2	.7	3-WAY ⊙							
12	14	1305	1305	2	.7	⊙							
13	14	1305	1305	2	.7	⊙							
14	14	1305	1305	2	.7	⊙							

- MECHANICAL NOTES:
- ⊙ ONE INCH DUCT LINER FOR FIRST THIRTY FEET OF DUCT
 - ⊙ ONE INCH DUCT LINER FROM SILENCER BACK TO AHU-3 MINIMUM OF EIGHT FEET
 - ⊙ ALL VAV PLENUMS WILL BE FOUR FEET OF LENGTH
 - ⊙ ONE INCH DUCT LINER FOR FIRST TWENTY FEET OF DUCT
 - ⊙ WRAP DUCT WITH KINETICS KIN BARRIER ABOVE OFFICE 4-334
 - ⊙ THERMOSTATS IN OFFICES AND CONFERENCE ROOMS LOCATED NEAR
 - ⊙ LIGHT SWITCHES U.O.N.
 - ⊙ TWO WAY VALVES ON ALL VAV'S BOXES U.O.N.
 - ⊙ 3/4" HW TO ALL VAV BOXES U.O.N.
 - ⊙ OVERRIDE THERMOSTAT
 - ⊙ STAINLESS STEEL CONSTRUCTION
 - ⊙ WRAP EXPOSED EXHAUST DUCT ABOVE OFFICE 4-210 AND RECEPTION 4-230A WITH 2" DUCT LINER BOARD.
 - ⊙ WRAP EXPOSED RETURN DUCT ABOVE OFFICE 4-325A WITH 2" DUCT LINER BOARD.