

SHEET NOTES

1. REMOVE EXISTING PLENUMS CONNECTING TO EXISTING LOUVER AND RELATED DUCT AS SHOWN TO ALLOW FOR THE REMOVAL OF THE EXISTING LOUVER AND THE INSTALLATION OF A NEW ELECTRICAL LOAD CENTER. NEW PLENUMS AND RELATED DUCT ARE TO BE INSTALLED TO MATCH THE EXISTING INSTALLATION.
2. REMOVE EXISTING 16"Ø DUCT.
3. EXISTING SUPPLY FAN TO REMAIN.
4. EXISTING FAN COIL UNIT TO REMAIN.
5. TWO (2) 24"x24"x8" DEEP PLENUMS, ONE (1) ABOVE AND ONE (1) BELOW, ARE TO CONNECT TO THE LOUVER AS HIGH AS POSSIBLE. THE UPPER 24"x24"x8" PLENUM IS TO HAVE A SMOOTH SQUARE TO ROUND TRANSITION FROM 24"x24" TO 12"Ø AND CONNECT TO THE EXISTING 12"Ø DUCT. THE LOWER 24"x24"x8" PLENUM IS TO HAVE A SMOOTH SQUARE TO ROUND TRANSITION FROM 24"x24" TO 14"Ø AND IS TO CONNECT TO THE EXISTING 14"Ø DUCT.
6. 36"x36"x8" DEEP PLENUM IS TO CONNECT TO THE LOUVER AS HIGH AS POSSIBLE. PROVIDE A SMOOTH SQUARE TO ROUND TRANSITION FROM 36"x36" TO 16"Ø AND CONNECT TO THE EXISTING 16"Ø DUCT.
7. 24"x24"x8" DEEP PLENUM IS TO CONNECT TO THE LOUVER AS HIGH AS POSSIBLE. PROVIDE A SMOOTH SQUARE TO ROUND TRANSITION FROM 24"x24" TO 12"Ø AND CONNECT TO THE EXISTING 12"Ø DUCT.
8. 30"x24"x8" DEEP PLENUM IS TO CONNECT TO THE LOUVER AS HIGH AS POSSIBLE. PROVIDE A SMOOTH SQUARE TO ROUND TRANSITION FROM 30"x24" TO 18"Ø AND CONNECT TO THE EXISTING 18"Ø DUCT.
9. INSTALL NEW 16"Ø DUCT TO AVOID ROUTING ANY DUCT OVER ELECTRICAL LOAD CENTER.

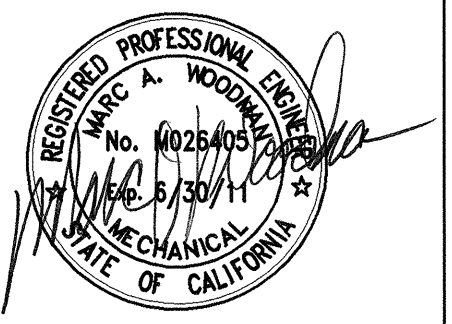
noll & tam
architects and planners

729 Heinz Avenue
Berkeley, CA 94710
510.649.8295
fax 510.649.3008



**MCCRACKEN
&
WOODMAN**
Incorporated

355 Grand Ave, Oakland, CA 94610
www.mccracken-woodman.com
TEL 510-763-4891
FAX 510-763-0619



IDENTIFICATION STAMP
DIVISION OF THE STATE ARCHITECT

APPLICATION NUMBER 01-11618
AC 125, PLS 12, JWB/BJB
DATE 2/9/11

CALIFORNIA STATE FIRE MARSHAL
APPROVED

APPROVAL OF THIS PLAN DOES NOT AUTHORIZE OR APPROVE ANY
DESIGN OR DEVIATION FROM APPLICABLE REGULATIONS. FINAL
APPROVAL IS SUBJECT TO INSPECTION. ONE SET OF APPROVED
PLANS SHALL BE AVAILABLE ON THE PROJECT SITE AT ALL TIMES.
REVIEWED BY: DATE:

**CAÑADA
COLLEGE**

Electrical
Infrastructure
Replacement
Project

4200 Farm Hill Blvd
Redwood City, CA 94061

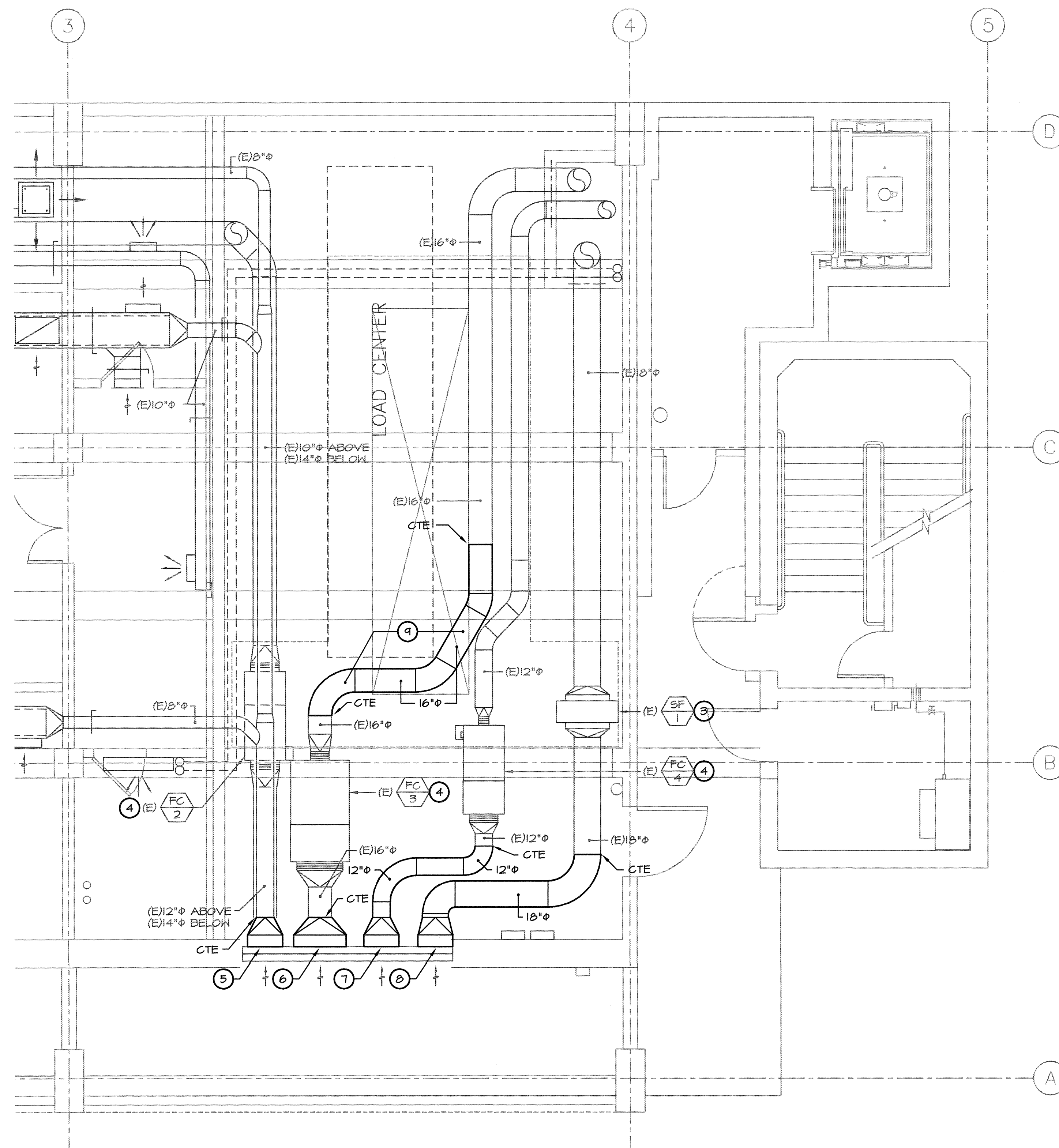
BID SET

SHEET TITLE
**MECHANICAL
PARTIAL FLOOR
PLANS - BLDG 16**

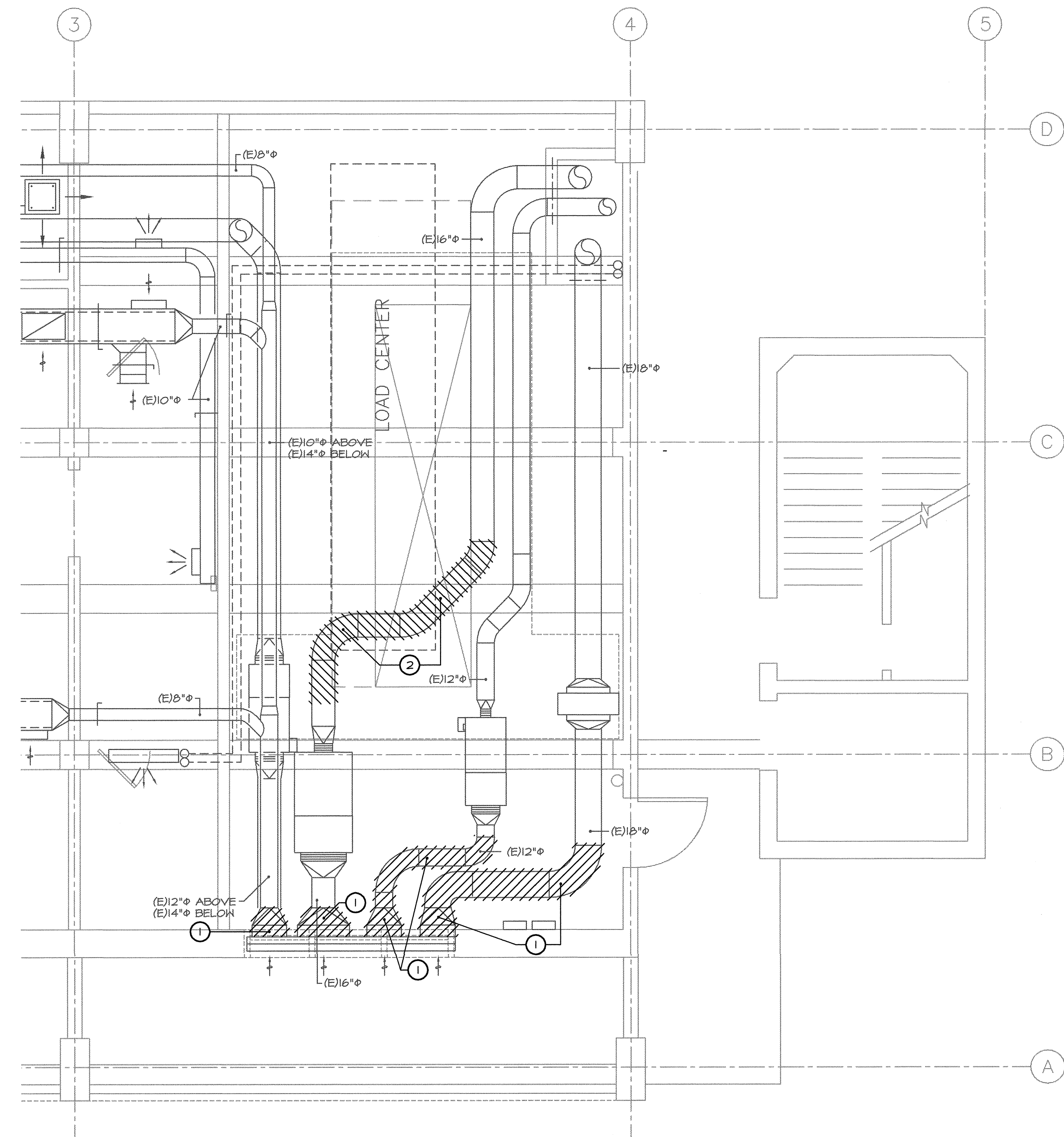
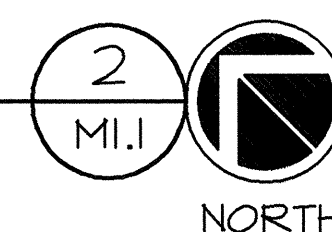
REVISIONS		
NO.	DATE	DESCRIPTION

DATE January 14, 2011
DRAWN VT
CHECKED MW
SCALE AS NOTED
JOB NO. 2921.01

SHEET NUMBER
M1.1



MECHANICAL PARTIAL FLOOR PLAN - BLDG 16 LOAD CENTER #2
SCALE: 1/4" = 1'-0"



MECHANICAL PARTIAL DEMOLITION PLAN - BLDG 16 LOAD CENTER #2
SCALE: 1/4" = 1'-0"

