

| REVISION | DESCRIPTION | INITIAL | DATE |
|----------|--------------------------|---------|---------|
| 1 | ADDENDUM RECORD DRAWINGS | | 9/15/03 |
| 2 | | | 4/19/05 |

| | |
|----------------------------|---------|
| ISSUED FOR PROGRESS REVIEW | 3/4/02 |
| ISSUED FOR PLAN CHECK | 4/15/02 |
| ISSUED FOR PERMIT | 7/22/02 |
| ISSUED FOR BID | |
| ISSUED FOR CONSTRUCTION | |

Rhine & Peterson
STRUCTURAL ENGINEERS
 1511 San Antonio Road, Suite 200
 Palo Alto, CA 94304
 Tel: 650.952.2200
 Fax: 650.952.2441
 http://www.rhp.com

INTERACTIVE
 R E S O U R C E S
 ARCHITECTURE-PLANNING-ENGINEERING
 117 PARK PLACE
 POINT RICHMOND
 CALIFORNIA 94801
 (910) 238-7435
 (FAX) 232-5325
 http://www.inter.com

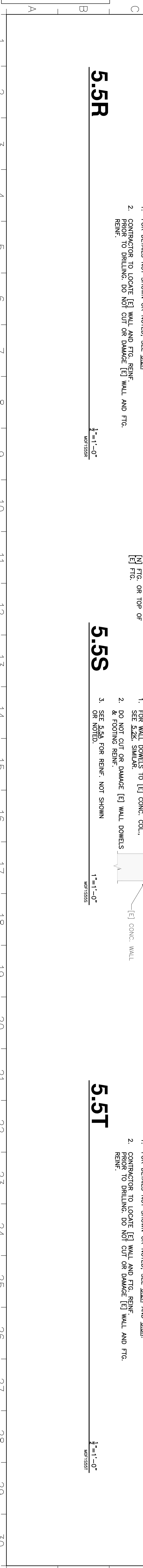
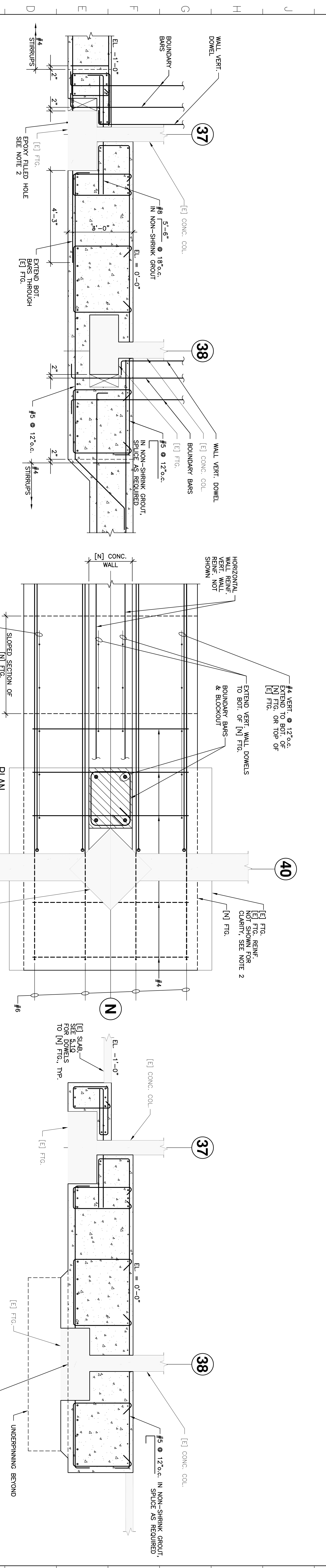
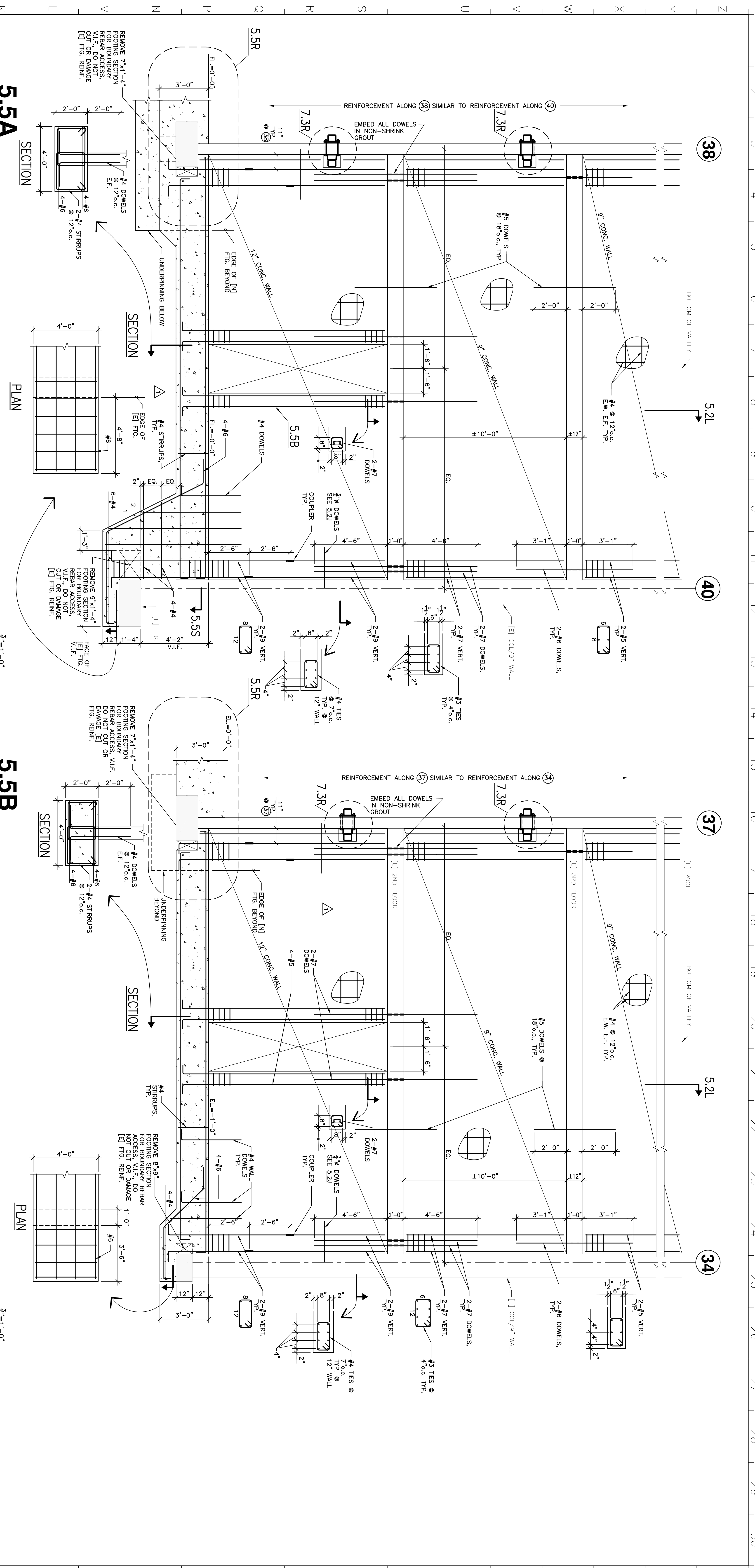
PROJECT:
BUILDING 18
SEISMIC
REHABILITATION
 COLLEGE OF SAN MATEO
 3401 CSM DRIVE
 SAN MATEO, CA 94402
 SAN MATEO CO. COMMUNITY
 COLLEGE DISTRICT

IDENTIFICATION STAMP
 DIVISION OF THE STATE ARCHITECT
 APR-01-104536
 A0 - RS - SS

CONCRETE
DETAILS

55.5

PROJ. NO. ASB003.41
 DRAWN BY
 DESIGNED BY
 CHECKED BY
 PEER REVIEW
 SHEET NUMBER
 NUMBER OF



R & P JOB No. MO037.001
 PRINCIPAL-IN-CHARGE PM
 DRAWER No.
 REMARKS: