

REVISION	DESCRIPTION	INITIAL	DATE
△	ADDENDUM RECORD DRAWINGS		9/15/03
			4/19/05
	ISSUED FOR PROGRESS REVIEW		3/4/02
	ISSUED FOR PLAN CHECK		4/15/02
	ISSUED FOR PERMIT		7/22/02
	ISSUED FOR BID		
	ISSUED FOR CONSTRUCTION		

**Rhine & Peterson**  
**STRUCTURAL ENGINEERS**  
 1511 San Antonio Road, Suite 200  
 Palo Alto, CA 94301  
 650 325-8900  
 FAX 650 325-8911

**INTERACTIVE**  
 R E S O U R C E S  
 ARCHITECTURE-PLANNING-ENGINEERING  
 117 PARK PLACE  
 POINT RICHMOND  
 CALIFORNIA 94801  
 (910) 238-7435  
 (FAX) 232-5325  
 http://www.interac.com

PROJECT:  
**BUILDING 18**  
**SEISMIC**  
**REHABILITATION**

COLLEGE OF SAN MATEO  
 3401 CSM DRIVE  
 SAN MATEO, CA 94402

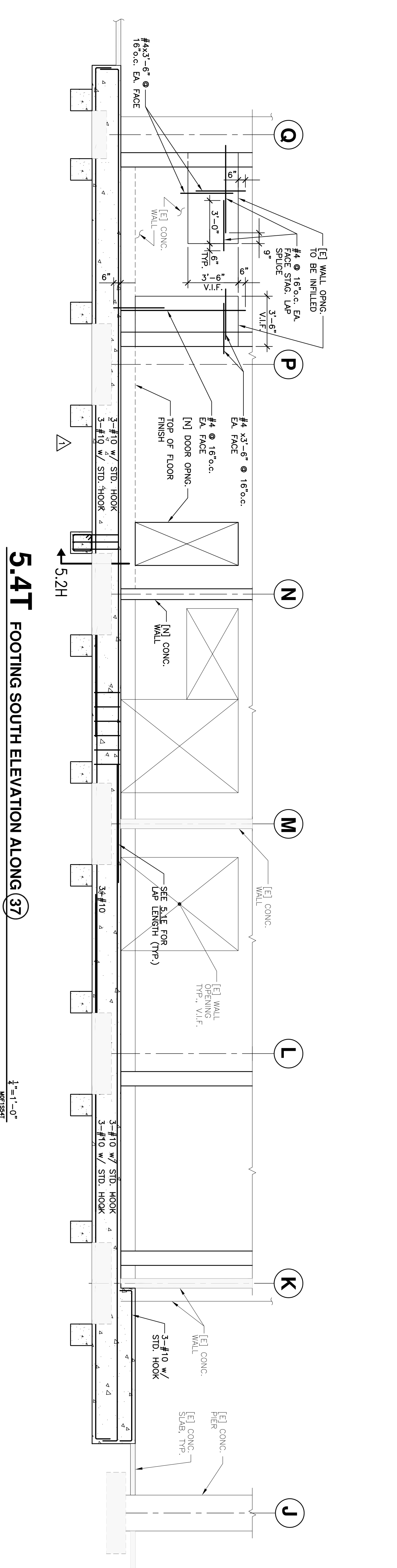
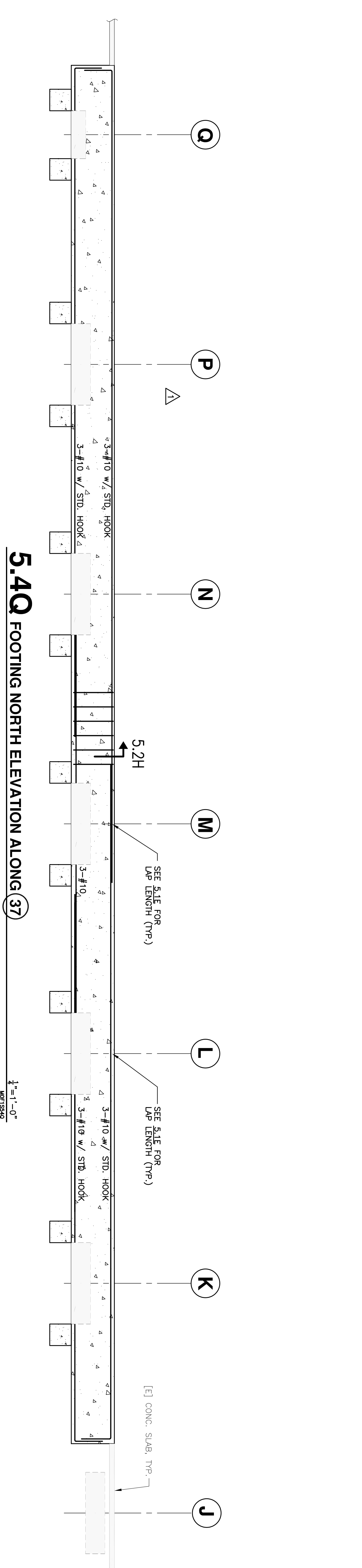
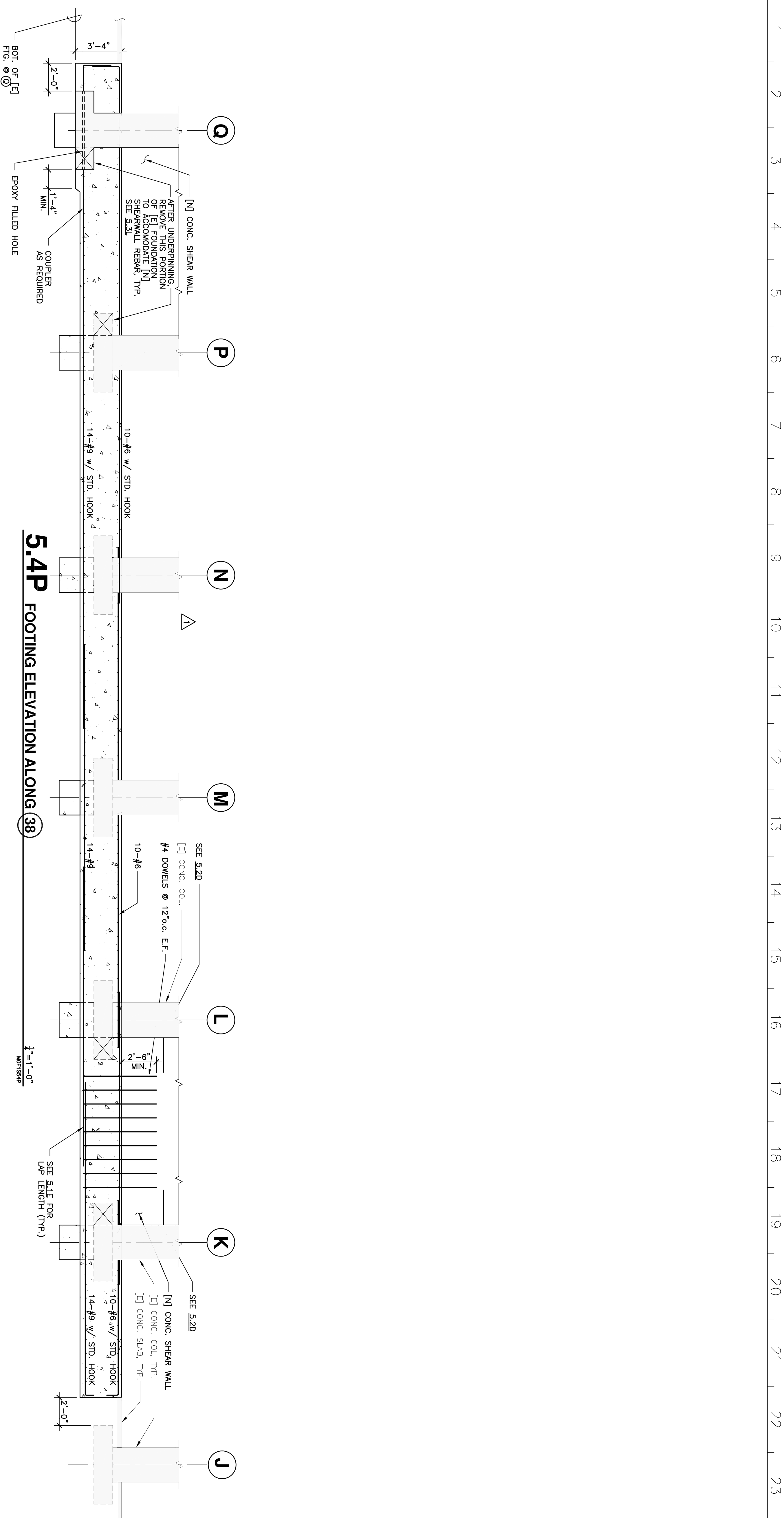
SAN MATEO CO. COMMUNITY  
 COLLEGE DISTRICT

IDENTIFICATION STAMP  
 DIVISION OF THE STATE ARCHITECT  
 APR. 01-10456  
 AS \_\_\_\_\_ RS \_\_\_\_\_ SS \_\_\_\_\_  
 DATE \_\_\_\_\_

SHEET TITLE:  
**CONCRETE**  
**DETAILS**

PROJECT NO. ASB003.41  
 DRAWN BY \_\_\_\_\_  
 DESIGNED BY \_\_\_\_\_  
 CHECKED BY \_\_\_\_\_  
 PEER REVIEWED BY \_\_\_\_\_  
 SHEET NUMBER:  
**S5.4**

NUMBER OF \_\_\_\_\_



R & P JOB No. MO037.001  
 PRINCIPAL-IN-CHARGE PM  
 DRAWER No.  
 REMARKS:

MO1554.dwg 6-11-02 8:33:33 am