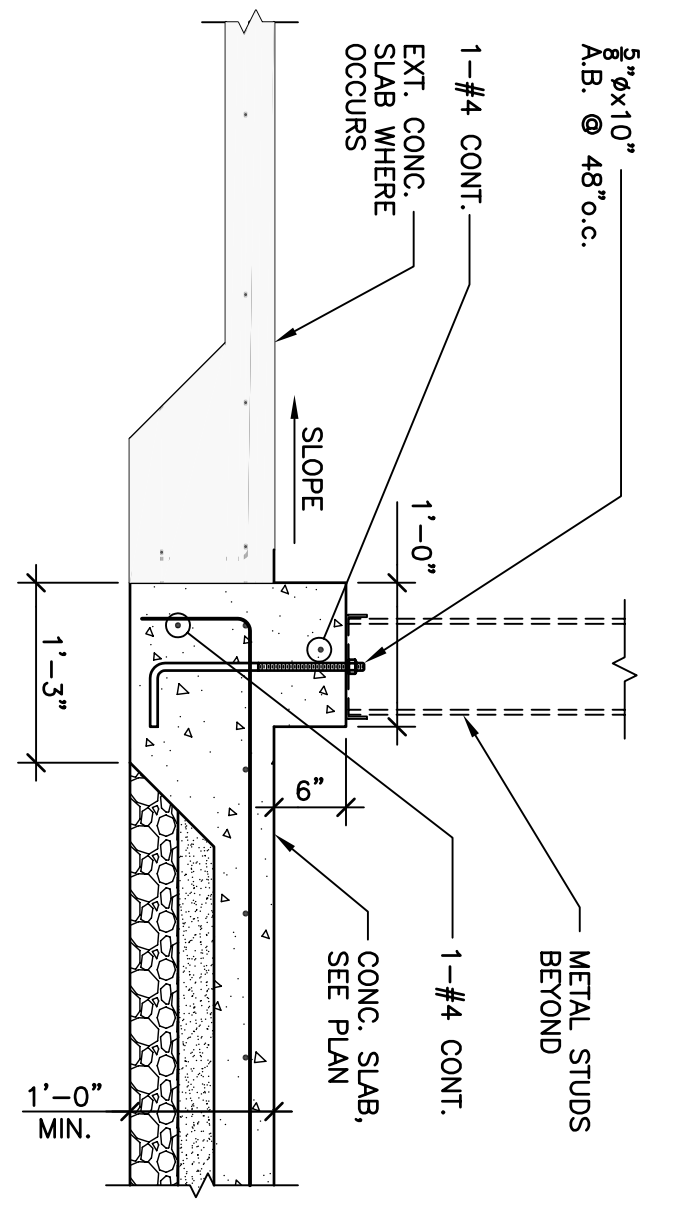
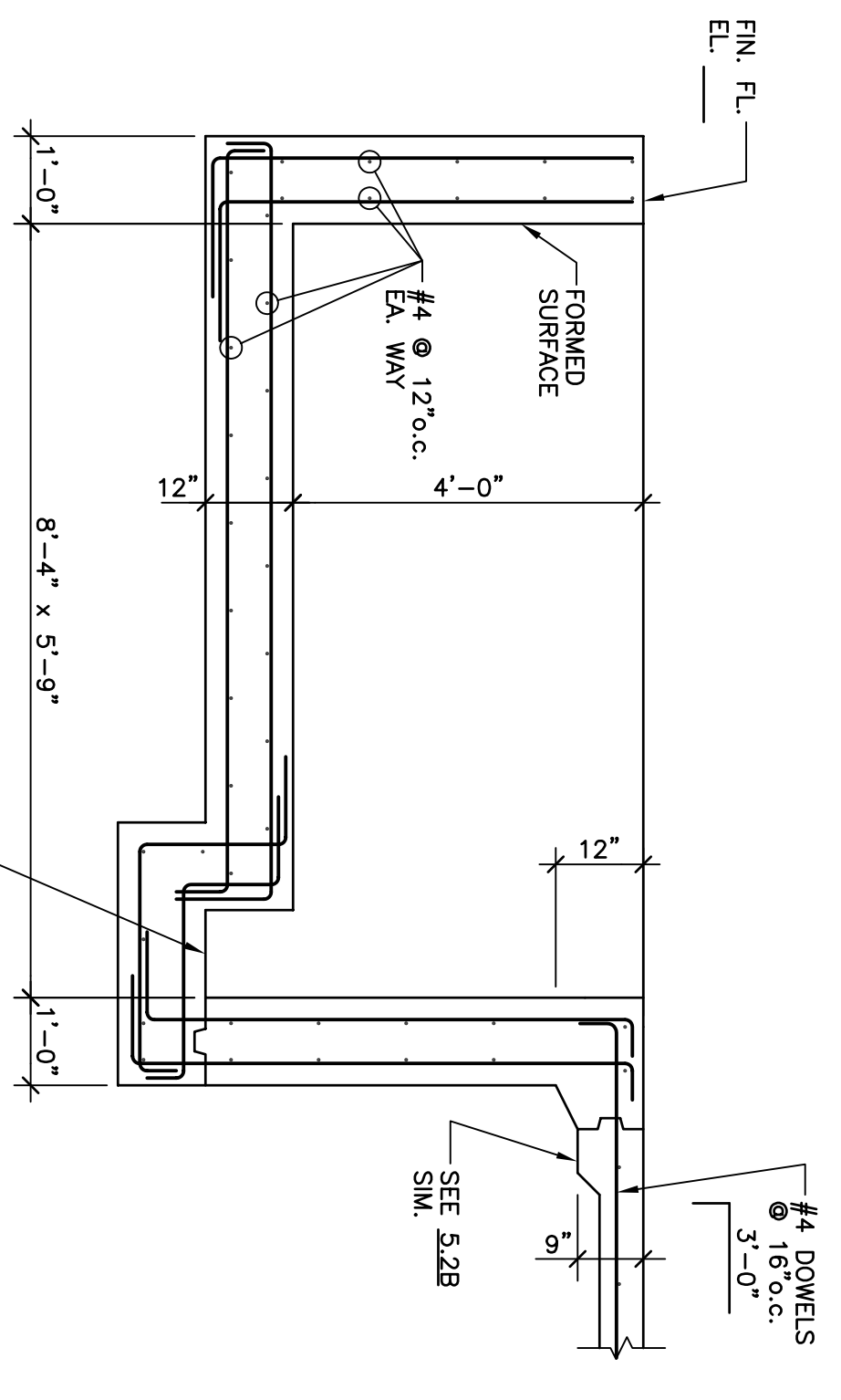


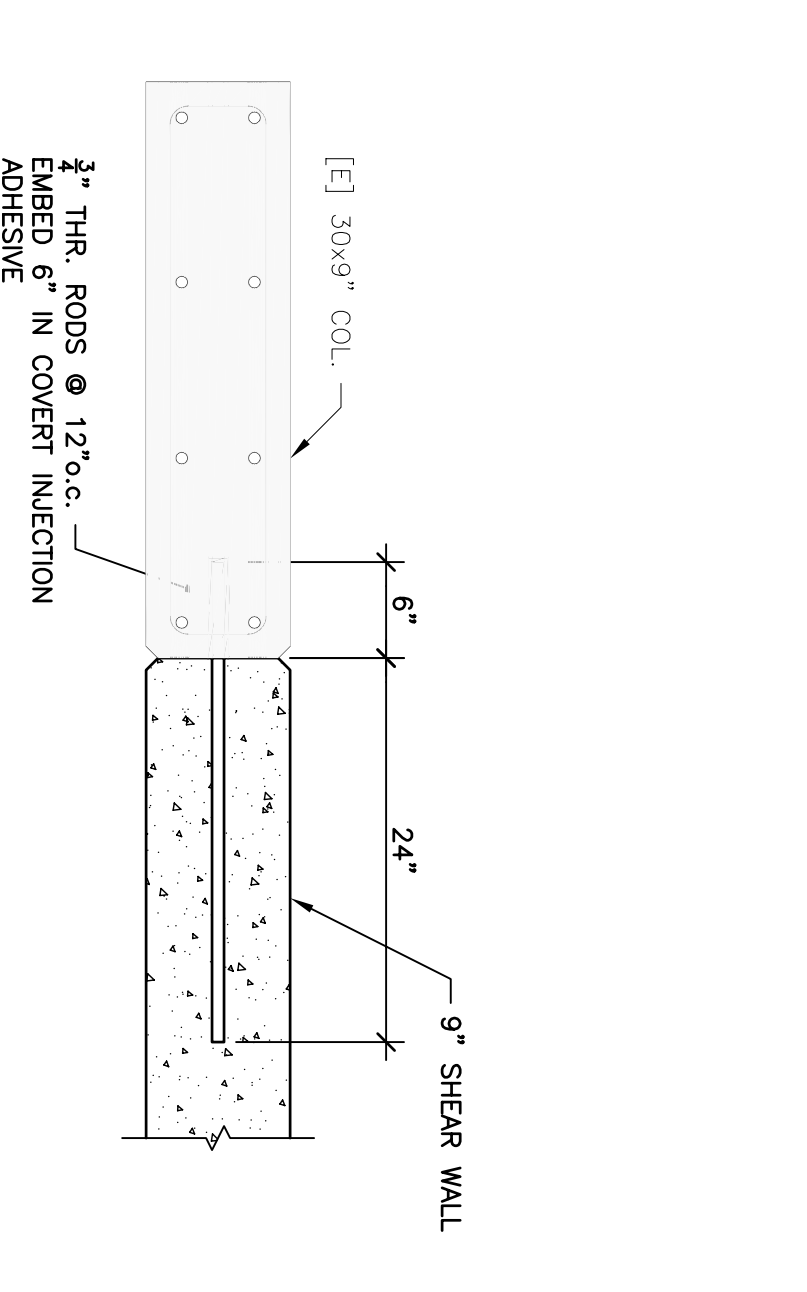
**5.2A**  
 3/4"=1'-0"  
 WPT/SSK



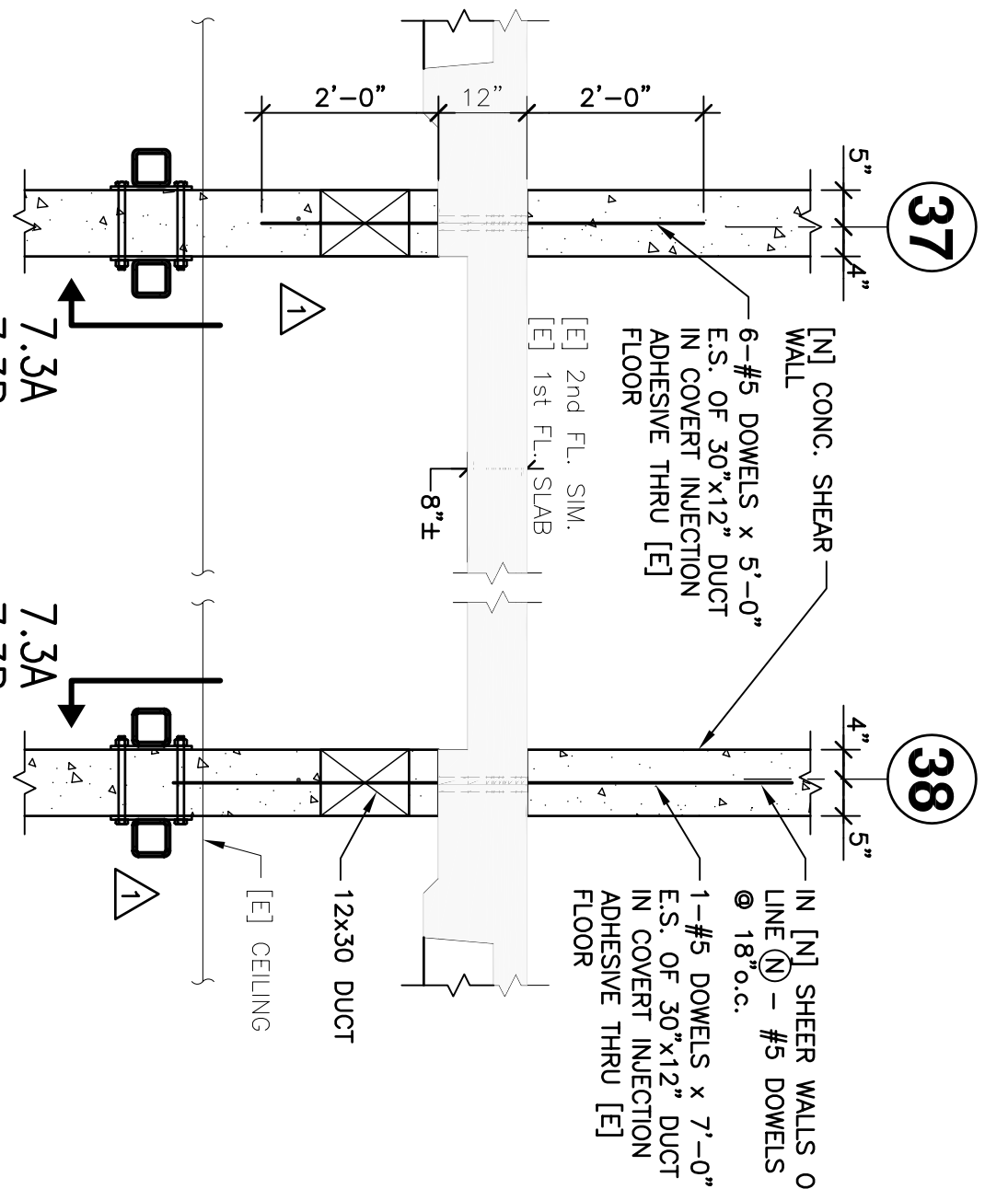
**5.2B** EXT. FOOTINGS @ DOOR LOCATIONS  
 3/4"=1'-0"  
 WPT/SSK



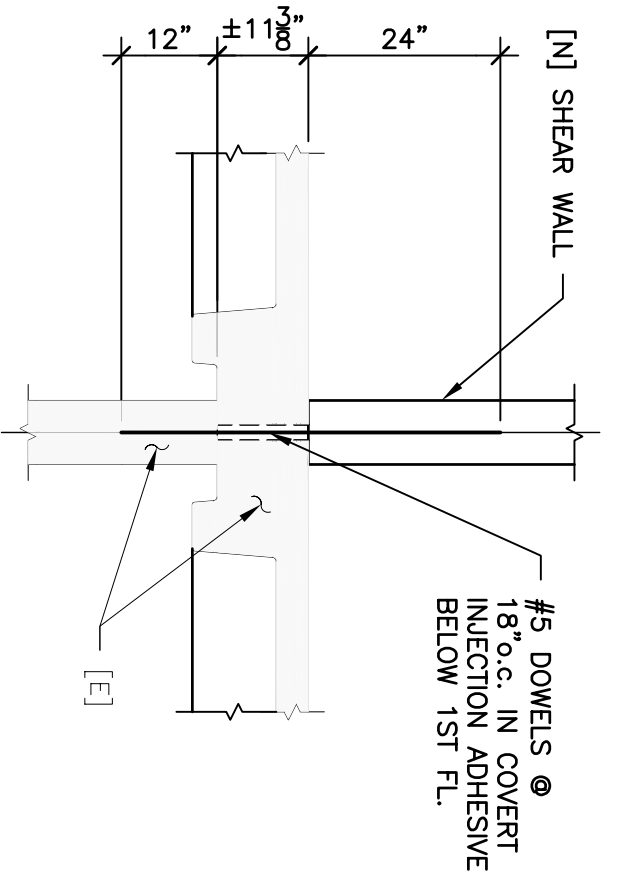
**5.2C** ELEVATOR PIT  
 3/4"=1'-0"  
 CSB/SSK-WPT



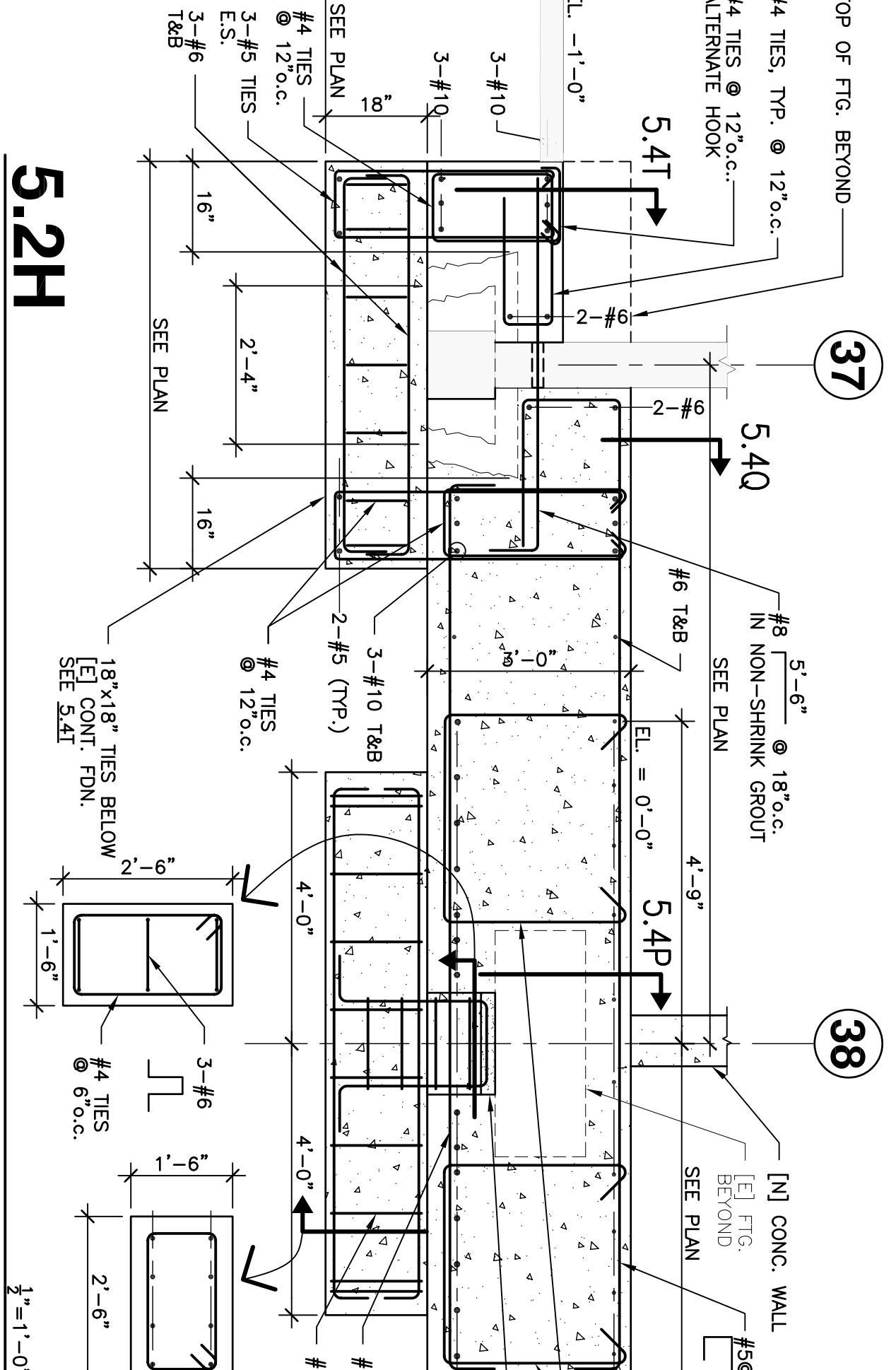
**5.2D** TYP.  
 1"=1'-0"  
 WPT/SSK



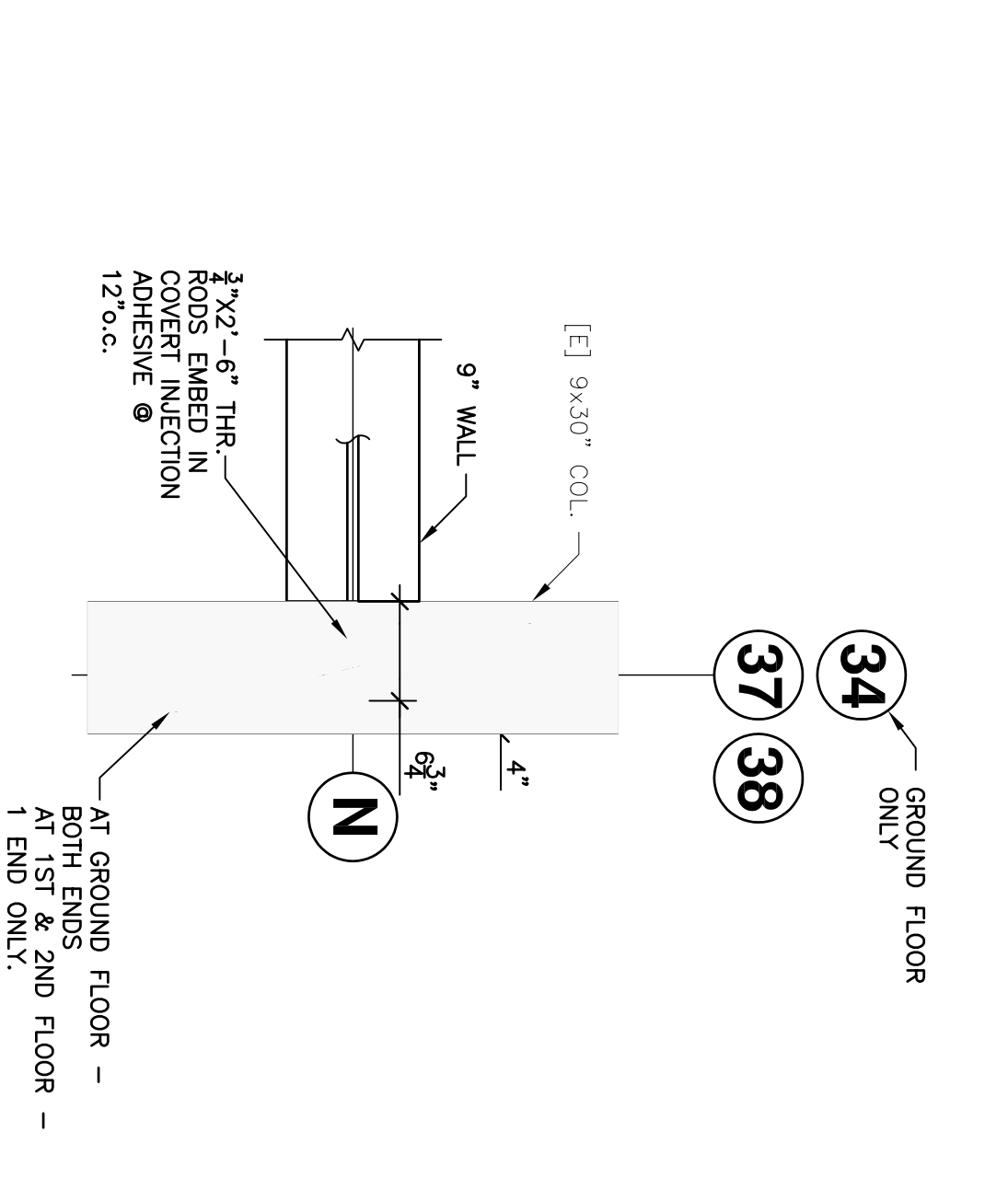
**5.2F** COLLECTOR AT 1ST AND 2ND FLOORS  
 1/2"=1'-0"  
 WPT/SSK



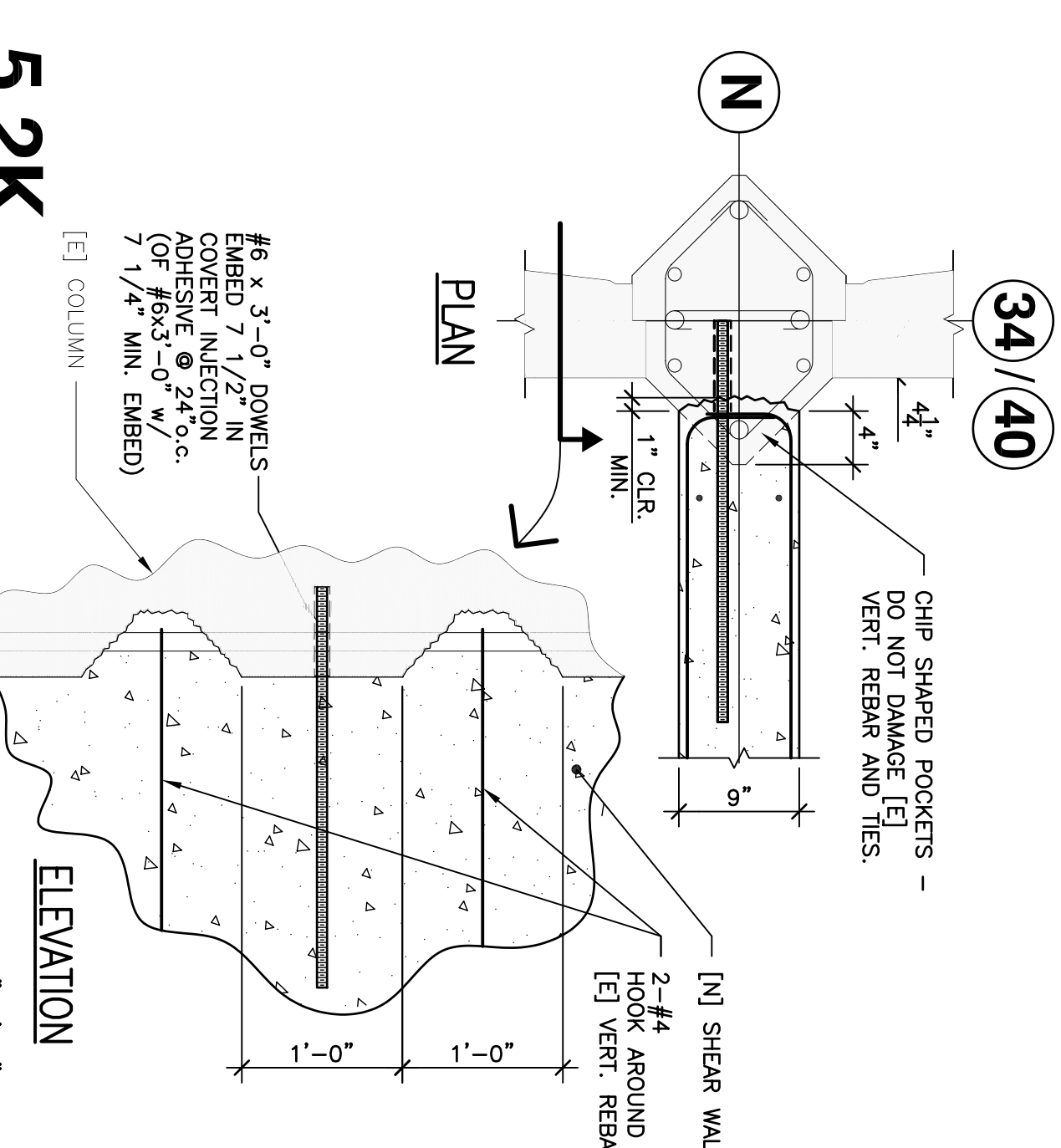
**5.2G** DETAIL  
 1/2"=1'-0"  
 WPT/SSK



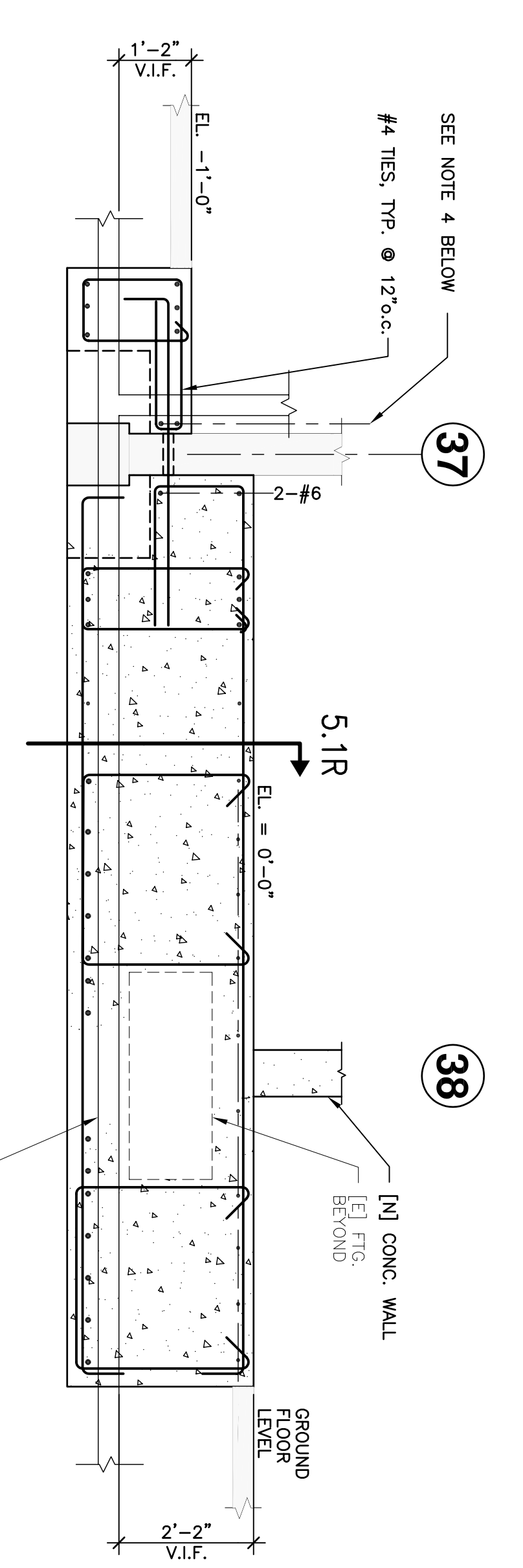
**5.2H**  
 1/2"=1'-0"  
 WPT/SSK



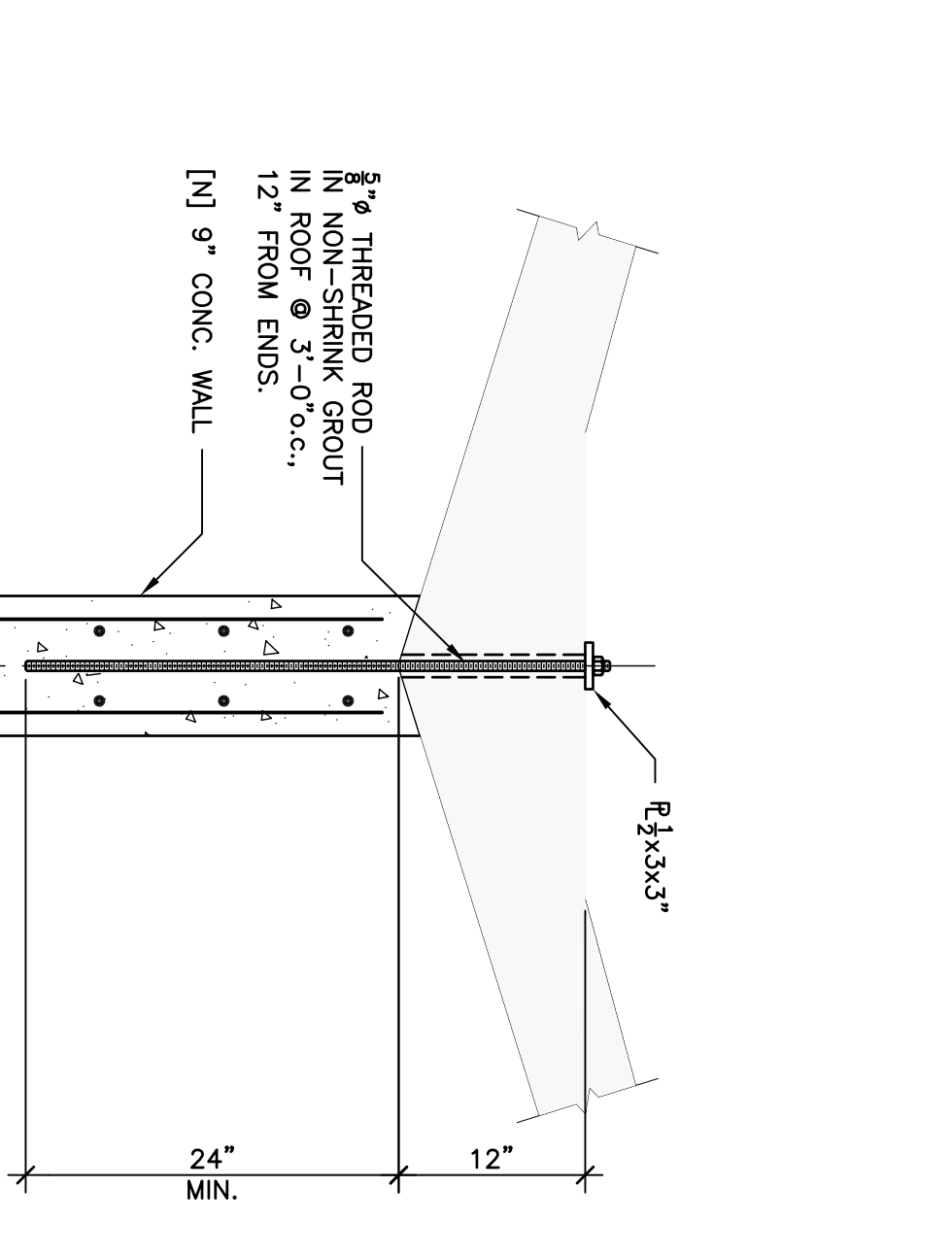
**5.2J**  
 1"=1'-0"  
 WPT/SSK



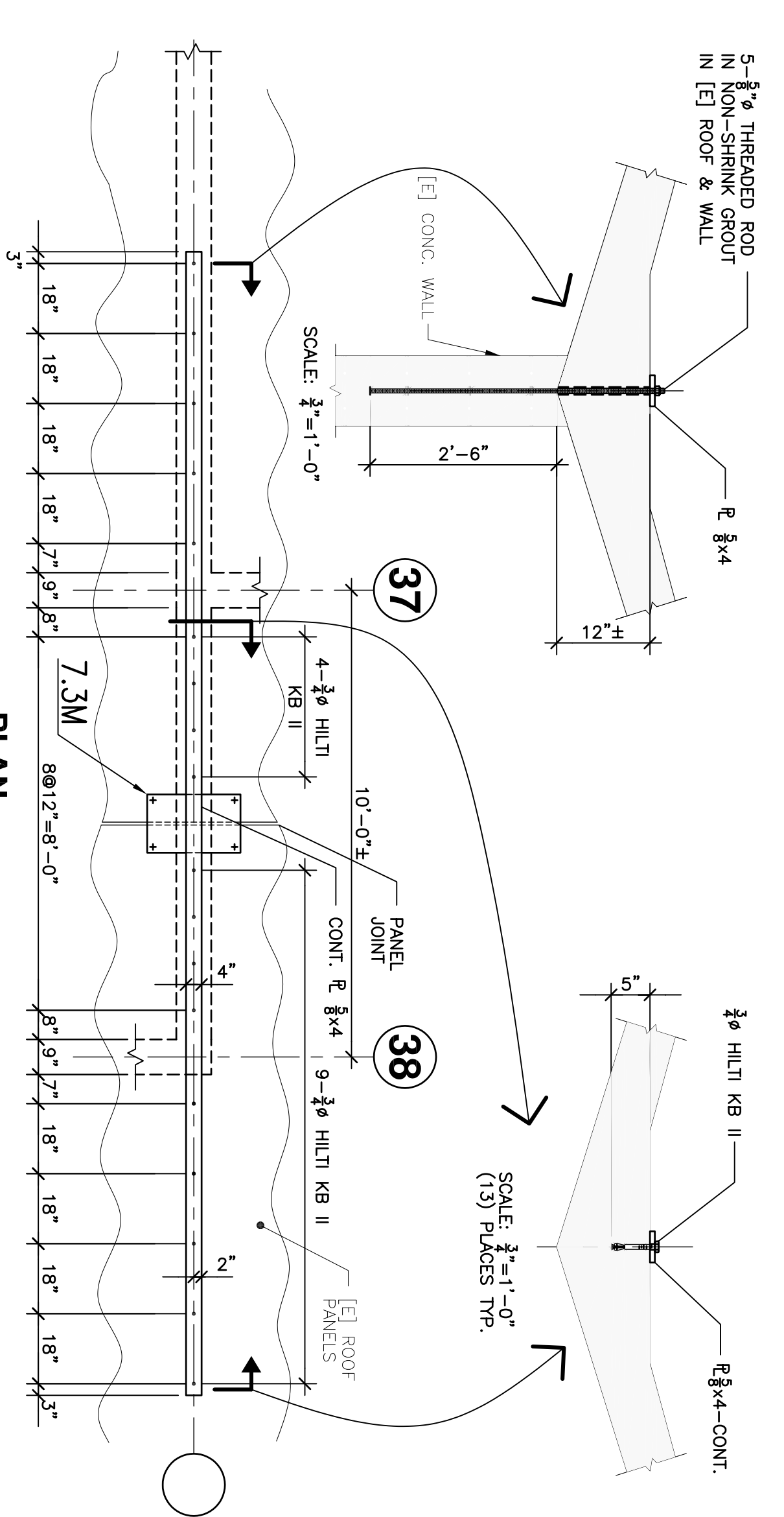
**5.2K**  
 1"=1'-0"  
 WPT/SSK



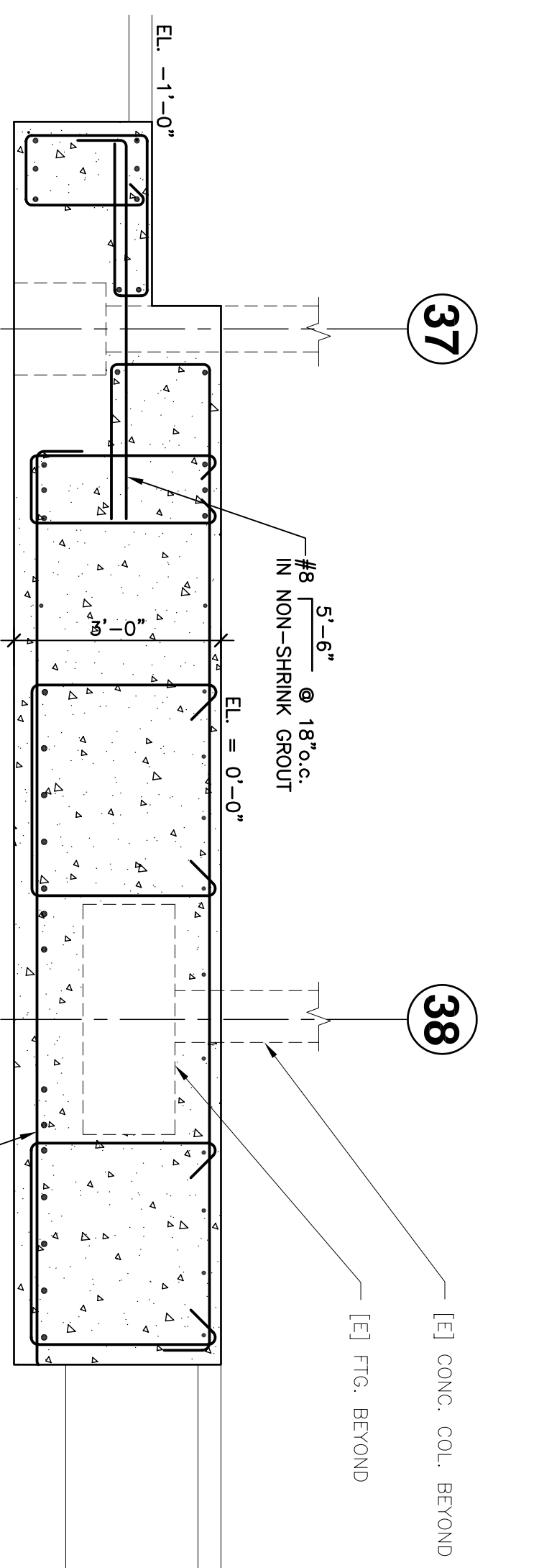
**5.2N**  
 3/4"=1'-0"  
 WPT/SSK



**5.2L** COLLECTORS AT ROOF LEVEL  
 1"=1'-0"  
 WPT/SSK



**5.2M**  
 1"=1'-0"  
 AS SHOWN WPT/SSK



**5.2P**  
 3/4"=1'-0"  
 WPT/SSK

- NOTES:
1. FOR DETAILS NOT SHOWN OR NOTED, SEE 5.2A
  2. CONTRACTOR TO LOCATE [E] WALL AND TIE REINF. PRIOR TO CONSTRUCTION. SEE 5.2B
  3. [E] PIPE TO CLEAR BOTTOM FOOTING REINFORCING. SEE 5.2B
  4. ADJUST CONT. REINFORCING TO CLEAR [E] PIPE. SEE 5.2E FOR L&E LENGTH REQUIREMENTS.

- NOTES:
1. FOR DETAILS NOT SHOWN OR NOTED, SEE 5.2H
  2. CONTRACTOR TO LOCATE [E] WALL AND TIE REINF. PRIOR TO PRELIM. DO NOT CUT OR DAMAGE [E] WALL AND TIE REINF.

R & P JOB No.	MO037.001
PRINCIPAL-IN-CHARGE	PM
DRAWER No.	
REMARKS:	

REVISION	DESCRIPTION	INITIAL	DATE
1	ISSUED FOR PROGRESS REVIEW		3/4/02
2	ISSUED FOR PLAN CHECK		4/19/02
3	ISSUED FOR PERMIT		7/22/02
4	ISSUED FOR BID		
5	ISSUED FOR CONSTRUCTION		

**Rime & Peterson**  
 STRUCTURAL ENGINEERS  
 1511 San Antonio Road, Suite 200  
 Palo Alto, CA 94303  
 Tel: 650.320.8800  
 Fax: 650.320.8801  
 www.rime.com

**INTERACTIVE**  
 R E S O U R C E S  
 ARCHITECTURE-PLANNING-ENGINEERING  
 117 PARK PLACE  
 POINT RICHMOND  
 CALIFORNIA 94801  
 (910) 238-7435  
 (FAX) 232-65225  
 http://www.rtrweb.com

PROJECT:  
**BUILDING 18**  
**SEISMIC**  
**REHABILITATION**  
 COLLEGE OF SAN MATEO  
 3401 CSM DRIVE  
 SAN MATEO, CA 94402  
 SAN MATEO CO. COMMUNITY  
 COLLEGE DISTRICT

DESIGNATION STAMP	DIVISION OF THE STATE ARCHITECT
APR. 01-10456	
NO. RS	SS
DATE	
SHEET TITLE:	CONCRETE DETAILS
PROJ. NO.	ASB003.41
DRAWN BY	
DESIGNED BY	
FEED REVIEW	
SHEET NUMBER:	<b>55.2</b>
NUMBER	OF