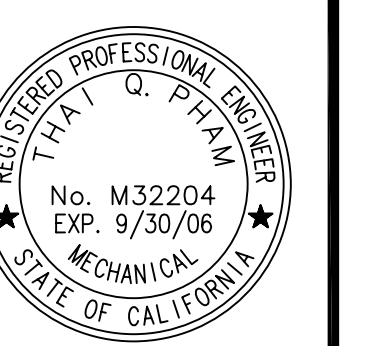


REV	DATE	DESCRIPTION
1	1/27/09	ISSUE
2	2/10/09	ISSUE
3	3/4/09	REVISION TO ISA COMMENTS
4	5/27/09	REVISION TO ISA COMMENTS
5	6/22/09	REVISION TO ISA COMMENTS
6	5/1/06	AS BUILTS

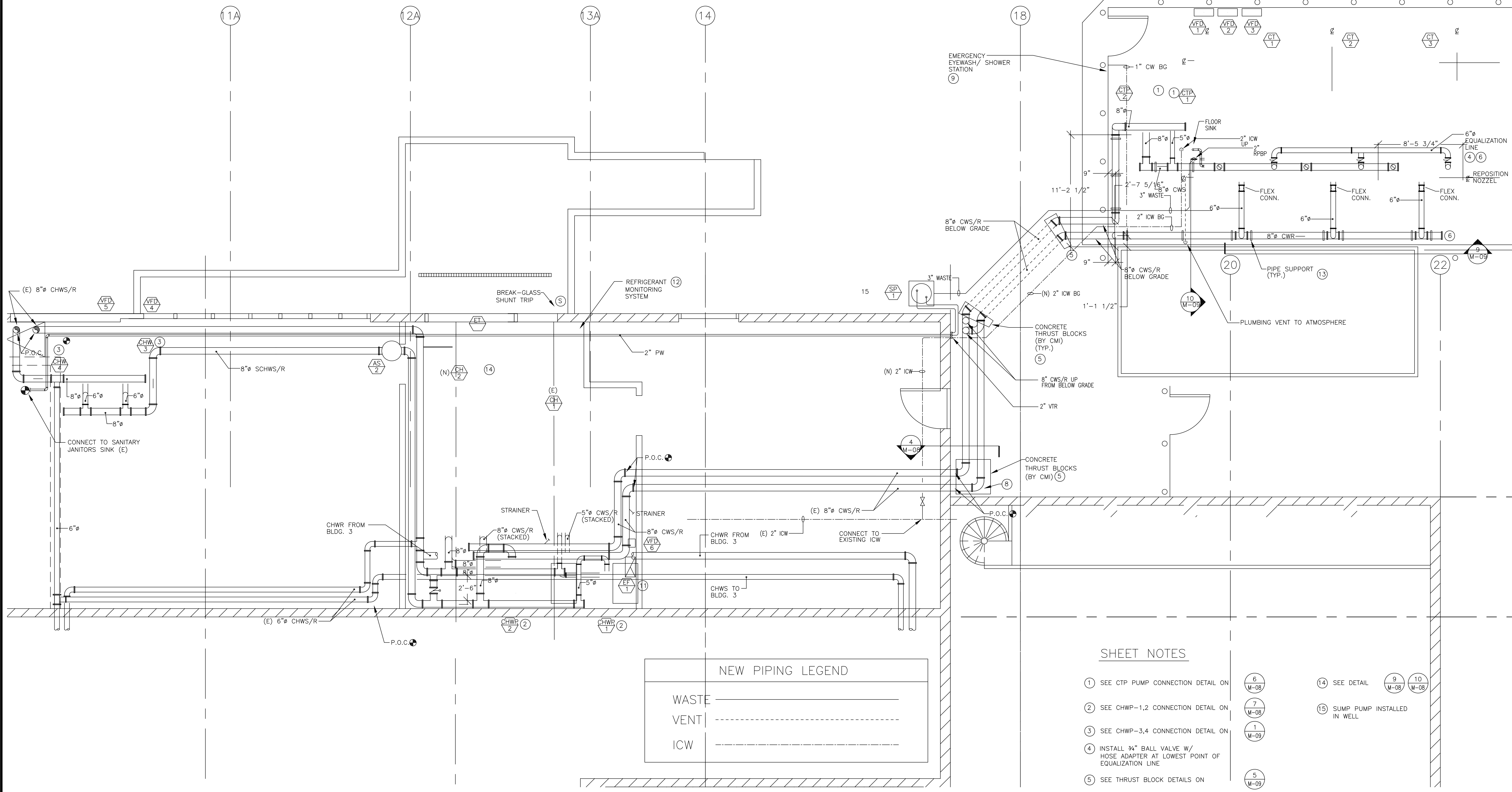
CMT
 CENTRAL PLANT RENOVATION
 CMT JOB # 22524-008
 These drawings and specifications have been prepared by CMT for the use of the contractor. CMT shall not be responsible for any errors or omissions in the drawings or specifications.

Canada College Modernization
 CENTRAL PLANT RENOVATION
 San Mateo County Community College District



CENTRAL PLANT CHILLER NEW CONSTRUCTION PLAN

DATE	1/27/09
PROJECT NO.	22524-008
DESIGNED BY	
DRAWN BY	
CHECKED BY	
DATE	
UPDRT NO.	
DRWS (COND)	
DRWS (COND)	
DRWS (COND)	
FILE NAME	



NEW PIPING LEGEND

WASTE	—————
VENT	- - - - -
ICW	—————

GENERAL NOTES

- CFC SEC. 6307.2 VALVES AND SWITCHES SHALL BE ADEQUATELY IDENTIFIED AS TO THE SEQUENTIAL PROCEDURE TO BE FOLLOWED IN THE EVENT OF AN EMERGENCY.
- CFC SEC. 6315.4 STOP VALVES SHALL BE IDENTIFIED BY TAGGING. A VALVE CHART SHALL BE MOUNTED UNDER GLASS AT AN APPROVED LOCATION NEAR THE PRINCIPAL ENTRANCE TO A REFRIGERATION MACHINERY ROOM.
- CFC SEC. 6315.5 PIPING SHALL BE IDENTIFIED WITH THE TYPE OF REFRIGERANT, FUNCTION AND PRESSURE.
- CFC SEC. 6320.1 **ACCEPTANCE TESTING**. THE FOLLOWING EMERGENCY DEVICES OR SYSTEMS SHALL BE TESTED TO DEMONSTRATE THEIR SAFETY AND EFFECTIVENESS UPON COMPLETION OR ALTERATION: 1) TREATMENT AND FLARING SYSTEMS, 2) VALVES AND APPURTENANCES NECESSARY TO THE OPERATION OF EMERGENCY REFRIGERATION CONTROL BOXES, 3) FANS AND ASSOCIATED EQUIPMENT INTENDED TO OPERATE EMERGENCY PURGE VENTILATION SYSTEMS, AND 4) DETECTION AND ALARM SYSTEMS.

SHEET NOTES

- SEE CTP PUMP CONNECTION DETAIL ON **6** (M-08)
- SEE CHWP-1,2 CONNECTION DETAIL ON **7** (M-08)
- SEE CHWP-3,4 CONNECTION DETAIL ON **1** (M-09)
- INSTALL 3/4" BALL VALVE W/ HOSE ADAPTER AT LOWEST POINT OF EQUALIZATION LINE
- SEE THRUST BLOCK DETAILS ON **5** (M-09)
- SEE EQUALIZATION LINE & BOTTOM OUTLET CONNECTION DETAIL ON **11** (M-09)
- NOT USED **4** (M-08)
- SEE PIPE PENETRATION FROM UNDERGROUND DETAIL ON **5** (M-08)
- SEE EMERGENCY EYE WASH/SHOWER DETAIL ON **8** (M-08)
- SEE FLOOR SINK DETAIL ON **11** (M-08)
- SEE REFRIGERANT EXHAUST DETAIL ON REFRIGERANT EXHAUST SYSTEM SHALL CONFORM TO CFC **2** (M-08) **3** (M-08)
- RUN REFRIGERANT SNIFFER BETWEEN CHILLERS REFRIGERANT SENSOR SHALL BE CALIBRATED FOR R-134A
- SEE PIPE SUPPORT LOCATIONS ON SHEET M-05, SEE SUPPORT DETAIL ON **12** (M-08)
- SEE DETAIL **9** (M-08) **10** (M-08)
- SUMP PUMP INSTALLED IN WELL **15**

