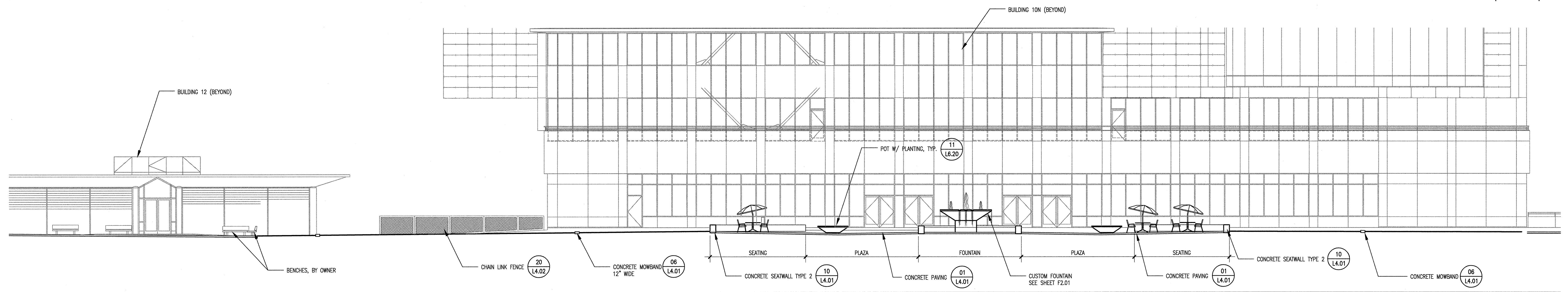
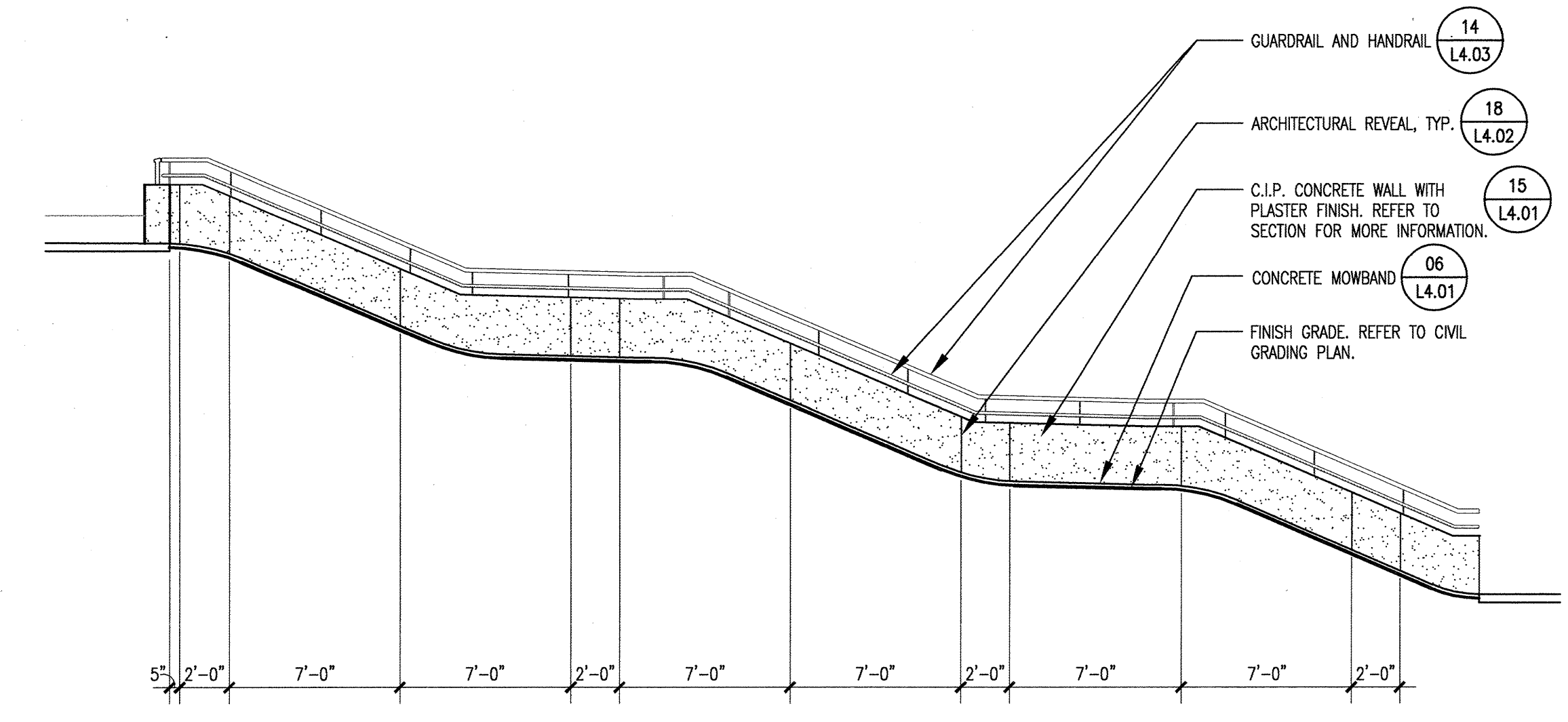


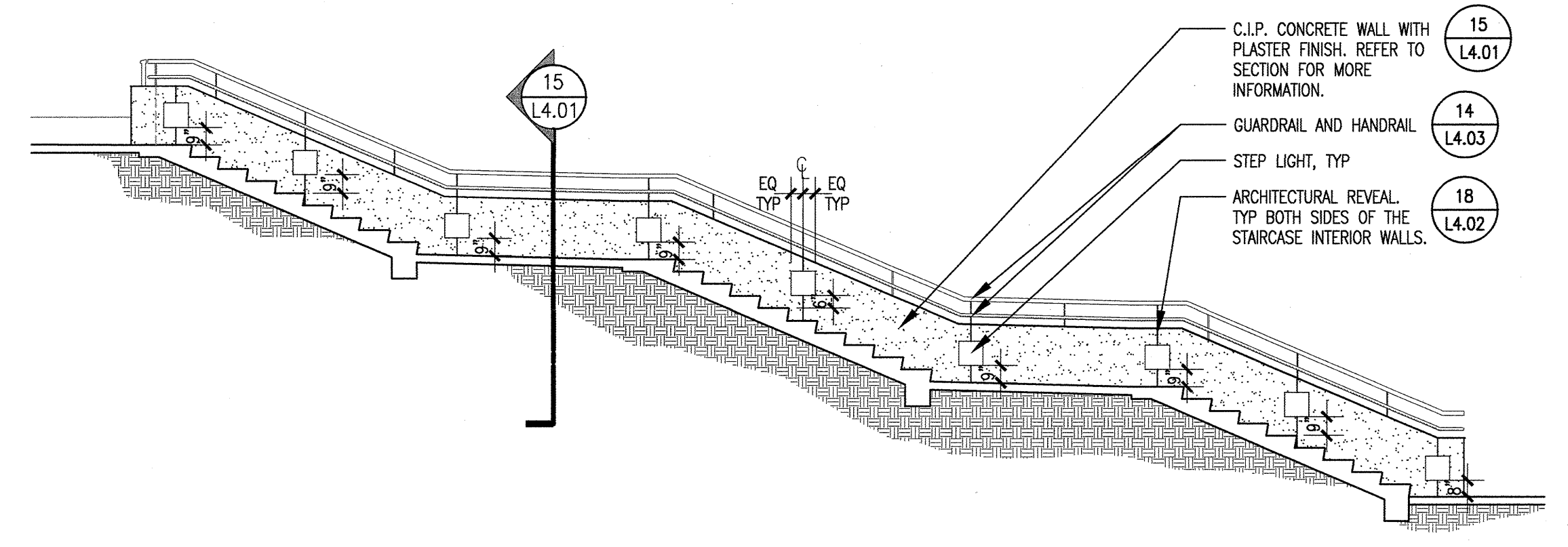
EAST/WEST SECTION THROUGH PLAZA AT BUILDING 10N 1" = 10'-0" 01



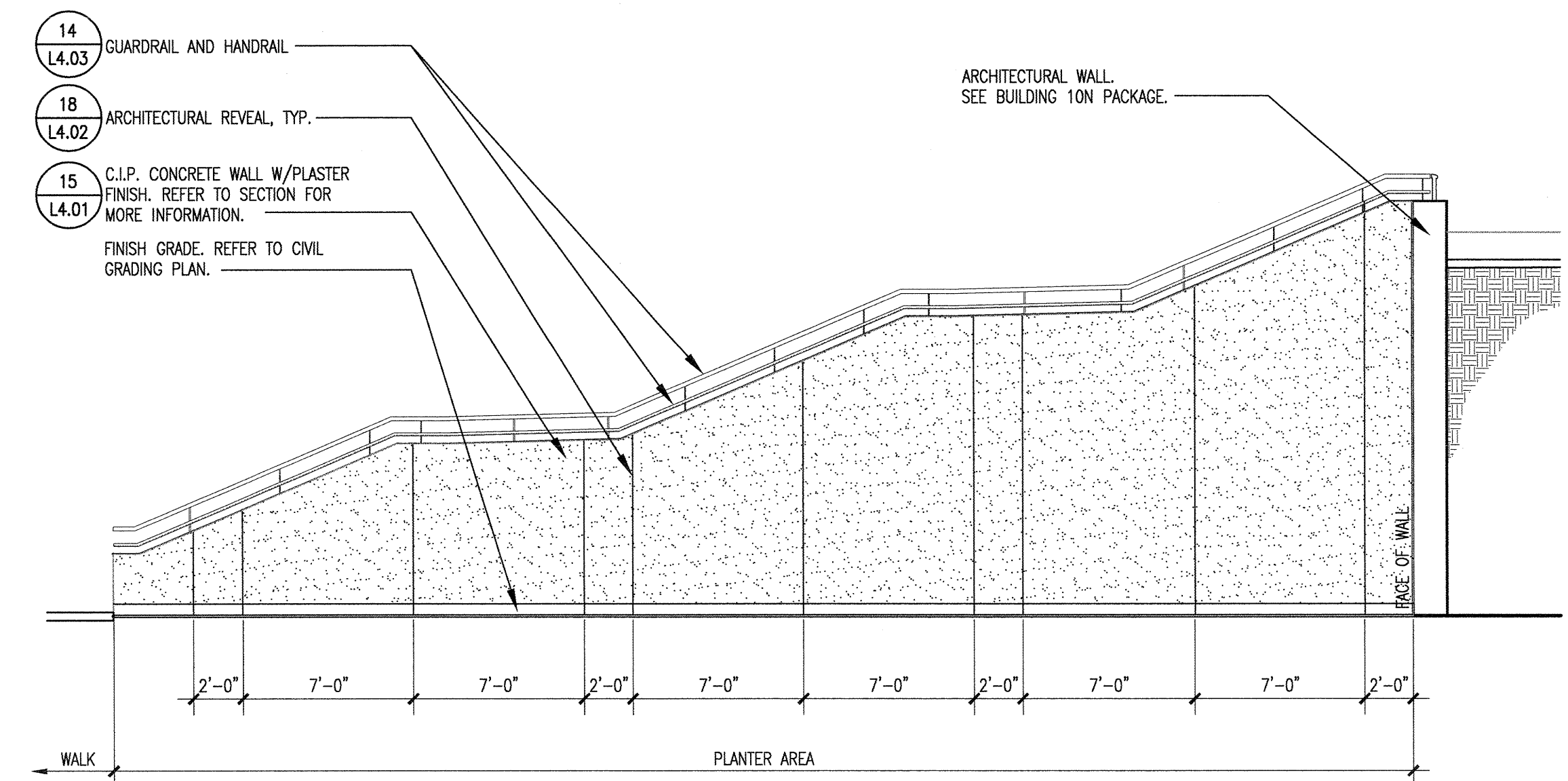
NORTH/SOUTH SECTION THROUGH PLAZA AT BUILDING 10N 1" = 10'-0" 02



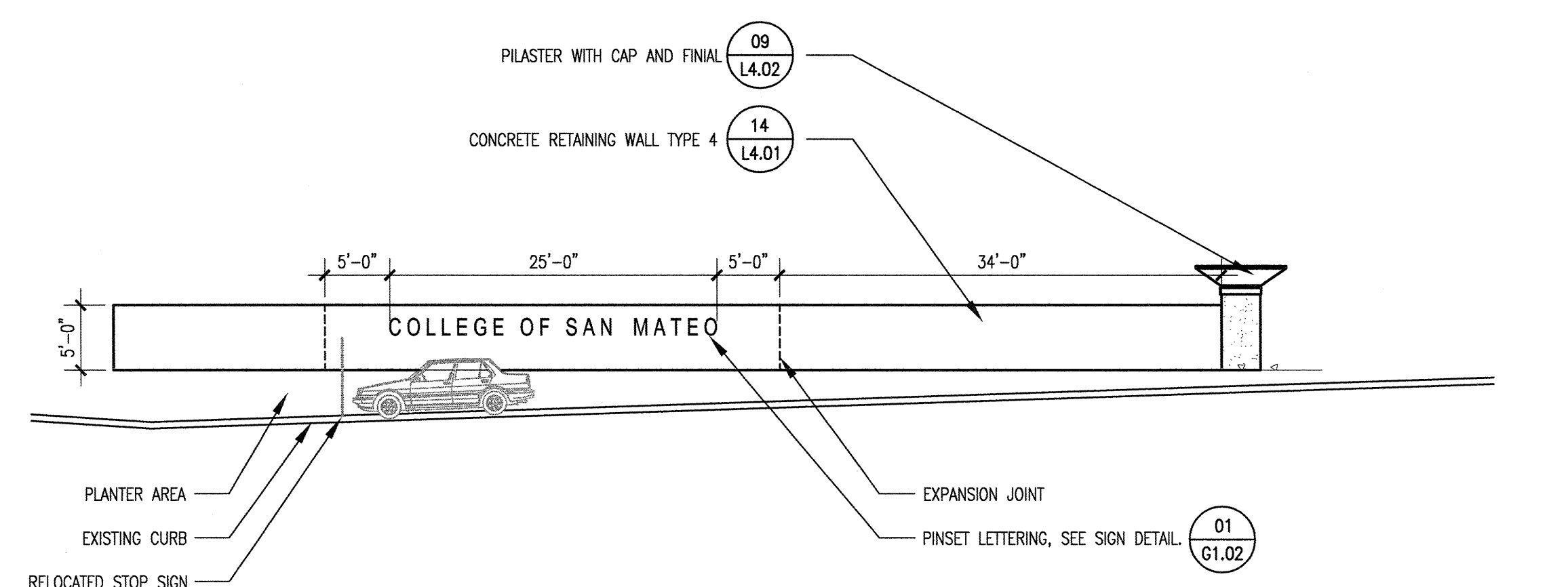
BUILDING 10N STAIRCASE - SOUTHWEST ELEVATION 3/16" = 1'-0" 11



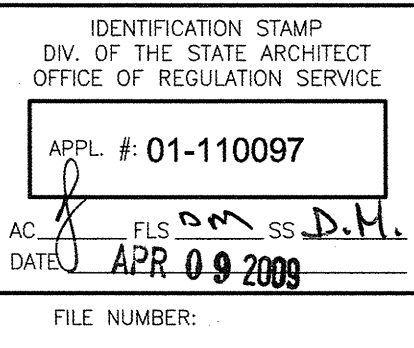
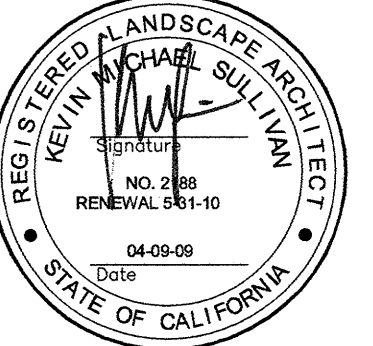
BUILDING 10N STAIRCASE - SECTION 3/16" = 1'-0" 03



BUILDING 10N STAIRCASE - NORTHEAST ELEVATION 3/16" = 1'-0" 12



ENTRY MONUMENT SIGN 1" = 10'-0" 04



This and all other project documents and all ideas, methods and designs incorporated therein are instruments of service. All project documents are the registered property of LPA, AC, [PA] and cannot be lawfully used in whole or in part for any project or purpose except as described in the contractual documents between McCarthy and the client. The contractual documents form the basis for any such project documents and, regardless of any other project documents, no other project documents shall be used without the written consent of McCarthy and LPA. McCarthy and LPA shall not be held responsible for any errors or omissions in any project documents or for any consequences of any such errors or omissions. McCarthy and LPA shall not be held responsible for any errors or omissions in any project documents or for any consequences of any such errors or omissions. LPA and McCarthy shall not be held responsible for any consequences of any such errors or omissions.

Copyright 2008

College of San Mateo  
Site Package  
San Mateo, CA  
Developed for  
San Mateo County Community College District

Revision	Description	Date

Revision	Description	Date

Job No.	27082.30
Date	09 APRIL 2009
Drawn by	AG, RF
Checked by	SM
Scale	AS SHOWN