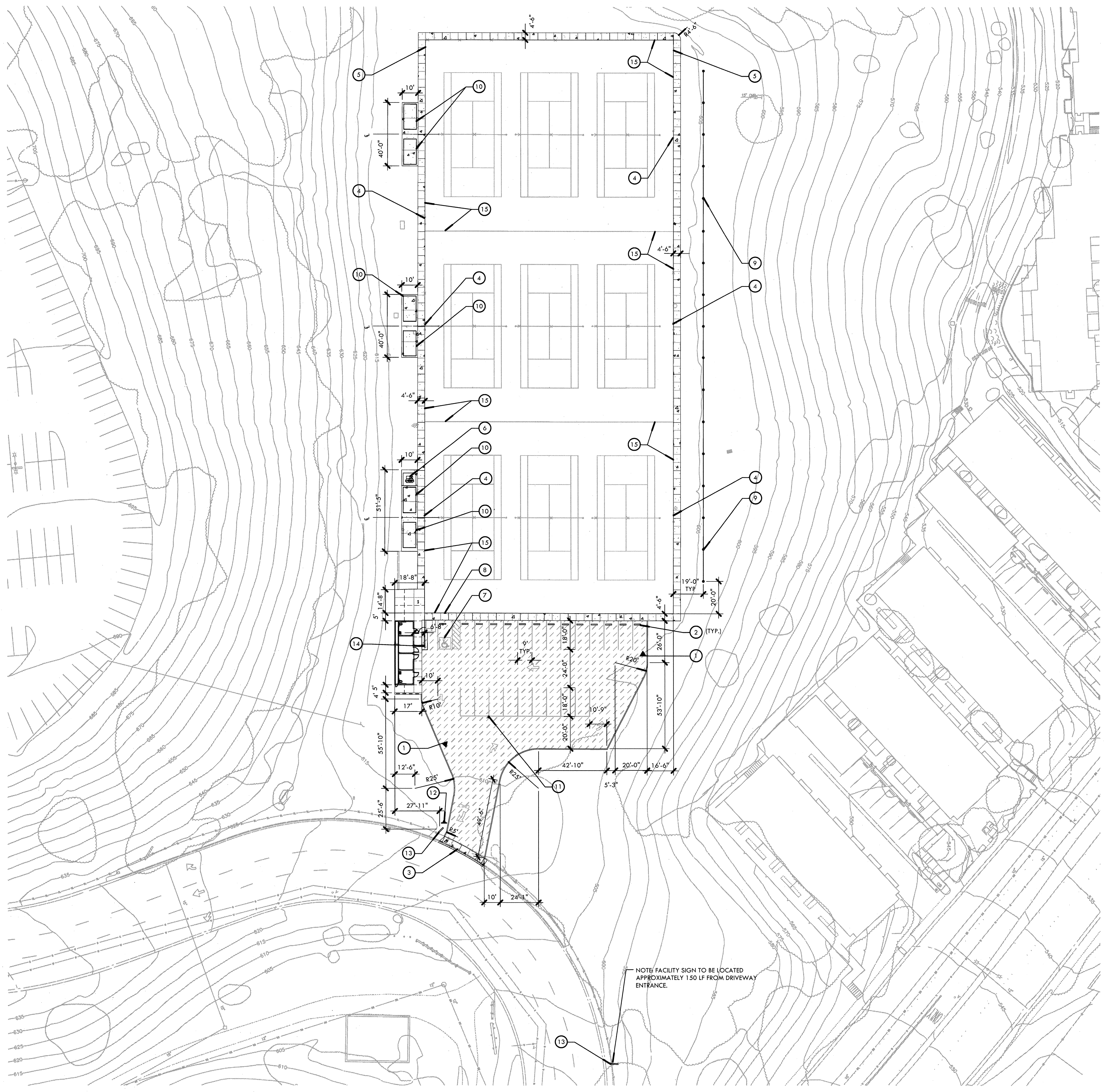


ALL IDEAS, DESIGNS, ARRANGEMENTS, AND PLANS INDICATED OR REPRESENTED BY THIS DRAWING ARE OWNED BY AND THE PROPERTY OF VERDE DESIGN, INC. AND WERE CREATED, EVOLVED, AND DEVELOPED FOR USE ON AND IN CONNECTION WITH THE SPECIFIED PROJECT. NONE OF SUCH IDEAS, DESIGNS, ARRANGEMENTS OR PLANS SHALL BE USED, REPRODUCED, OR PUBLISHED BY ANY METHOD, IN WHOLE OR IN PART, OR DISCLOSED TO ANY PERSON, FIRM, OR CORPORATION FOR ANY PURPOSE WHATSOEVER WITHOUT WRITTEN PERMISSION OF VERDE DESIGN, INC.



**LAYOUT AND MATERIAL NOTES**

1. THE CONTRACTOR SHALL COORDINATE ALL CONSTRUCTION ELEMENTS INCLUDING UTILITY LOCATIONS AND REQUIRED SLEEVING PRIOR TO INSTALLATION. VERIFY CRITICAL DIMENSIONS, REFERENCE POINT LOCATIONS AND CONSTRUCTION CONDITIONS PRIOR TO INITIATING CONSTRUCTION. TEMPORARY BENCHMARKS OR REFERENCE POINTS SHALL BE SET BY THE CONTRACTOR AS NECESSARY. NOTIFY THE DISTRICT'S REPRESENTATIVE IMMEDIATELY SHOULD DISCREPANCY ARISE AND REDIRECT WORK TO AVOID DELAYS.
2. ALL DIMENSIONS SHALL BE VERIFIED IN FIELD AND CHALKED, STRING LINED OR FLAGGED BY THE CONTRACTOR PRIOR TO CONSTRUCTION. ANY MINOR ADJUSTMENTS MADE TO ACHIEVE OVERALL DESIGN LAYOUT SHALL BE ACCEPTED BY THE DISTRICT PRIOR TO CONSTRUCTION.
3. ALL LAYOUT AND GRADES SHALL BE COMPLETED BY A LICENSED SURVEYOR.
4. THE CONTRACTOR SHALL COORDINATE ALL CONSTRUCTION ELEMENTS INCLUDING UTILITY LOCATIONS AND REQUIRED SLEEVING PRIOR TO INSTALLATION. VERIFY CRITICAL DIMENSIONS, REFERENCE POINT LOCATIONS AND CONSTRUCTION CONDITIONS PRIOR TO INITIATING CONSTRUCTION. TEMPORARY BENCHMARKS OR REFERENCE POINTS SHALL BE SET BY THE CONTRACTOR AS NECESSARY. NOTIFY THE DISTRICT'S REPRESENTATIVE IMMEDIATELY SHOULD DISCREPANCY ARISE AND REDIRECT WORK TO AVOID DELAYS.
5. THE INTERFACE OF ALL PROPOSED IMPROVEMENTS TO EXISTING SITE SHALL CONFORM AND BE SMOOTH AND UNIFORM.
6. ALL REINFORCING AND FORMS SHALL BE SECURED IN PLACE AND ACCEPTED BY DISTRICT'S REPRESENTATIVE PRIOR TO PLACING ANY CONCRETE.
7. CONCRETE FINISHES SHALL BE AS NOTED. CONTRACTOR SHALL PROVIDE 4'x4' SAMPLES OF ALL SPECIFIED FINISHES OF CONCRETE USING THE SAME MATERIALS THAT WILL BE USED IN THE ACTUAL CONSTRUCTION FOR EACH TYPE SPECIFIED. SAMPLES SHALL BE PREPARED WELL ENOUGH IN ADVANCE OF SCHEDULED CONCRETE POUR TO ALLOW FOR REVIEW AND POSSIBLE RE-POURING OF UNACCEPTABLE SAMPLES. UNACCEPTABLE SAMPLES SHALL BE RE-PREPARED UNTIL ACCEPTED BY THE DISTRICT'S REPRESENTATIVE. ACCEPTED SAMPLES SHALL BE PROTECTED AND REMAIN ON SITE FOR REFERENCE UNTIL FINAL ACCEPTANCE.
8. ASPHALT SHALL NOT BE INSTALLED UNTIL ALL EDGES AND SITE FURNISHING PADS ARE INSTALLED.

**LAYOUT AND MATERIAL LEGEND**

SYM	DESCRIPTION	DTL REF
	RADIUS DIMENSION (TO INSIDE OF CURVE, TYP.)	
	PROPOSED ANGLE BETWEEN ELEMENTS	
	ALIGN EDGES OF ELEMENTS	
	CENTER LINES	
	ASPHALT PAVING	G D1.0
	CONCRETE PAVING	H D1.0
	EXPANSION JOINT SCORE JOINT	J D1.0
1	EDGE BAND - TYPE 1	K D1.0
2	PRECAST CONCRETE WHEEL STOP	F D2.0
3	CONCRETE DRIVEWAY APRON	I D2.0
4	GATE - TYPE 1	B D2.0
5	GATE - TYPE 2	C D2.0
6	PEDESTAL DRINKING FOUNTAIN	E D1.0
7	ADA PARKING STALL	E D2.0
8	ADA SIGNS	G D2.0
9	ALTERNATE "A" - 10' TALL NETTING - REFER TO SPECIFICATION SECTION 01 03 00	A D3.0
10	(6) 5 ROW AT GRADE BLEACHERS - REFER TO SPECIFICATION SECTION 12 93 00	
11	ONE WAY ONLY SIGN	B D3.0
12	SECURITY LIGHT - REFER TO ELECTRICAL PLANS	
13	FACILITY SIGN	C D3.0
14	KIOSK SIGN	D D3.0
15	NEW BLACK VINYL COATED FENCE FABRIC THROUGHOUT. ALL FENCE POSTS TO BE PAINTED BLACK.	

**LAYOUT AND MATERIAL PLAN**

PROJECT NAME: CANADA COLLEGE TENNIS FACILITY IMPROVEMENTS

PROJECT ADDRESS: 4200 FARM HILL BLVD, REDWOOD CITY, CA 94061

SUBMITTAL	DATE
90% SUBMITTAL	07/30/12
BID SUBMITTAL	08/21/12
CONFORM SET	09/24/12

NO.	REVISIONS	DATE

DRAWN BY: CS      CHECKED BY: DC

DATE ISSUED: 08/21/12      SCALE: 1"=30'-0"

PROJ. NO.: 1207300-1281

SHEET NO.: L-4.0 OF 39 SHEETS

**LAYOUT AND MATERIAL PLAN**

**VERDE DESIGN**  
 LANDSCAPE ARCHITECTURE  
 CIVIL ENGINEERING  
 SPORT PLANNING & DESIGN

2455 The Alameda  
 Santa Clara, CA 95050  
 Tel: 408.965.7200  
 Fax: 408.965.7240  
 www.VerdeDesigninc.com

STAMP

REGISTERED PROFESSIONAL ENGINEER  
 TREVIN COMBAY  
 No. C-56494  
 Signature  
 EXPIRATION DATE:  
 June 30, 2013  
 STATE OF CALIFORNIA

CONSULTANT

SHEET TITLE

PROJECT ADDRESS

DATE

NO. OF SHEETS

DATE