

CODE SUMMARY

BUILDING 3

CODE SUMMARY

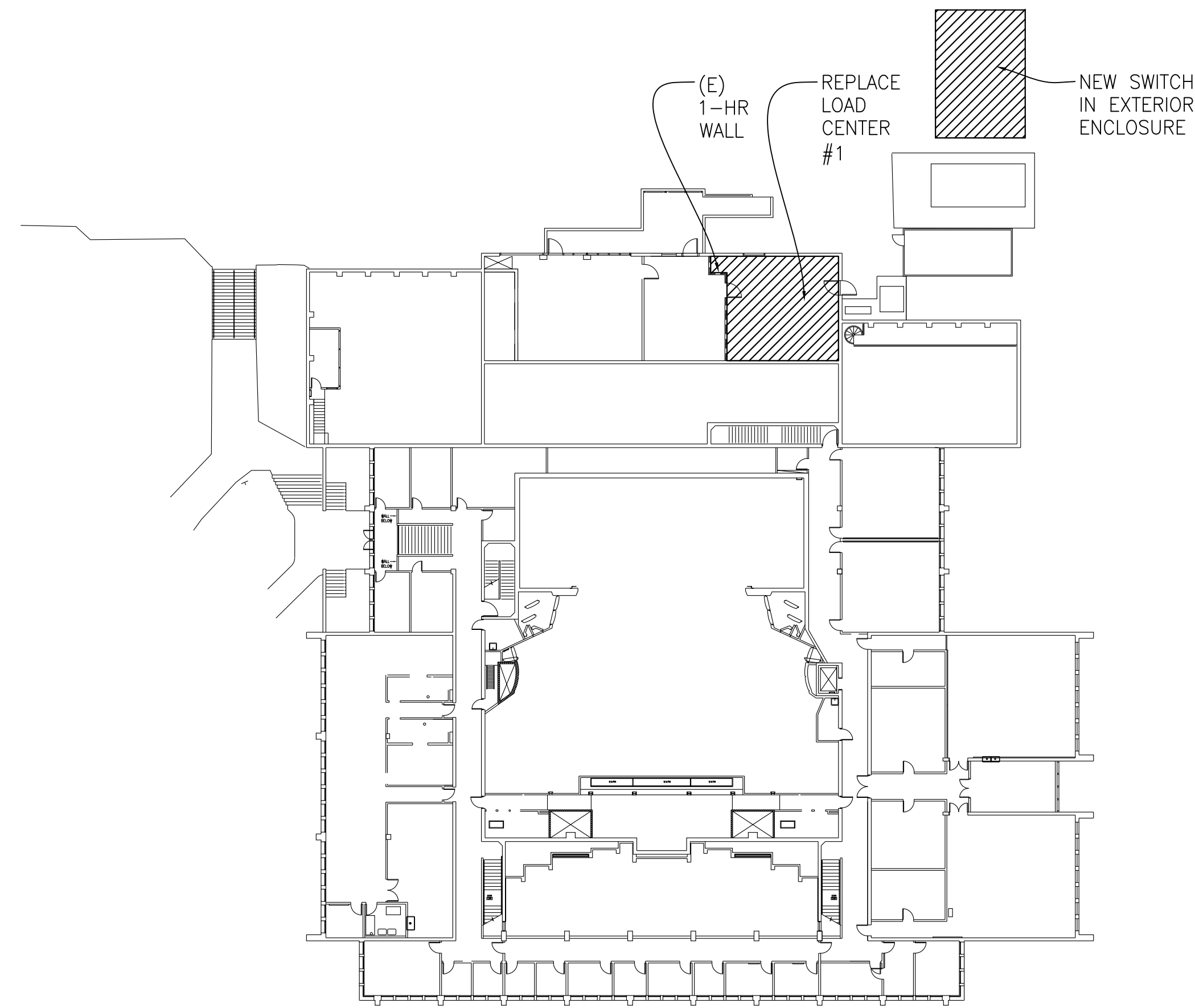
DSA APPL NUMBER: 27796, 105352, 105227, 105993, 106992
 CONSTRUCTION TYPE: TYPE I
 OCCUPANCY: B, A2, A3, H7, A1
 GROSS AREA: GRD FLR 34,434
 2ND FLR 28,865
 TOTAL 63,299 SQFT

BUILDING 3 AREA OF RENOVATION ACCESS TO EMPLOYEE AREAS
 CBC 1123B, EXCEPTION (2): ACCESSIBILITY IS NOT REQUIRED TO NONOCCUPIABLE SPACES ACCESSED ONLY BY LADDERS, CATWALKS, CRAWL SPACES, VERY NARROW PASSAGES OR FREIGHT (NONPASSENGER) ELEVATORS, AND FREQUENTED ONLY BY SERVICE PERSONNEL FOR REPAIR PURPOSES; SUCH SPACES INCLUDE, BUT ARE NOT LIMITED TO, ELEVATOR PITS, ELEVATOR PENTHOUSES, MECHANICAL ROOMS, PIPING OR EQUIPMENT CATWALKS.

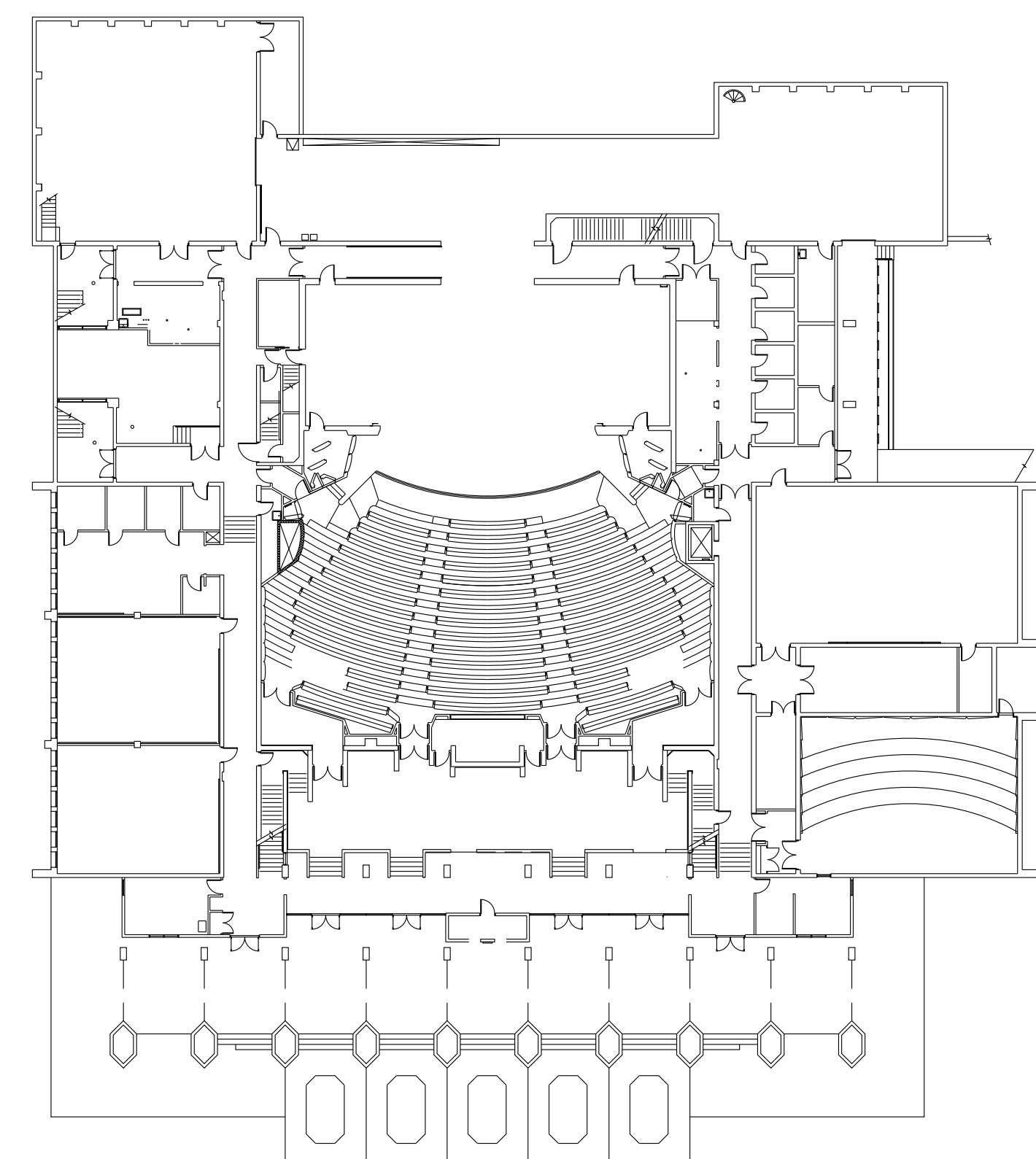
1-HR SEPARATION REQUIRED BETWEEN REFRIGERANT MACHINERY ROOM AND ELECTRICAL EQUIPMENT ROOM (2007 CBC, TABLE 508.2) - PROVIDED PER DSA APPLICATION #106992

FOR LOCATIONS OF (N) FIRE EXTINGUISHERS IN AREAS OF WORK, SEE A2.21

REFERENCE PLANS SCALE: 1" = 30'-0"



SECOND FLOOR



GROUND FLOOR

BUILDING 13

CODE SUMMARY

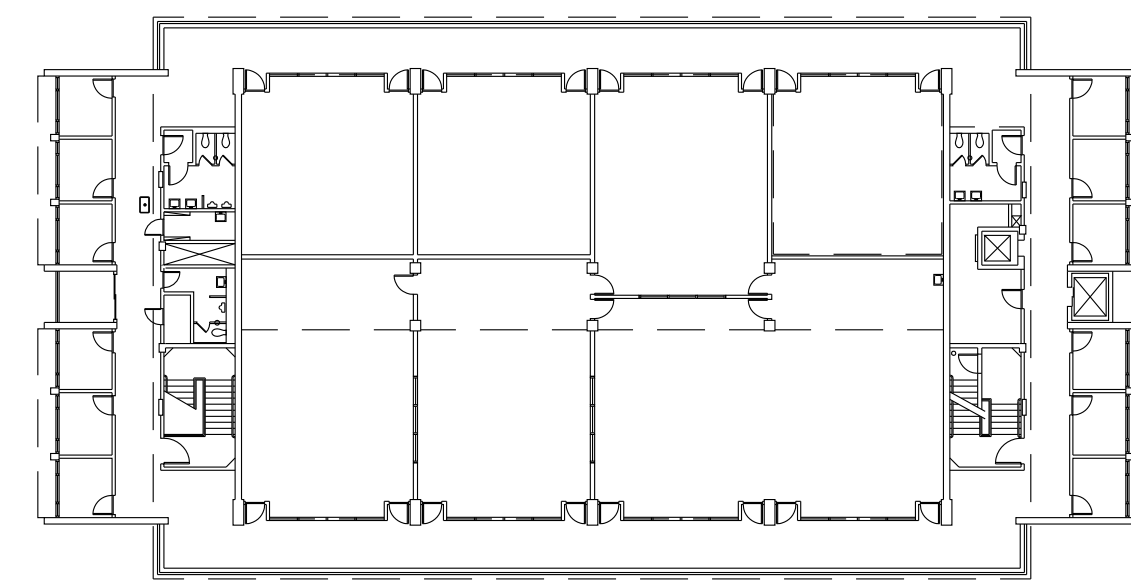
DSA APPL NUMBER: 27796
 CONSTRUCTION TYPE: TYPE I
 OCCUPANCY: B
 GROSS AREA: ENCLOSED OUTDOOR TOTAL
 GRD FLR 7,855 1,107 8,762
 1ST FLR 11,298 0 11,298
 2ND FLR 9,874 1,821 11,695
 TOTAL 31,755 SQFT

BUILDING 13 AREA OF RENOVATION ACCESS TO EMPLOYEE AREAS
 CBC 1123B, EXCEPTION (2): ACCESSIBILITY IS NOT REQUIRED TO NONOCCUPIABLE SPACES ACCESSED ONLY BY LADDERS, CATWALKS, CRAWL SPACES, VERY NARROW PASSAGES OR FREIGHT (NONPASSENGER) ELEVATORS, AND FREQUENTED ONLY BY SERVICE PERSONNEL FOR REPAIR PURPOSES; SUCH SPACES INCLUDE, BUT ARE NOT LIMITED TO, ELEVATOR PITS, ELEVATOR PENTHOUSES, MECHANICAL ROOMS, PIPING OR EQUIPMENT CATWALKS.

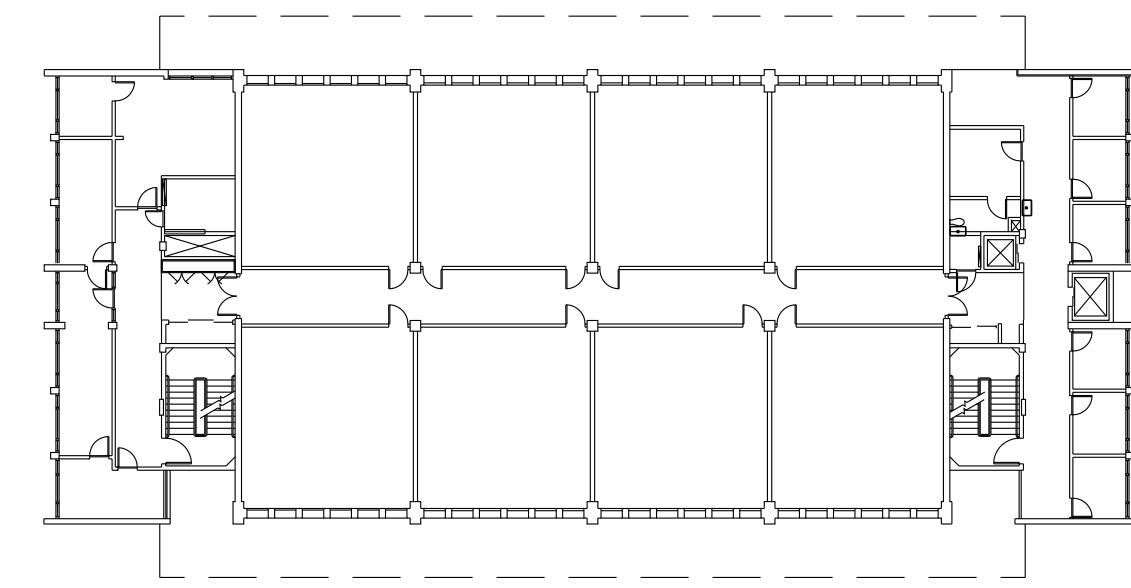
NO AREA SEPARATION REQUIRED BETWEEN ELECTRICAL ROOM AND OTHER AREAS (2007 CBC, TABLE 508.2)

FOR LOCATIONS OF (N) FIRE EXTINGUISHERS IN AREAS OF WORK, SEE A2.41

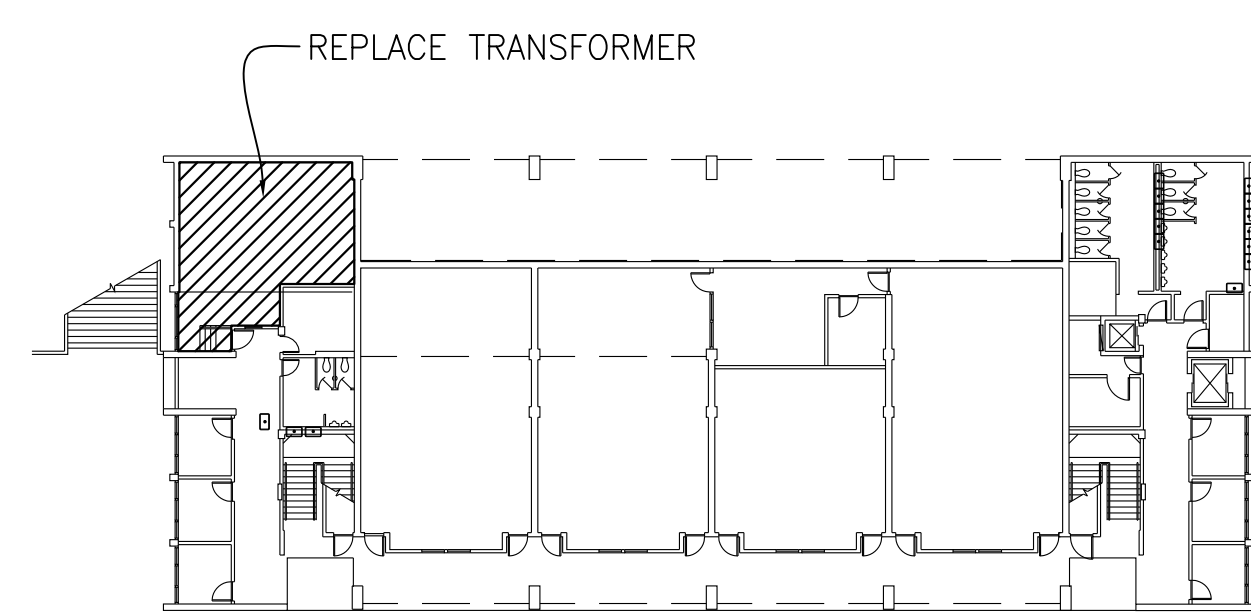
REFERENCE PLANS SCALE: 1" = 30'-0"



SECOND FLOOR



FIRST FLOOR



GROUND FLOOR

BUILDING 30

CODE SUMMARY

DSA APPL NUMBERS: NEW BUILDING
 CONSTRUCTION TYPE: TYPE II B
 OCCUPANCY: B
 GROSS AREA TOTAL 1,173 SQFT

BASIC ALLOWABLE FLOOR AREA: 23,000 SQFT

NO AREA SEPARATION REQUIRED (2007 CBC, TABLE 508.2)

FOR LOCATIONS OF (N) FIRE EXTINGUISHERS IN AREAS OF WORK, SEE A2.31

REFERENCE PLANS SCALE: 1" = 30'-0"

BUILDING 16

CODE SUMMARY

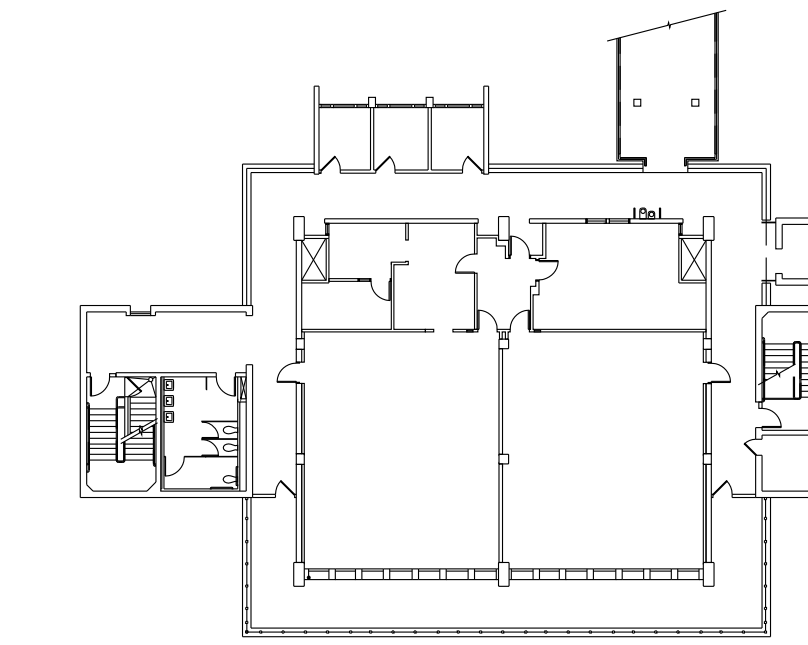
DSA APPL NUMBERS: 27796, 107611
 CONSTRUCTION TYPE: TYPE I
 OCCUPANCY: B
 GROSS AREA: GRD FLR 4,407
 1ST FLR 6,604
 2ND FLR 6,289
 TOTAL 17,300 SQFT

BUILDING 16 AREA OF RENOVATION ACCESS TO EMPLOYEE AREAS
 CBC 1123B, EXCEPTION (2): ACCESSIBILITY IS NOT REQUIRED TO NONOCCUPIABLE SPACES ACCESSED ONLY BY LADDERS, CATWALKS, CRAWL SPACES, VERY NARROW PASSAGES OR FREIGHT (NONPASSENGER) ELEVATORS, AND FREQUENTED ONLY BY SERVICE PERSONNEL FOR REPAIR PURPOSES; SUCH SPACES INCLUDE, BUT ARE NOT LIMITED TO, ELEVATOR PITS, ELEVATOR PENTHOUSES, MECHANICAL ROOMS, PIPING OR EQUIPMENT CATWALKS.

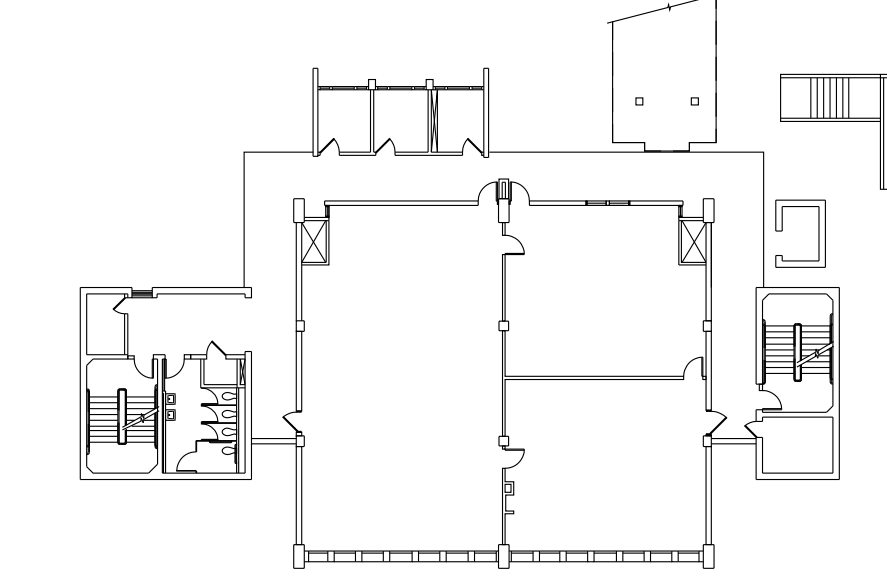
NO AREA SEPARATION REQUIRED BETWEEN ELECTRICAL ROOM AND OTHER AREAS (2007 CBC, TABLE 508.2)

FOR LOCATIONS OF (N) FIRE EXTINGUISHERS IN AREAS OF WORK, SEE A2.31

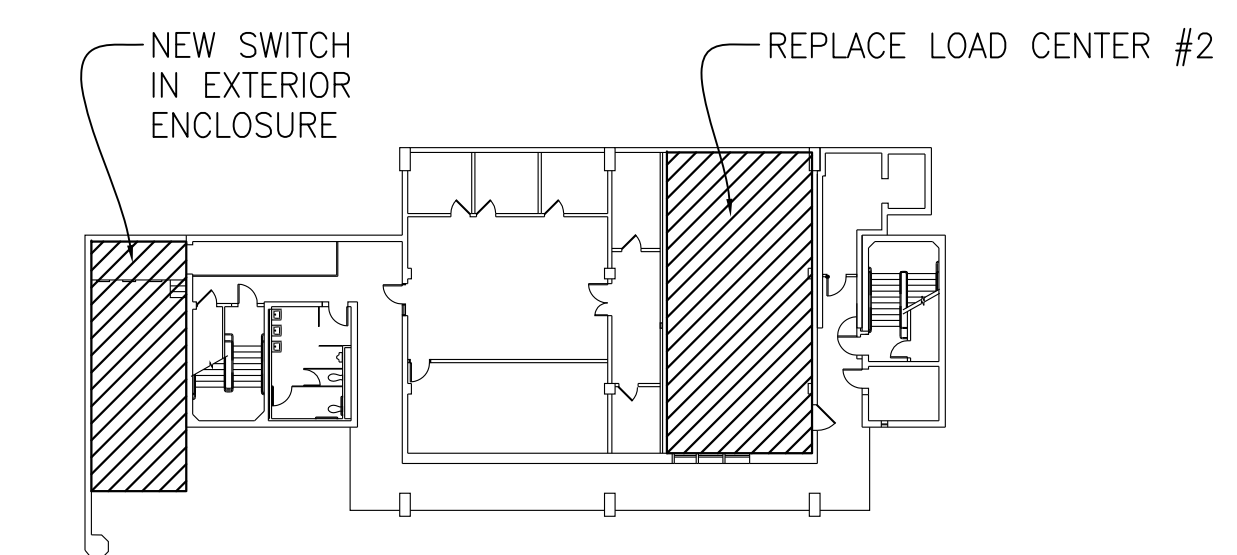
REFERENCE PLANS SCALE: 1" = 30'-0"



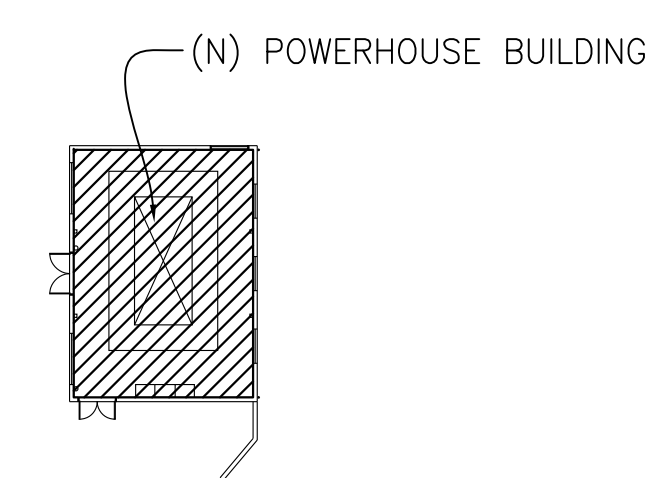
SECOND FLOOR



FIRST FLOOR



GROUND FLOOR



GROUND FLOOR

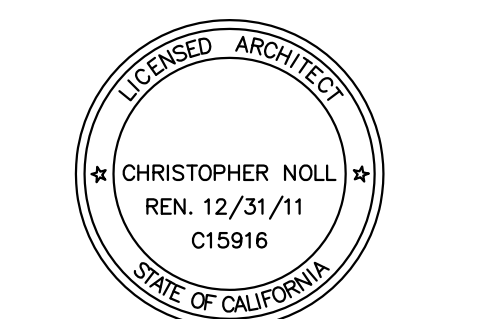
BUILDING 30 ACCESS TO EMPLOYEE AREAS
 CBC 1123B, EXCEPTION (2): ACCESSIBILITY IS NOT REQUIRED TO NONOCCUPIABLE SPACES ACCESSED ONLY BY LADDERS, CATWALKS, CRAWL SPACES, VERY NARROW PASSAGES OR FREIGHT (NONPASSENGER) ELEVATORS, AND FREQUENTED ONLY BY SERVICE PERSONNEL FOR REPAIR PURPOSES; SUCH SPACES INCLUDE, BUT ARE NOT LIMITED TO, ELEVATOR PITS, ELEVATOR PENTHOUSES, MECHANICAL ROOMS, PIPING OR EQUIPMENT CATWALKS.

noll & tam
 architects and planners
 729 Heinz Avenue
 Berkeley, CA 94710
 510.649.8295
 fax 510.649.3008

IDENTIFICATION STAMP
 DIVISION OF THE STATE ARCHITECT
 APPLICATION NUMBER 01-11618
 AC _____ FS _____ BS _____
 DATE _____

CALIFORNIA STATE FIRE MARSHAL
 APPROVED
 APPROVAL OF THIS PLAN DOES NOT AUTHORIZE OR APPROVE ANY
 CONSTRUCTION OR DEVIATION FROM APPLICABLE REGULATIONS. FINAL
 APPROVAL IS SUBJECT TO FIELD INSPECTION. ONE SET OF APPROVED
 PLANS SHALL BE AVAILABLE ON THE PROJECT SITE AT ALL TIMES.
 REVIEWED BY: _____ DATE: _____

CAÑADA COLLEGE
 Electrical Infrastructure Replacement Project
 4200 Farm Hill Blvd
 Redwood City, CA 94061



RECORD DRAWING

SHEET TITLE
Code Summary

REVISIONS		
NO.	DATE	DESCRIPTION

DATE July 9, 2012
 DRAWN TC/AL
 CHECKED MM
 SCALE NA
 JOB NO. 2921.01

SHEET NUMBER
GO.02

