

**CODE SUMMARY**

**BUILDING 3**

**CODE SUMMARY**

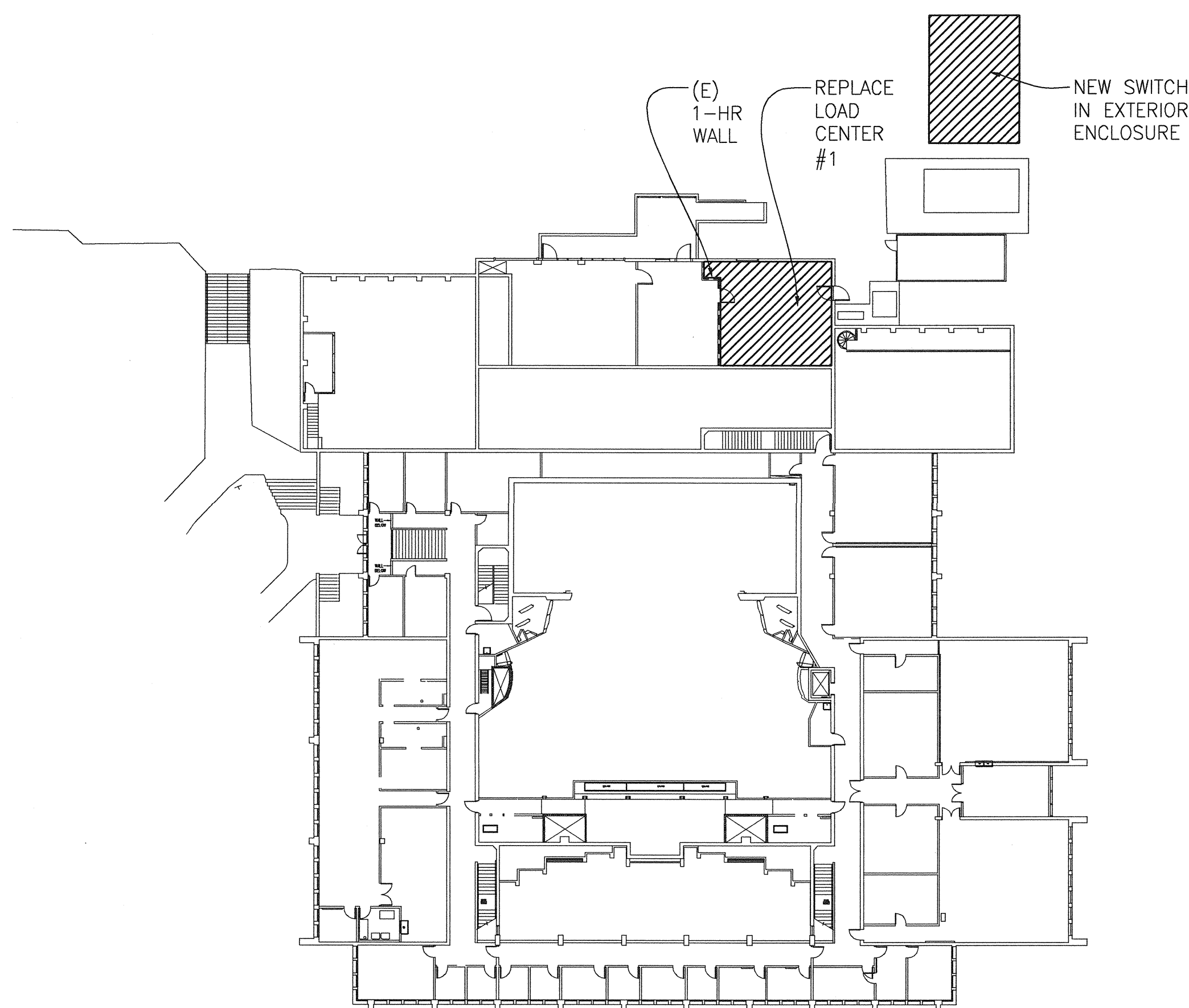
DSA APPL NUMBER: 27796, 105352, 105227, 105993, 106992  
 CONSTRUCTION TYPE: TYPE I  
 OCCUPANCY: B, A2, A3, H7, A1  
 GROSS AREA: GRD FLR 34,434  
 2ND FLR 28,865  
 TOTAL 63,299 SQFT

**BUILDING 3 AREA OF RENOVATION ACCESS TO EMPLOYEE AREAS**  
 CBC 1123B, EXCEPTION (2): ACCESSIBILITY IS NOT REQUIRED TO NONOCCUPIABLE SPACES ACCESSED ONLY BY LADDERS, CATWALKS, CRAWL SPACES, VERY NARROW PASSAGES OR FREIGHT (NONPASSENGER) ELEVATORS, AND FREQUENTED ONLY BY SERVICE PERSONNEL FOR REPAIR PURPOSES; SUCH SPACES INCLUDE, BUT ARE NOT LIMITED TO, ELEVATOR PITS, ELEVATOR PENTHOUSES, MECHANICAL ROOMS, PIPING OR EQUIPMENT CATWALKS.

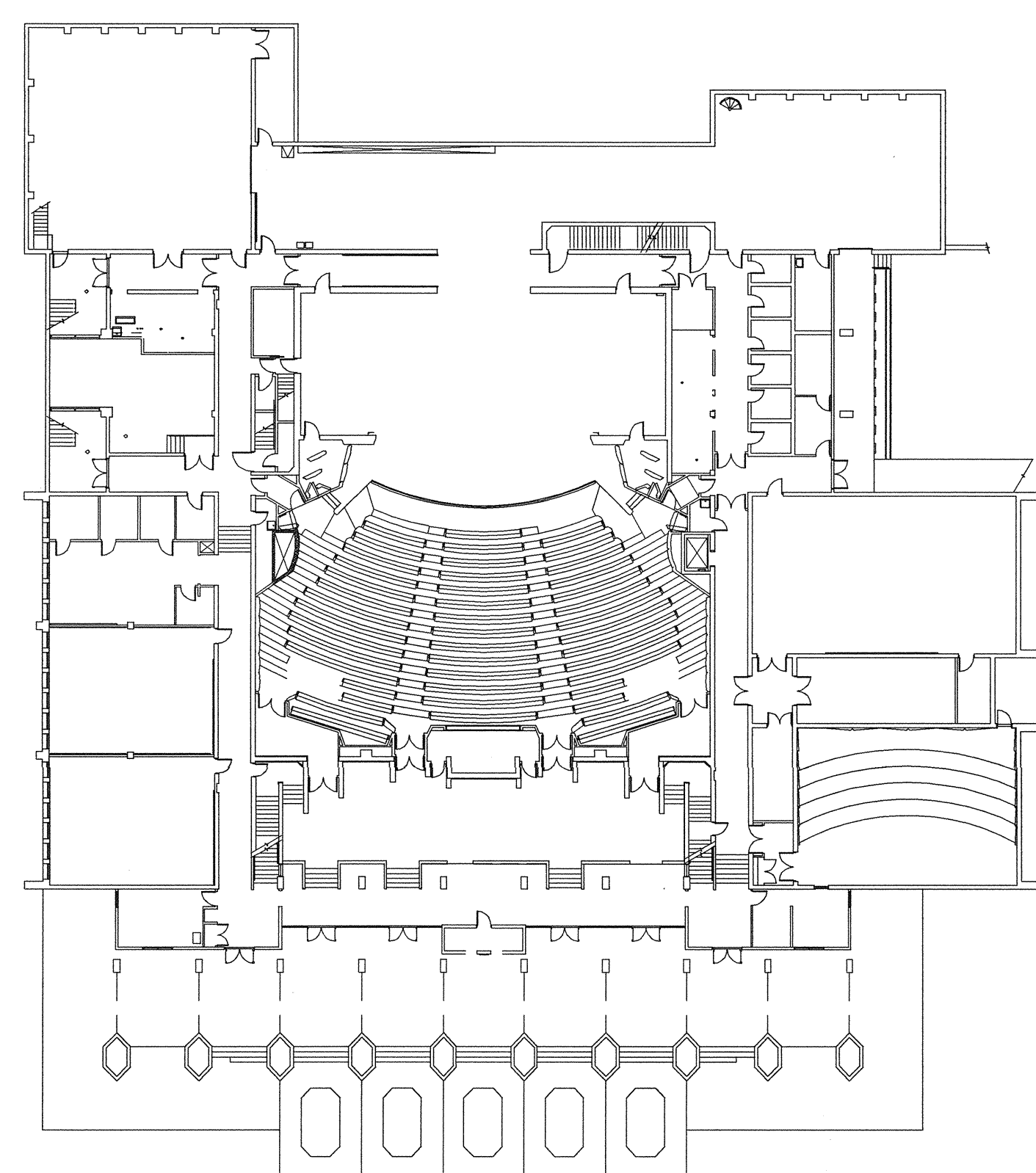
1-HR SEPARATION REQUIRED BETWEEN REFRIGERANT MACHINERY ROOM AND ELECTRICAL EQUIPMENT ROOM (2007 CBC, TABLE 508.2) - PROVIDED PER DSA APPLICATION #106992

FOR LOCATIONS OF (N) FIRE EXTINGUISHERS IN AREAS OF WORK, SEE A2.21

REFERENCE PLANS SCALE: 1" = 30'-0"



SECOND FLOOR



GROUND FLOOR

**BUILDING 13**

**CODE SUMMARY**

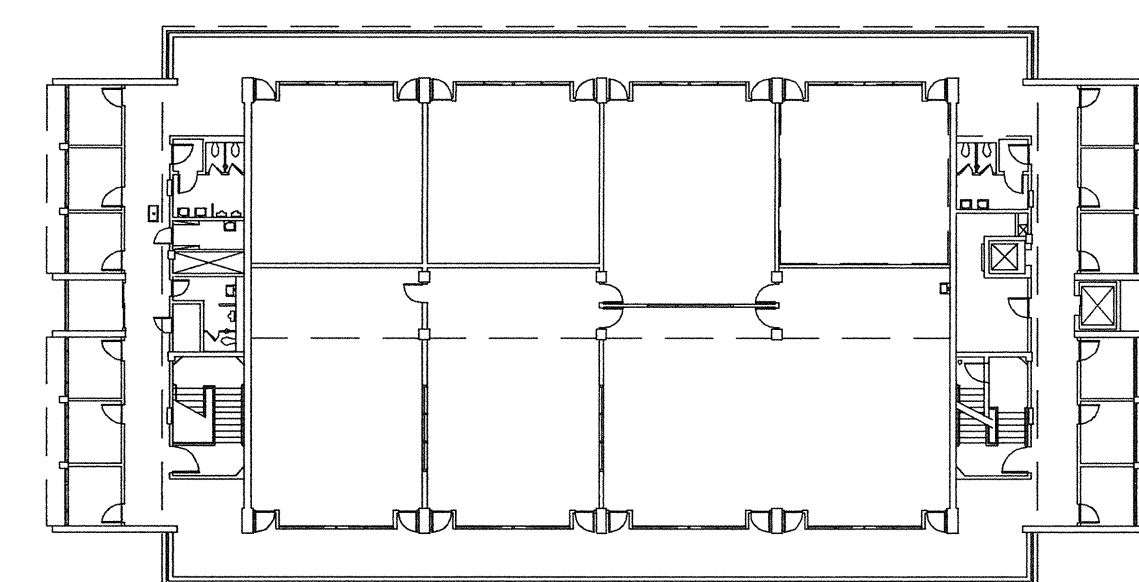
DSA APPL NUMBER: 27796  
 CONSTRUCTION TYPE: TYPE I  
 OCCUPANCY: B  
 GROSS AREA: ENCLOSED OUTDOOR TOTAL  
 GRD FLR 7,655 1,107 8,762  
 1ST FLR 11,298 0 11,298  
 2ND FLR 9,874 1,821 11,695  
 TOTAL 31,755 SQFT

**BUILDING 13 AREA OF RENOVATION ACCESS TO EMPLOYEE AREAS**  
 CBC 1123B, EXCEPTION (2): ACCESSIBILITY IS NOT REQUIRED TO NONOCCUPIABLE SPACES ACCESSED ONLY BY LADDERS, CATWALKS, CRAWL SPACES, VERY NARROW PASSAGES OR FREIGHT (NONPASSENGER) ELEVATORS, AND FREQUENTED ONLY BY SERVICE PERSONNEL FOR REPAIR PURPOSES; SUCH SPACES INCLUDE, BUT ARE NOT LIMITED TO, ELEVATOR PITS, ELEVATOR PENTHOUSES, MECHANICAL ROOMS, PIPING OR EQUIPMENT CATWALKS.

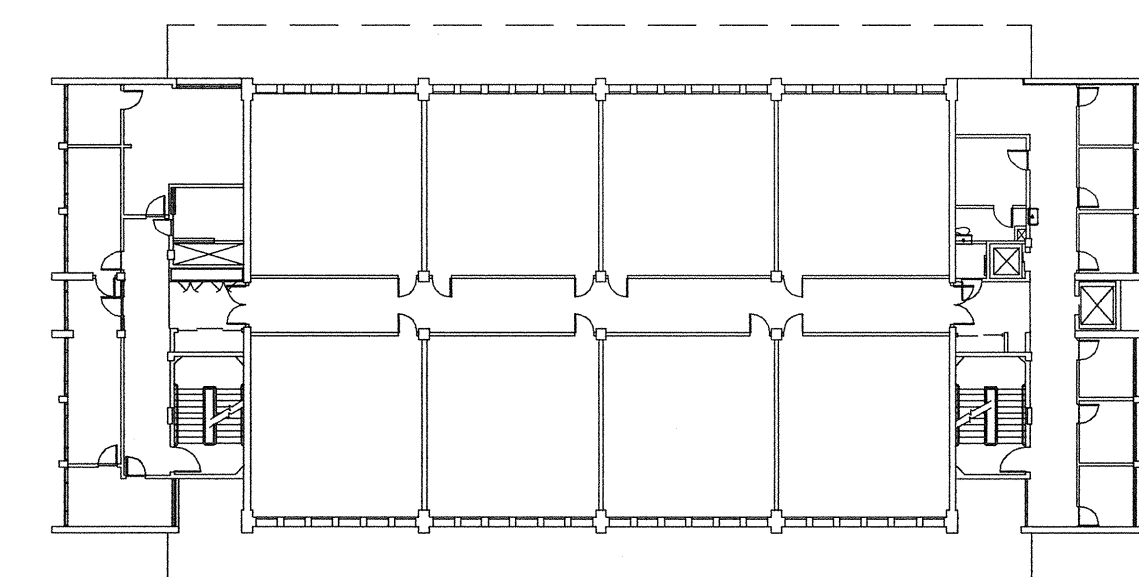
NO AREA SEPARATION REQUIRED BETWEEN ELECTRICAL ROOM AND OTHER AREAS (2007 CBC, TABLE 508.2)

FOR LOCATIONS OF (N) FIRE EXTINGUISHERS IN AREAS OF WORK, SEE A2.41

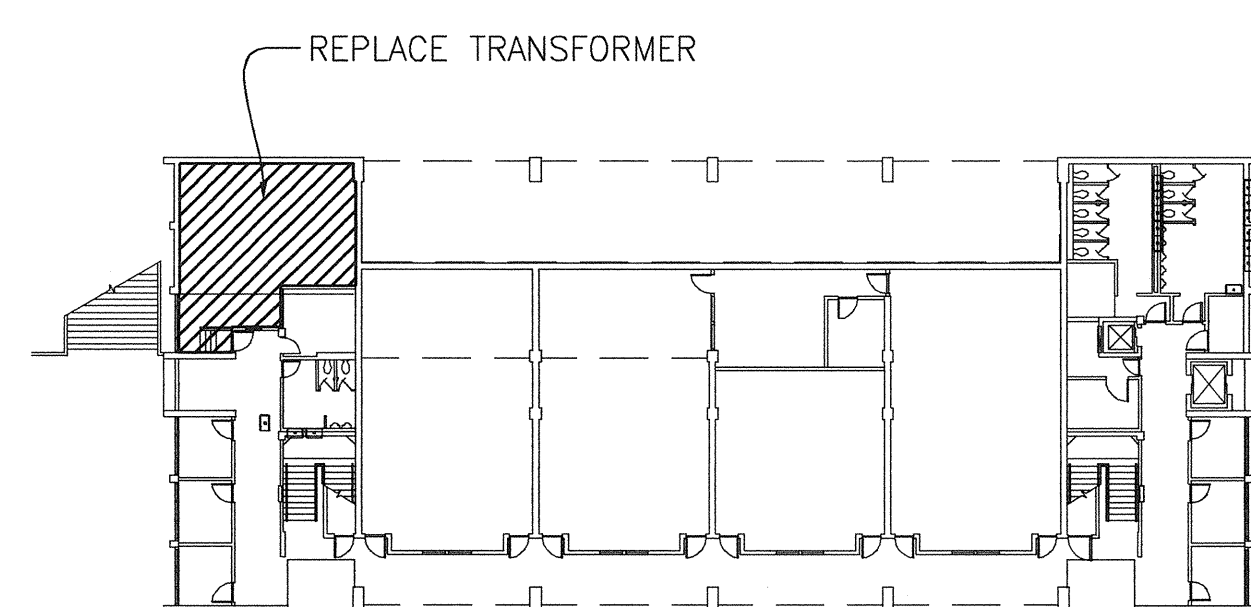
REFERENCE PLANS SCALE: 1" = 30'-0"



SECOND FLOOR



FIRST FLOOR



GROUND FLOOR

**BUILDING 30**

**CODE SUMMARY**

DSA APPL NUMBERS: NEW BUILDING  
 CONSTRUCTION TYPE: TYPE II B  
 OCCUPANCY: B  
 GROSS AREA: TOTAL 1,173 SQFT

BASIC ALLOWABLE FLOOR AREA: 23,000 SQFT

NO AREA SEPARATION REQUIRED (2007 CBC, TABLE 508.2)

FOR LOCATIONS OF (N) FIRE EXTINGUISHERS IN AREAS OF WORK, SEE A2.31

REFERENCE PLANS SCALE: 1" = 30'-0"

**BUILDING 16**

**CODE SUMMARY**

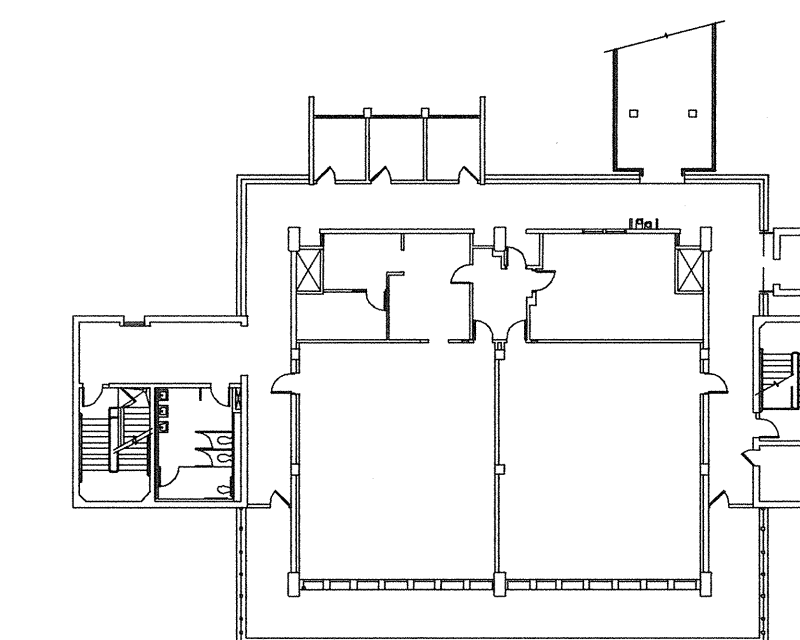
DSA APPL NUMBERS: 27796, 107611  
 CONSTRUCTION TYPE: TYPE I  
 OCCUPANCY: B  
 GROSS AREA: GRD FLR 4,407  
 1ST FLR 6,604  
 2ND FLR 6,289  
 TOTAL 17,300 SQFT

**BUILDING 16 AREA OF RENOVATION ACCESS TO EMPLOYEE AREAS**  
 CBC 1123B, EXCEPTION (2): ACCESSIBILITY IS NOT REQUIRED TO NONOCCUPIABLE SPACES ACCESSED ONLY BY LADDERS, CATWALKS, CRAWL SPACES, VERY NARROW PASSAGES OR FREIGHT (NONPASSENGER) ELEVATORS, AND FREQUENTED ONLY BY SERVICE PERSONNEL FOR REPAIR PURPOSES; SUCH SPACES INCLUDE, BUT ARE NOT LIMITED TO, ELEVATOR PITS, ELEVATOR PENTHOUSES, MECHANICAL ROOMS, PIPING OR EQUIPMENT CATWALKS.

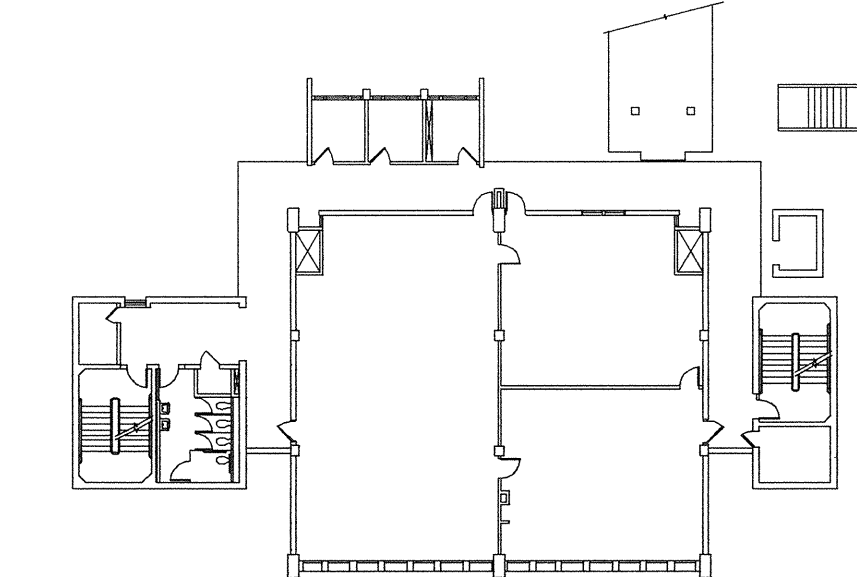
NO AREA SEPARATION REQUIRED BETWEEN ELECTRICAL ROOM AND OTHER AREAS (2007 CBC, TABLE 508.2)

FOR LOCATIONS OF (N) FIRE EXTINGUISHERS IN AREAS OF WORK, SEE A2.31

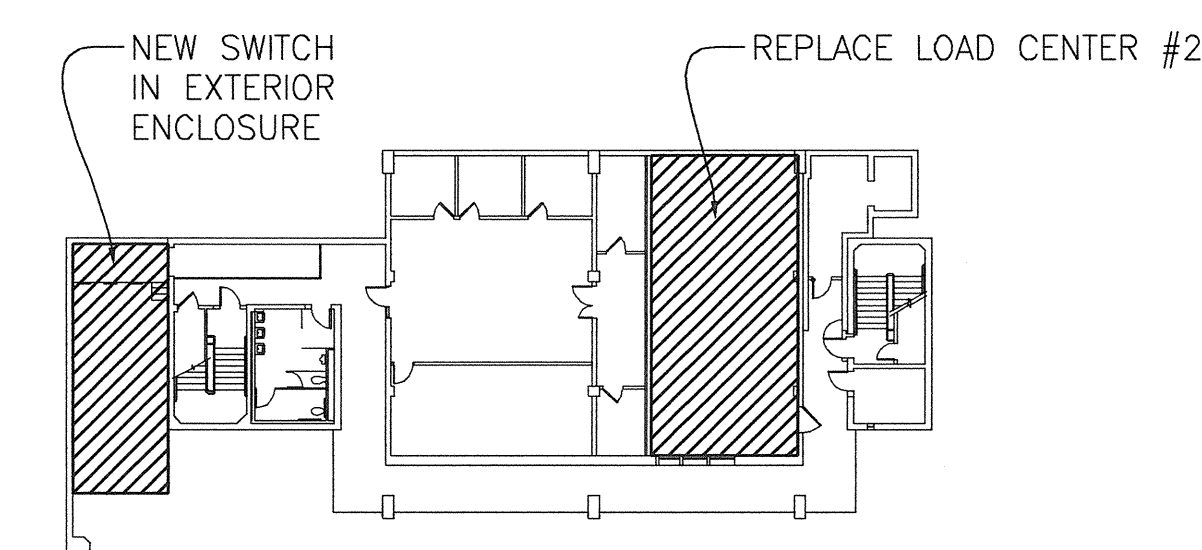
REFERENCE PLANS SCALE: 1" = 30'-0"



SECOND FLOOR

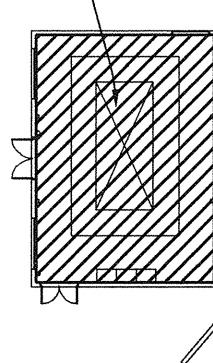


FIRST FLOOR



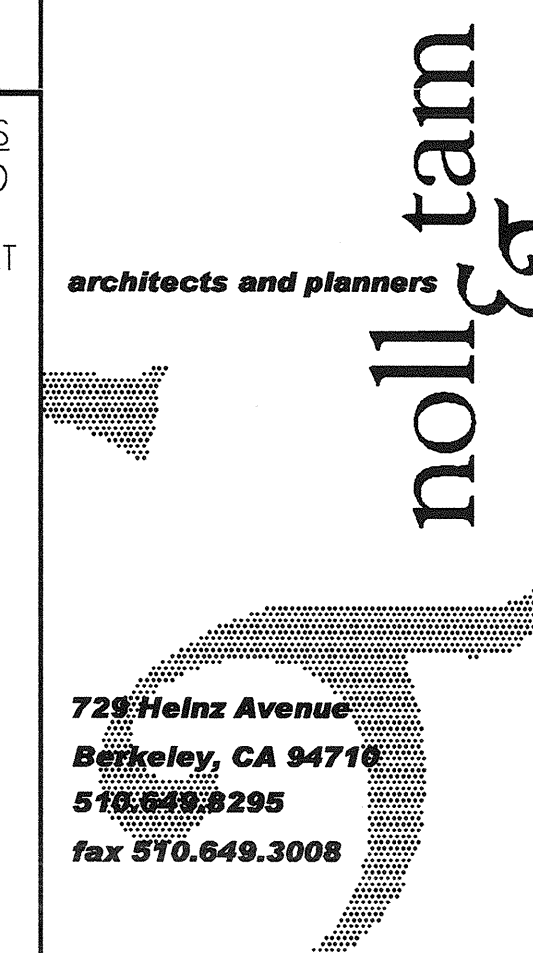
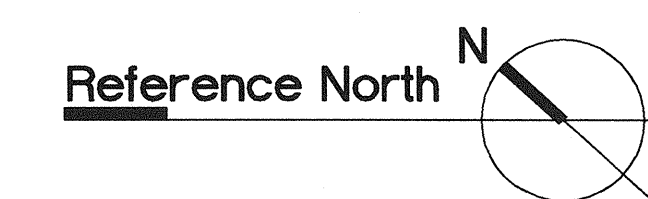
GROUND FLOOR

(N) POWERHOUSE BUILDING



GROUND FLOOR

**BUILDING 30 ACCESS TO EMPLOYEE AREAS**  
 CBC 1123B, EXCEPTION (2): ACCESSIBILITY IS NOT REQUIRED TO NONOCCUPIABLE SPACES ACCESSED ONLY BY LADDERS, CATWALKS, CRAWL SPACES, VERY NARROW PASSAGES OR FREIGHT (NONPASSENGER) ELEVATORS, AND FREQUENTED ONLY BY SERVICE PERSONNEL FOR REPAIR PURPOSES; SUCH SPACES INCLUDE, BUT ARE NOT LIMITED TO, ELEVATOR PITS, ELEVATOR PENTHOUSES, MECHANICAL ROOMS, PIPING OR EQUIPMENT CATWALKS.



IDENTIFICATION STAMP  
 DIVISION OF THE STATE ARCHITECT  
 APPLICATION NUMBER: 05-111618  
 AC: DS FL: AE SA: JK/AB  
 DATE: 2/9/11  
 CALIFORNIA STATE FIRE MARSHAL  
 APPROVED  
APPROVAL OF THIS PLAN DOES NOT AUTHORIZE OR APPROVE ANY DESIGN OR CONSTRUCTION FROM APPLICABLE REGULATORY FINAL APPROVAL IS SUBJECT TO FIELD INSPECTION. ONE SET OF APPROVED PLANS SHALL BE AVAILABLE ON THE PROJECT SITE AT ALL TIMES.  
 REVIEWED BY: \_\_\_\_\_ DATE: \_\_\_\_\_

**CAÑADA COLLEGE**  
 Electrical Infrastructure Replacement Project  
 4200 Farm Hill Blvd  
 Redwood City, CA 94061

LICENSED ARCHITECT  
 CHRISTOPHER NOLL  
 REN. 12/31/11  
 C15916  
**BID SET**

SHEET TITLE  
**Code Summary**

REVISIONS		
NO.	DATE	DESCRIPTION

DATE: **January 14, 2011**  
 DRAWN: **TC/AL**  
 CHECKED: **MM**  
 SCALE: **NA**  
 JOB NO.: **2921.01**  
 SHEET NUMBER  
**GO.02**