

2122 Bluffton Dr., Pleasanton, CA 94588  
 (925) 945-9444 Fax: (925) 945-9719

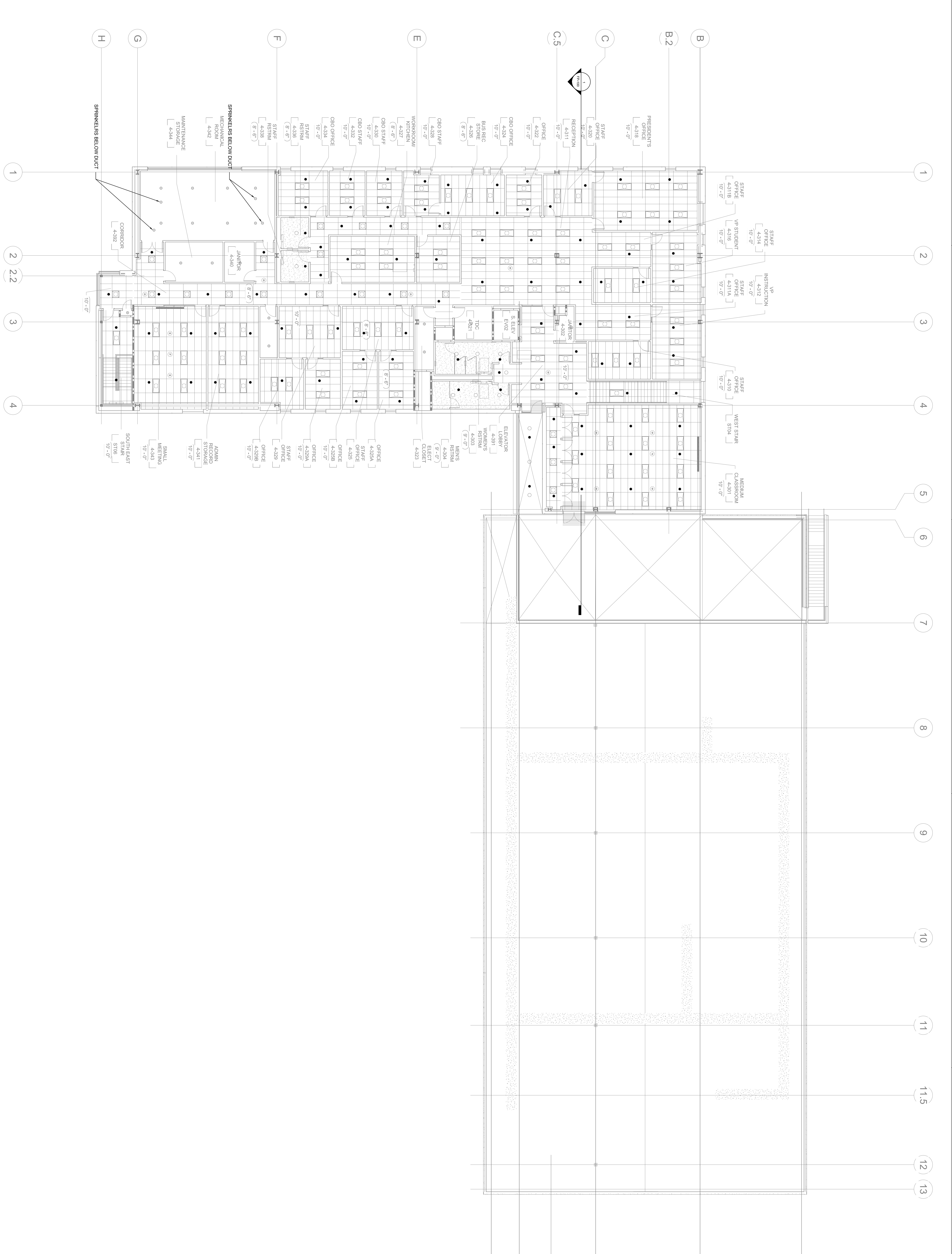
| NO. | ISSUE/REVISIONS                                      | DATE     |
|-----|--|----------|
| 1   | 100% Schematic Design SUBMITTAL                      | 04/20/18 |
| 2   | 50% DESIGN DEVELOPMENT SUBMITTAL                     | 06/13/18 |
| 3   | 100% DESIGN DEVELOPMENT SUBMITTAL                    | 07/20/18 |
| 4   | DSA INCIDENT #1 CALCULATION, ROUND GRADING UTILITIES | 09/20/18 |
| 5   | DSA INCIDENT #2 80% REVIEW                           | 10/10/18 |
| 6   | DSA INCIDENT #3: STRUCTURE & PANELS                  | 11/11/18 |
| 7   | DSA INCIDENT #4: SIGN REVIEW                         | 11/16/18 |
| 8   | DSA INCIDENT #5: BACK CHECK                          | 11/19/18 |
| 9   | DSA INCIDENT #6: 90% REVIEW                          | 12/19/18 |
| 10  | DESIGN DEVELOPMENT REVIEW AND REVISIONS              | 02/09/19 |
| 11  | DSA INCIDENT #7: BACKCHECK                           | 04/12/19 |
| 14  | AS-BUILT DRAWINGS                                    | 02/07/11 |

DIVISION OF THE STATE ARCHITECT  
**APPL # 01-110117**  
 FILE # 41421  
 AC \_\_\_\_\_ PL3 \_\_\_\_\_  
 SS8 \_\_\_\_\_ DATE \_\_\_\_\_  
**IDENTIFICATION STAMP**  
**Increment 3**

**SKYLINE COLLEGE**  
 SAN MATEO COUNTY  
 COMMUNITY COLLEGE  
 DISTRICT  
**CIP2 DESIGN-BUILD**  
**PROJECT BUILDING 4**  
**INCREMENT 3**

PROJECT NO. 07065.00  
 DATE: 02/07/11  
 SCALE: 3/32" = 1'-0"  
 DRAWN BY: CN  
 CHECKED BY: CM

**LEVEL 3 FIRE PROTECTION REFLECTED CEILING PLAN**



**Sprinkler Head Information**

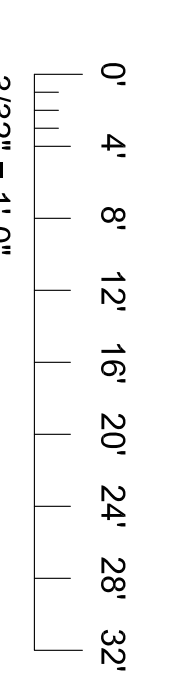
| Symbol           | Brand | Model  | SIN #  | Description              | Size  | Temperature | K    | Finish | Escutcheon | Quantity |
|------------------|-------|--------|--------|--------------------------|-------|-------------|------|--------|------------|----------|
| ○                | Tyco  | TY-EC  | TY5237 | EC Semi-Recessed Pendant | 17/32 | 155°        | 11.2 | Chrome | Chrome     | 2        |
| ●                | Tyco  | TY-EC  | TY5237 | EC Semi-Recessed Pendant | 17/32 | 200°        | 11.2 | Chrome | Chrome     | 1        |
| ●                | Tyco  | TY-FRB | TY3231 | Semi-Recessed Pendant    | 1/2   | 155°        | 5.6  | Chrome | Chrome     | 100      |
| ●                | Tyco  | TY-FRB | TY3231 | Semi-Recessed Pendant    | 1/2   | 200°        | 5.6  | Chrome | Chrome     | -        |
| ◀                | Tyco  | TY-FRB | TY3331 | Standard Sidewall        | 1/2   | 200°        | 5.6  | Brass  | n/a        | -        |
| ○                | Tyco  | TY-FRB | TY3131 | Standard Upright         | 1/2   | 155°        | 5.6  | Brass  | n/a        | 22       |
| Total All Sheets |       |        |        |                          |       |             |      |        |            | 603      |

**Standard Symbols**

- Riser Location
- Hangar
- Hangar with rod stiffener
- Two Way Brace
- Four Way Brace
- Hydraulic Node
- End of Line Restraint

**Sprinkler Head Symbols**

- Standard Upright
- Semi-Recessed Pendant
- EC Semi-recessed Pendant
- Semi-Recessed Dry Pendant
- Standard Horizontal Sidewall



3/32" = 1'-0"

All drawings and written material appearing herein constitute original and unpublished work of the Architect/Engineer and may not be duplicated, used or disclosed without consent of Architect/Engineer.

If this drawing is not 30"x42" then the drawing has been revised from its original size. Note scales must be adjusted. This line should be equal to one inch.

**1 LEVEL 3 FIRE PROTECTION REFLECTED CEILING PLAN**  
 3/32" = 1'-0"