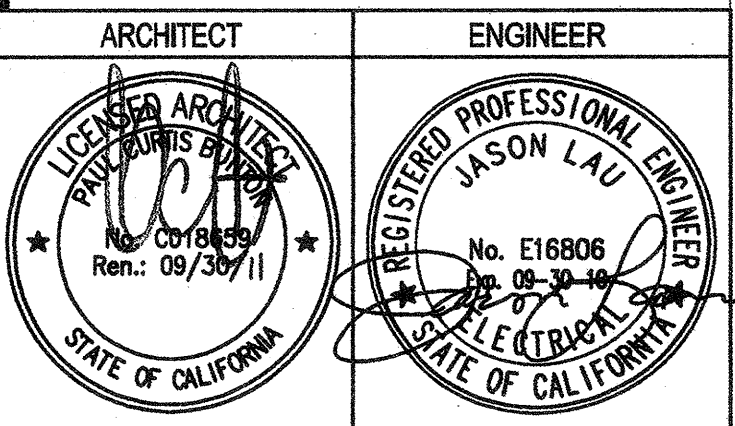


PROJECT 2007-0731
CONTACT Valeria Torres



717 Market Street
Suite 500
San Francisco, CA 94103
TEL 415.489.7240
FAX 415.489.7289
www.interfaceengineering.com



- GENERAL NOTES
- This sheet is part of a set and is not to be used alone.
 - This sheet is not to be used for construction unless the architect's stamp and signature appear on the drawings and the status box indicates drawings have been released for construction.
 - These plans and prints thereof, as instruments of service, are owned by the architect and are for use on this project only. Reproduction and/or distribution without the prior written consent of the architect is forbidden.
 - Copyright Bunton Clifford Associates, 2007

REMARKS	DATE
ADDENDUM NO. 1	09/19/09

DRAWING STATUS	DATE
● USA BLANK CHECK	08/29/08
● USA BACK CHECK	01/22/09
● BIDDING (BD #6653)	09/18/09
○ CONSTRUCTION	

FILE NO. 41-C1
IDENTIFICATION STAMP
DIV. OF THE STATE ARCHITECT
01 - 110074
AC _____ FLS _____ SS _____
DATE _____

BUILDINGS 5 & 6 RENOVATIONS

San Mateo County Community College District

BID ADDENDA

APPROVED
BY OF THE STATE ARCHITECT
AC *JM* FLS *AC* SS *SS*
APPL. NO. 110074, DATE 2/12/10

CAÑADA COLLEGE
4200 Farm Hill Boulevard
Redwood City, CA 94061

FIRE ALARM PLAN
THIRD FLOOR

Date 08/29/08
Scale AS NOTED
Project Number 07013
Drawing Number **FA3.3**

GENERAL SHEET NOTES

- CONTRACTOR SHALL COORDINATE ALL DEMOLITION WORK WITH THE ARCHITECT AND THE COLLEGE PRIOR TO COMMENCEMENT OF WORK.
- DEMOLISH EXISTING FIRE ALARM DEVICES AS REQUIRED TO ACCOMMODATE NEW CONSTRUCTION. DEMOLITION WORK SHALL BE COORDINATED AND SEQUENCED WITH THE PROVISIONS OF ALL DIVISIONS OF CONSTRUCTION DOCUMENTS.
- REMOVE ALL EXISTING MATERIALS CONFLICTING WITH REMODEL WORK INDICATED IN CONSTRUCTION DOCUMENTS AND SUBJECT TO THE CONDITIONS INDICATED IN SUCH.
- REMOVE ALL ELECTRICAL MATERIALS MOUNTED IN OR ON WALLS AND CEILING TO BE REMOVED AS INDICATED IN THE ARCHITECTURAL CONSTRUCTION DOCUMENTS.
- VERIFY EXISTING CONDITIONS PRIOR TO PROCEEDING WITH THE WORK, AND PROVIDE ADDITIONAL SPLICE BOXES, ETC., AS REQUIRED FOR A COMPLETE AND PROPERLY OPERATING SYSTEM. EXISTING CONDUIT THAT IS NOT REMOVED DURING DEMOLITION MAY BE REUSED IN PLACE IF IT IS SIZED IN ACCORDANCE WITH THE LATEST EDITION OF THE N.E.C. AND THOROUGHLY CLEANED AND SWABBED PRIOR TO PULLING NEW WIRES.
- CONTRACTOR TO OBTAIN COPY OF EXISTING AS-BUILT DRAWINGS PRIOR TO BID.
- WHERE DRAWINGS INDICATE EXISTING FIRE ALARM EQUIPMENT OR DEVICES TO BE RELOCATED OR REUSED, REFURBISH THEM. CLEAN SUCH ITEMS AND NOTIFY ARCHITECT OF ANY DEFECTS IN SUCH INSTALLATIONS. REPAIR ANY DAMAGE CAUSED BY DEMOLITION OR CONSTRUCTION PERFORMED UNDER THIS CONTRACT.

SHEET KEYNOTES

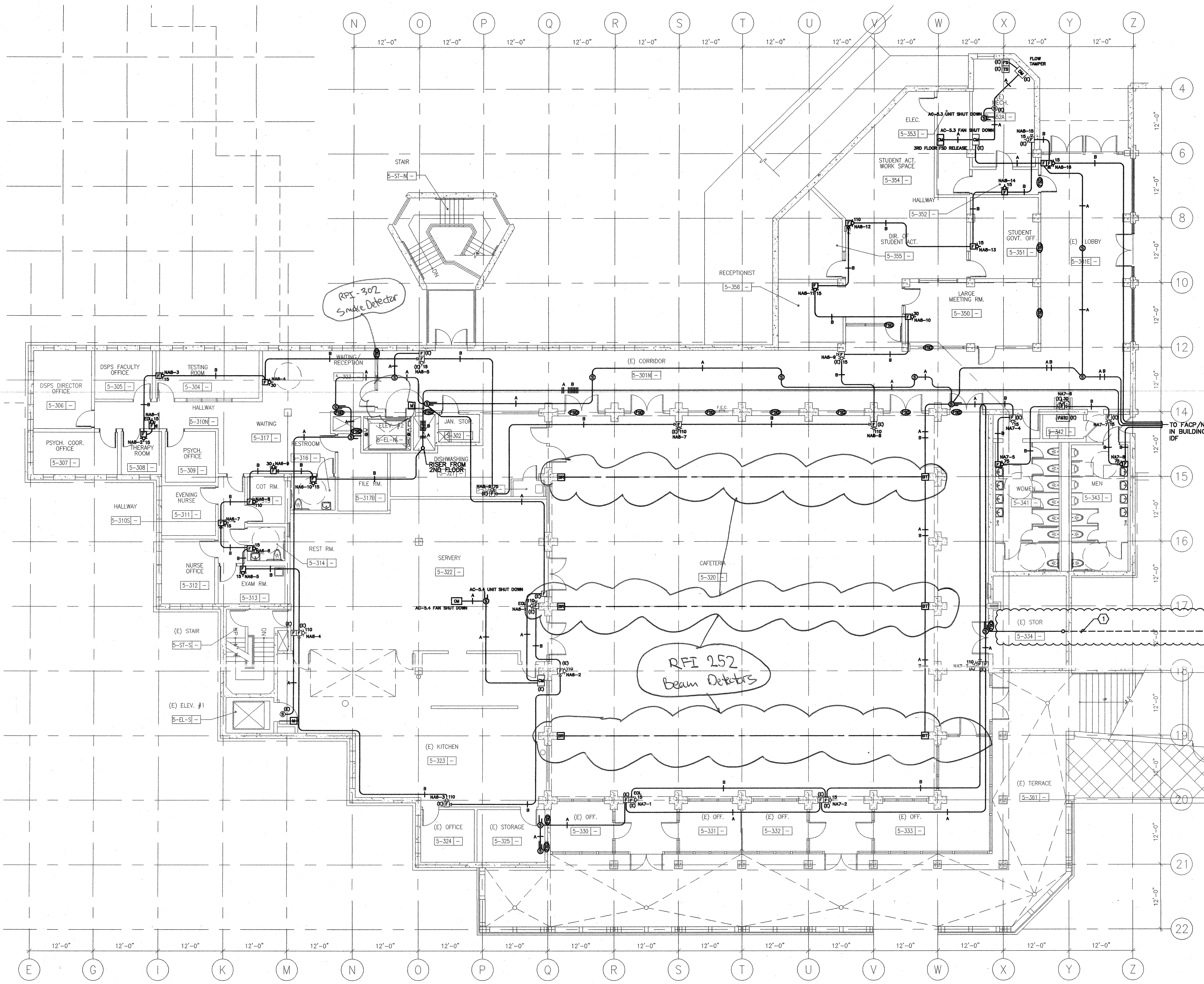
- PROVIDE 1" CONDUIT WITH 16 AWG 1 PAIR TWISTED AND SHIELDED FIRE ALARM CABLE SUITABLE FOR WET LOCATION, SUCH AS WEST PENN AQUASEAL.

RFI-21
DEVICES REMOVED & DEMO

RFI - 233
Door Holder Coord
w/ FA'S HOUR

RFI 252
Beam Detectors

RFI-302
Smoke Detector



1 FIRE ALARM PLAN - THIRD FLOOR
SCALE: 1/8"=1'-0"