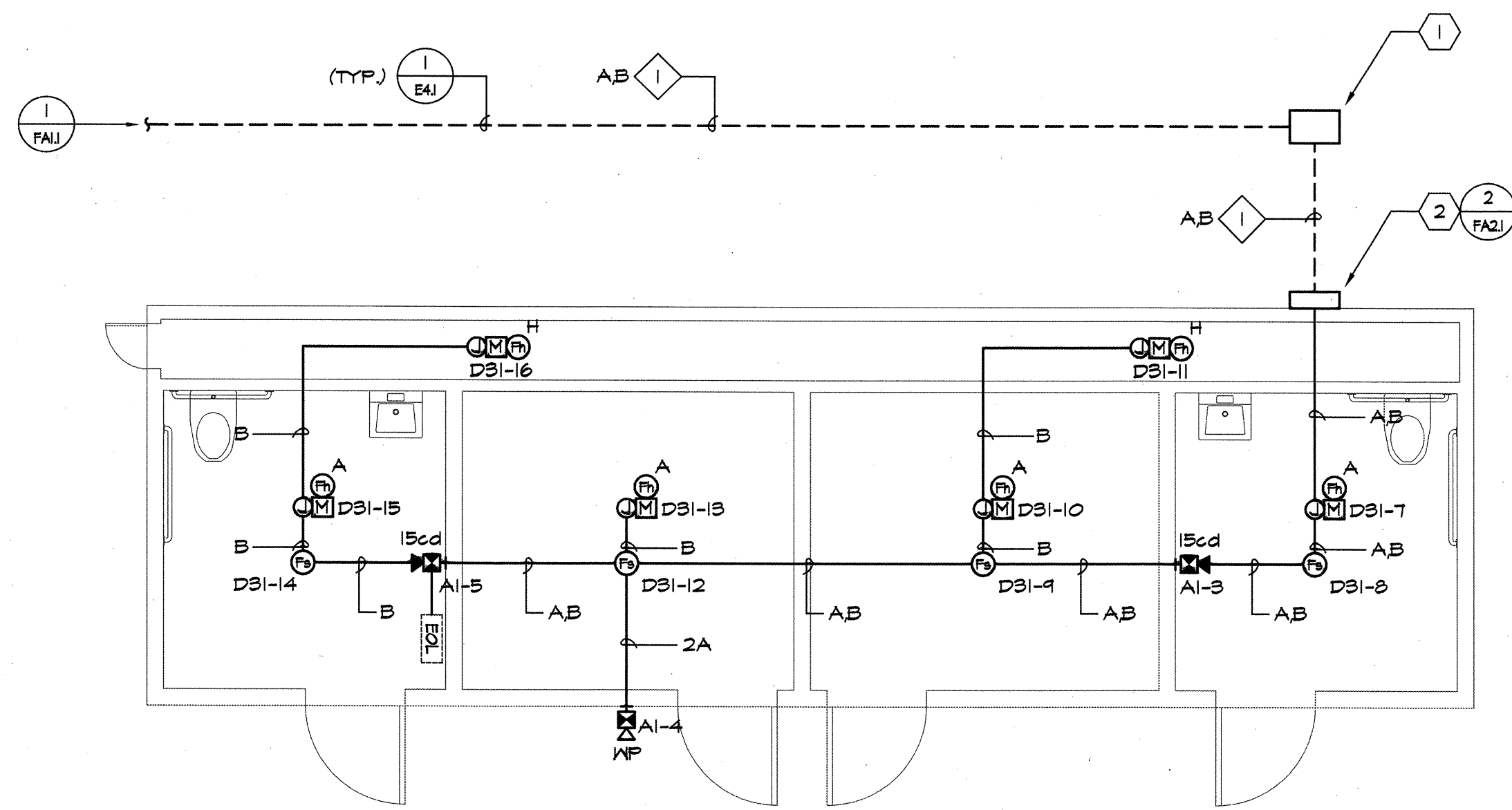


ALL IDEAS, DESIGNS, ARRANGEMENTS, AND PLANS INDICATED OR REPRESENTED BY THIS DRAWING ARE OWNED BY AND THE PROPERTY OF VERDE DESIGN, INC. AND WERE CREATED, EVALUATED, AND DEVELOPED FOR USE ON AND IN CONNECTION WITH THE SPECIFIED PROJECT. NONE OF SUCH IDEAS, DESIGNS, ARRANGEMENTS OR PLANS SHALL BE USED, REPRODUCED, OR PUBLISHED BY ANY METHOD, IN WHOLE OR IN PART, OR DISCLOSED TO ANY PERSON, FIRM, OR CORPORATION FOR ANY PURPOSE WHATSOEVER WITHOUT WRITTEN PERMISSION OF VERDE DESIGN, INC.



GENERAL NOTES:

- SEE RISER DIAGRAM FOR ADDITIONAL REQUIREMENTS.
- ALL CABLES AND CONDUITS/SURFACE RACEMAYS SHALL BE NEW UNLESS OTHERWISE NOTED.
- PROVIDE SMOKE DETECTOR GUARDS. SEE FIRE ALARM SPECIFICATIONS FOR ADDITIONAL REQUIREMENTS.
- FIRE ALARM CONDUIT SHALL BE PAINTED RED.

SHEET NOTES:

- NEW #1 IN-GRADE FIRE ALARM PULLBOX TO BE PROVIDED AND INSTALLED BY CONTRACTOR. LABEL LID "FIRE ALARM".
- NEW PULLCAN. CONTRACTOR SHALL SIZE PER NEC.

CONDUIT SCHEDULE:

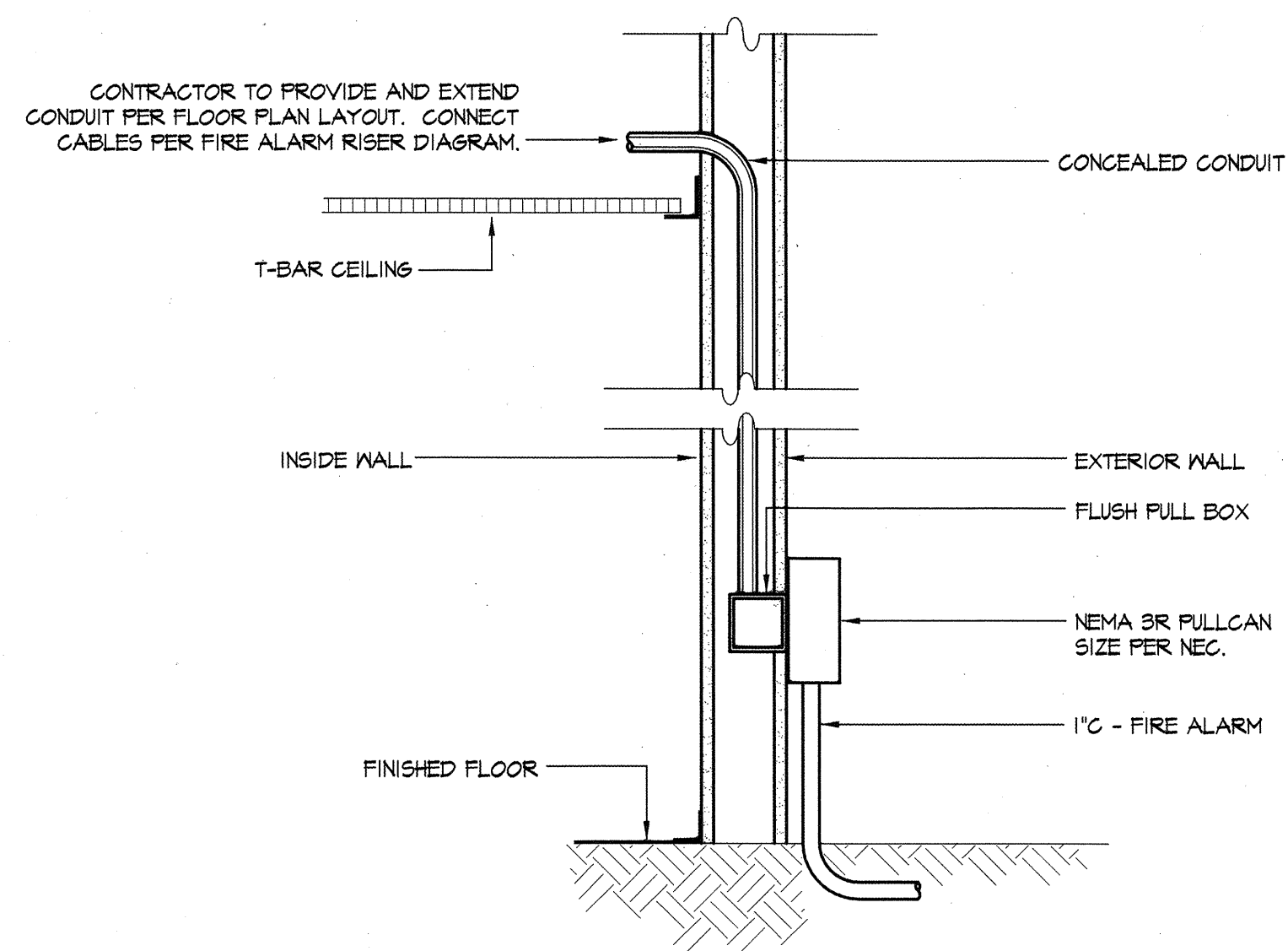
- (N) (1) 1" - FIRE ALARM

FA CABLE SCHEDULE:

- A - (2) #12 FOR NOTIFICATION APPLIANCE CIRCUITS (NAC)
- B - (1) #14 SHEILDLED TWISTED PAIR FOR SIGNALING LINE CIRCUITS (SLC)

1 FIRE ALARM FLOOR PLAN

FA2.1 SCALE: 1/4" = 1'-0"



2 CONDUIT/PULLCAN DETAIL

FA2.1 NOT TO SCALE

VERDE DESIGN
 LANDSCAPE ARCHITECTURE
 CIVIL ENGINEERING
 SPORT PLANNING & DESIGN

2455 The Alameda
 Santa Clara, CA 95050
 tel: 408.985.7200
 fax: 408.985.7260
 www.VerdeDesignInc.com

STAMP

CONSULTANT

American Consulting Engineers Electrical, Inc.

1500 The Alameda, Suite 200
 San Jose, CA 95128
 Tel: 408/238-2312
 Fax: 408/238-2318
 JOB #E12249.00

SHEET TITLE
FIRE ALARM FLOOR PLAN

PROJECT NAME
CANADA COLLEGE TENNIS FACILITY IMPROVEMENTS

PROJECT ADDRESS
**4200 FARM HILL BLVD
 REDWOOD CITY, CA 94061**

SUBMITTAL	DATE
90%	07/30/12
BID SUBMITTAL	08/21/12
ADDENDUM ONE	08/31/12
CONFORM. SET	09/24/12

NO.	REVISIONS	DATE

DRAWN BY MM	CHECKED BY SF
DATE ISSUED 08/21/12	SCALE AS NOTED
PROJ. NO. 1207300-1281	
SHEET NO. FA2.1	