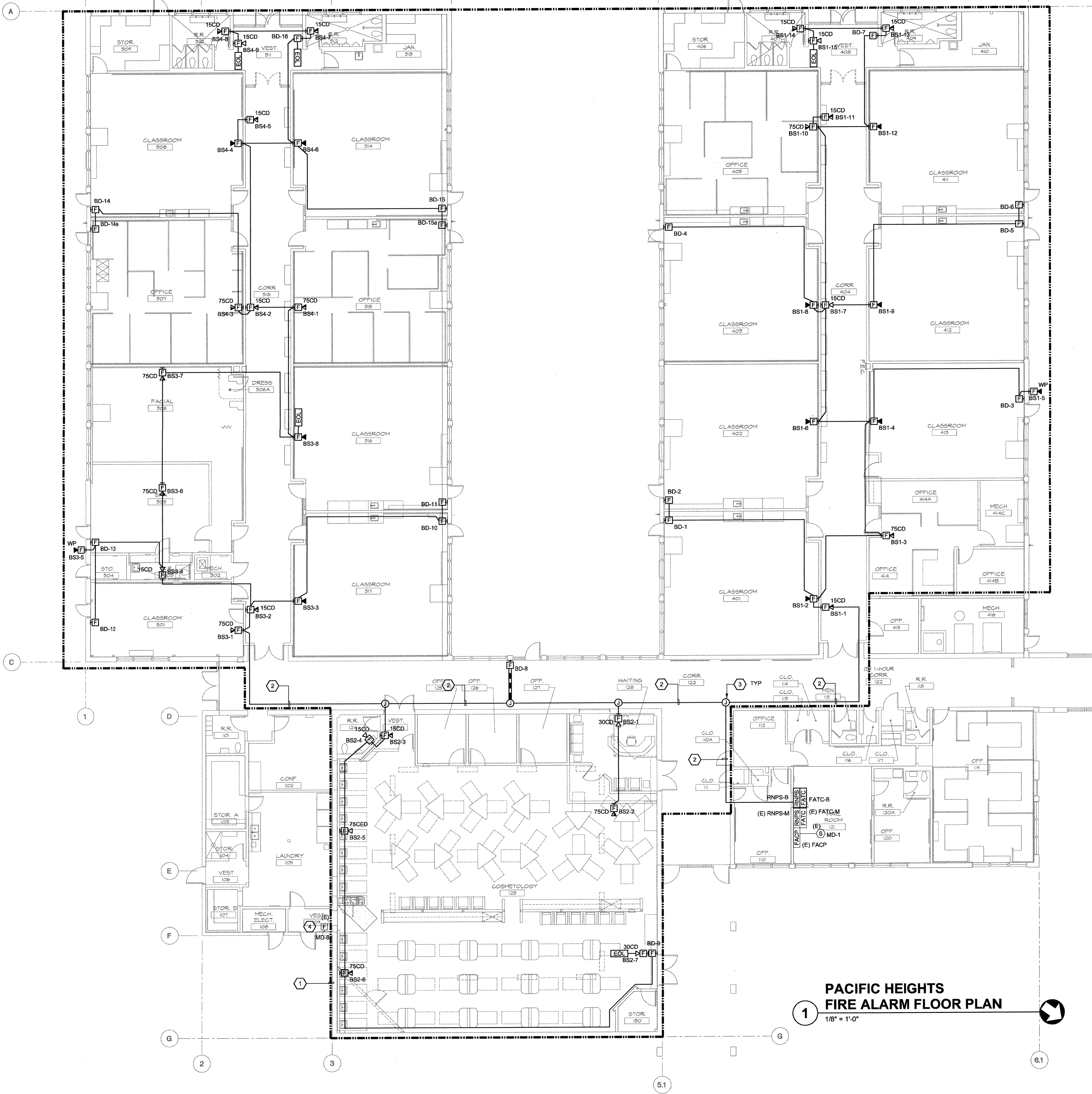


FILE LOCATION: P:\2163\00210\permit\p16\3\CAD\MECH\SKYLINE PK#3 CONFORM SET\Elec\03054\F20.dwg
 LAST SAVED ON: 9/19/04 at 4:14pm, PLOTTED ON: 9/13/04 at 2:10pm



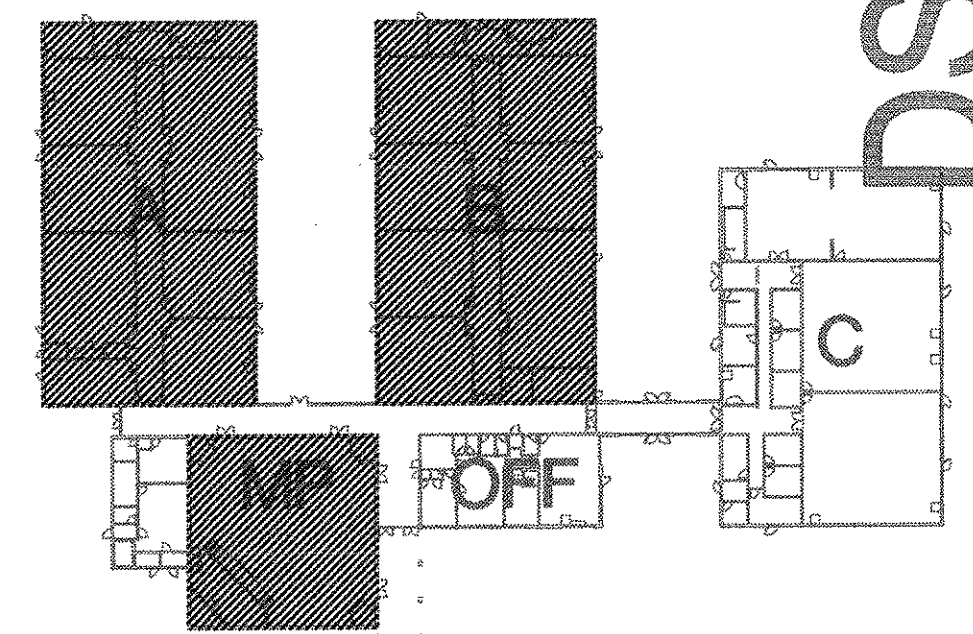
- ### GENERAL NOTES
- CONNECT REMOTE NOTIFICATION POWER SUPPLIES TO FIRE ALARM CONTROL PANEL WITH TWO (2) #12 AWG, UNLESS OTHERWISE NOTED.
 - ALL DETECTION CIRCUITS SHALL USE TWO (2) #14 AWG, UNLESS OTHERWISE NOTED. SEE VOLTAGE DROP CALCULATIONS FOR NOTIFICATION CIRCUIT CABLE QUANTITY AND SIZE.
 - CONCEAL ALL CONDUIT, UNLESS OTHERWISE NOTED. FOR NON-ACCESSIBLE LOCATIONS, USE WIREMOLD V700 SERIES SURFACED MOUNTED RACEWAYS.
 - ALL INTERIOR FIRE ALARM CONDUIT SHALL BE 3/4", UNLESS OTHERWISE NOTED.
 - SEE DETAILS FOR MOUNTING REQUIREMENTS OF FIRE ALARM DEVICES.
 - THERE SHALL BE NO ROOF PENETRATIONS WITHIN 5'-0" OF FIRE RATED OR AREA SEPARATION WALLS. VERIFY EXACT LOCATIONS OF THESE WALLS WITH ARCHITECTURAL DRAWINGS.
 - MAINTAIN ALL SPACING AND PENETRATION REQUIREMENTS THROUGH FIRE RATED OR AREA SEPARATION WALLS, PER CBC 709. VERIFY EXACT LOCATIONS OF THESE WALLS WITH ARCHITECTURAL DRAWINGS.

- ### SHEET NOTES
- AREA OF WORK.
 - RUN FIRE ALARM CONDUIT IN (E) METAL RACEWAY.
 - MOUNT J-BOX UNDERNEATH OF (E) METAL RACEWAY.
 - OUTSIDE OF WORK AREA, REFER TO PERMIT PACKAGE #2 WITH DSA APPLICATION #01-105916.

As-Built Notes
 See Architects Supplemental Instructions
 H's 2.3 for the extent of the FA work

*Tested fire alarm system + new Camwell panel
 11/19/04 OK [Signature]*

KEY PLAN



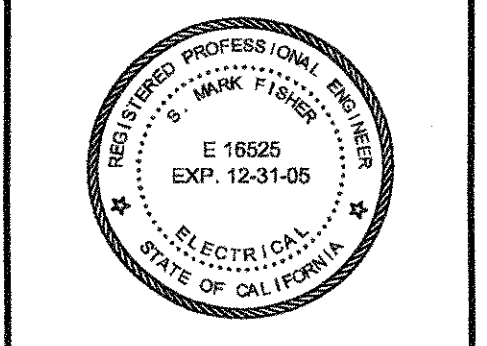
**PACIFIC HEIGHTS
 FIRE ALARM FLOOR PLAN**
 1/8" = 1'-0"

DSA SUBMITTAL - 02.13.04

Sugimura & Associates Architects
 Architecture • Interiors
 Landscape Architecture
 2155 South Bascom Ave., Suite 200
 Campbell, CA 95008
 408-879-0600 Fx 408-377-6066
 COPYRIGHT © 2001 Sugimura & Associates/Architects

IPDAAS
 INTEGRATED DESIGN ASSOCIATES INC.
 CONSULTING ELECTRICAL ENGINEERS
 3001 Central Expressway, Suite 200
 San Jose, California 95128
 Tel: (408) 261-1000 Fax: (408) 261-1001

REGISTRATION BOARD
 DIV. OF THE STATE ARCHITECT
 OFFICE OF REGULATION SERVICES
 APP. NO. _____
 DATE _____
 FILE NO. _____
 DATE _____
 Division of the State Architect
 2915 Clay St., Suite 3007
 Oakland, CA 94612



**PACIFIC HEIGHTS
 FIRE ALARM FLOOR PLAN**
 SKYLINE COLLEGE SWING SPACE
 PERMIT PACKAGE #3
 SKYLINE COLLEGE
 3300 COLLEGE DRIVE
 SAN BRUNO, CA. 94066

REVISIONS

NO.	ITEM	DATE
3	As-Built Notes	3/14/05

CLIENT APPROVAL:
 DRAWN BY: RCS
 CHECKED BY: SMF
 JOB NO: 2163.002
 DATE: 5 FEB. 2004

F20
 OF 5 SHEETS