

Client
San Mateo Community College District

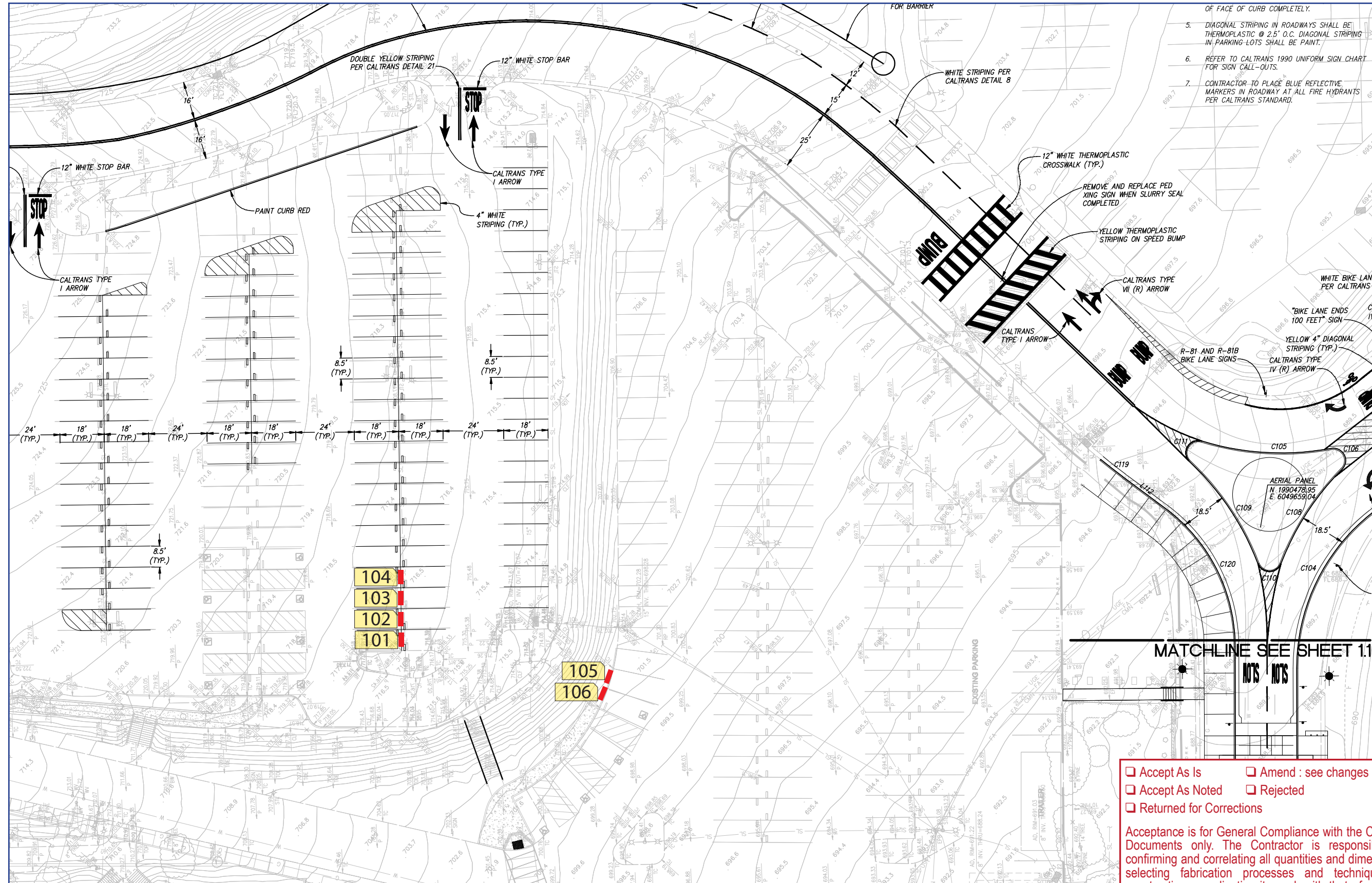
Project Location
San Mateo, CA

Project
Electronic Vehicle Charging Station Signage

Package Type
Sign Design Concepts/ Location Plan/Drawing Package

SLA Job Number
13.1502 / V05

Date
05.07.2013



- 5. DIAGONAL STRIPING IN ROADWAYS SHALL BE THERMOPLASTIC @ 2.5' O.C. DIAGONAL STRIPING IN PARKING LOTS SHALL BE PAINT.
- 6. REFER TO CALTRANS 1990 UNIFORM SIGN CHART FOR SIGN CALL-OUTS.
- 7. CONTRACTOR TO PLACE BLUE REFLECTIVE MARKERS IN ROADWAY AT ALL FIRE HYDRANTS PER CALTRANS STANDARD.

MATCHLINE SEE SHEET 1.1

- Accept As Is
- Amend : see changes marked
- Accept As Noted
- Rejected
- Returned for Corrections

Acceptance is for General Compliance with the Contract Documents only. The Contractor is responsible for confirming and correlating all quantities and dimensions; selecting fabrication processes and techniques of construction; coordinating its work with that of all other trades; and performing its work in a safe and satisfactory manner.

By _____
Date _____

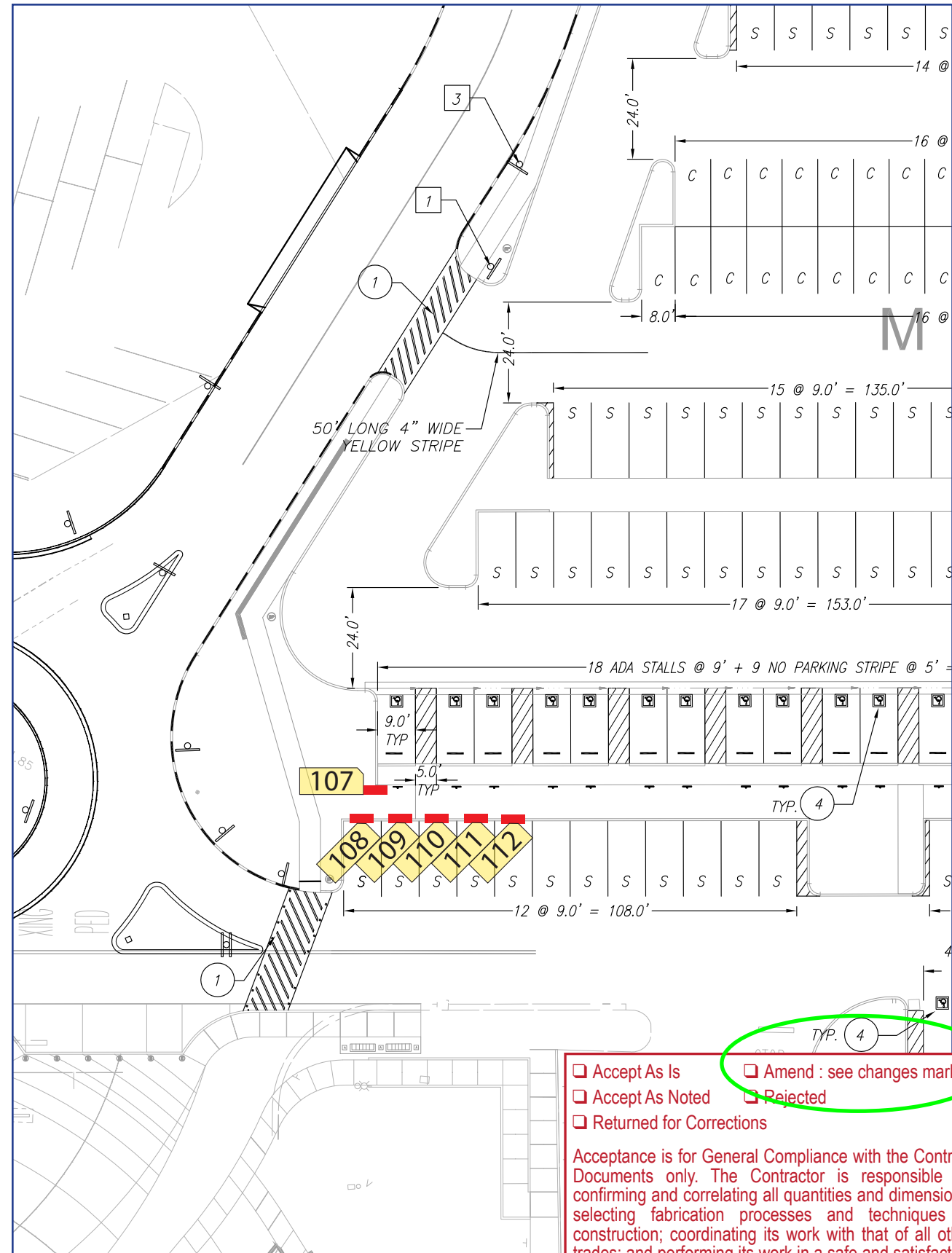


Wayfinding and Sign Consultants
697 Juana Avenue
San Leandro, CA 94577
510.969.7870
info@shannon-leigh.net

All drawings and written material appearing herein constitute the original and unpublished work of Shannon-Leigh Associates and may not be used without prior written consent of Shannon-Leigh Associates. ©2013 Shannon-Leigh Associates.

All measurements including pole depths and mounting heights are recommended only. All dimensions and measurements are to be approved by the Architect of Record prior to any manufacturing of installation of these designs.

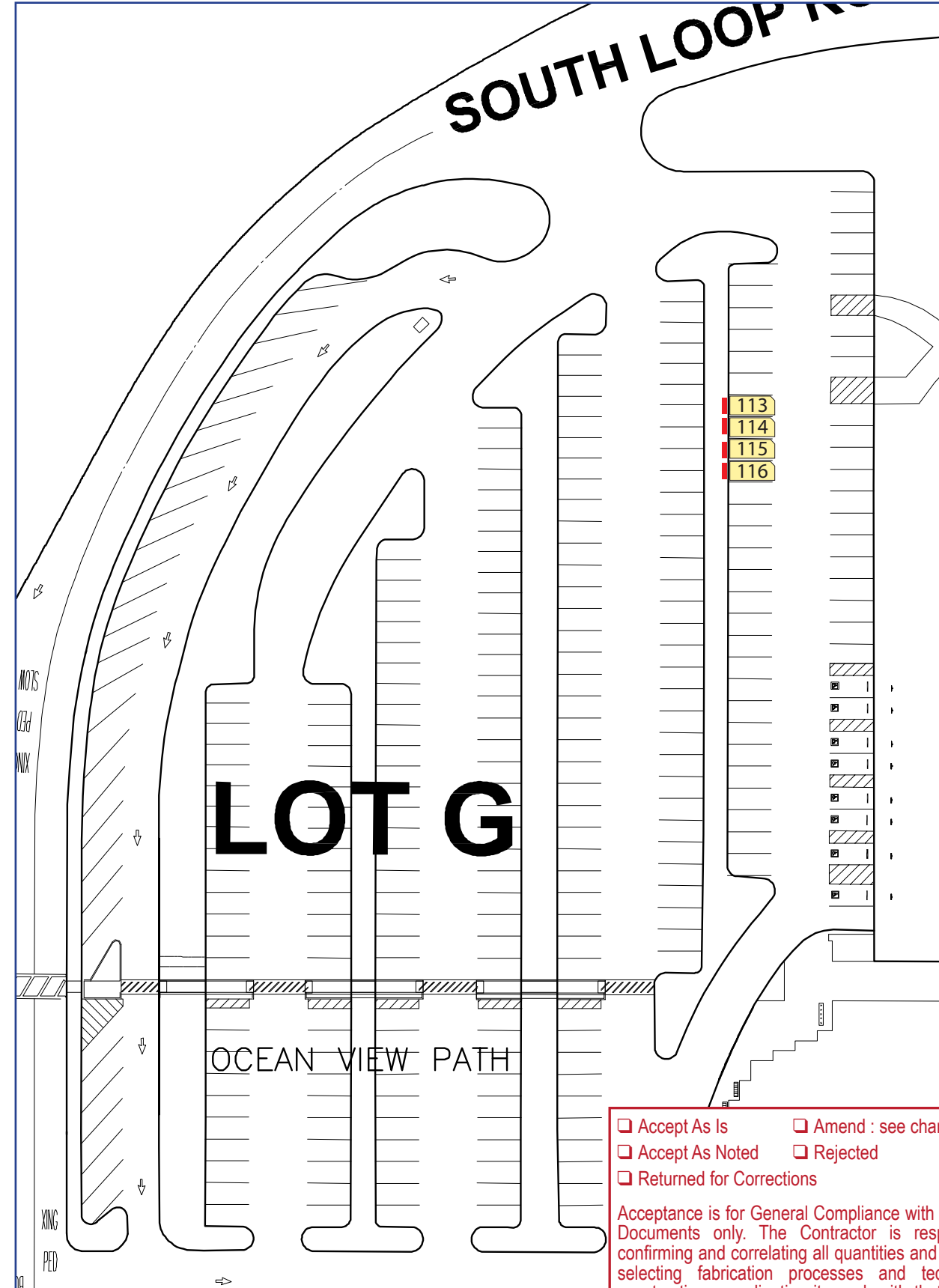
Drawings are for design intent only. Drawings are not intended for construction. Items are at scale noted when this page is 17" x 11".



- Accept As Is
- Amend : see changes marked
- Accept As Noted
- Rejected
- Returned for Corrections

Acceptance is for General Compliance with the Contract Documents only. The Contractor is responsible for confirming and correlating all quantities and dimensions; selecting fabrication processes and techniques of construction; coordinating its work with that of all other trades; and performing its work in a safe and satisfactory manner.

By _____
Date _____



- Accept As Is
- Amend : see changes marked
- Accept As Noted
- Rejected
- Returned for Corrections

Acceptance is for General Compliance with the Contract Documents only. The Contractor is responsible for confirming and correlating all quantities and dimensions; selecting fabrication processes and techniques of construction; coordinating its work with that of all other trades; and performing its work in a safe and satisfactory manner.

By _____
Date _____

Client
San Mateo Community College District

Project Location
San Mateo, CA

Project
Electronic Vehicle Charging Station Signage

Package Type
Sign Design Concepts/ Location Plan/Drawing Package

SLA Job Number
13.1502 / V05

Date
05.07.2013

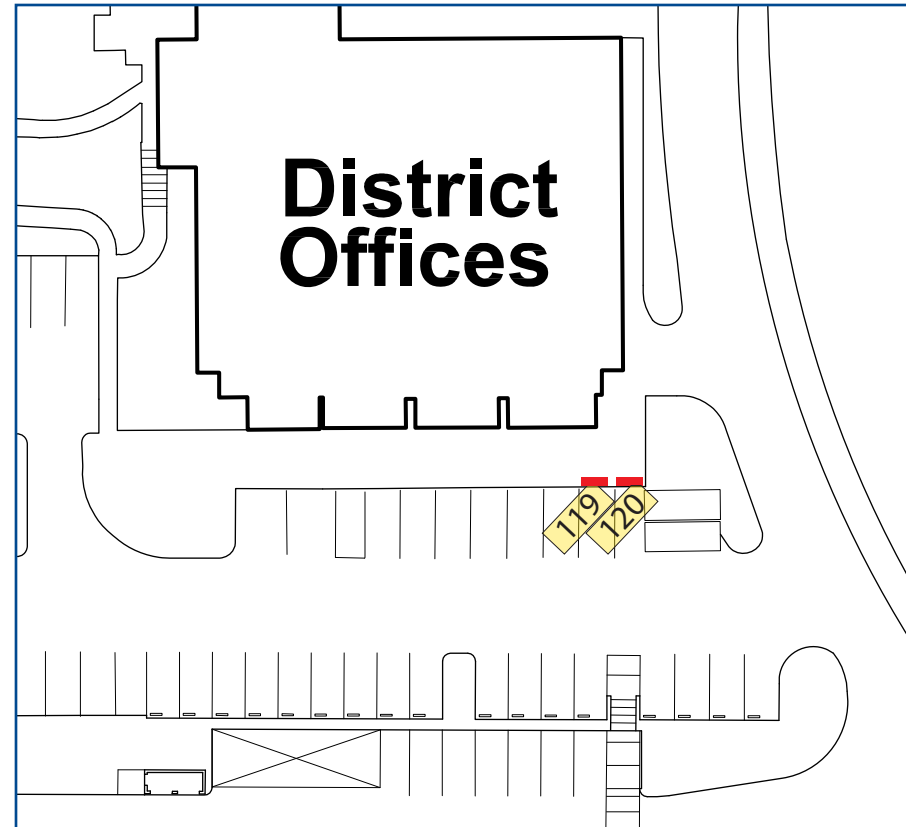


697 Juana Avenue
San Leandro, CA 94577
510.969.7870
info@shannon-leigh.net

All drawings and written material appearing herein constitute the original and unpublished work of Shannon-Leigh Associates and may not be used without prior written consent of Shannon-Leigh Associates. ©2013 Shannon-Leigh Associates.

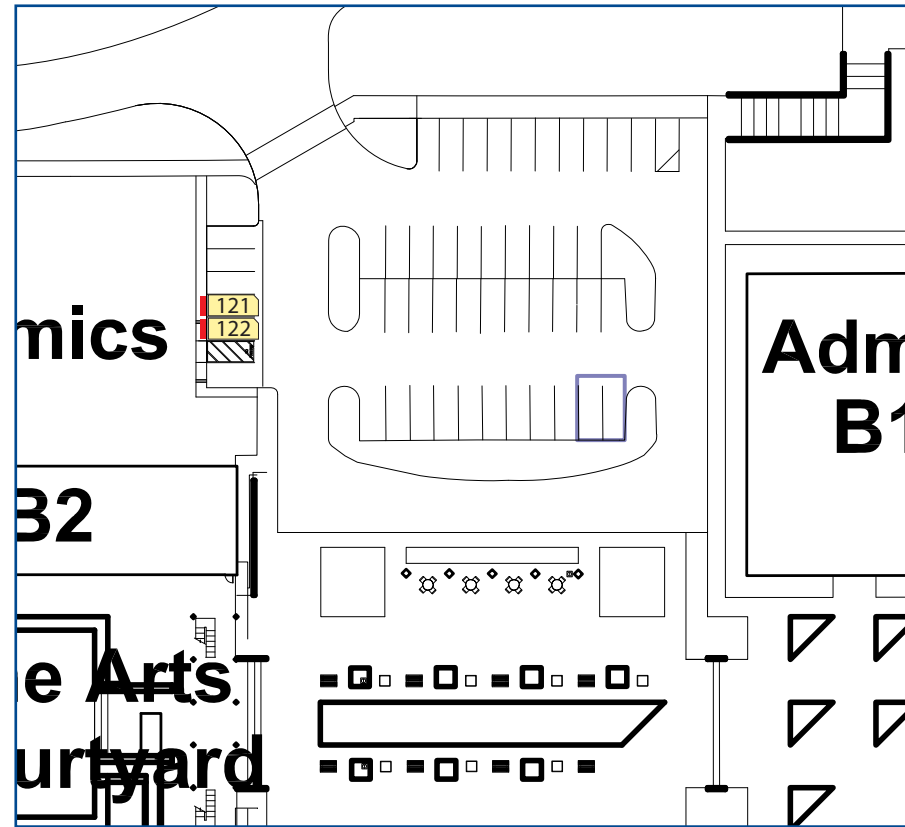
All measurements including pole depths and mounting heights are recommended only. All dimensions and measurements are to be approved by the Architect of Record prior to any manufacturing of installation of these designs.

Drawings are for design intent only. Drawings are not intended for construction. Items are at scale noted when this page is 17" x 11".



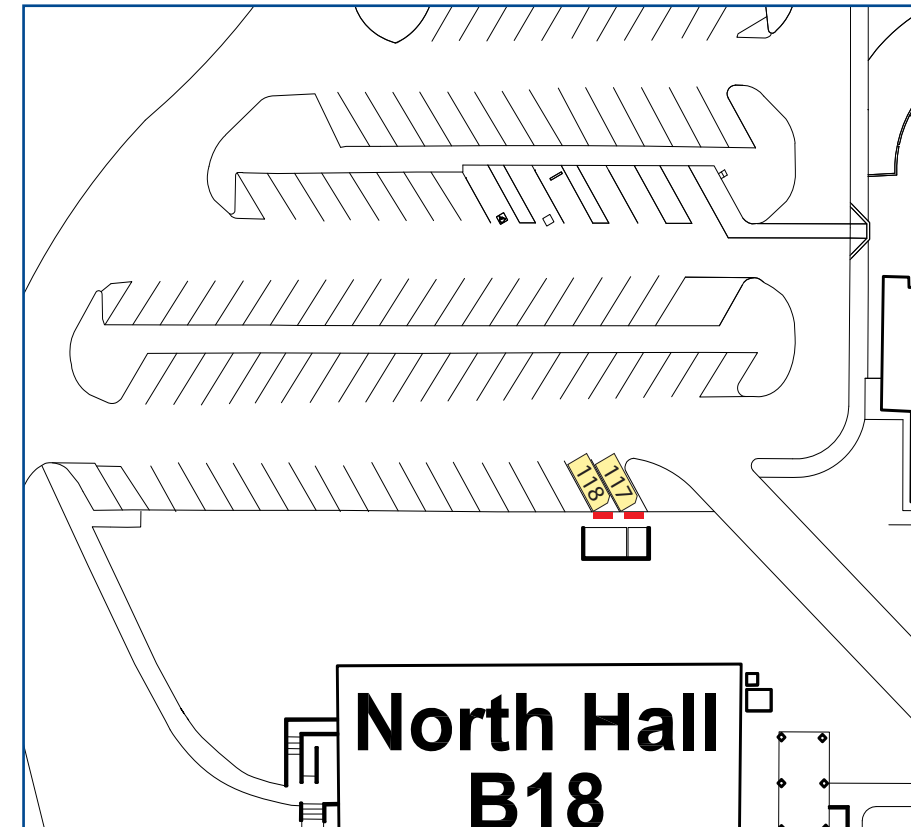
Accept As Is Amend : see changes marked
 Accept As Noted Rejected
 Returned for Corrections

Acceptance is for General Compliance with the Contract Documents only. The Contractor is responsible for confirming and correlating all quantities and dimensions; selecting fabrication processes and techniques of construction; coordinating its work with that of all other trades; and performing its work in a safe and satisfactory manner.
 By _____
 Date _____



Accept As Is Amend : see changes marked
 Accept As Noted Rejected
 Returned for Corrections

Acceptance is for General Compliance with the Contract Documents only. The Contractor is responsible for confirming and correlating all quantities and dimensions; selecting fabrication processes and techniques of construction; coordinating its work with that of all other trades; and performing its work in a safe and satisfactory manner.
 By _____
 Date _____



Accept As Is Amend : see changes marked
 Accept As Noted Rejected
 Returned for Corrections

Acceptance is for General Compliance with the Contract Documents only. The Contractor is responsible for confirming and correlating all quantities and dimensions; selecting fabrication processes and techniques of construction; coordinating its work with that of all other trades; and performing its work in a safe and satisfactory manner.
 By _____
 Date _____

Client
 San Mateo Community College District

Project Location
 San Mateo, CA

Project
 Electronic Vehicle Charging Station Signage

Package Type
 Sign Design Concepts/ Location Plan/Drawing Package

SLA Job Number
 13.1502 / V05

Date
 05.07.2013



SHANNON-LEIGH ASSOCIATES
 Wayfinding and Sign Consultants

697 Juana Avenue
 San Leandro, CA 94577
 510.969.7870

info@shannon-leigh.net

All drawings and written material appearing herein constitute the original and unpublished work of Shannon-Leigh Associates and may not be used without prior written consent of Shannon-Leigh Associates. ©2013 Shannon-Leigh Associates.

All measurements including pole depths and mounting heights are recommended only. All dimensions and measurements are to be approved by the Architect of Record prior to any manufacturing of installation of these designs.

Drawings are for design intent only. Drawings are not intended for construction. Items are at scale noted when this page is 17" x 11".