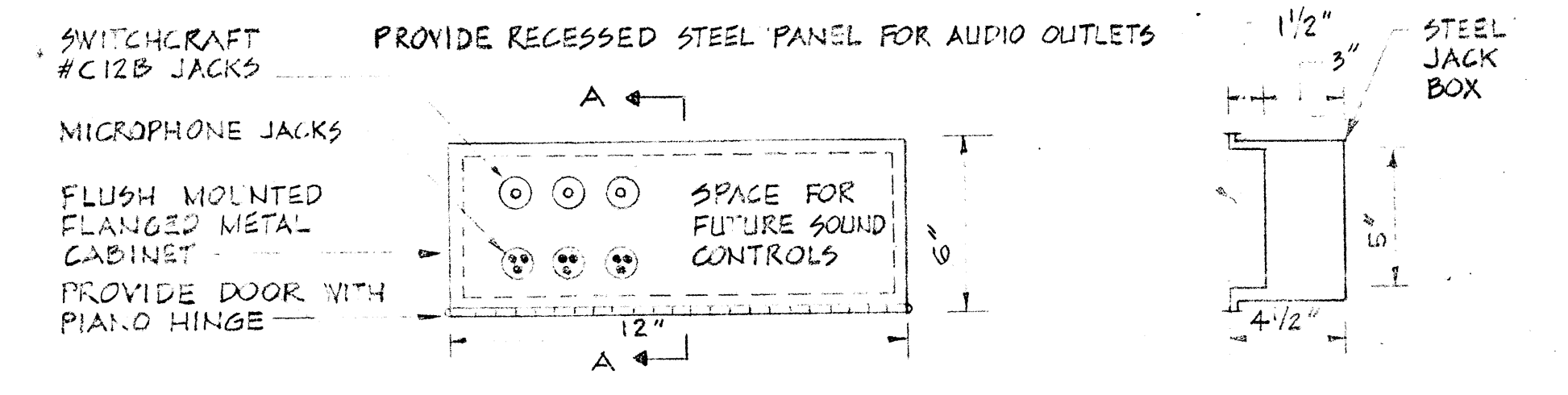
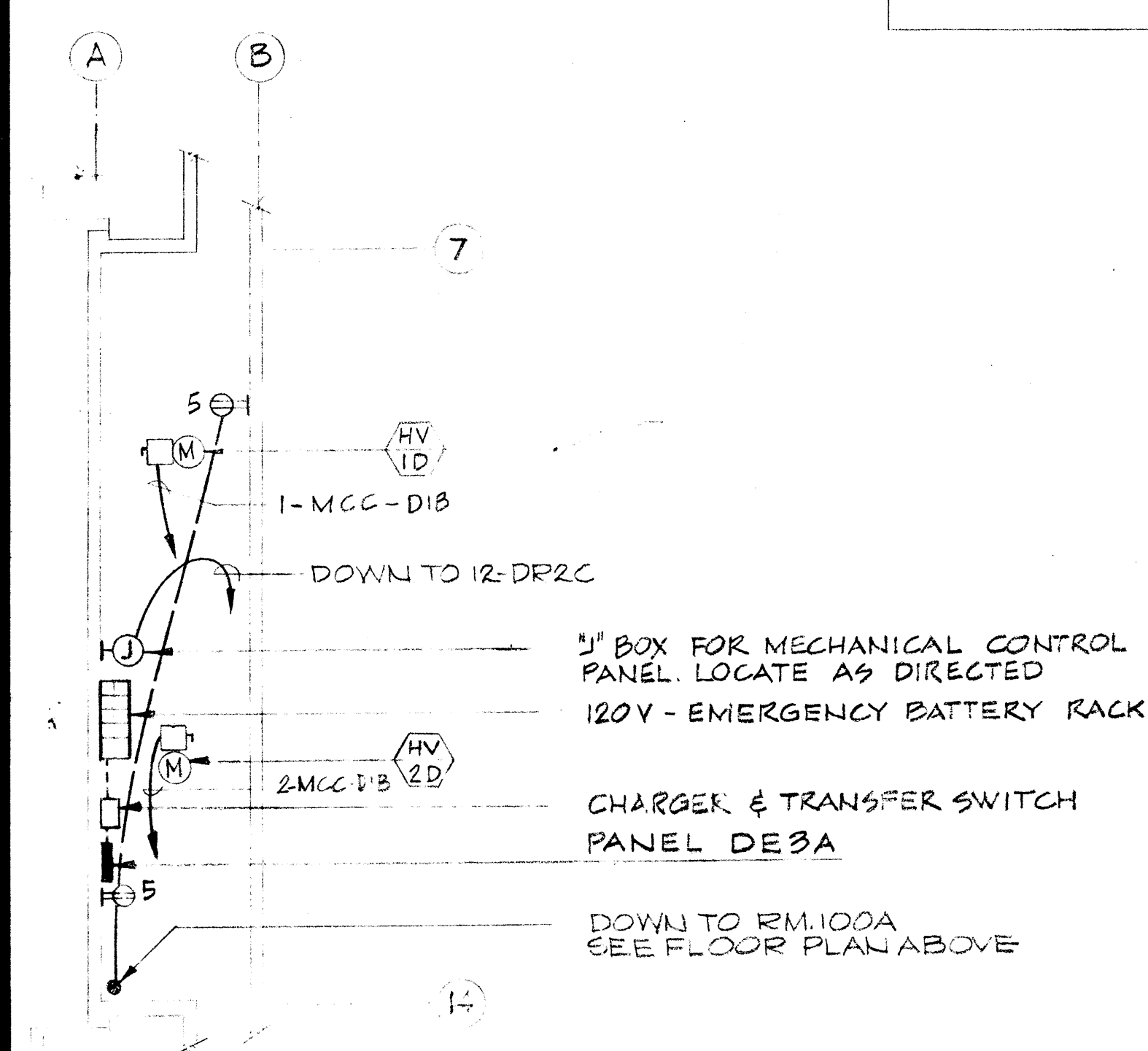
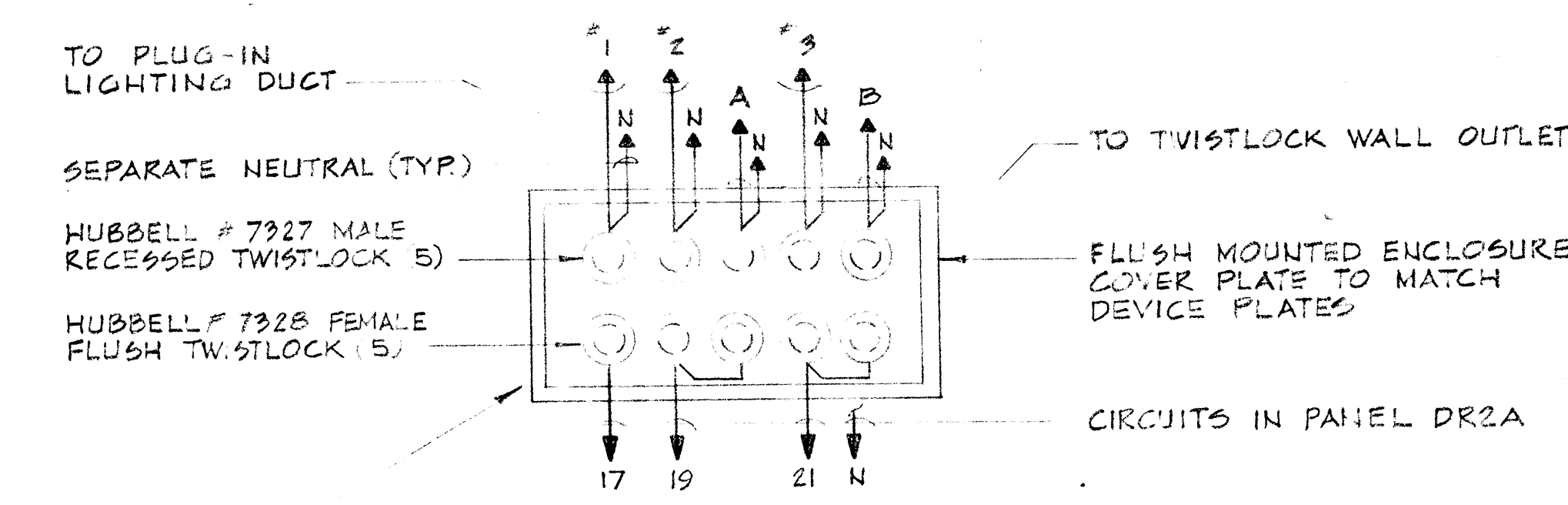


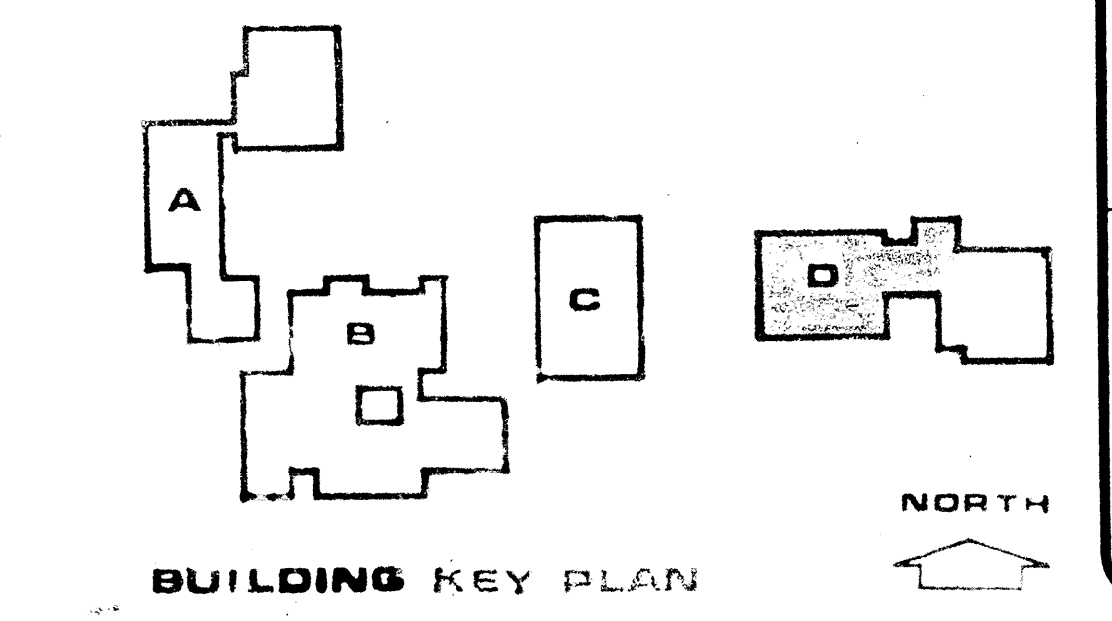
MISCELLANEOUS SYSTEMS  
2ND LEVEL FLOOR PLAN  
SCALE 1/8" = 1'-0"



FRONT VIEW SECTION A-A  
MULTI-OUTLET BOX - DETAIL A  
NO SCALE



NOTE: ← PROVIDE 5 CORDS 18' LONG WITH MATCHING END CAPS FOR CROSS-CONNECTION WHEN NOT USING DIMMER. (DIMMER, N.T.C.)  
DIMMER PLUG-IN BOX - DETAIL B  
NO SCALE



NOTES:  
1 SEE NOTES 1 TO 3 ON SHEET E-01  
2 COORDINATE SCOREBOARD OUTLET LOCATIONS W/MANUFACTURER.  
3 OUTLETS FOR 1/4 HP MOTOR-OPERATED BACKSTOPS. SEE ARCHITECTURAL PLANS FOR EXACT LOCATION AND INSTALLATION DETAILS. CONTRACTOR SHALL INSTALL AND CONNECT UNITS FURNISHED BY OTHERS. SWITCHES SHALL BE KEY TYPE.

JOHN CARL WARNECKE P.E. A.I.A.  
**JOHN CARL WARNECKE AND ASSOCIATES**  
ARCHITECTS AND PLANNING CONSULTANTS  
611 NEW MONTGOMERY STREET SAN FRANCISCO

*John M. Mateo*  
REGISTERED PROFESSIONAL ELECTRICAL ENGINEER  
REGISTERED PROFESSIONAL MECHANICAL ENGINEER  
REGISTERED PROFESSIONAL MECHANICAL & ELECTRICAL ENGINEER  
REGISTERED PROFESSIONAL CIVIL ENGINEER  
SAN MATEO, CALIFORNIA

BUILDING D PHYSICAL EDUCATION  
ELECTRICAL - 2ND LEVEL PLAN - MISC.  
**COLLEGE OF SAN MATEO**  
SAN BRUNO CALIFORNIA

SCALE AS SHOWN	DATE	REVISION DESCRIPTION	NO.	DATE	APPROVED
JOB NO. 64-15	10/19/67				
D.B. A.V.P.A.					
CHECK BY P.E.S.					
SHEET NUMBER	1-104				
OF 5 SHEETS	REVISION NO.				