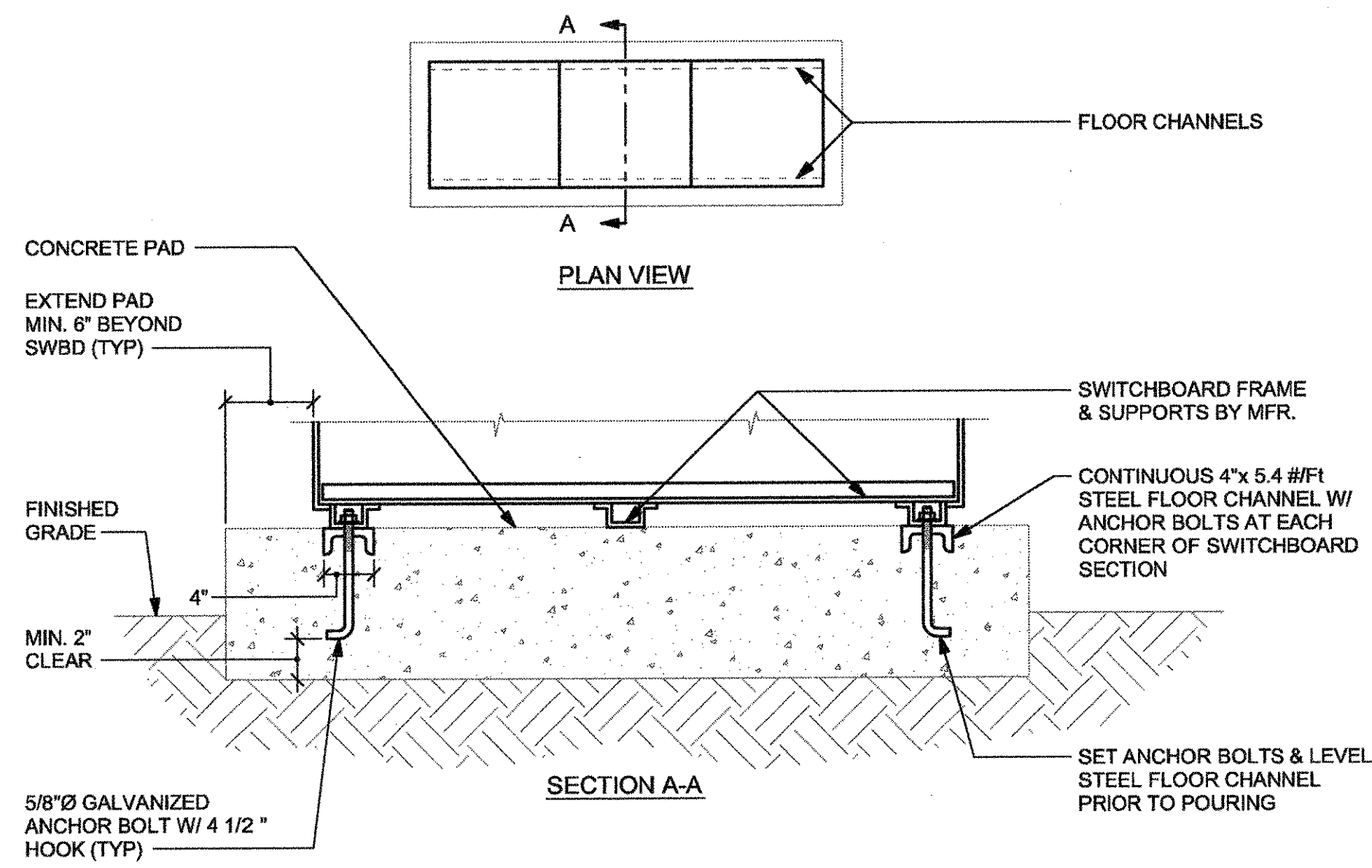


DETAIL NOTES

- FOR WOOD STUD WALL:
USE 3/8" LAG BOLT WITH MIN 2" EMBEDMENT INTO STUDS. (ONE AT EACH END OF BRACKET)
- FOR CONCRETE WALL:
USE 3/8" WEDGE ANCHOR WITH MIN 2-1/2" EMBEDMENT INTO CONCRETE WALL. (ONE AT EACH END OF BRACKET)

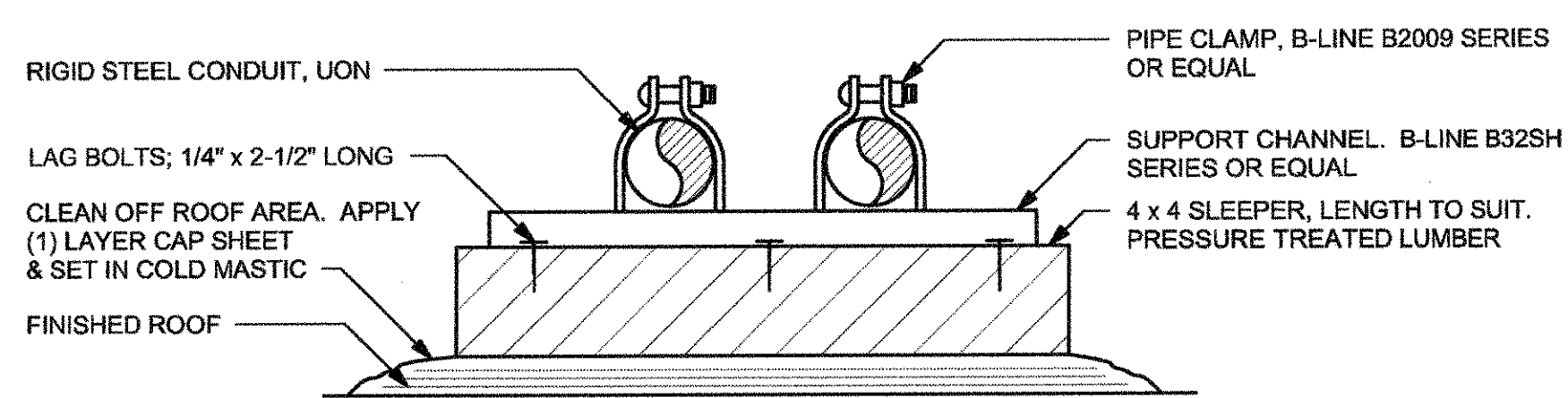
7 UNDERGROUND CONDUIT RISER

NOT TO SCALE



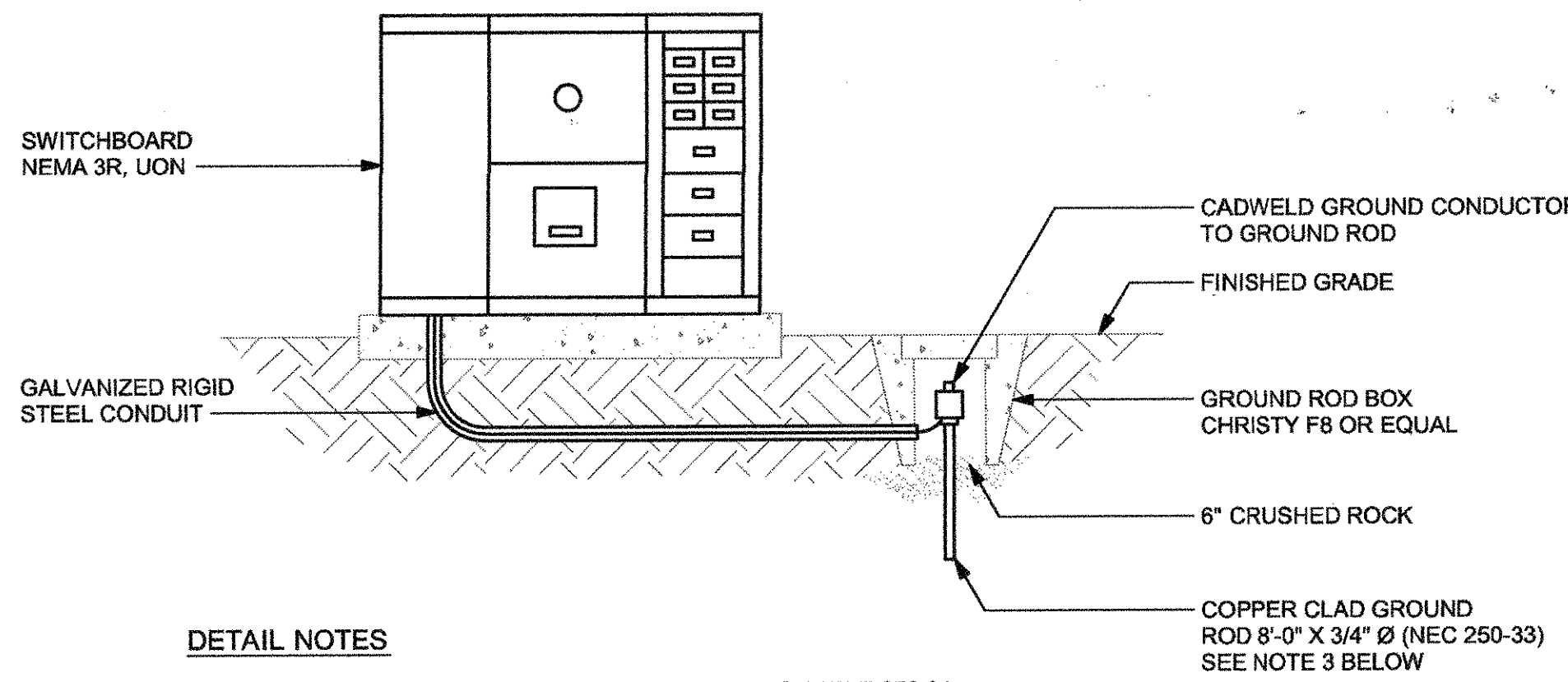
4 EXTERIOR SWITCHBOARD ANCHORAGE PAD

NOT TO SCALE



8 CONDUIT ON BLOCKING ON ROOF

NOT TO SCALE

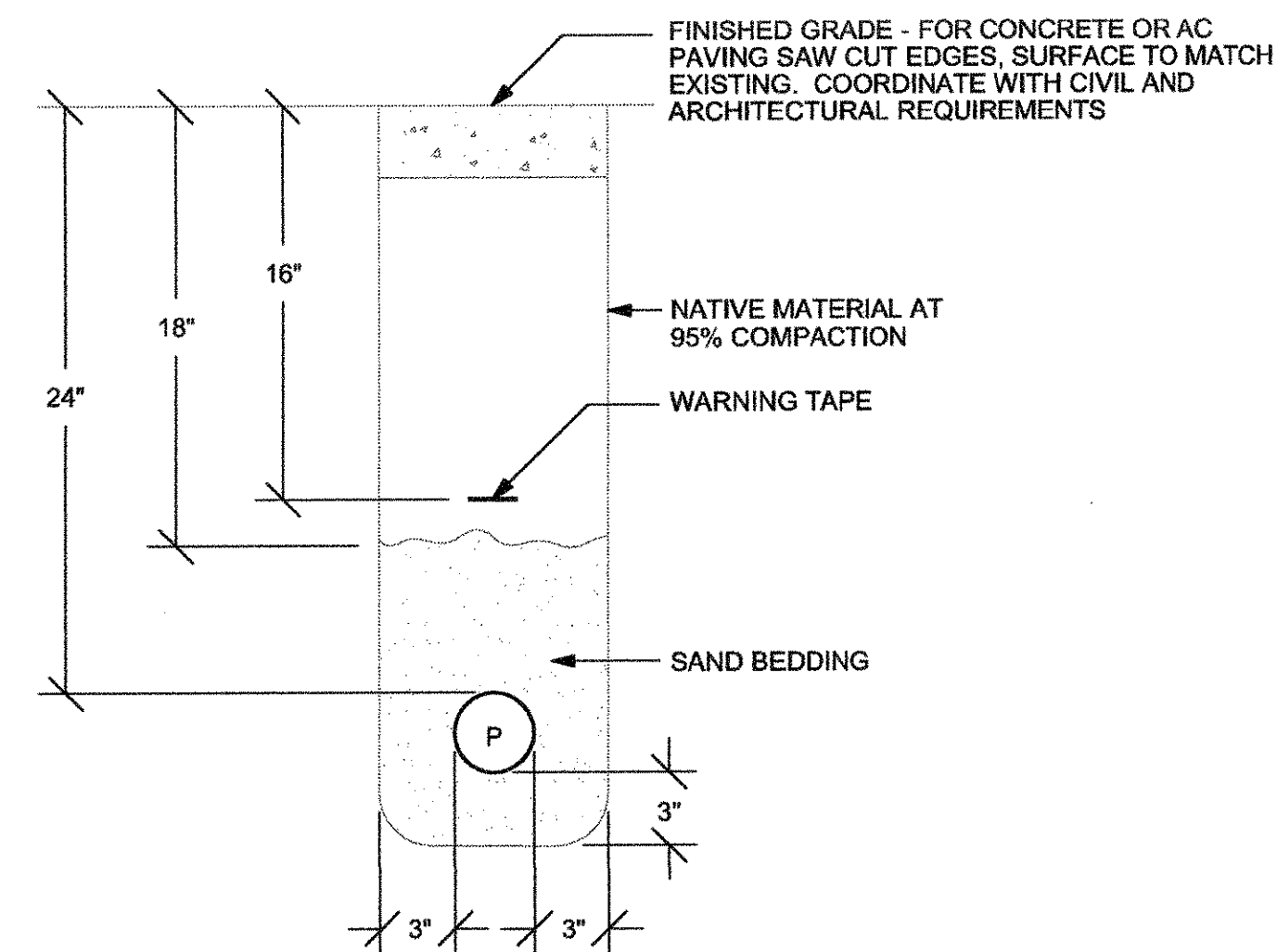


DETAIL NOTES

- SIZE OF CONDUCTORS SHALL COMPLY WITH NEC TABLE 250-94.
- BOND SEPARATE CONDUCTORS FROM GROUND ROD TO TRANSFORMER AND TO METAL BUILDING FRAME (NEC 250-81). IN ADDITION TO DETAIL ABOVE, BOND THE ELECTRICAL GROUND TO NEAREST METALLIC COLD WATER PIPE (NEC 250-81 & 250-83).
- CHECK RESISTANCE TO GROUND. IF RESISTANCE EXCEEDS 25 OHMS, INSTALL ADDITIONAL GROUND RODS AS REQUIRED. (NEC 250-84)
- GROUNDING TEST MUST BE BY INDEPENDENT LICENSED ELECTRICAL CONTRACTOR OR TESTING LABORATORY. PROJECT CONTRACTOR IS NOT ELIGIBLE TO RUN TEST.

5 EXTERIOR SWITCHBOARD GROUNDING

NOT TO SCALE



DETAIL NOTES

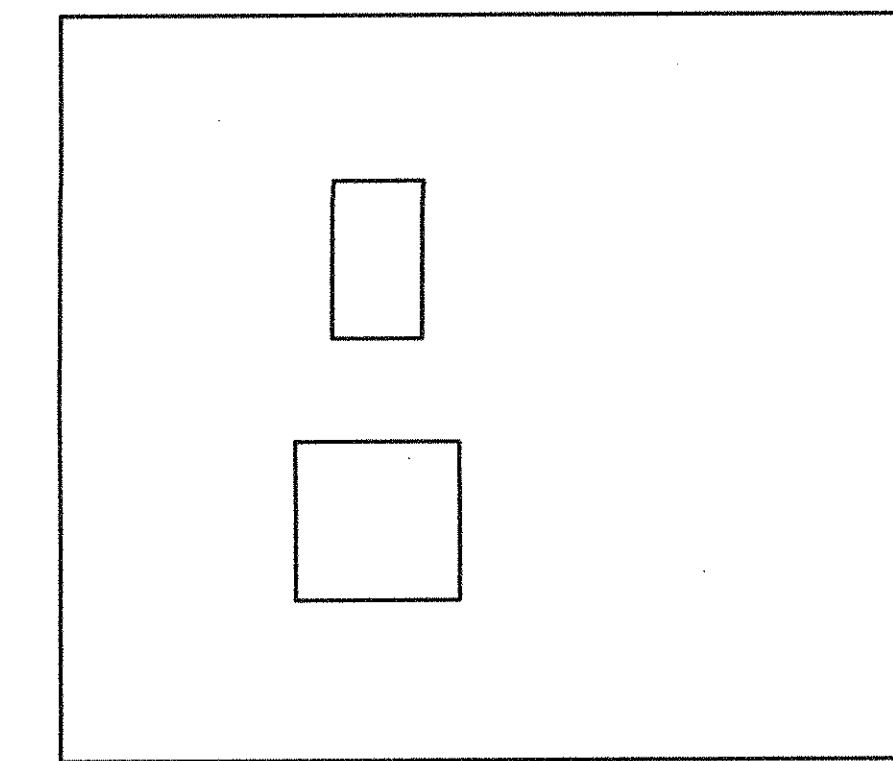
- TRENCH PER PG&E STANDARDS.
- CONDUIT SIZE AND QUANTITY PER PG&E REQUIREMENTS.

6 TYPICAL PG&E TRENCH

NOT TO SCALE

1 NOT USED

NOT TO SCALE

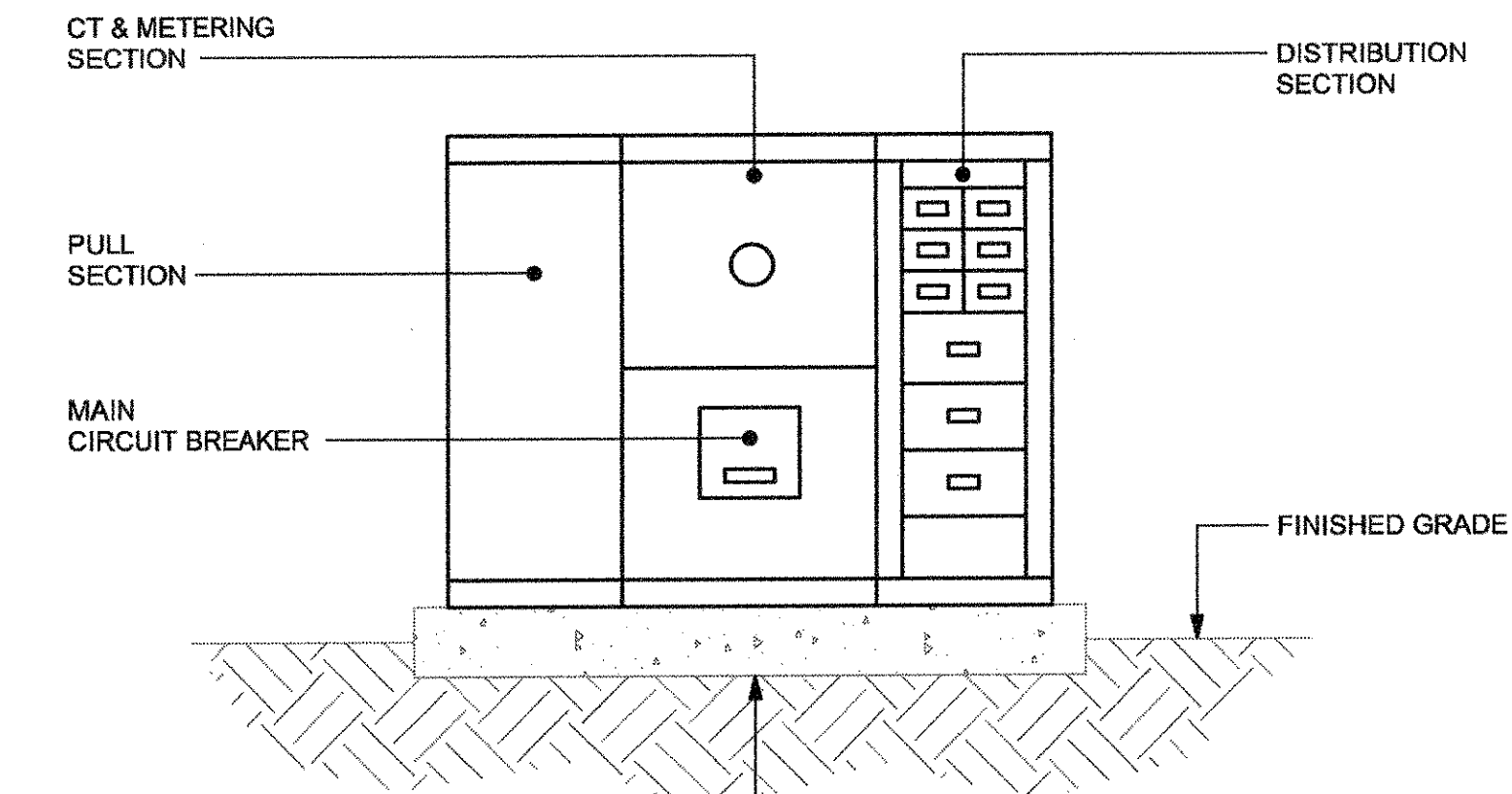


DETAIL NOTES

- PAD SHALL CONFORM TO ALL REQUIREMENTS OF PACIFIC GAS & ELECTRIC COMPANY (PG & E) REFER TO PG & E CONTRACTOR DOCUMENTS FOR FINAL REQUIREMENTS.

2 PG&E TRANSFORMER PAD

NOT TO SCALE



CONCRETE PAD 6" LARGER THAN EQUIPMENT, MINIMUM 3" ABOVE GRADE, 3 1/2" BELOW GRADE. PROVIDE STEEL WIRE MESH 4" GRID

DETAIL NOTES

- PROVIDE A LOCKABLE NEMA 3R ENCLOSURE.
- SEE SWITCHBOARD ANCHORAGE PAD DETAIL FOR SWITCHBOARD MOUNTING REQUIREMENTS.

3 EXTERIOR SWITCHBOARD ELEVATION

NOT TO SCALE

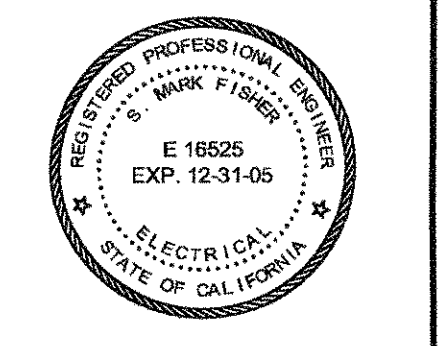
FILE LOCATION: P:\12163.002\Permit Pkg 3\CAD\Arch\Set\SKYLINE PK&G CONFORM SET\Elec\030654E71.dwg
LAST SAVED ON: 9/12/04 at 4:15pm; PLOTTED ON: 9/13/04 at 2:10pm

DSA SUBMITTAL - 02.13.04

Sugimura & Associates Architects
Architecture • Interiors
Landscape Architecture
2155 South Bascom Avenue, Suite 200
San Jose, CA 95008
408-879-0600 FX 408-377-6066
COPYRIGHT © 2001 Sugimura & Associates/Architects

IPCAI
INTEGRATED DESIGN ASSOCIATES INC
CONSULTING ELECTRICAL ENGINEERS
10000 California Street, Suite 100, Colton, CA 95926
TEL: (916) 263-1800, FAX: (916) 263-1801

STATE OF CALIFORNIA ARCHITECT
OFFICE OF REGULATION SERVICES
APP. NO. _____ DATE _____
FILE NO. _____
Division of the State Architect
1995 Clay St., Suite 2001
Oakland, CA 94612



DETAILS
SKYLINE COLLEGE SWING SPACE
PERMIT PACKAGE #3
SKYLINE COLLEGE
3300 COLLEGE DRIVE
SAN BRUNO, CA. 94066

REVISIONS

NO.	ITEM	DATE
1	CONSTRUCTION ISSUE	6/10/04

CLIENT APPROVAL:

DRAWN BY: RCS
CHECKED BY: SMF
JOB NO: 2163.002 DATE: 5 FEB. 2004

E7.1
OF 5 SHEETS