

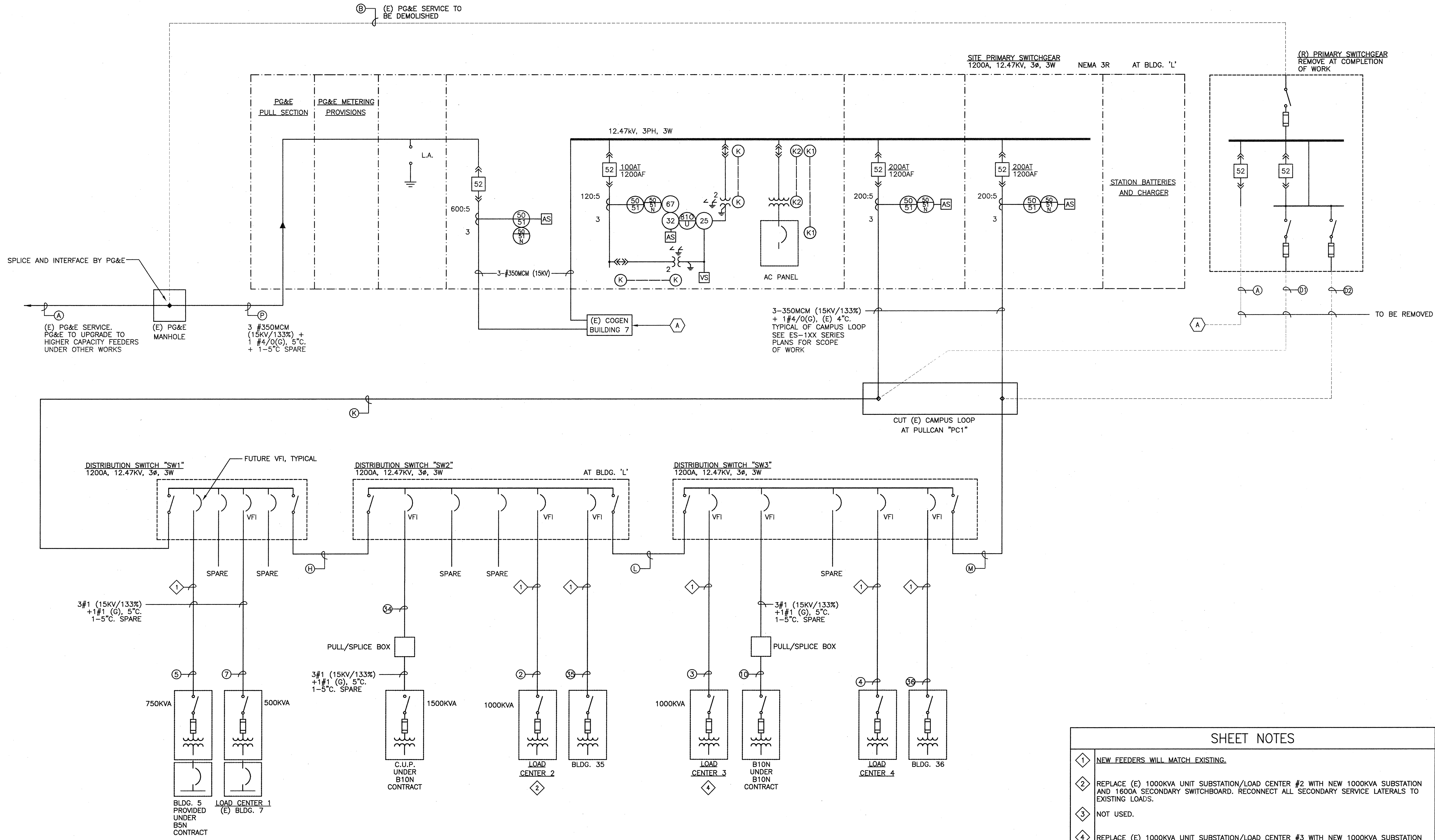


IDENTIFICATION STAMP
DIV. OF THE STATE ARCHITECT
OFFICE OF REGULATION SERVICE
APPL. # 01-110097
DATE APR 09 2008
FILE NUMBER:

The set of other project documents and all laws, regulations and design incorporated herein are deemed to constitute part of the contract documents. The contractor shall be responsible for the accuracy of the information provided herein. The contractor shall be responsible for the accuracy of the information provided herein. The contractor shall be responsible for the accuracy of the information provided herein.

Copyright 2008

College of San Mateo
Site Package
San Mateo, CA
Developed for
San Mateo County Community College District



SHEET NOTES

- 1. NEW FEEDERS WILL MATCH EXISTING.
- 2. REPLACE (E) 1000KVA UNIT SUBSTATION/LOAD CENTER #2 WITH NEW 1000KVA SUBSTATION AND 1600A SECONDARY SWITCHBOARD. RECONNECT ALL SECONDARY SERVICE LATERALS TO EXISTING LOADS.
- 3. NOT USED.
- 4. REPLACE (E) 1000KVA UNIT SUBSTATION/LOAD CENTER #3 WITH NEW 1000KVA SUBSTATION AND 1600A SECONDARY SWITCHBOARD. RECONNECT ALL SECONDARY SERVICE LATERALS TO EXISTING LOADS.

GENERAL NOTES

A. SEE ELECTRICAL SITE PLANS FOR LOCATIONS OF FEEDERS ⓐ, ⓑ, ⓓ, ETC.

Date	Revision Description
19 SEPT 2008	DSA SUBMITTAL
02 APRIL 2009	DSA FINAL

Job No.	27082.30
Date	02 APRIL 2009
Drawn by	REI CAD TEAM
Checked by	THS/RW
Scale	AS SHOWN