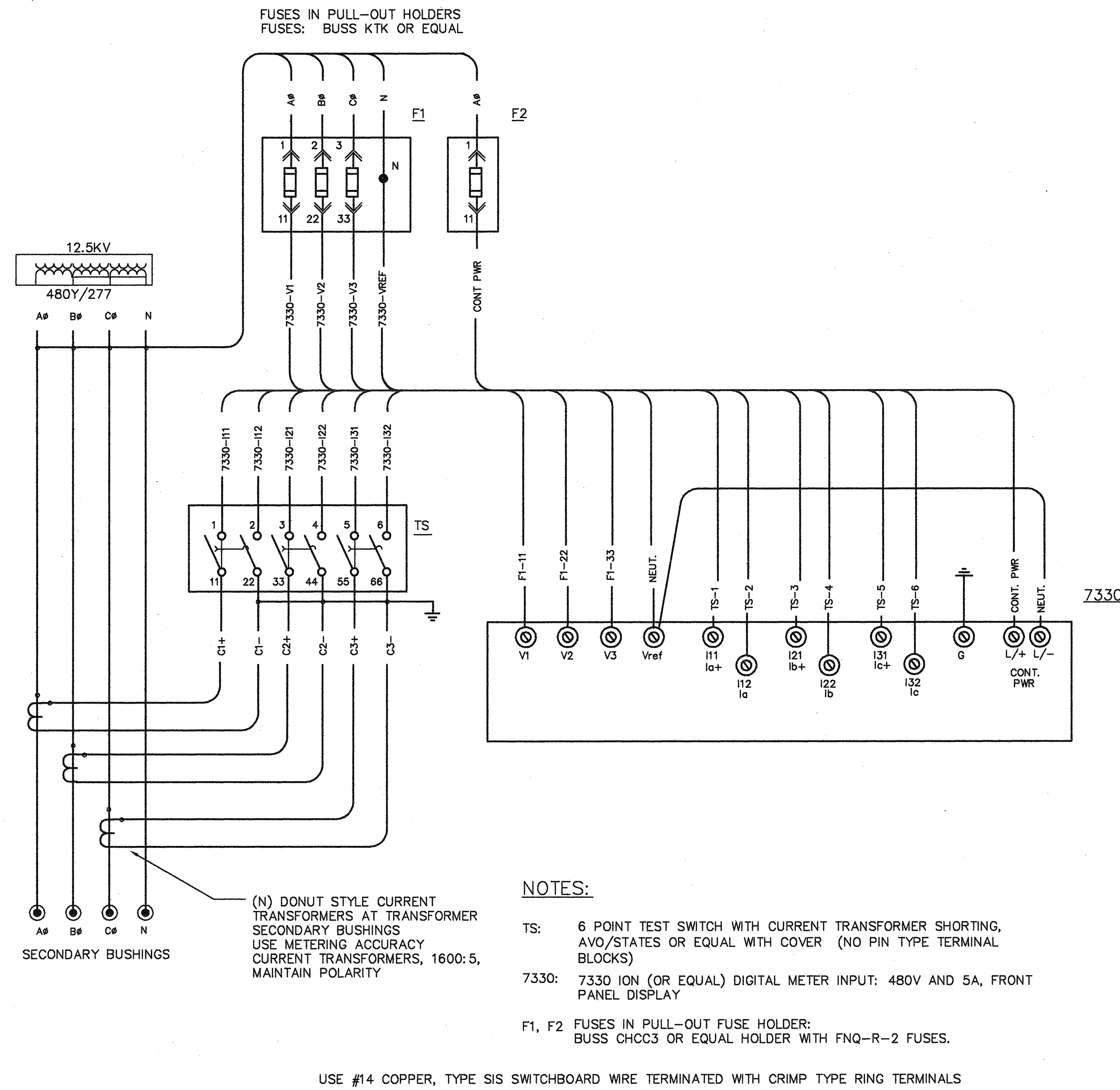
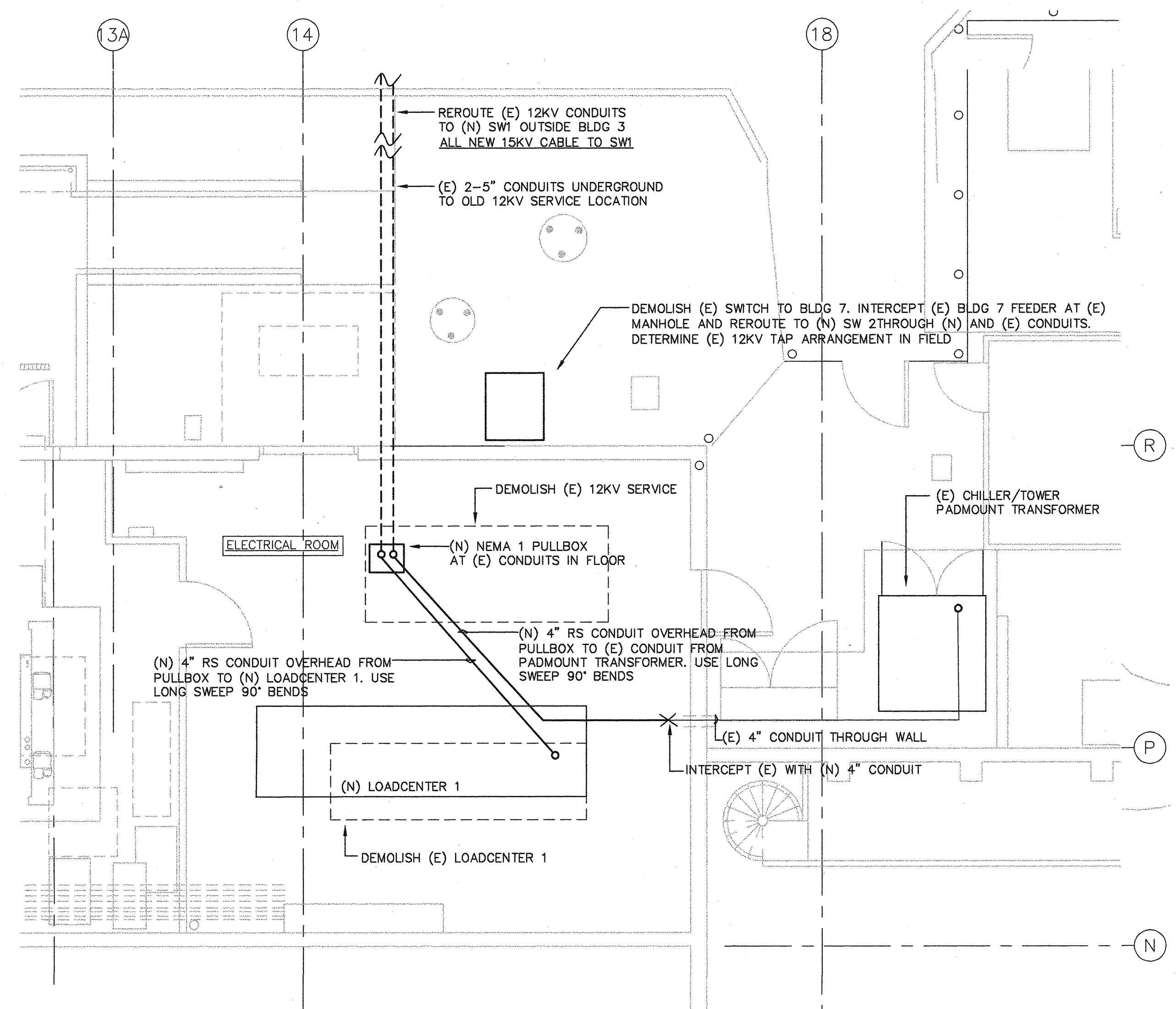


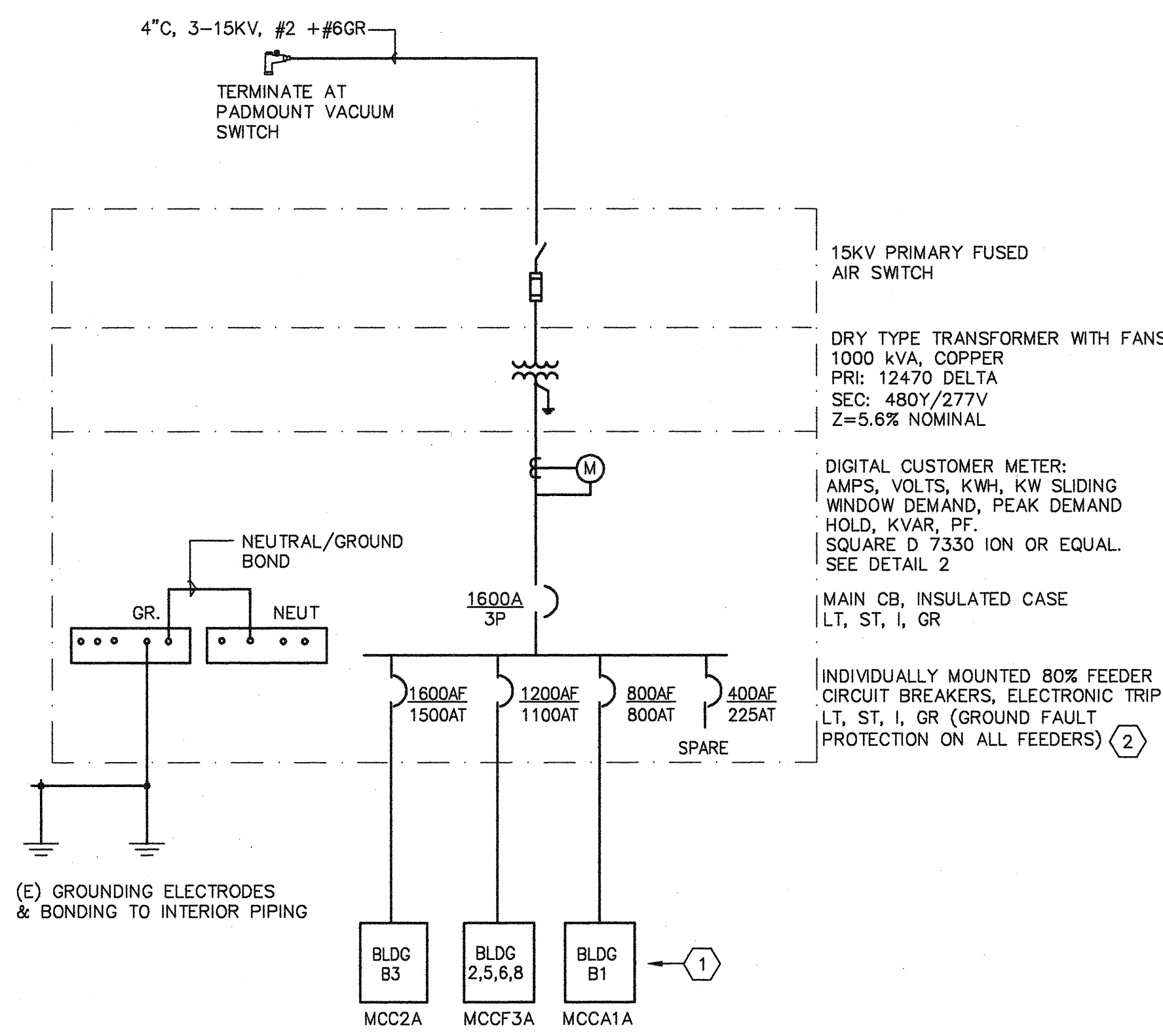
**1 LOADCENTERS 1 AND 2**  
 SCALE: 1/4"=1'-0"  
 DIMENSIONS SHOWN ARE APPROXIMATE, USE SHOP DRAWINGS FOR CONSTRUCTION



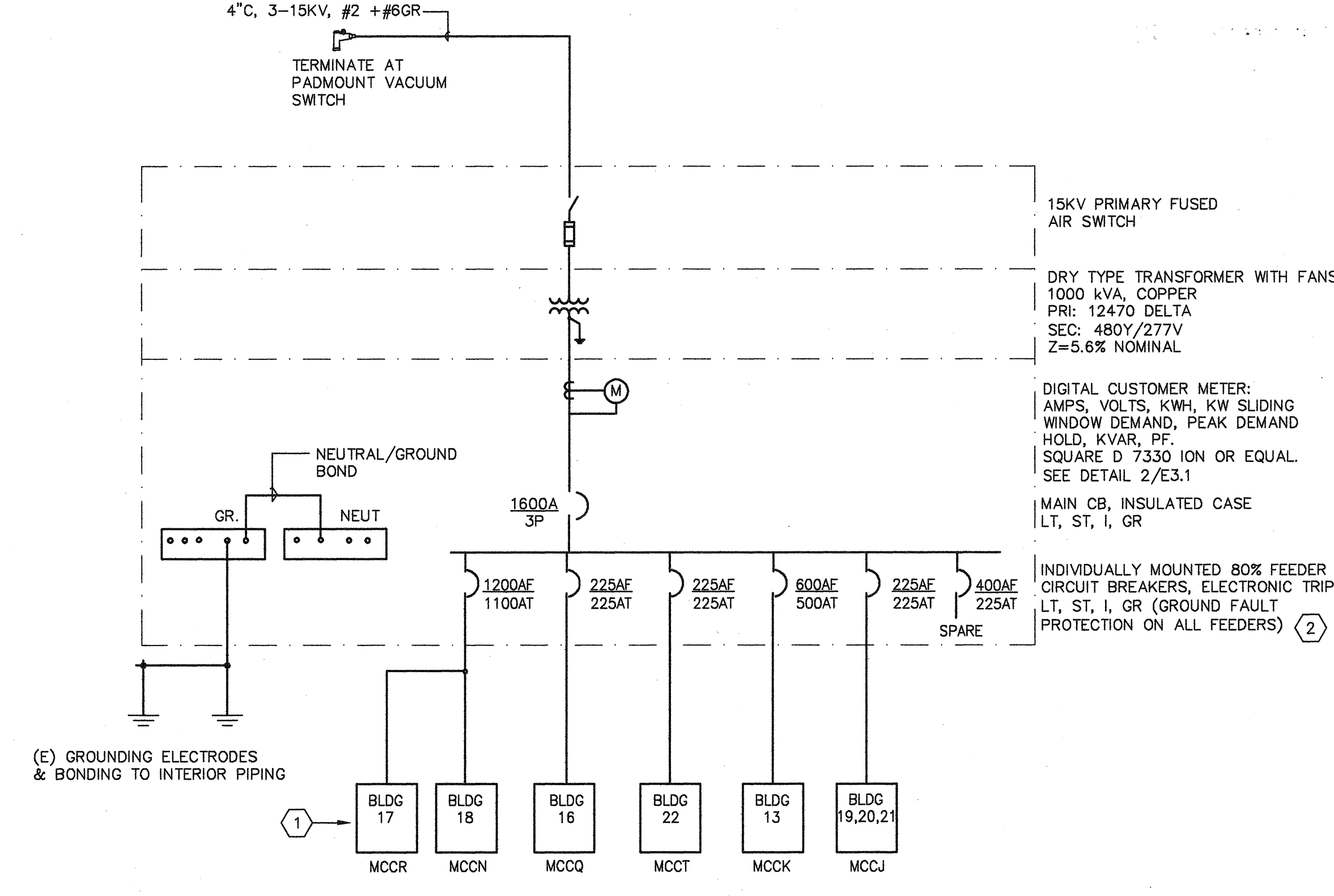
**2 METER WIRING**  
 N.T.S.



**3 BUILDING 3 ELECTRICAL PLAN**  
 SCALE: 3/16"=1'-0"



**4 LOADCENTER 1, 1-LINE DIAGRAM**  
 N.T.S.



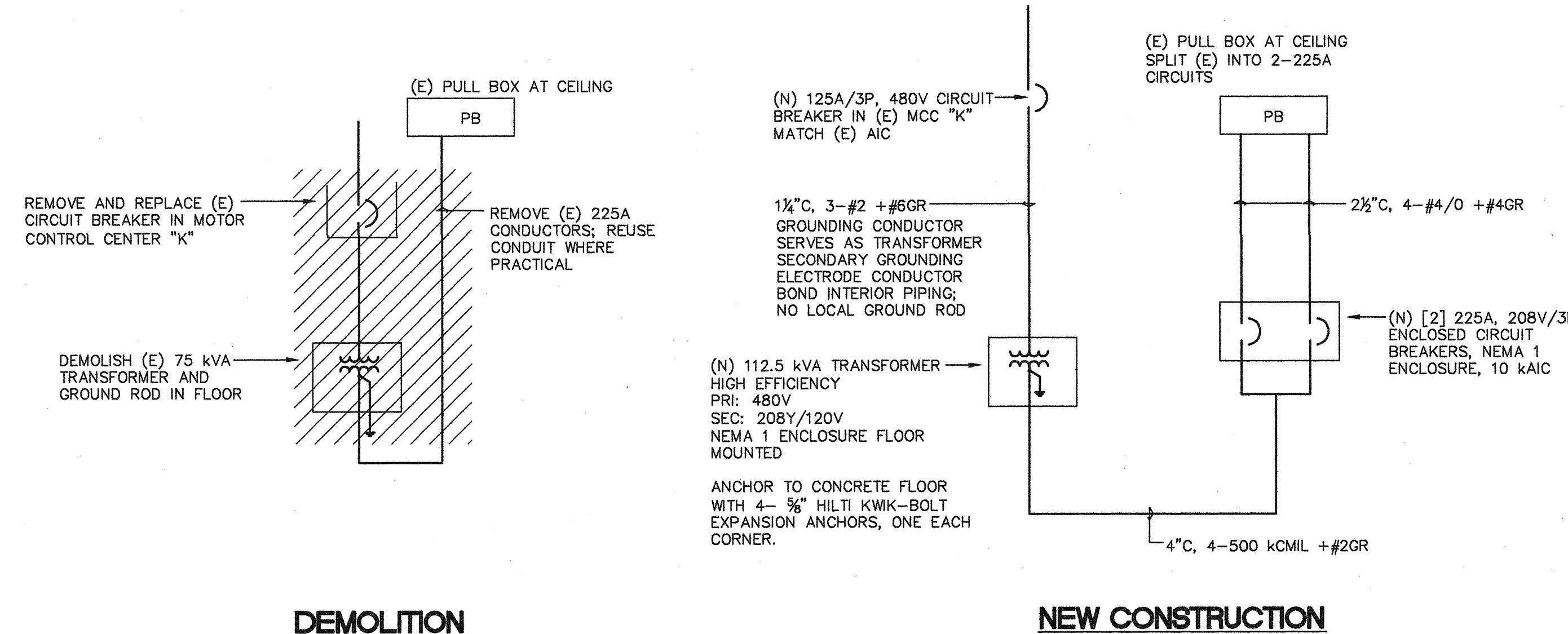
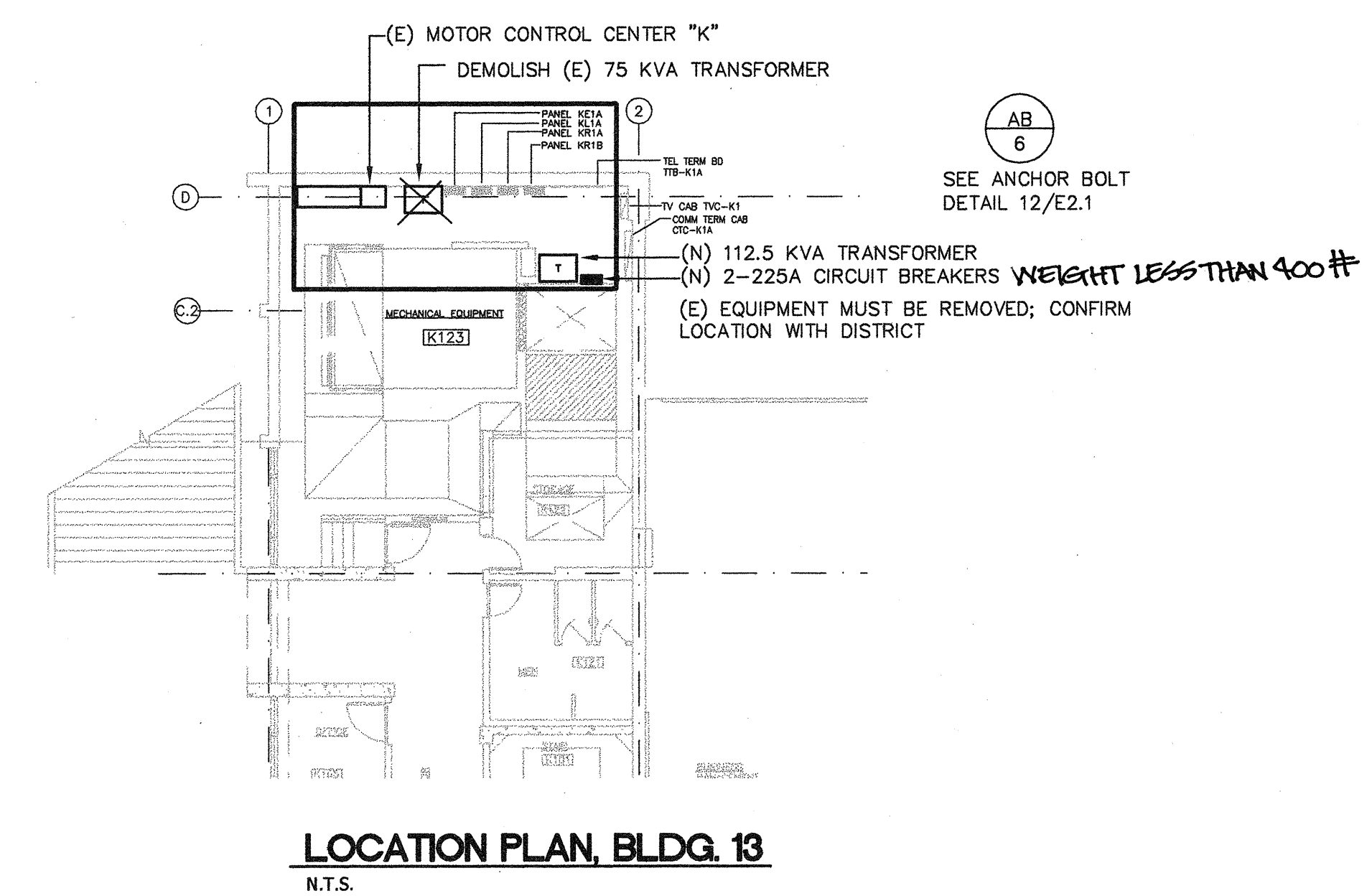
**5 LOADCENTER 2, 1-LINE DIAGRAM**  
 N.T.S.

**LOADCENTER REPLACEMENT GENERAL NOTES**

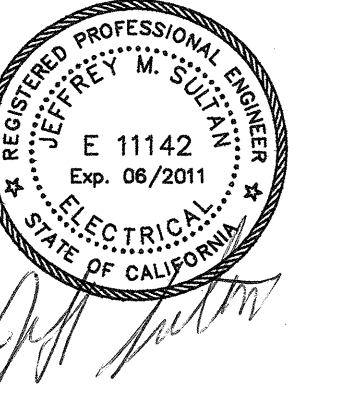
- INFORMATION SHOWN FOR (E) LOADCENTERS IS BASED ON AVAILABLE RECORDS THAT MAY NOT BE ACCURATE. VERIFY SETTINGS, RATINGS, AND CONDUCTOR SIZES IN FIELD. NOTIFY PROJECT MANAGER IF CONNECTIONS OR CIRCUITS ARE DISCOVERED THAT ARE NOT SHOWN ON THE DRAWINGS.
- EXTEND (E) CONDUCTORS TO REACH (N) FEEDER CIRCUIT BREAKERS WITH COMPRESSION SLEEVES INSULATED WITH HEATSHRINK OR COLD SHRINK TUBING. EXTEND (E) ALUMINUM CONDUCTORS WITH COPPER CONDUCTORS USING APPROVED AL/CU SLEEVES. USE ANTI-OXIDE COMPOUND ON ALUMINUM CONDUCTORS ACCORDING TO MANUFACTURER'S INSTRUCTIONS.
- TEST ALL (N) CIRCUIT BREAKERS AT THE SETTINGS PROVIDED BY THE ENGINEER. GROUND FAULT TRIP TESTING INCLUDED MAIN AND FEEDERS.

**LOADCENTER REPLACEMENT SHEET NOTES**

- (TYP FOR MOTOR CONTROL CENTERS AND PANELBOARDS FED FROM LOADCENTERS) VERIFY AT EACH FEEDER THAT THERE ARE NO NEUTRAL TO GROUND BONDING JUMPERS OR OTHER NEUTRAL TO GROUND CONNECTIONS AT THE FAR END. REMOVE ANY THAT ARE FOUND. VERIFY THAT ANY GROUNDING ELECTRODE CONDUCTORS ARE CONNECTED TO THE GROUND BUS ONLY.
- ALL FEEDERS ARE SHOWN IN RECORDS AS 480Y/277V. PROVIDE NEUTRAL CONDUCTOR CURRENT SENSOR FOR EACH FEEDER CIRCUIT BREAKER.



**6 TRANSFORMER REPLACEMENT AT BUILDING 13**  
 N.T.S.



JEFF SULTAN, P.E.  
 ELECTRICAL ENGINEER  
 2081 Camino de los Robles  
 Menlo Park, CA 94025  
 (650) 854-7585

jeff@jmspower.net

**IDENTIFICATION STAMP**

DIVISION OF THE STATE ARCHITECT

APPLICATION NUMBER: 111618

DATE: 2/9/11

CALIFORNIA STATE FIRE MARSHAL APPROVED

APPROVAL OF THIS PLAN DOES NOT AUTHORIZE OR APPROVE ANY DESIGN OR CONSTRUCTION FROM APPLICABLE REGULATIONS. FINAL APPROVAL IS SUBJECT TO FIELD INSPECTION. ONE SET OF APPROVED PLANS SHALL BE AVAILABLE ON THE PROJECT SITE AT ALL TIMES.

**CAÑADA COLLEGE**  
 Electrical Infrastructure Replacement Project

4200 Farm Hill Blvd  
 Redwood City, CA 94061

**BID SET**

**SHEET TITLE**  
**ELECTRICAL DETAILS**

**REVISIONS**

NO. DATE DESCRIPTION

DATE: January 14, 2011

DRAWN: JS

CHECKED: MM

SCALE: AS NOTED

JOB NO.: 2921.01

SHEET NUMBER

**E3.1**